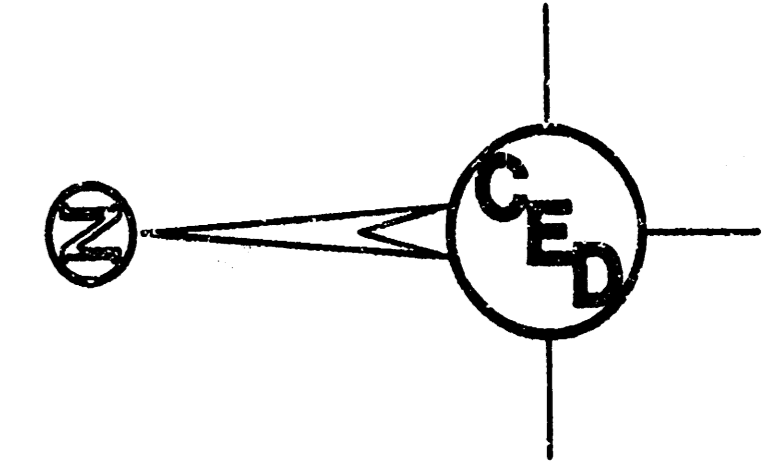


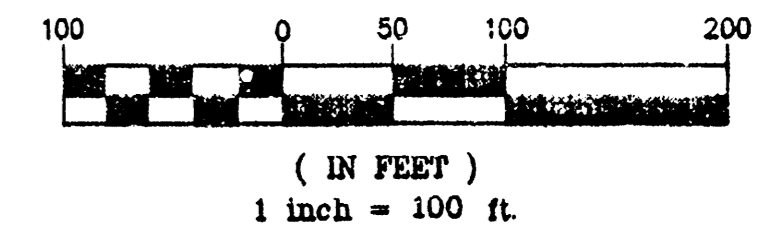
DRAINAGE PLAN FOR

HIS HELPING HANDS

AN ADDITION TO WICHITA, SEDGWICK COUNTY, KANSAS
IN THE NE 1/4 OF SECTION 33, T26S, R1E OF THE 6TH P.M.

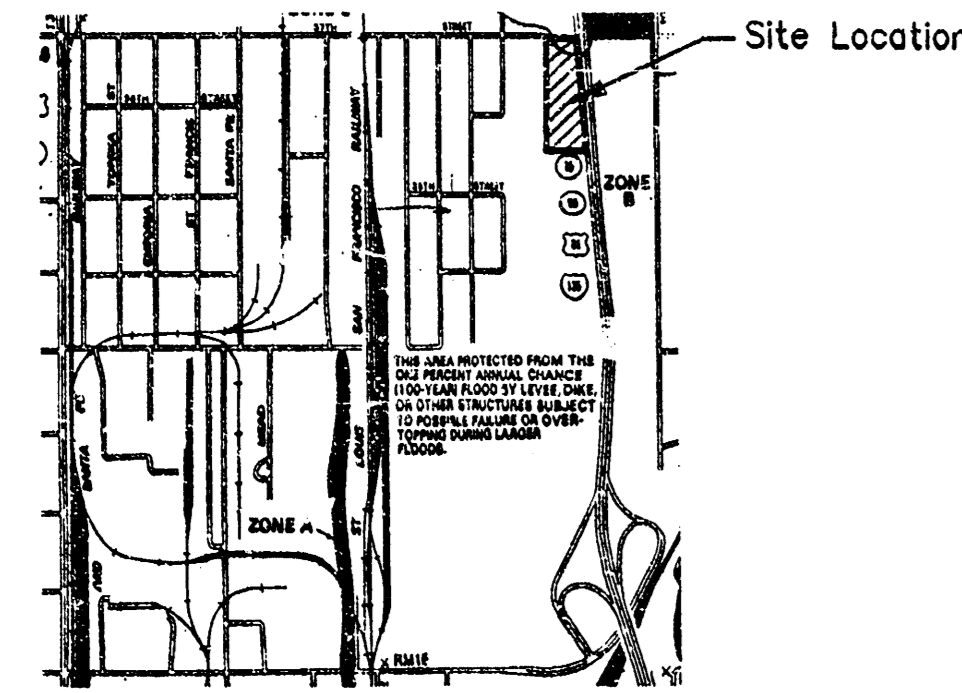


GRAPHIC SCALE



FLOOD_ZONE MAP

Sec. 33, T26S, R1E



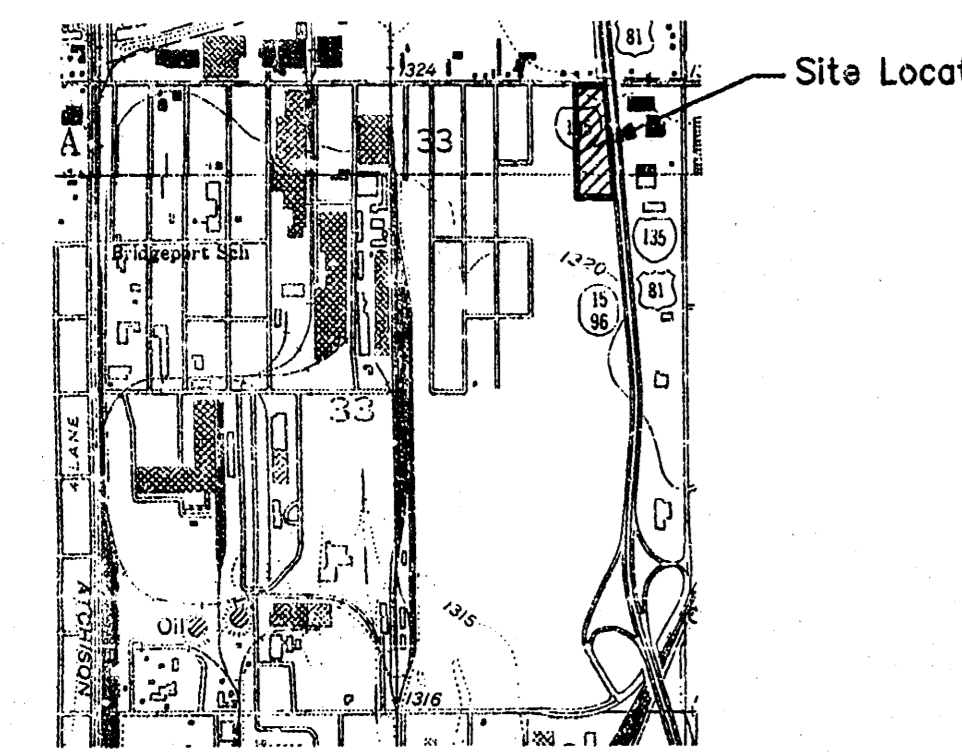
SCALE: 1" = 2,000'

FLOOD_ZONE

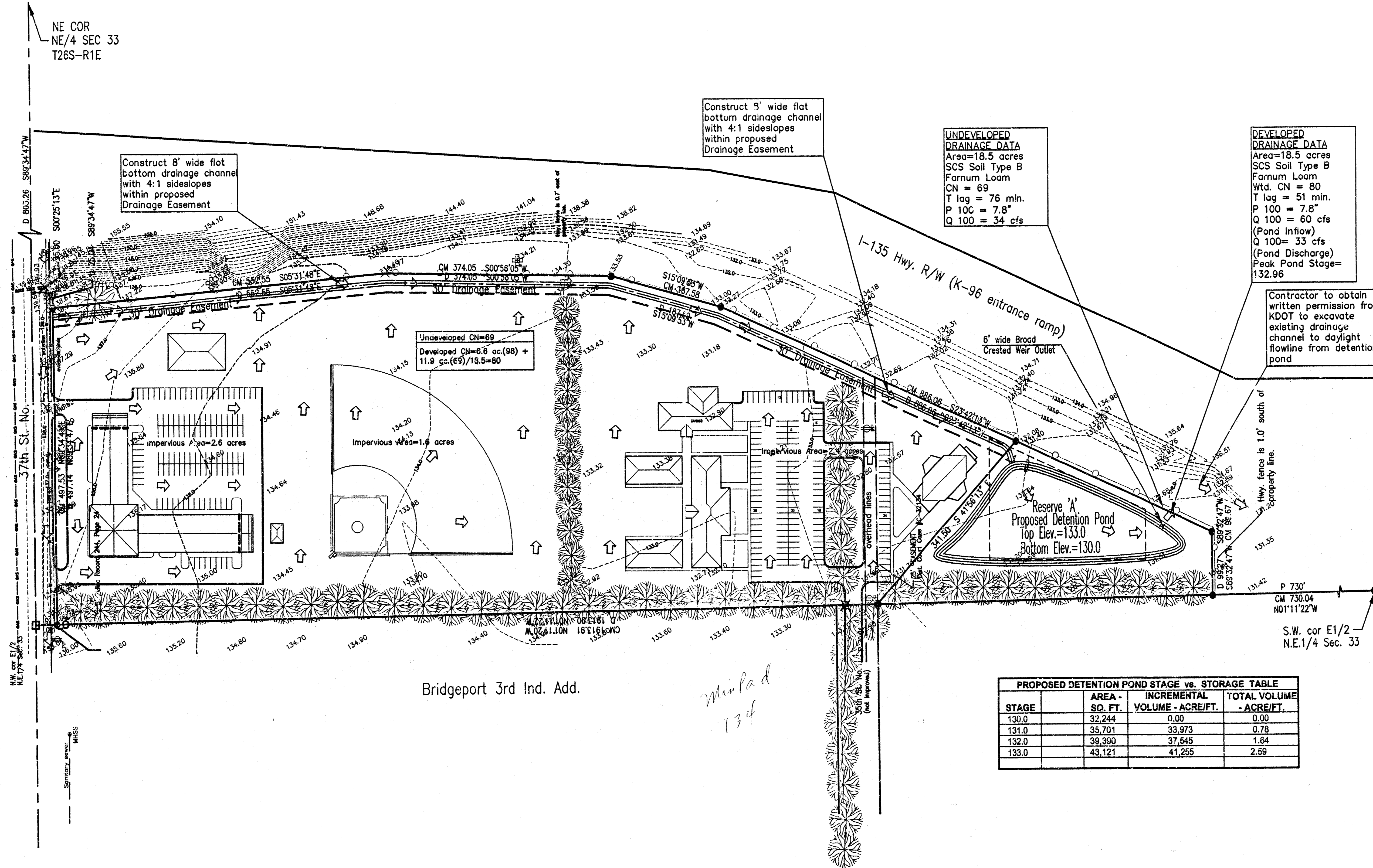
Subject property is in Zone B, as shown of Federal Emergency Management Agency (FEMA) Flood Insurance Rate Map (FIRM) for Wichita, Kansas, Community Panel Number 200328 0010 B, effective May 15, 1986.

VICINITY MAP

Sec. 33, T26S, R1E



SCALE: 1" = 2,000'



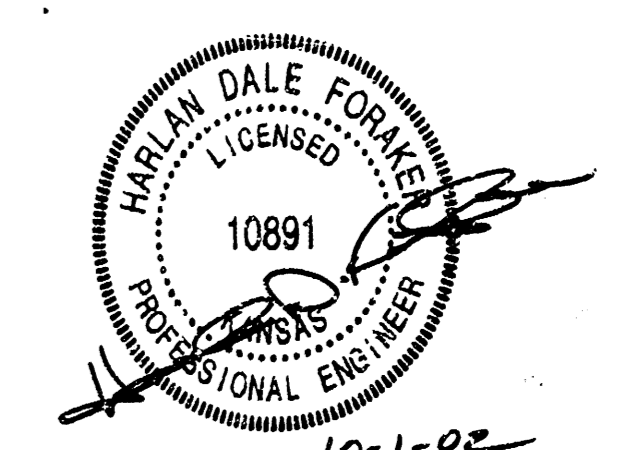
- - 5/8" Armstrong 12 7/8" capped rubber lat
 - - 3/4" iron pipe found
 - - 1/2" iron pipe found
 - ⊗ - "SRP" capped rubber found
 - CM - calculated from measurements
 - D - deep distance
 - P - pit distance
 - ⊕ - manhole "Telephone"
 - ⊖ - manhole "sanitary sewer"
 - ⊙ - power pole
 - ⊙ - fire hydrant
 - drainage direction
- ⇒ = Proposed Drainage Flow

Bridgeport 3rd Ind. Add.

Min Pad 138

PROPOSED DETENTION POND STAGE vs. STORAGE TABLE			
STAGE	AREA - SQ. FT.	INCREMENTAL VOLUME - ACRE/FT.	TOTAL VOLUME - ACRE/FT.
130.0	32,244	0.00	0.00
131.0	35,701	33,973	0.78
132.0	39,350	37,545	1.64
133.0	43,121	41,255	2.59

SURVEY DISCLAIMER:
TOPOGRAPHIC SURVEY AND CONTOUR MAP USED IN PREPARING PLANS WAS PROVIDED BY ARMSTRONG LAND SURVEY, P.A., 255 N. HATHORNA, WICHITA, KS (316)263-0082. ENGINEER DOES NOT GUARANTEE SURVEY ELEVATIONS FOR ACCURACY. CONTRACTOR SHALL VERIFY ELEVATIONS AND NOTIFY ENGINEER OF ANY DISCREPANCIES.



DRAINAGE PLAN FOR
HIS HELPING HANDS ADDITION
WICHITA, KANSAS
CED PROJ. NO.: 20020942
CERTIFIED ENGINEERING DESIGN, P.A.
810 WEST DOUGLAS, SUITE C
WICHITA, KANSAS 67203
PH.(316)262-8808 FAX.(316)262-1669

DESIGNED: HDF	SCALE: 1" = 100'	SHEET
DRAWN: HDF	DATE: 10-1-02	1
CHECKED: HDF	FILE: HHH-DP DWG	TOTAL 1