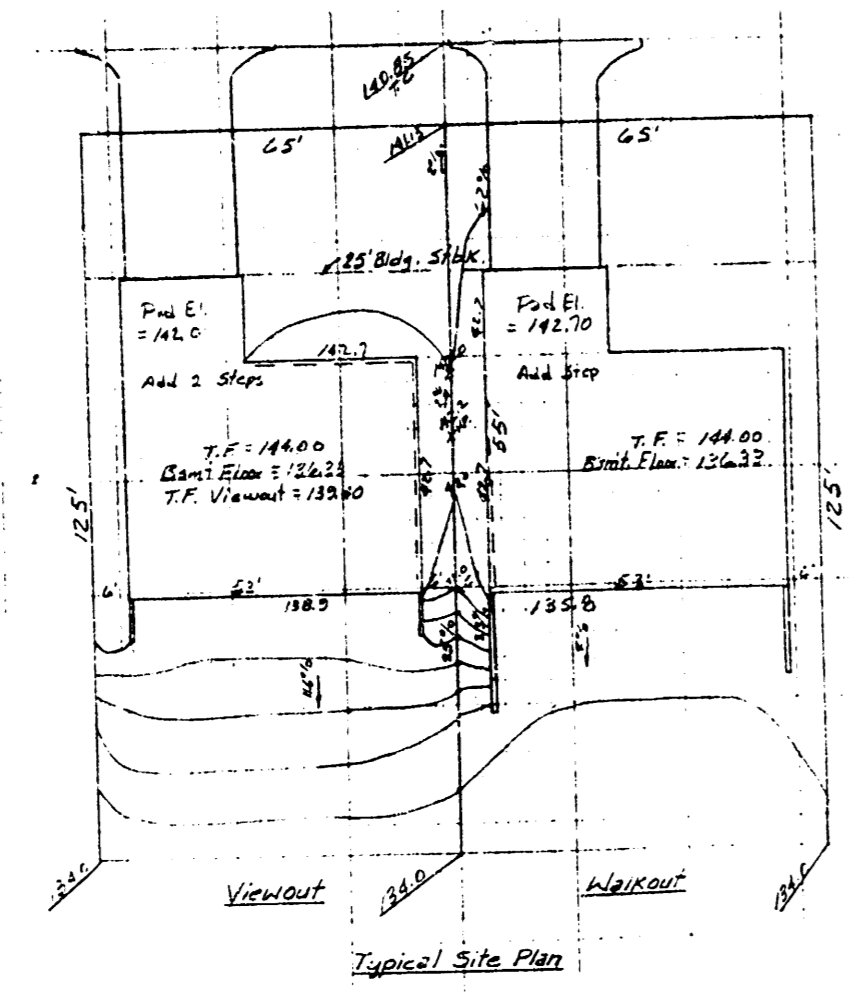
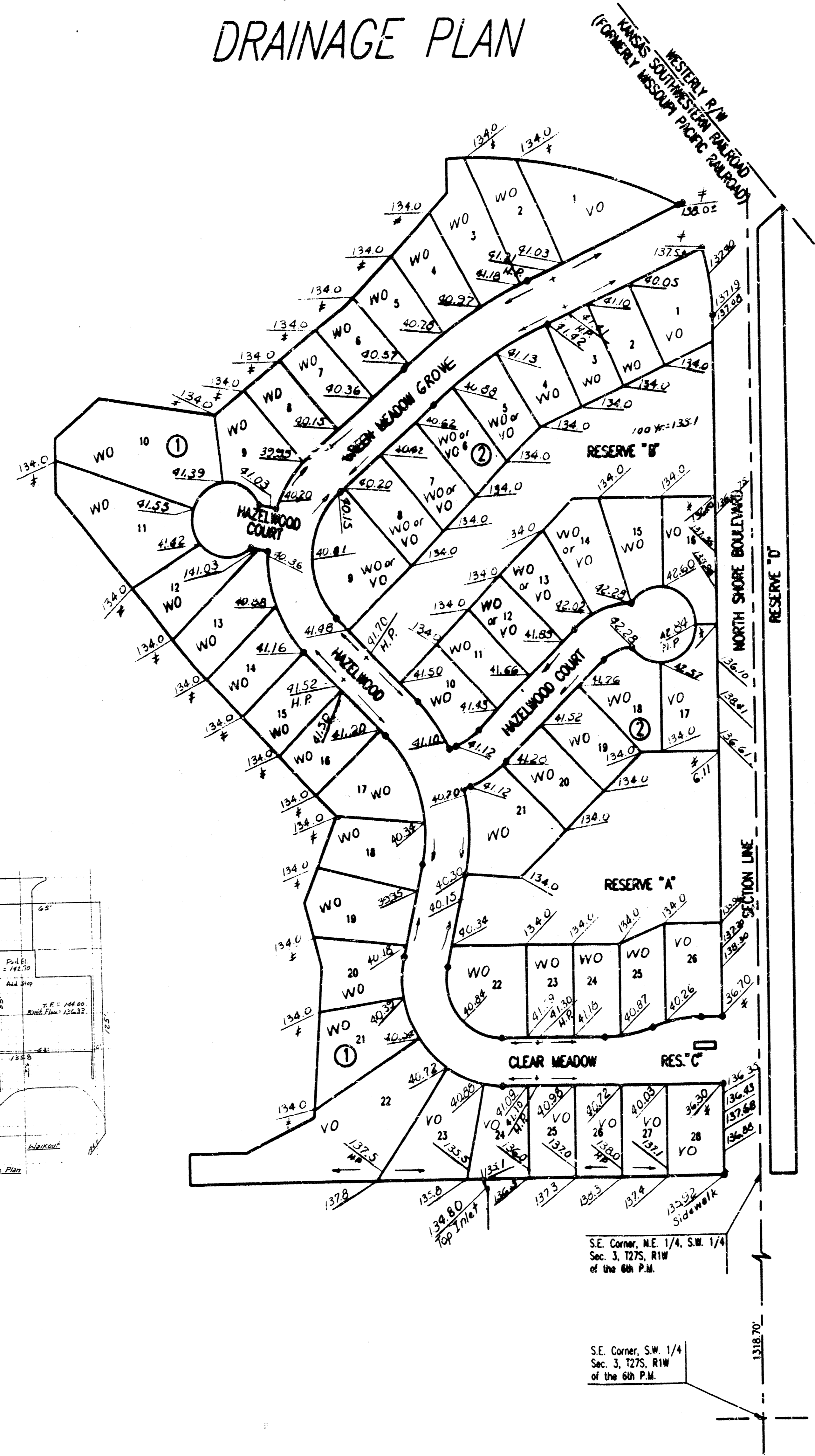


# HORSESHOE BAY ADDITION TO WICHITA, SEDGWICK COUNTY, KANSAS DRAINAGE PLAN



SCALE: 1"=100'  
● = IRON SET

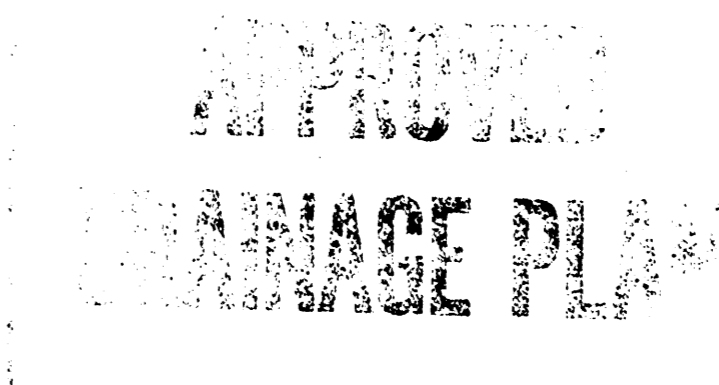
C.A.C. = COMPLETE ACCESS CONTROL  
B.S.L. = BUILDING SETBACK LINE

BENCH MARK: CITY OF WICHITA BENCH MARK DISC, 30 FEET NORTH AND 37 FEET EAST OF THE INTERSECTION OF THE CENTERLINES OF MOORE AND 21ST ST., W.  
ELEV. = 1329.991 CITY DATUM  
LLFV = 1327.17 M.S.L.

Elevations shown are walk grade.

HP - High Point  
\* - Match

NOTE: ELEVATIONS BASED ON C.O.W. DATUM  
M.S.L. DATUM = C.O.W. DATUM + 1187.18  
COMPUTATIONS BASED ON ROLLED CURB & GUTTER & MINIMUM WALK GRADE OF 0.3 FEET ABOVE TOP OF CURB



MINIMUM PAD (LOWEST OPENING) ELEVATION FOR THE FOLLOWING LOTS SHALL BE AS SHOWN BELOW:

LOTS	BLOCK	CITY DATUM	USE	M.S.L.
1 THROUGH 28	1	1329.991	1820	1327.17
1 THROUGH 28	2	1329.991	1820	1327.17

MINIMUM LOWEST FLOOR ELEVATION FOR THE FOLLOWING LOTS SHALL BE AS SHOWN BELOW:

LOTS	BLOCK	CITY DATUM	USE	M.S.L.
1 THROUGH 28	1	1329.991	1820	1327.17
1 THROUGH 28	2	1329.991	1820	1327.17

LOTS 5 THROUGH 9 & 12 THROUGH 14, BLOCK 2 CAN BE WALKOUTS IF TREES ARE NOT TO BE SAVED.

HORSESHOE  
BAY ADD'N  
REC'D  
11 JUN 1999

S.E. Corner, N.E. 1/4, S.W. 1/4  
Sec. 3, T27S, R1W  
of the 6th P.M.

S.E. Corner, S.W. 1/4  
Sec. 3, T27S, R1W  
of the 6th P.M.

Rev. 10/23/06  
DRG 71136  
256A