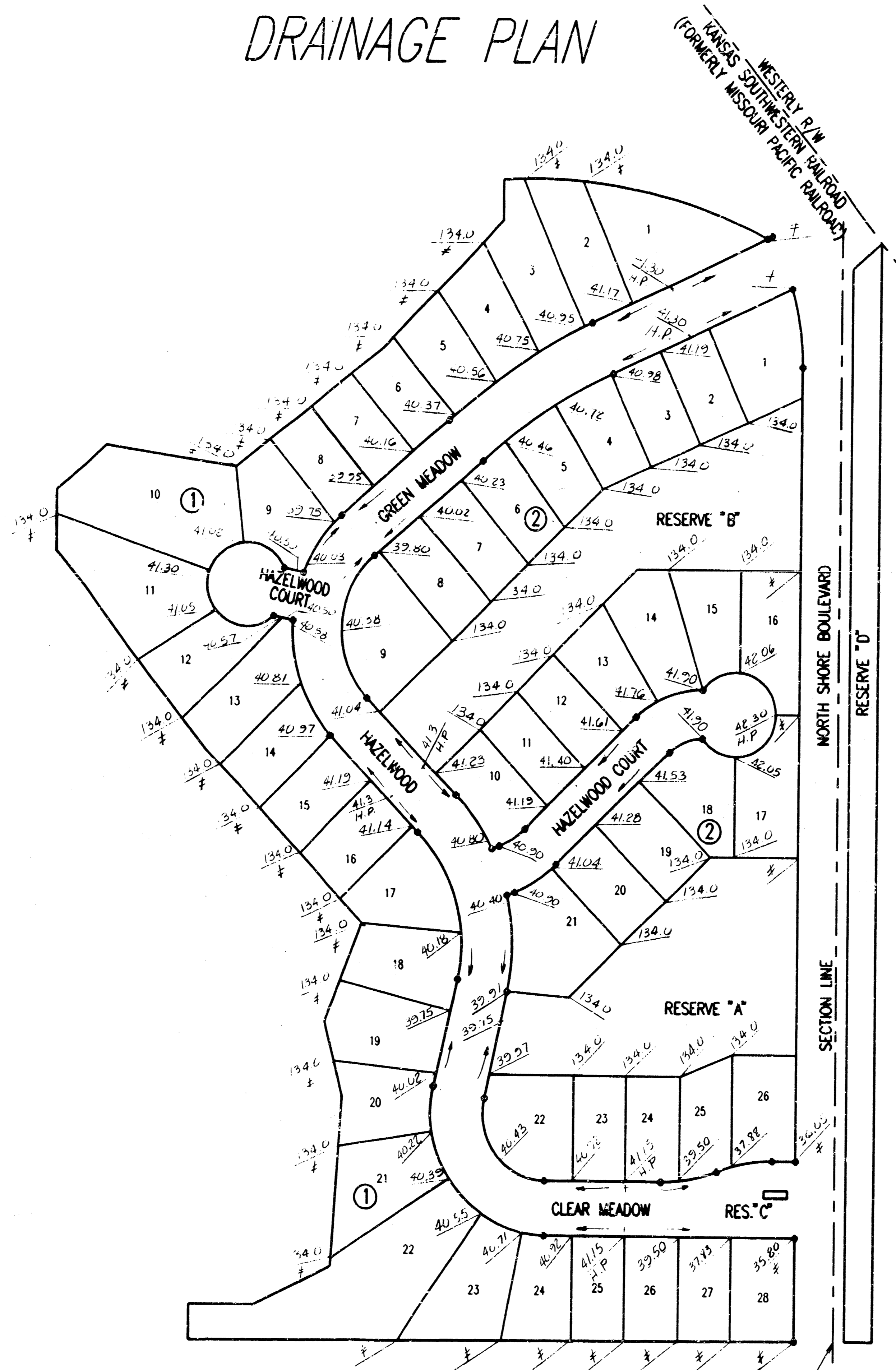


HORSESHOE BAY ADDITION TO WICHITA, SEDGWICK COUNTY, KANSAS DRAINAGE PLAN



S.E. Corner, NE 1/4, SW 1/4
Sec. 3, T27S, R1W
of the 6th P.M.

S.E. Corner, SW 1/4
Sec. 3, T27S, R1W
of the 6th P.M.

SCALE: 1"=100'

● = IRON SET

C.A.C. = COMPLETE ACCESS CONTROL
B.S.L. = BUILDING SETBACK LINE

BENCH MARK: CITY OF WICHITA BENCH MARK DISC, 30 FEET
NORTH AND 37 FEET EAST OF THE INTERSECTION OF THE
CENTERLINES OF HOOVER AND 21ST ST. N.
ELEV.=139.991 CITY DATUM
ELEV.=1327.17 M.S.L.

Elevations shown are walk grade.

HP - High Point
- Match

NOTE: ELEVATIONS BASED ON C.O.W. DATUM
M.S.L. DATUM = C.O.W. DATUM + 1187.4
COMPUTATIONS BASED ON ROLLED CURB &
GUTTER & MINIMUM WALK GRADE OF 0.3 FEET
ABOVE TOP OF CURB

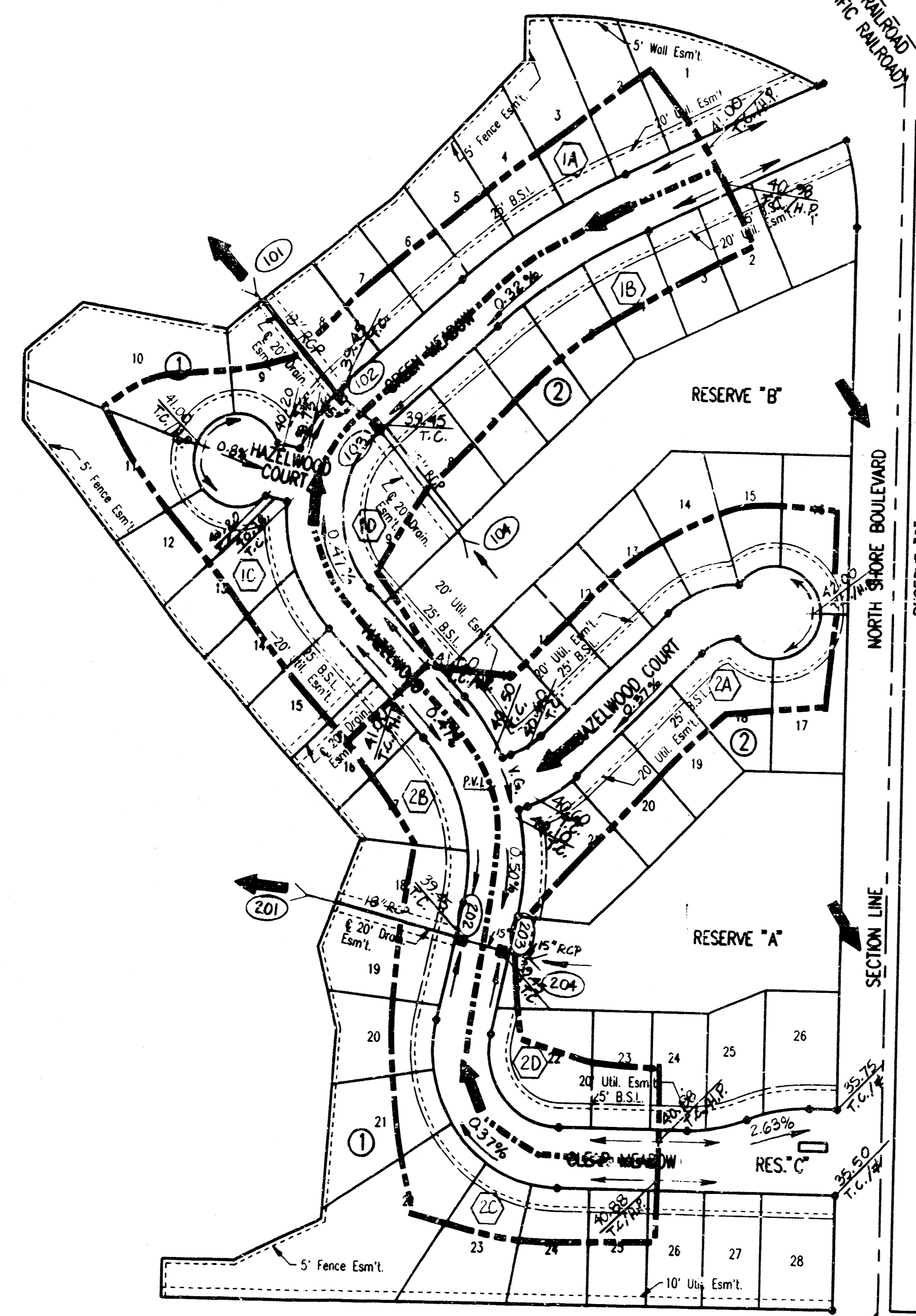
MINIMUM PAD (LOWEST OPENING) ELEVATION FOR THE FOLLOWING LOTS SHALL BE AS SHOWN BELOW.

LOTS	BLOCK	CITY DATUM	M.S.L.
1 THROUGH 28	1	137.5	1324.7
1 THROUGH 26	2	137.5	1324.7

MINIMUM LOWEST FLOOR ELEVATION FOR THE FOLLOWING LOTS SHALL BE AS SHOWN BELOW:

LOTS	BLOCK	CITY DATUM	M.S.L.
1 THROUGH 28	1	136.3	1323.5
1 THROUGH 26	2	136.3	1323.5

HORSESHOE BAY ADDITION TO WICHITA, SEDGWICK COUNTY, KANSAS DRAINAGE PLAN



SE Corner, N.E. 1/4, S.W. 1/4
Sec. 3, T27S, R1W
of the 6th P.M.

SE Corner, S.W. 1/4
Sec. 3, T27S, R1W
of the 6th P.M.



SCALE: 1"=100'
● = IRON SET

C.A.C. = COMPLETE ACCESS CONTROL
B.S.L. = BUILDING SETBACK LINE

BENCH MARK: CITY OF WICHITA BENCH MARK DISC, 30 FEET
NORTH AND 37 FEET EAST OF THE INTERSECTION OF THE
CENTERLINES OF HOOVER AND 21ST ST., N.
ELEV.=1327.991 CITY DATUM
ELEV.=1327.17 M.S.L.

LEGEND

- MAJOR BASIN BOUNDARY
- - - MINOR BASIN BOUNDARY
- MINOR STORM FLOW
- MAJOR STORM FLOW
- PROPOSED STORM SEWER & INLET
- PROPOSED STORM SEWER & MANHOLE
- ⓐ DRAINAGE BASIN IDENTIFIER
- ⓐ NODE IDENTIFIER
- T.C. TOP OF CURB ELEVATION
- H.P. HIGH POINT
- ≠ MATCH EXISTING

NOTE: ELEVATIONS BASED ON C.O.W. DATUM
M.S.L. DATUM = C.O.W. DATUM + 1187.2
COMPUTATIONS BASED ON ROLL CURB &
GUTTER, REINFORCED CONCRETE PIPE (n=0.013)
& MINIMUM WALK GRADE OF 0.3 FEET ABOVE
TOP OF CURB

MINIMUM PAD (LOWEST OPENING) ELEVATION FOR THE FOLLOWING LOTS
SHALL BE AS SHOWN BELOW:

LOTS	BLOCK	CITY DATUM	M.S.L.
1 THROUGH 28	1	137.5	1324.7
1 THROUGH 28	2	137.5	1324.7

MINIMUM LOWEST FLOOR ELEVATION FOR THE FOLLOWING LOTS SHALL BE AS
SHOWN BELOW:

LOTS	BLOCK	CITY DATUM	M.S.L.
1 THROUGH 28	1	136.3	1323.5
1 THROUGH 28	2	136.3	1323.5

