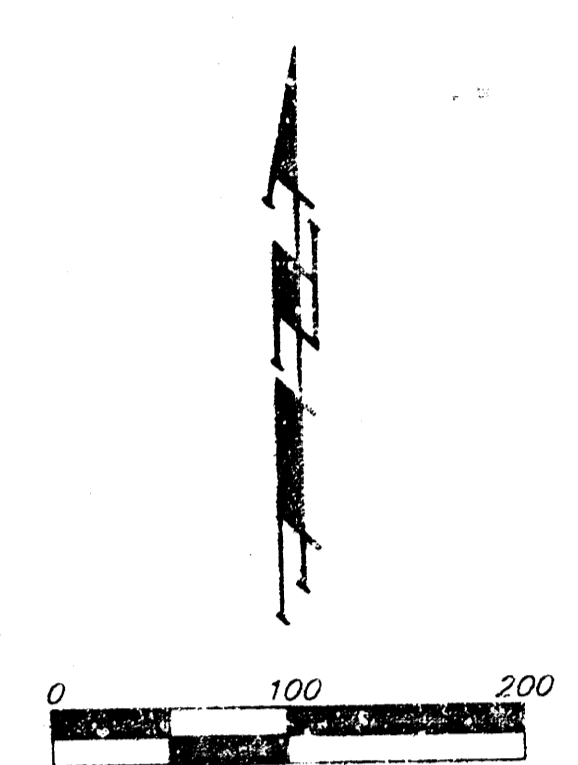
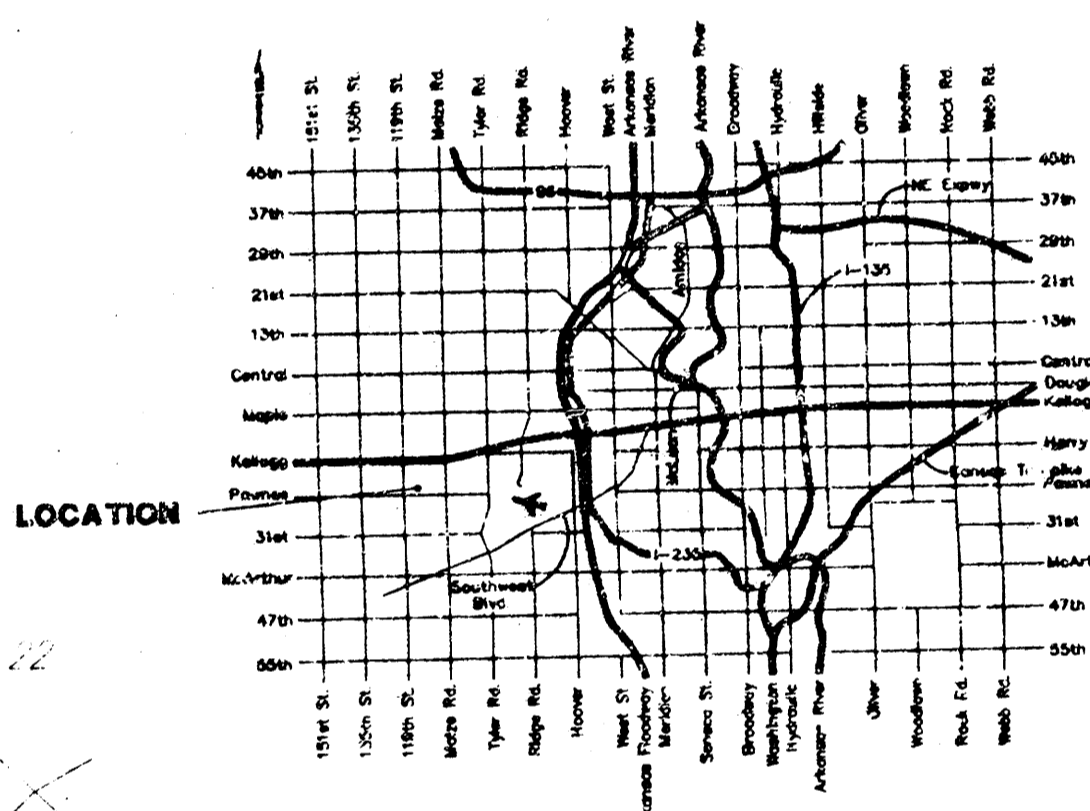
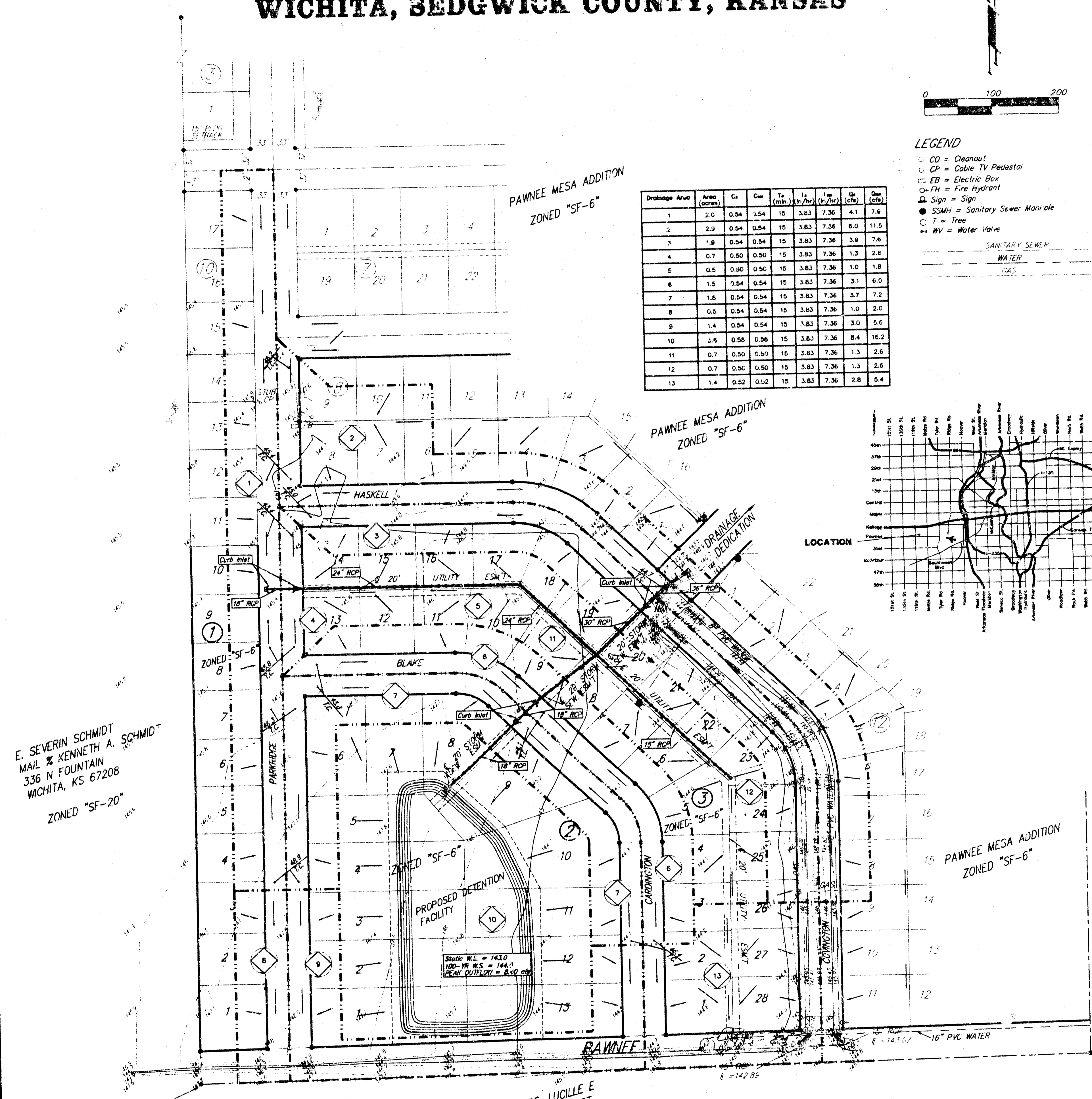


DRAINAGE PLAN HUNTERS RIDGE ADDITION WICHITA, SEDGWICK COUNTY, KANSAS



Drainage Area	Area (acres)	C _s	C _m	T _t (hr)	I _a (in/hr)	I _p (in/hr)	Q ₁ (cfs)	Q ₂ (cfs)
1	2.0	0.54	0.54	15	3.83	7.36	4.1	7.9
2	2.9	0.54	0.54	15	3.83	7.36	6.0	11.5
3	1.9	0.54	0.54	15	3.83	7.36	3.9	7.8
4	0.7	0.50	0.50	15	3.83	7.36	1.3	2.6
5	0.5	0.50	0.50	15	3.83	7.36	1.0	1.8
6	1.5	0.54	0.54	15	3.83	7.36	3.1	6.0
7	1.8	0.54	0.54	15	3.83	7.36	3.7	7.2
8	0.5	0.54	0.54	15	3.83	7.36	1.0	2.0
9	1.4	0.54	0.54	15	3.83	7.36	3.0	5.6
10	2.5	0.58	0.58	15	3.83	7.36	8.4	16.2
11	0.7	0.50	0.50	15	3.83	7.36	1.3	2.6
12	0.7	0.50	0.50	15	3.83	7.36	1.3	2.6
13	1.4	0.52	0.52	15	3.83	7.36	2.8	5.4

- LEGEND**
- CD = Cleanout
 - CP = Cable TV Pedestal
 - EB = Electric Box
 - FH = Fire Hydrant
 - △ Sign = Sign
 - SMH = Sanitary Sewer Manhole
 - T = Tree
 - WV = Water Valve
- SANITARY SEWER
--- WATER
--- GAS



E. SEVERIN SCHMIDT
MAIL # KENNETH A. SCHMIDT
336 N FOUNTAIN
WICHITA, KS 67208
ZONED "SF-20"

OWNER:
GREYSTONE CONSTRUCTION INC.
ATTN: DUSTIN MOEDER
4720 N. IRVING
WICHITA, KS 67209

JACOBS, LUCILLE E
REVOC LIV TRUST
135 N RICHMOND
WICHITA, KS 67203

NOTE: The proposed drainage plan provided herein is a generally defined plan to follow for design. It is recognized and assumed that upon the final design of street and storm sewer improvements within this plat that the designer will modify or alter the general drainage plan as necessary in order to implement the installation of the improvements to obtain the most economical design and construction possible.

BENCHMARK:
CON BENCH MARK DISC 1 1/2 MILE EAST OF 119TH ST
SOUTH SIDE OF PAWNEE, 34' SOUTH OF CTR LINE
PAWNEE AND 6' WEST OF HEDGE ROW SOUTH.
ELEV: 145.50

LEGAL:
A PLAT OF LOTS 1 THROUGH 28, BLOCK 9, AND LOTS 1 THROUGH 10, BLOCK 10, AND LOTS 1 THROUGH 25, BLOCK 11, TOGETHER WITH THAT PART OF PARKRIDGE LYN. EAST OF AND ADJACENT TO LOTS 1 THROUGH 10 IN SAID BLOCK 10, AND THAT PART OF BLAKE AND CARDINGTON LYING BETWEEN SAID BLOCKS 9 AND 11, AND ALL OF BLAKE CE LYING IN SAID BLOCK 11, ALL AS PLATTED IN PAWNEE MESA ADDITION, AN ADDITION TO SEDGWICK COUNTY, KANSAS.

January 07, 1999

BAUGHMAN COMPANY P. A.
ENGINEERING, SURVEYING, & PLANNING
310-262-2274 • 310-262-2274 • WICHITA, KANSAS 67211