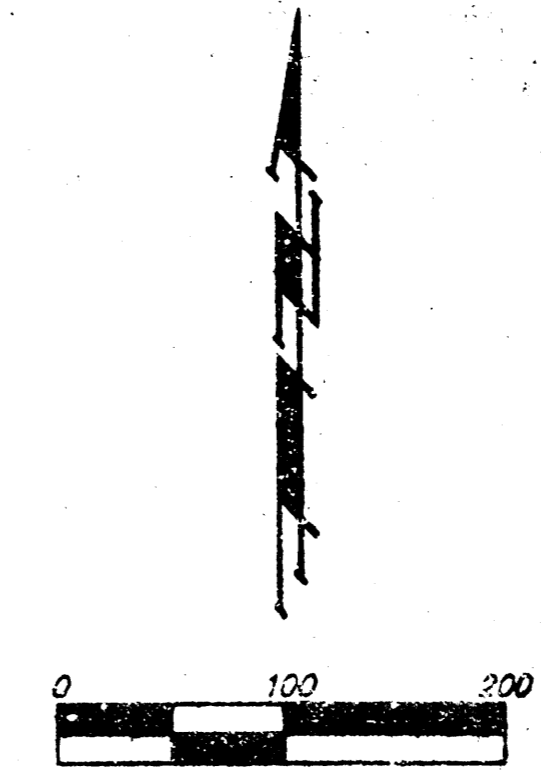
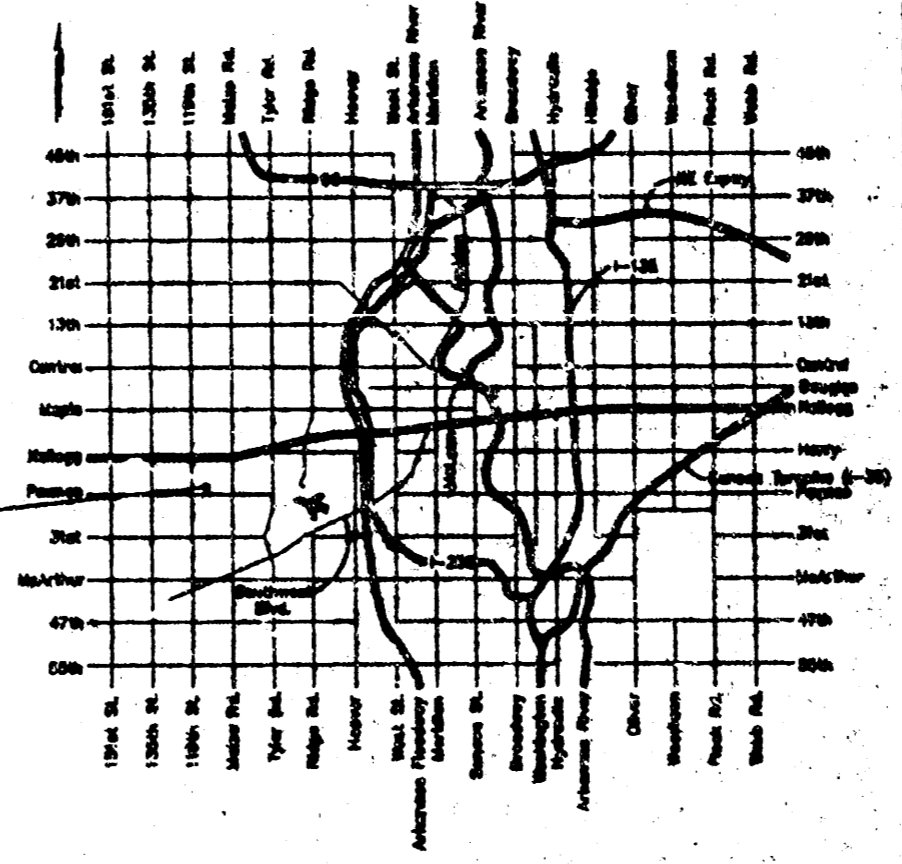
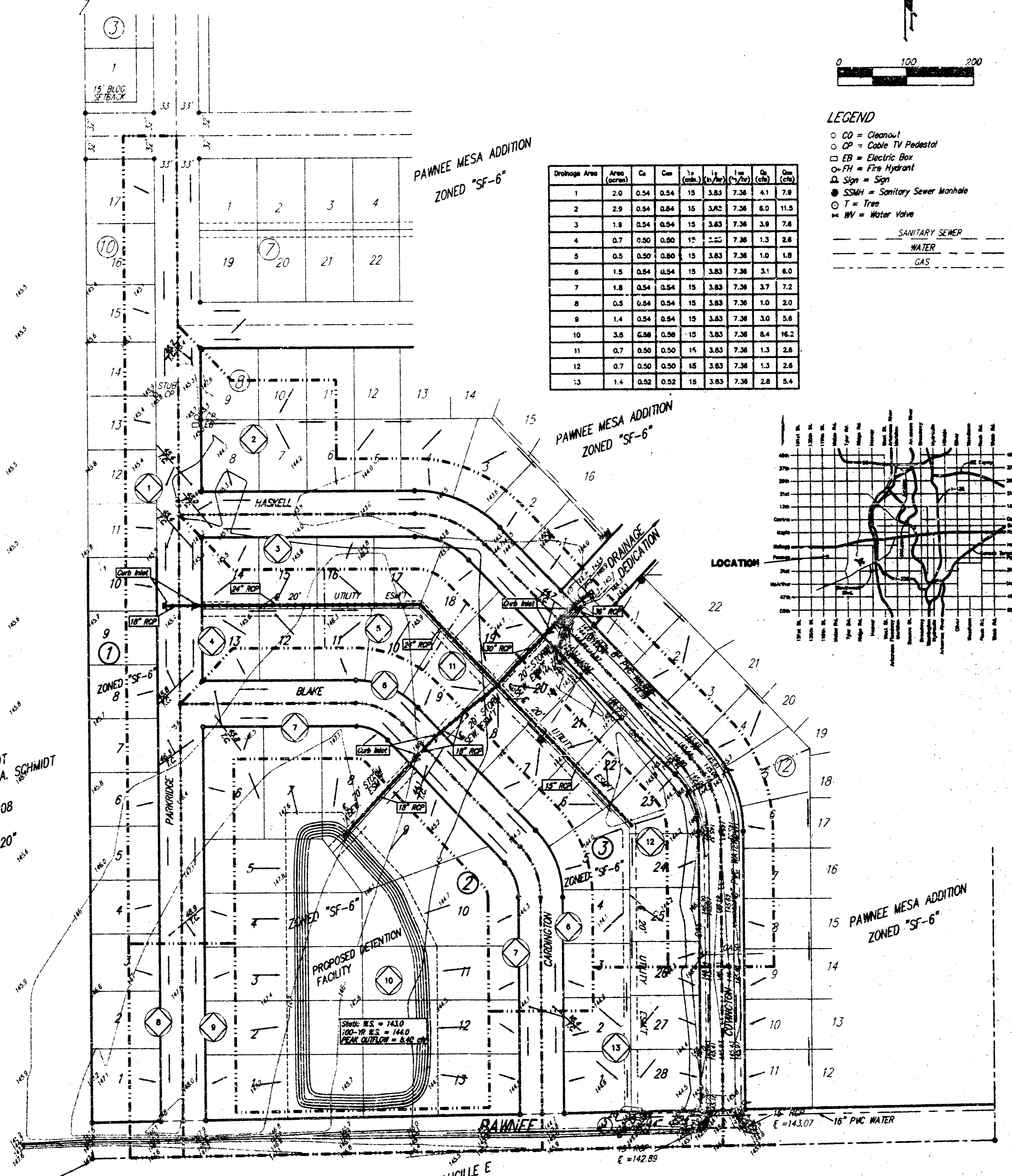


DRAINAGE PLAN HUNTERS RIDGE ADDITION WICHITA, SEDGWICK COUNTY, KANSAS



- LEGEND**
- CO = Cleanout
 - CP = Cable TV Pedestal
 - CB = Electric Box
 - FH = Fire Hydrant
 - △ Sign = Sign
 - SSMH = Sanitary Sewer Manhole
 - T = Tree
 - W = Water Valve
- SAWITARY SCHEP
 WATER
 GAS

Drainage Area	Inch (sqm)	Cs	Co	1/2" (sqm)	1/4" (sqm)	1/8" (sqm)	1/4" (sqm)	1/8" (sqm)
1	2.0	0.54	0.54	15	3.83	7.38	4.1	7.9
2	2.9	0.54	0.54	15	3.83	7.38	6.0	11.5
3	1.8	0.54	0.54	15	3.83	7.38	3.8	7.6
4	0.7	0.50	0.50	15	3.83	7.38	1.3	2.6
5	0.5	0.50	0.50	15	3.83	7.38	1.0	1.8
6	1.5	0.54	0.54	15	3.83	7.38	3.1	6.0
7	1.8	0.54	0.54	15	3.83	7.38	3.7	7.2
8	0.5	0.54	0.54	15	3.83	7.38	1.0	2.0
9	1.4	0.54	0.54	15	3.83	7.38	3.0	5.6
10	3.8	0.58	0.58	15	3.83	7.38	8.4	16.2
11	0.7	0.50	0.50	15	3.83	7.38	1.3	2.6
12	0.7	0.50	0.50	15	3.83	7.38	1.3	2.6
13	1.4	0.52	0.52	15	3.83	7.38	2.8	5.4



E. SEVERIN SCHMIDT
 MAIL # KENNETH A. SCHMIDT
 336 N FOUNTAIN
 WICHITA, KS 67208
 ZONED "SF-20"

JACOBS, LUCILLE E
 REVOC LIV TRUST
 135 N RICHMOND
 WICHITA, KS 67203

OWNER:
 CRYSTAL CONSTRUCTION INC.
 ATTN: QUETH MOEDER
 4700 N. IRVING
 WICHITA, KS 67209

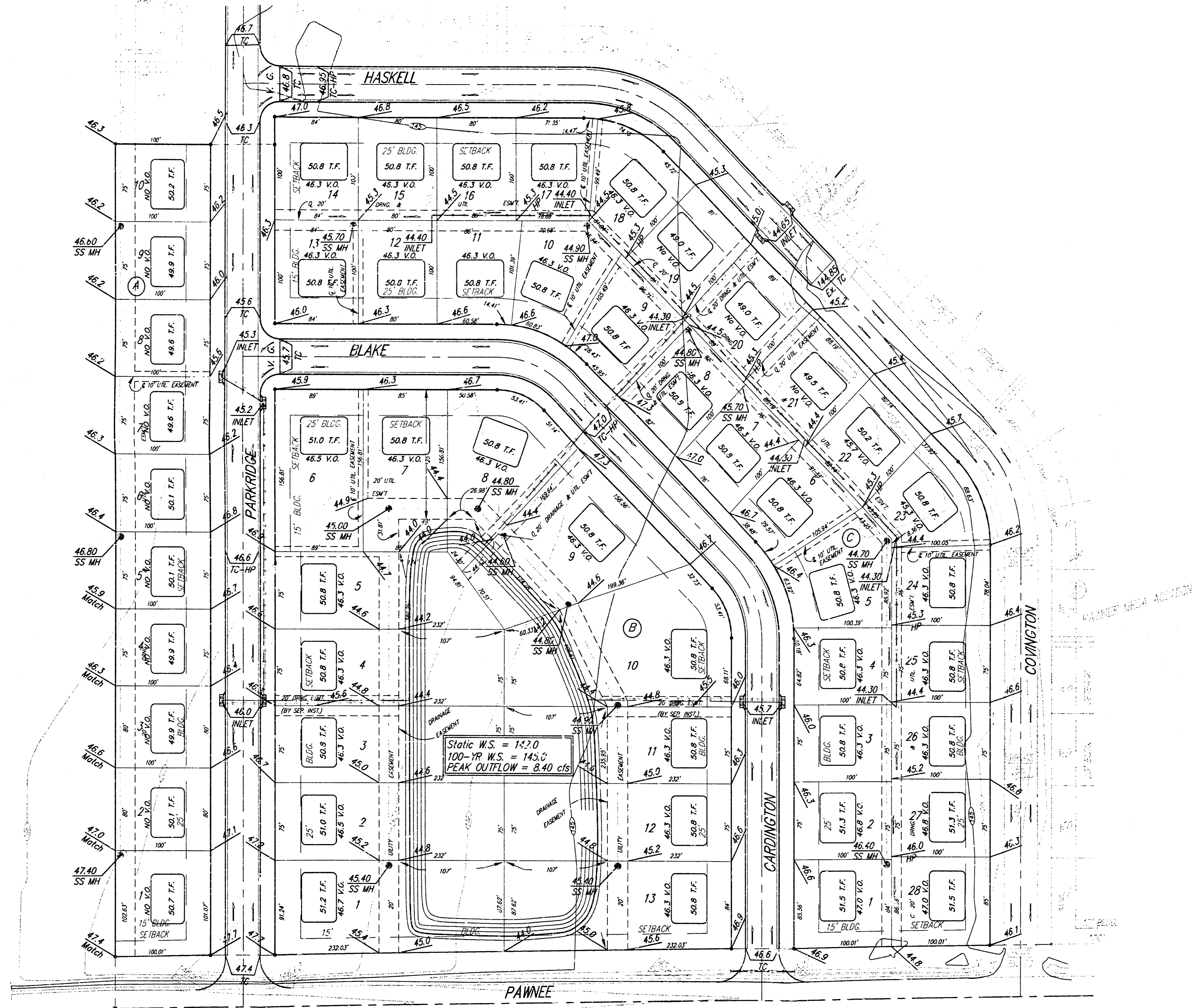
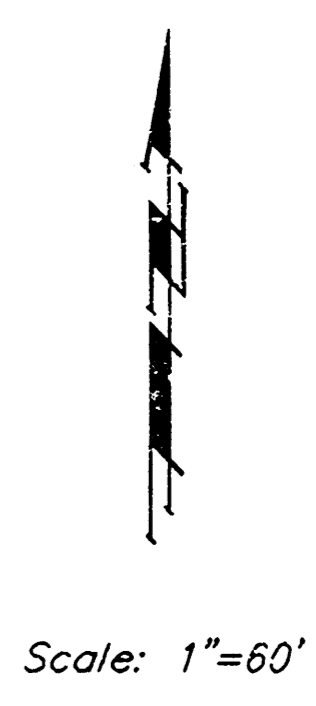
BENCHMARK:
 COW BENCH MARK DISC 1/2 MILE EAST OF 119TH ST.
 SOUTH SIDE OF PAWNEE, 3/4" SOUTH OF CURB LINE
 PAWNEE AND 6" WEST OF HEDGE ROW SOUTH.
 ELEV. 143.50

NOTE: The proposed drainage plan provided herein is a generally defined plan to follow for design. It is recognized and assumed that upon the final design of street and storm sewer improvements within this plot that the designer will modify or alter the general drainage plan as necessary in order to implement the final design of the improvements to obtain the most economical design and construction possible.

LEGAL: A PLAT OF LOTS 1 THROUGH 28, BLOCK 9, AND LOTS 1 THROUGH 10, BLOCK 10, AND LOTS 1 THROUGH 25, BLOCK 11, TOGETHER WITH THAT PART OF PARKRIDGE LYING EAST OF AND ADJACENT TO LOTS 1 THROUGH 10 IN SAID BLOCK 10, AND THAT PART OF BLAKE AND CARLINGTON LYING BETWEEN SAID BLOCKS 9 AND 11, AND ALL OF BLAKE CT. LYING IN SAID BLOCK 11, ALL AS PLATTED IN PAWNEE MESA ADDITION, AN ADDITION TO SEDGWICK COUNTY, KANSAS.

January 07, 1999
BAUGHMAN COMPANY P. A.
 ENGINEERING, SURVEYING & PLANNING
 310 - 208 - 7411 • 310 - 208 - 7412 • WICHITA, KANSAS 67211

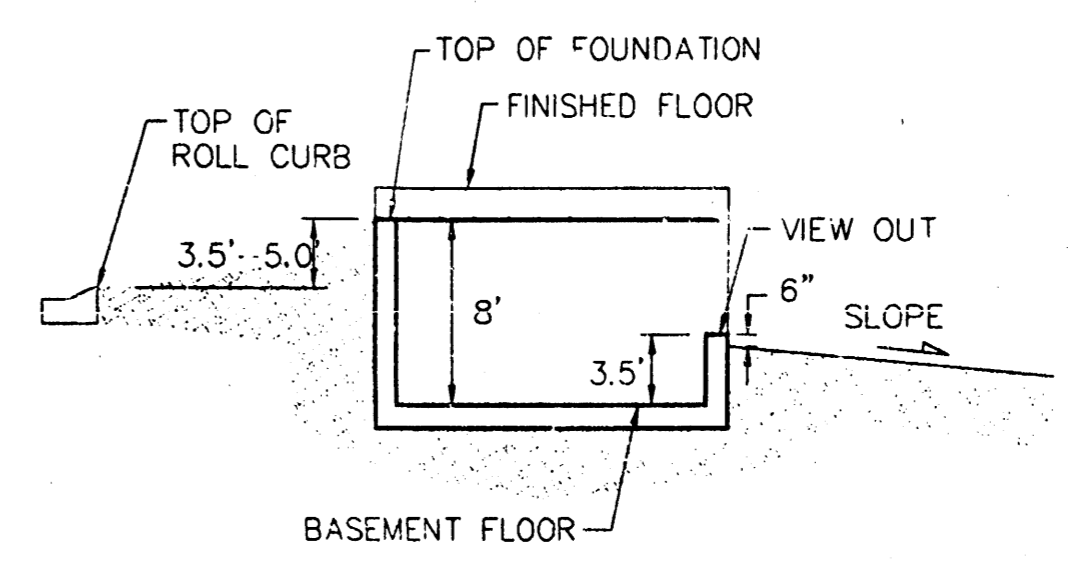
BENCHMARK:
C.O.W. Benchmark disc 1/2 mi.
east and 34' south of C of
Pawnee and 119th St. W.
(6' West of hedge row)
Elev. = 145.50 (City Datum)



NOTE:
Proposed top of foundation
are shown on plans.
Contractor to set finish floor elevation.

All street elevations shown on plans
are for top of curb (full height).

View-out elevations are denoted as
XXX V.O.



TYPICAL VIEW OUT
NO SCALE

HUNTER'S RIDGE ADDITION
GRADING PLAN
WICHITA, KANSAS

BAUGHMAN COMPANY P.A.
ENGINEERING, SURVEYING, & PLANNING
316-262-7271 • 315 ELLIS • WICHITA, KANSAS 67211

DESIGN	DRAWN	APPROVED	DATE	SCALE	SHEET
NBW	TMC		5-99	NOTED	1

HUNTER'S RIDGE 99-02-E282