

BENCHMARKS:

BM #1 C.O.W. Benchmark disc 1/2 mi. east and 34' south of C of Pawnee and 119th St. W. (6' West of hedge row)
Elev. = 145.50 (City Datum)

BM #2 "□" Cut on top of curb at the northwest corner of Pawnee & Covington on the north return.
Elev. = 145.70 (City Datum)

BM #3 "□" Cut on top of curb at the southeast corner of Lotus & Parkridge on the east return.
Elev. = 145.99 (City Datum)

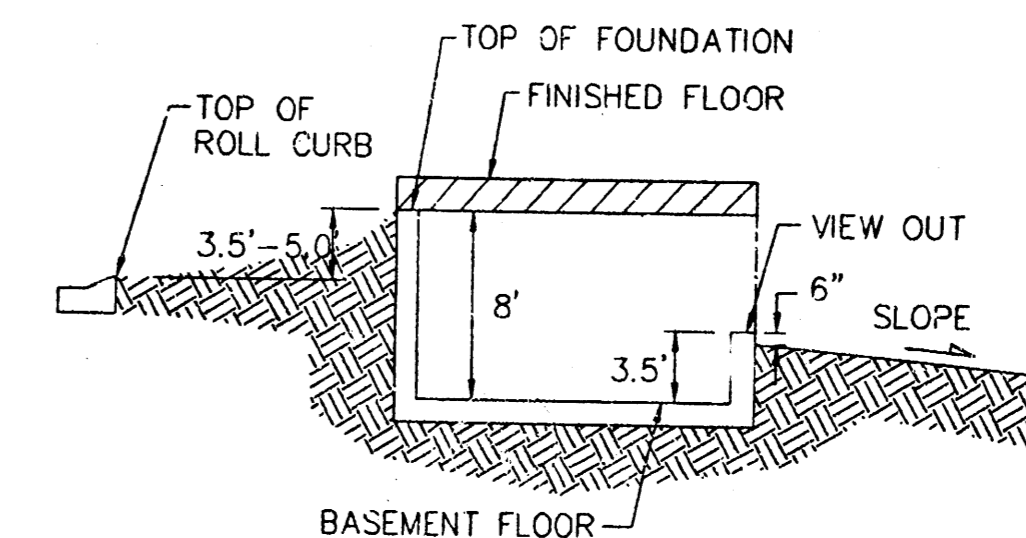
Scale: 1"=60'

NOTE:

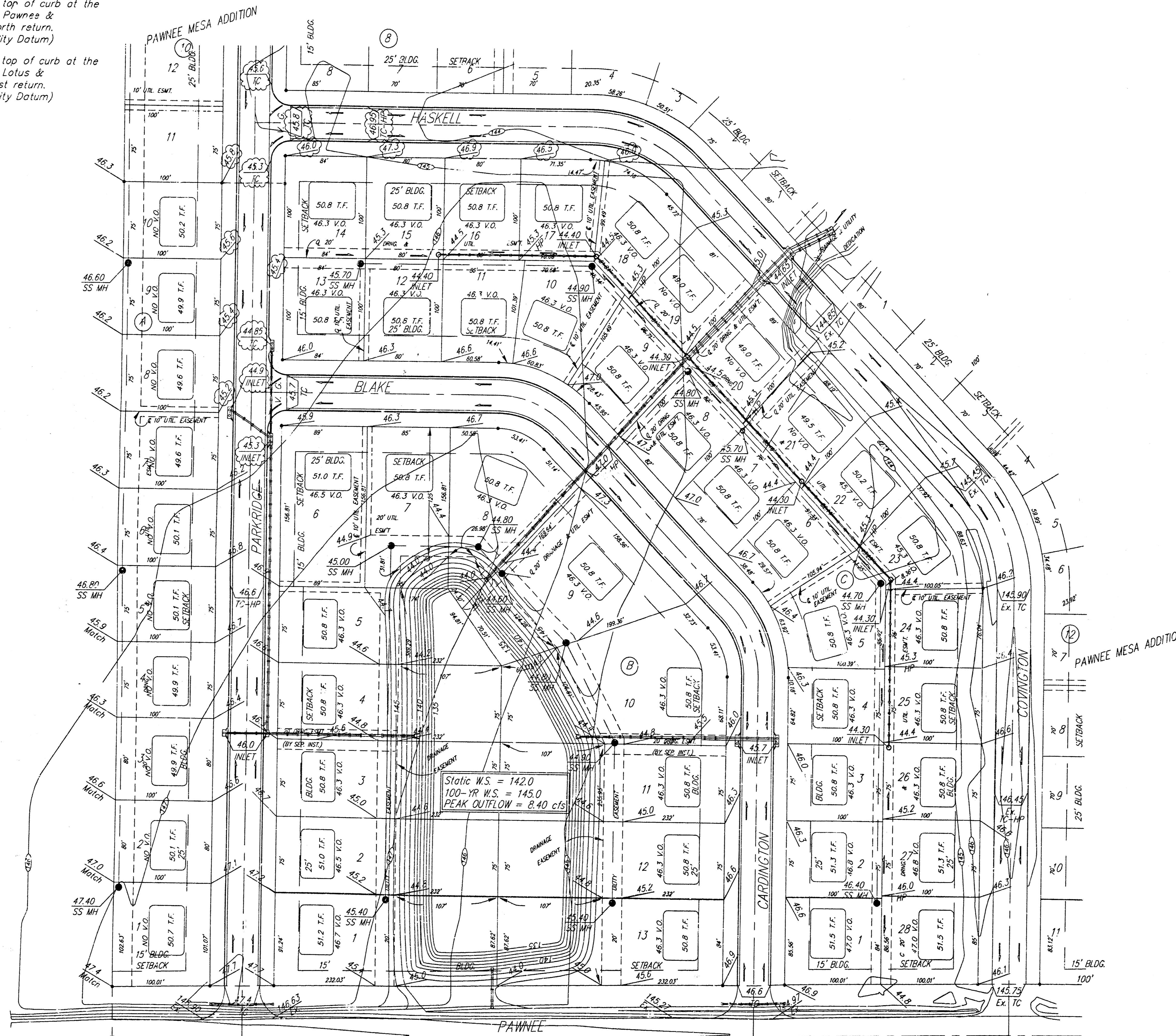
Proposed top of foundation are shown on plans.
Contractor to set finish floor elevation.

All street elevations shown on plans are for top of curb (full height).

View-out elevations are denoted as XX.X V.O.



TYPICAL VIEW OUT
NO SCALE



Revised 6/8/99 Per NBW

HUNTER'S RIDGE ADDITION
GRADING PLAN
WICHITA, KANSAS

BAUGHMAN COMPANY P.A.
ENGINEERING, SURVEYING, & PLANNING
316-262-7271 • 315 ELLIS • WICHITA, KANSAS 67211

DESIGN	DRAWN	APPROVED	DATE	SCALE	SHEET
NBW	JMG		3-99	NOTED	1 OF 1

HUNTER'S RIDGE 99-02-E282