
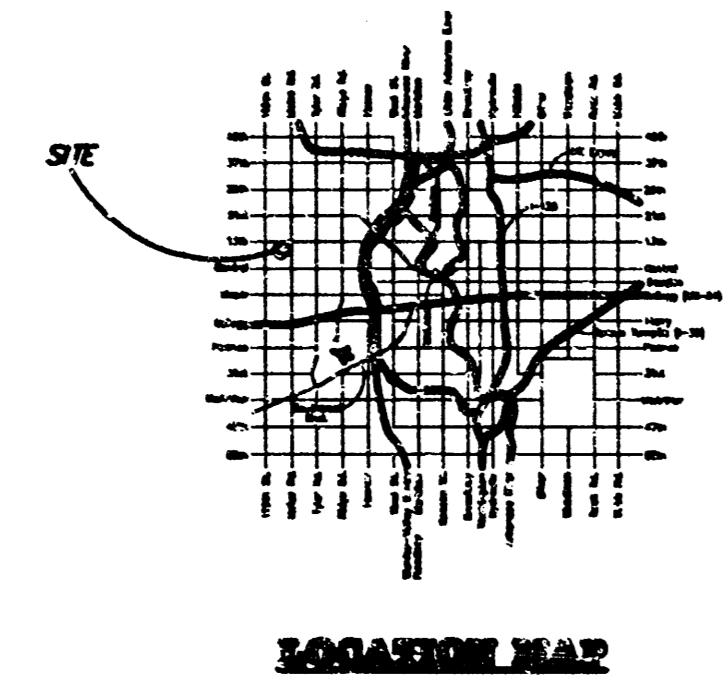
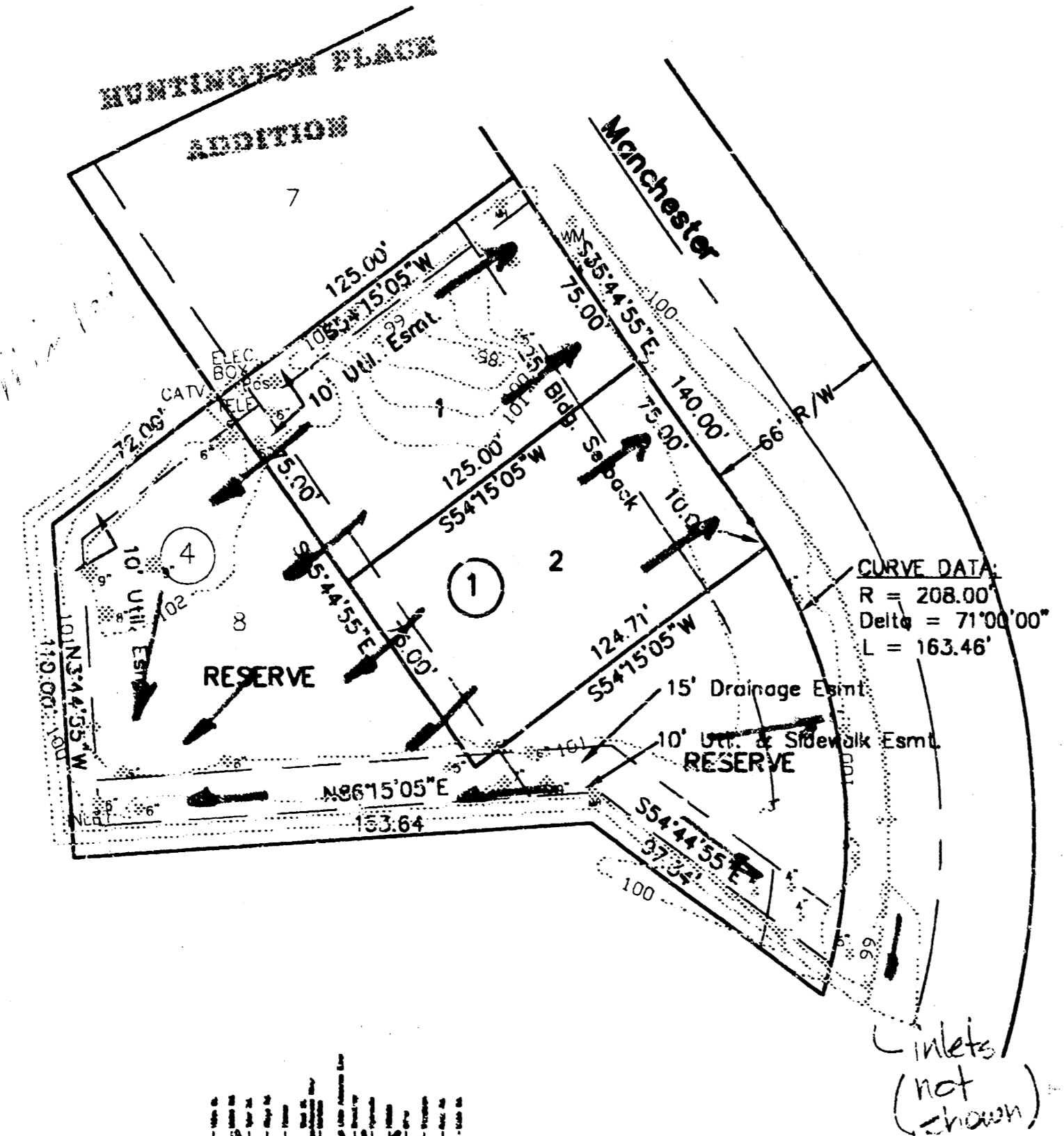


$A = 0.99 \text{ AC}$
 $i = 4.56 \text{ 1/100}$
 $C_e = 0.52$
 $C_d = 0.65$
 $Q_e = 2.44 \text{ cfs}$
 $Q_d = 2.93 \text{ cfs}$


 SCALE: 1" = 10'



DRAINAGE PLAN

HUNTINGTON PLACE 6TH ADDITION

AN ADDITION TO WICHITA, SEDGWICK COUNTY, KANSAS

Note:
Community Unit Plan
DP-152 on file with
Metropolitan Area Dept.

State of Kansas } ss
Sedgwick County } ss
I, the undersigned licensed land surveyor in aforesaid county and state, do hereby certify that, under the supervision of the undersigned, we have surveyed and plotted "HUNTINGTON PLACE 6TH ADDITION", Wichita, Sedgwick County, Kansas and that the accompanying plot is a true and correct exhibit of the property surveyed, described as follows:

A tract of land lying in the Northeast Quarter of Section 18, Township 27 South, Range 1 West of the Sixth Principal Meridian, Sedgwick County, Kansas, more particularly described as follows: Lot 8, Block 4 Huntington Place Addition

All being situated in Sec. 18, Twp. 27-S, R-1-W, of the 6th P.M., Sedgwick County, Kansas.

Existing public dedications and easements, being vacated by virtue of K.S.A. 12-512(b).

Surveyor
Lowell D. High, L. S. #685

Know all men by these presents that I, the undersigned owner have caused the land described in the Surveyors certificate to be plotted into lots to be known as "HUNTINGTON PLACE 6TH ADDITION", Wichita, Sedgwick County, Kansas. The utility easements are hereby granted for the construction and maintenance of all public utilities. The drainage easement is hereby granted to the public for construction and maintenance of a public storm sewer. The sidewalk easement is plotted for construction of sidewalk to be maintained by the Homeowners Association. The reserve is for use of the Homeowner's Association in accordance with the Community Unit Plan.

Tom Barrego, President
Huntington Place Owner's Association

State of Kansas } ss
Sedgwick County } ss
The foregoing instrument was acknowledged before me, this ____ day of _____, 1998, by Tom Barrego, President, Huntington Place Owner's Association personally known to be the same person who executed the foregoing instrument of writing and duly acknowledged the execution of same on behalf of the association.

Notary Public

My App'l. Exp. _____

State of Kansas } ss
City of Wichita } ss
This plot of "HUNTINGTON PLACE 6TH ADDITION", Wichita, Sedgwick County, Kansas, has been submitted to and approved by the Wichita-Sedgwick County Metropolitan Area Planning Commission, Wichita, Kansas.
Dated this ____ day of _____, 1998.
Wichita-Sedgwick County Metropolitan Area Planning Commission.

Richard Lopez, Chair

Marvin S. Kraut, Secretary

State of Kansas } ss
City of Wichita } ss

This plot approved and all dedications shown hereon accepted by the City Council of the City of Wichita, Kansas, this ____ day of _____, 1998.

Bob Knight, Mayor

Pat Burnett, City Clerk

Entered on transfer record this ____ day of _____, 1998.

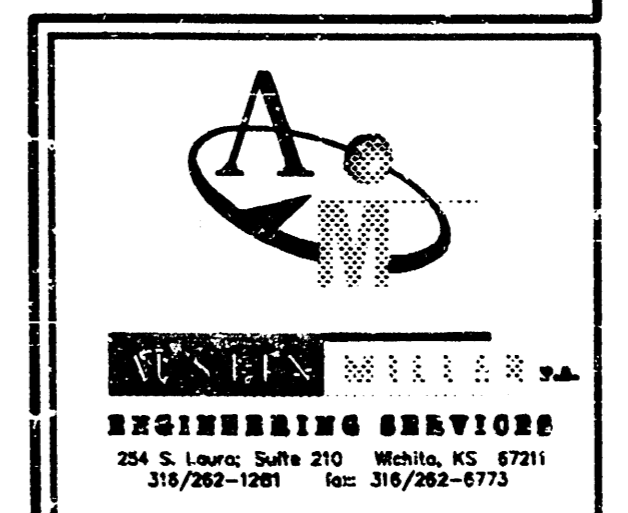
James Alford, County Clerk

State of Kansas } ss
Sedgwick County } ss

This is to certify that this plot has been filed for record in the office of the Register of Deeds, this ____ day of _____, 1998, at ____ o'clock ____; and is duly recorded.

Larry L. Consover

Michael D. Hurtt, Deputy

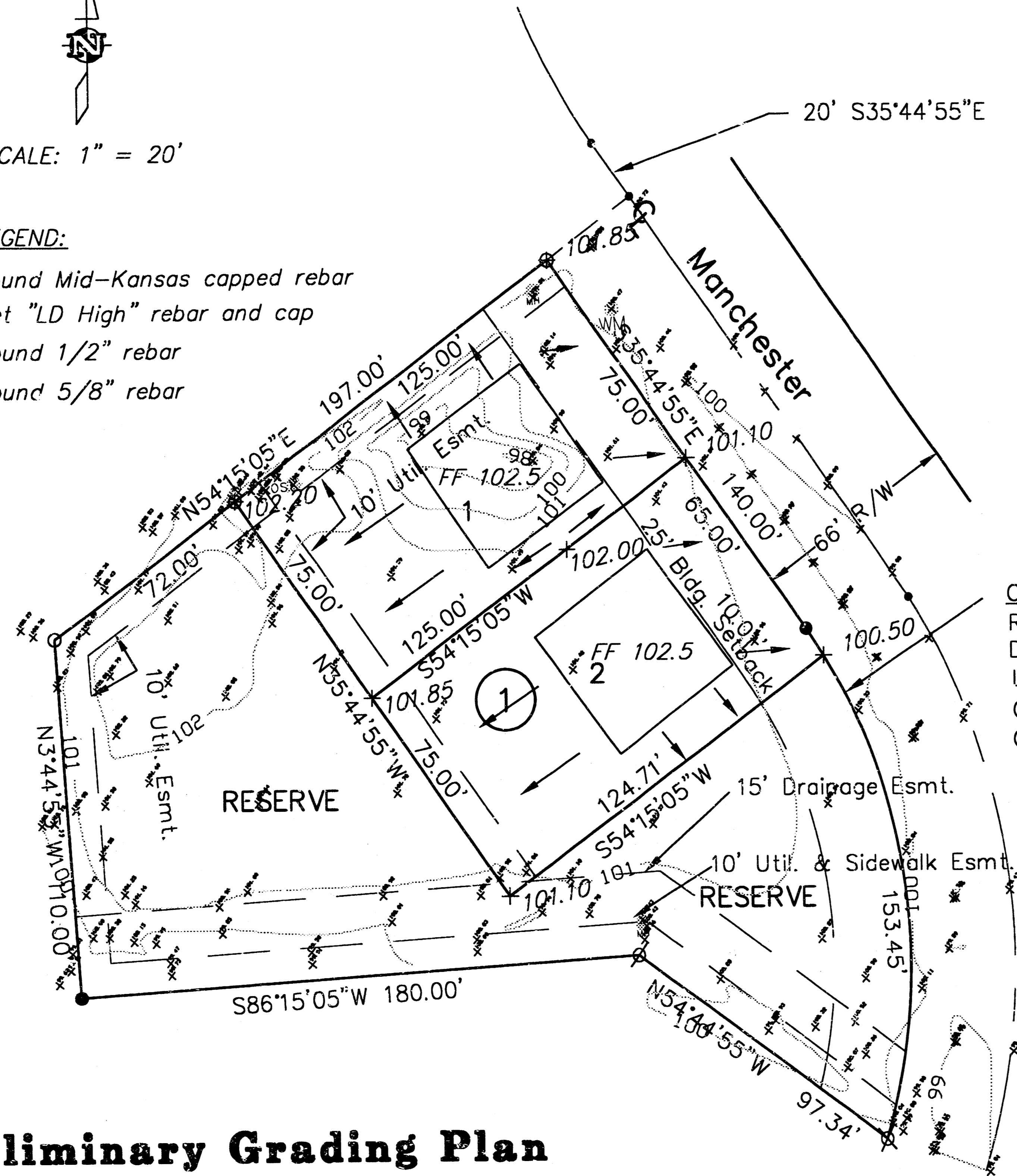




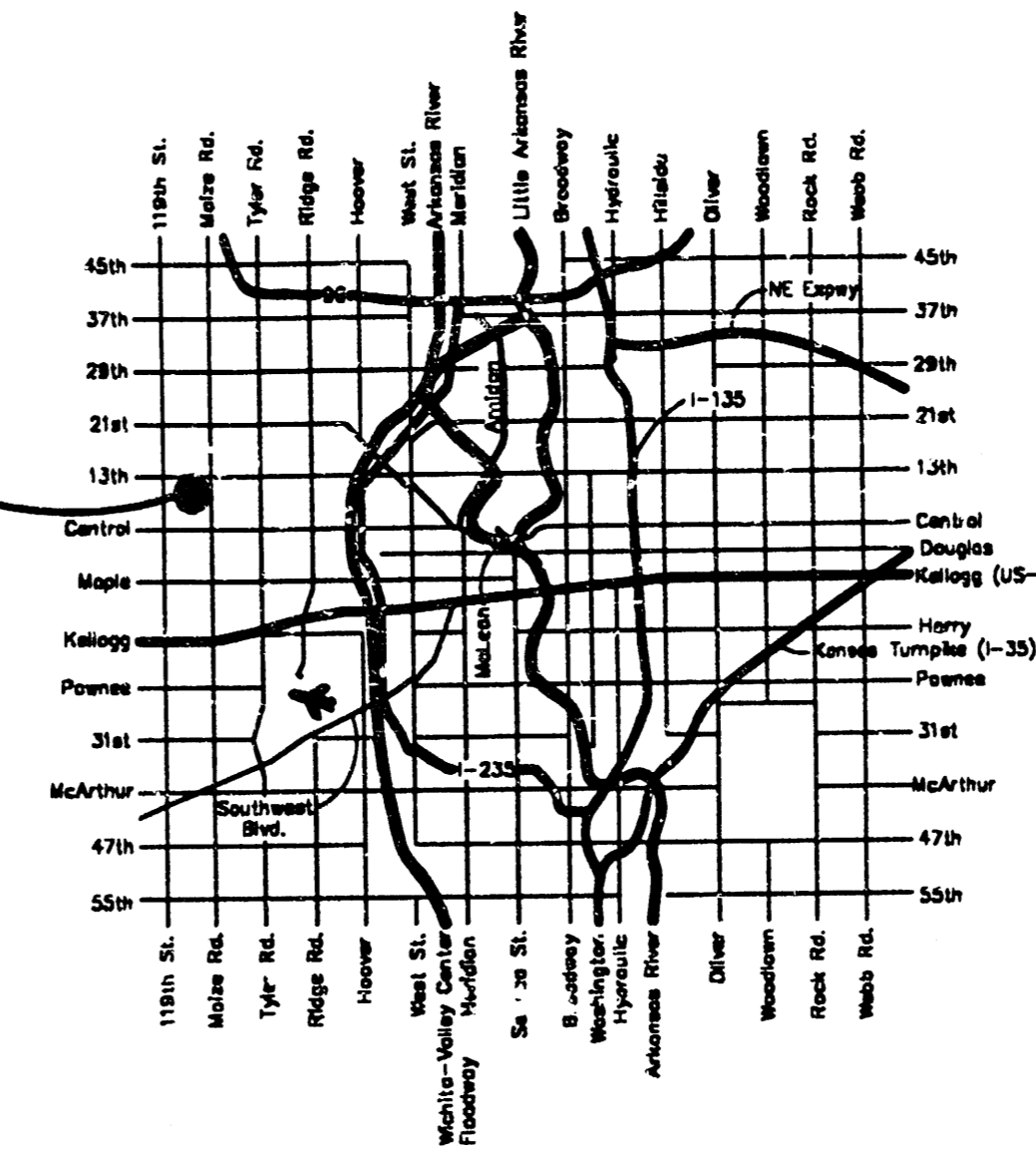
SCALE: 1" = 20'

LEGEND:

- Found Mid-Kansas capped rebar
- Set "LD High" rebar and cap
- ∅ Found 1/2" rebar
- ⊗ Found 5/8" rebar



SITE



LOCATION MAP

Note:

Community Unit Plan
DP-152 on file with
Metropolitan Area Dept.

CURVE DATA:

R = 175.00'
Delta = 53°31'03"
L = 163.46'
Chd = 157.58'
Chd Brg. = S8°59'24"E

SITE DATA:

A = .99 AC
i = 4.22 in/hr
C = 0.55
Q = 2.3 cfs

**Preliminary Grading Plan
Huntington Place 6th Addition**

NOTE: Grading plan to be revised and
resubmitted as may be required.

97107\lotgrade

