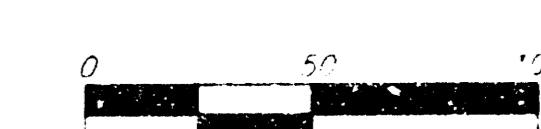


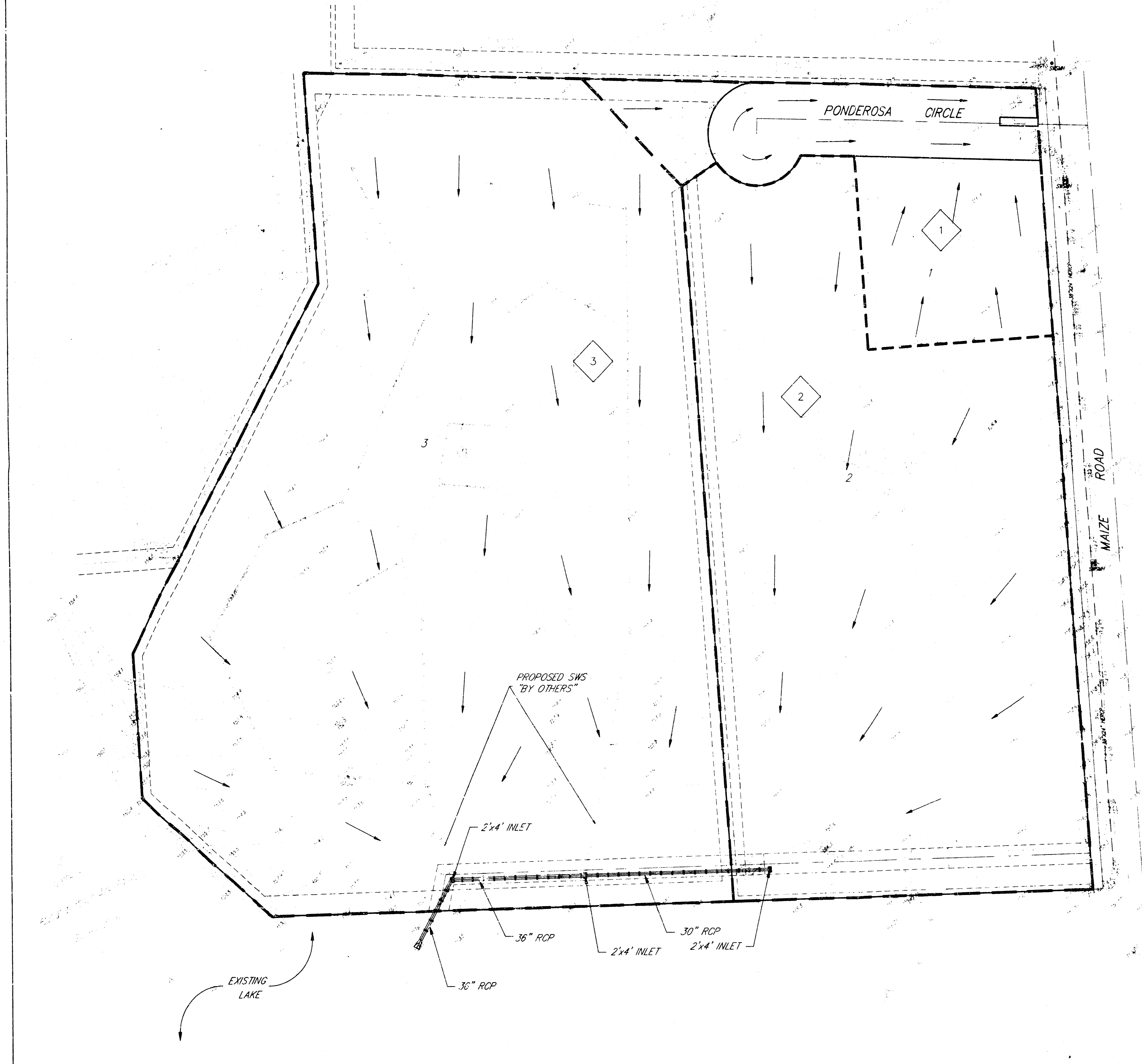
DRAINAGE PLAN HUNTINGTON PARK ADDITION WICHITA, SEDGWICK COUNTY, KANSAS



Minimum Pad Elevation for
Huntington Park Addition
Lot 1, Block 1
Min. Pad = 154.0 (City Datum)
(1341.4 U.S.G.S.)

Note:
Utilities per city records
(Not Field Verified)

BENCHMARK
City of Wichita benchmark, NW Corner
intersection of Maize Road and 13th
Street North, 109.5' north and 71'
West of center line both 2' east of
east face walk.



Huntington Park Addition Drainage

Drainage Basin #1
Lot 1, Blk. 1 in its entirety will drain towards the north to the Ponderosa Circle right-of-way. The runoff will then flow within the right-of-way to Maize Road where it will be intercepted by the City of Wichita municipal storm water sewer system.
Drainage Area = 1.0 acres
land usage:
approx. 15% roof top, 40% pavement, and 45% parking lot

Return Period	2-yr	5-yr	10-yr	100-yr
Parking lot "C"	0.87	0.87	0.88	0.89
Roof Top "C"	0.80	0.85	0.90	0.91
Pavement "C"	0.87	0.88	0.90	0.91
Area Weighted "C"	0.86	0.87	0.89	0.91
Rainfall Intensity, T _r =15 min	3.83	4.56	5.22	7.57
Peak Flowrate, cfs	3.29	3.97	4.05	6.71

Drainage Basin #2
Lot 2, Blk. 1 will drain south to a storm water sewer inlet located within a 20' drainage easement. Runoff from this basin will be transported by a storm water sewer system to Reserve "A" of Arlington Place 2nd Addition.
Drainage Area = 2.2 acres
land usage: approx. 75% parking, 15% roof top, and 10% urban lawn, hydrologic group C

Return Period	2-yr	5-yr	10-yr	100-yr
Parking lot "C"	0.87	0.87	0.88	0.89
Roof Top "C"	0.80	0.85	0.90	0.91
Urban lawn, Soil Group C	0.26	0.29	0.37	0.33
Area Weighted "C"	0.80	0.81	0.83	0.86
Rainfall Intensity, T _r =15 min	3.83	4.56	5.22	7.57
Peak Flowrate, cfs	10.7	12.9	15.2	22.2

Drainage Basin #3
Lot 3, Blk. 1, will drain south to a storm water sewer inlet. Runoff will be conveyed by an underground storm water sewer to Reserve "A" of Arlington Place 2nd Addition.
Drainage Area = 6.3 acres
land use: unspecified multi-family soil group C

Return Period	2-yr	5-yr	10-yr	100-yr
Multi-family Soil Group C	0.68	0.72	0.77	0.83
Rainfall Intensity, T _r =15 min	3.83	4.56	5.22	7.57
Peak Flowrate, cfs	16.4	20.7	25.3	38.5

October 18, 1996