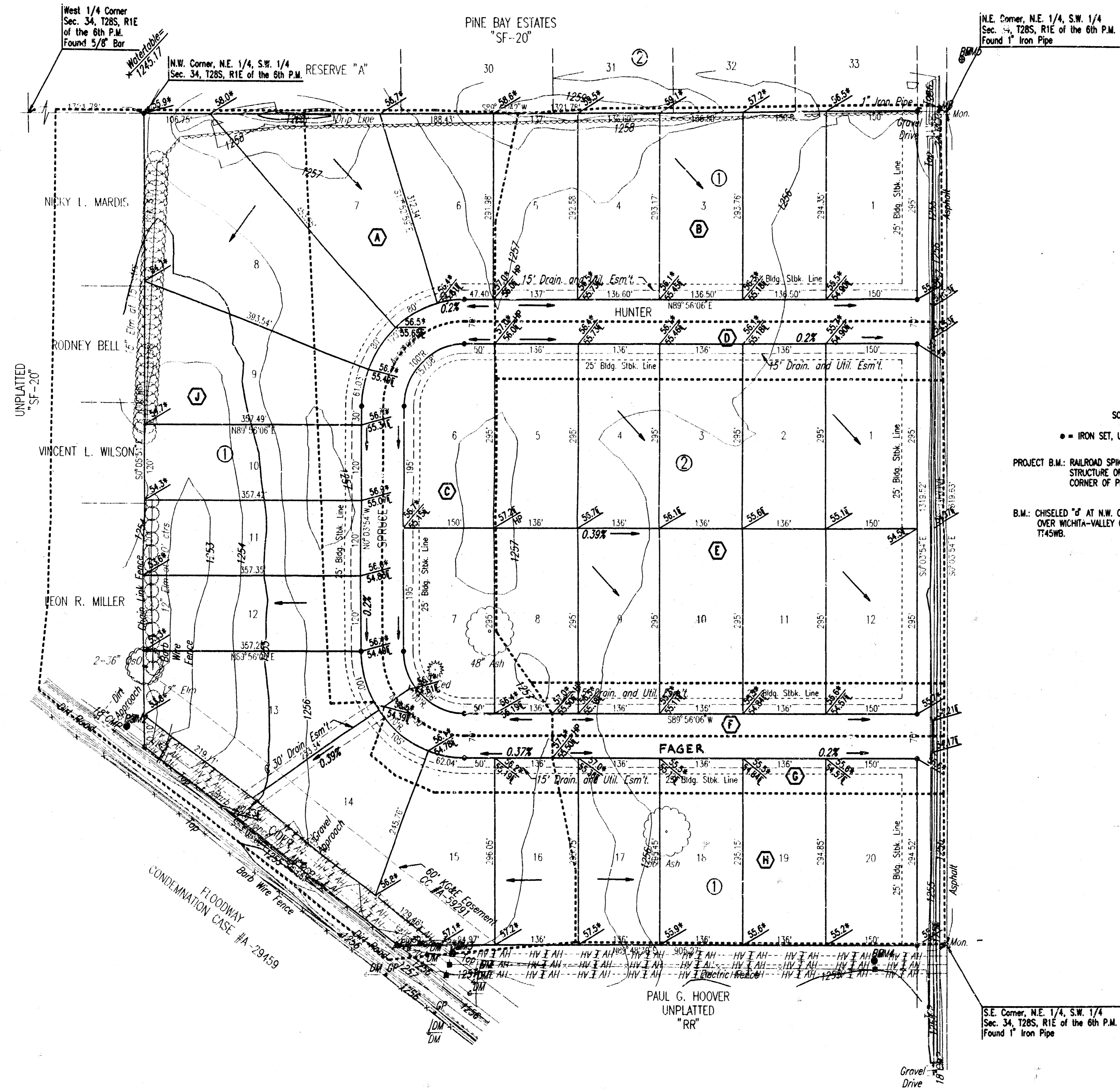


# DRAINAGE PLAN HUNTINGTON POINTE ADDITION TO SEDGWICK COUNTY, KANSAS



SCALE: 1"=100'  
 • = IRON SET, UNLESS NOTED OTHERWISE  
 PROJECT B.M.: RAILROAD SPIKE ON WEST FACE OF NORTH POLE STRUCTURE OF HIGHLINE ELECTRIC NEAR S.E. CORNER OF PROPERTY. ELEV.=1257.20 M.S.L.  
 B.M.: CHISELED "d" AT N.W. CORNER OF HUBGUARD ON BRIDGE OVER WICHITA-VALLEY CENTER FLOODWAY FROM U.S.G.S. T145WB. ELEV.=1268.58 M.S.L.

- LEGEND**
- (A) BASIN IDENTIFIER
  - BASIN BOUNDARY
  - STORM WATER FLOW DIRECTION
  - SPOT ELEVATION
  - HIGH POINT ELEVATION
  - MATCH EXISTING ELEVATION
  - FLOWLINE ELEVATION

DSNP: KEP, CPER, JAKB SCALE: 1"=100.00  
 01/19/98 10:57:55 (Dsnpp) 05-03-1999 11:04:04 am

HUNTINGTON POINTE ADDN

APPROVED  
 DRAINAGE PLAN  
 Approved by the  
 County