

# DRAINAGE PLAN IVY CHRISTINE ADDITION

WICHITA, SEDGWICK COUNTY, KANSAS

The east 5 Acres of the West 15 Acres of the NW1/4 of the NE1/4 of Sec. 27, Twp. 27-S, R-1-W of the 6th P.M., Sedgwick County, Kansas, except the N1/2 thereof.

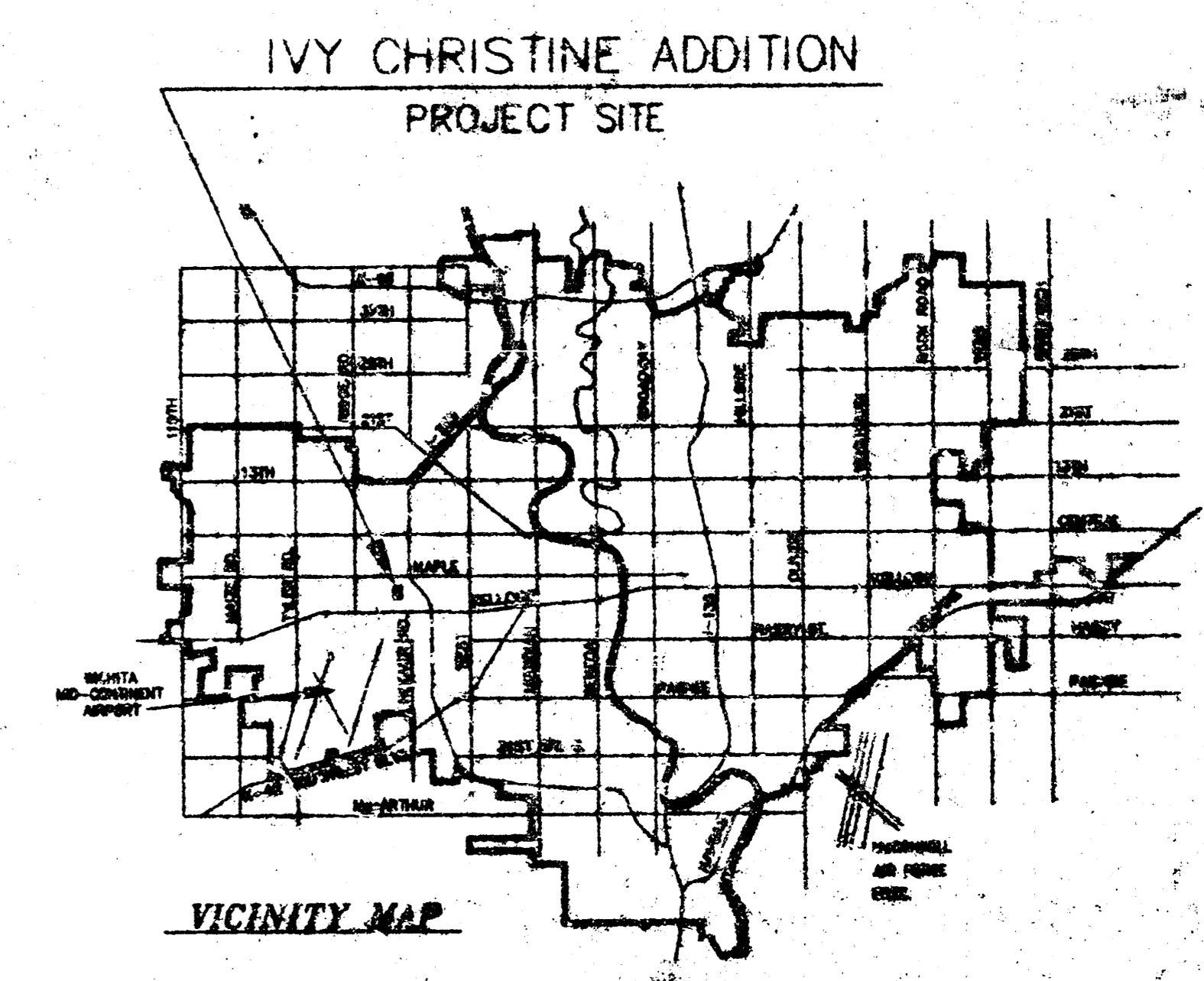
JAMES JAHANSOOZ  
118 S. WARS  
WICHITA, KS 67209  
PH 722-0608

GROSS SIZE  
99,081.27 SQ. FT. ±  
2.27 ACRES ±

NET SIZE  
80,491.28 SQ. FT. ±  
1.85 ACRES ±

MINIMUM LOT SIZE  
8,398.5 SQ. FT. ±

BENCH MARK:  
RAILROAD SPIKE IN POWER POLE  
15.8' S. OF S.W. COR. LOT 12, MAPLE LAKE ADD.  
ELEV. = 121.85 (CITY OF WICHITA DATUM)



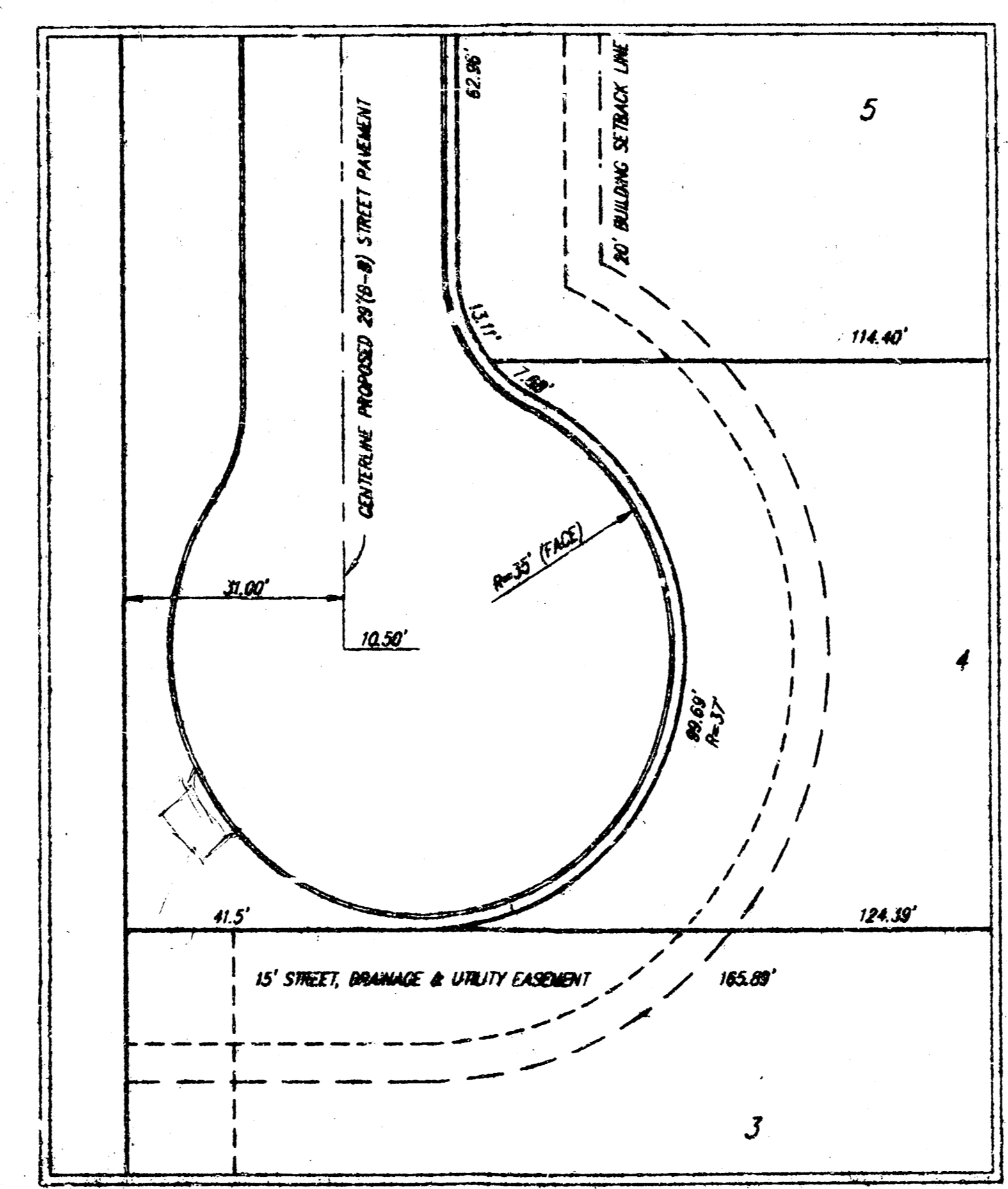
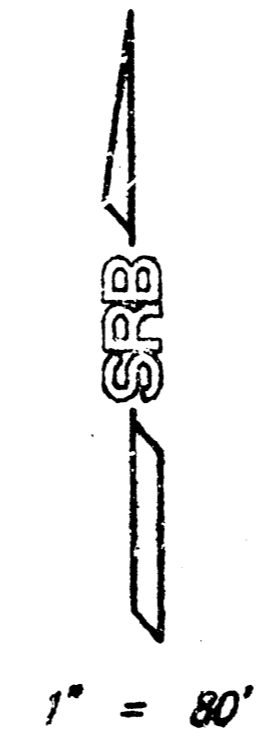
**DRAINAGE PLAN  
IVY CHRISTINE ADDITION**

**SRB** 624 NORTH BATH WICHITA, KANSAS 67203 316-264-8208 FAX 316-264-4621

**SAVOY, RUGGLES & EDWIN, P.A.**  
ENGINEERING & SURVEYING

|      |        |          |         |    |
|------|--------|----------|---------|----|
| DATE | DESIGN | REVISION | DATE    | BY |
|      |        |          | 0-18-96 |    |

DWG FILE 00437P.DWG  
PROJECT NO. 9800437P



CUL-DE-SAC DETAIL  
SCALE: 1" = 20'

AREA = 1.74 ACRES  
TYPE B SOIL  
 $C_p = 0.46$   
 $C_{100} = 0.61$   
 $I_p = 3.83"/HR.$   
 $I_{100} = 7.37"/HR.$   
 $T_p = 15 MINUTES$   
 $Q_p = 3.1 CFS$   
 $Q_{100} = 7.8 CFS$

AREA = 0.53 ACRES  
TYPE B SOIL  
 $C_p = 0.46$   
 $C_{100} = 0.61$   
 $I_p = 3.83"/HR.$   
 $I_{100} = 7.37"/HR.$   
 $T_p = 15 MINUTES$   
 $Q_p = 0.9 CFS$   
 $Q_{100} = 2.4 CFS$

THE LANDING  
2ND ADDITION

