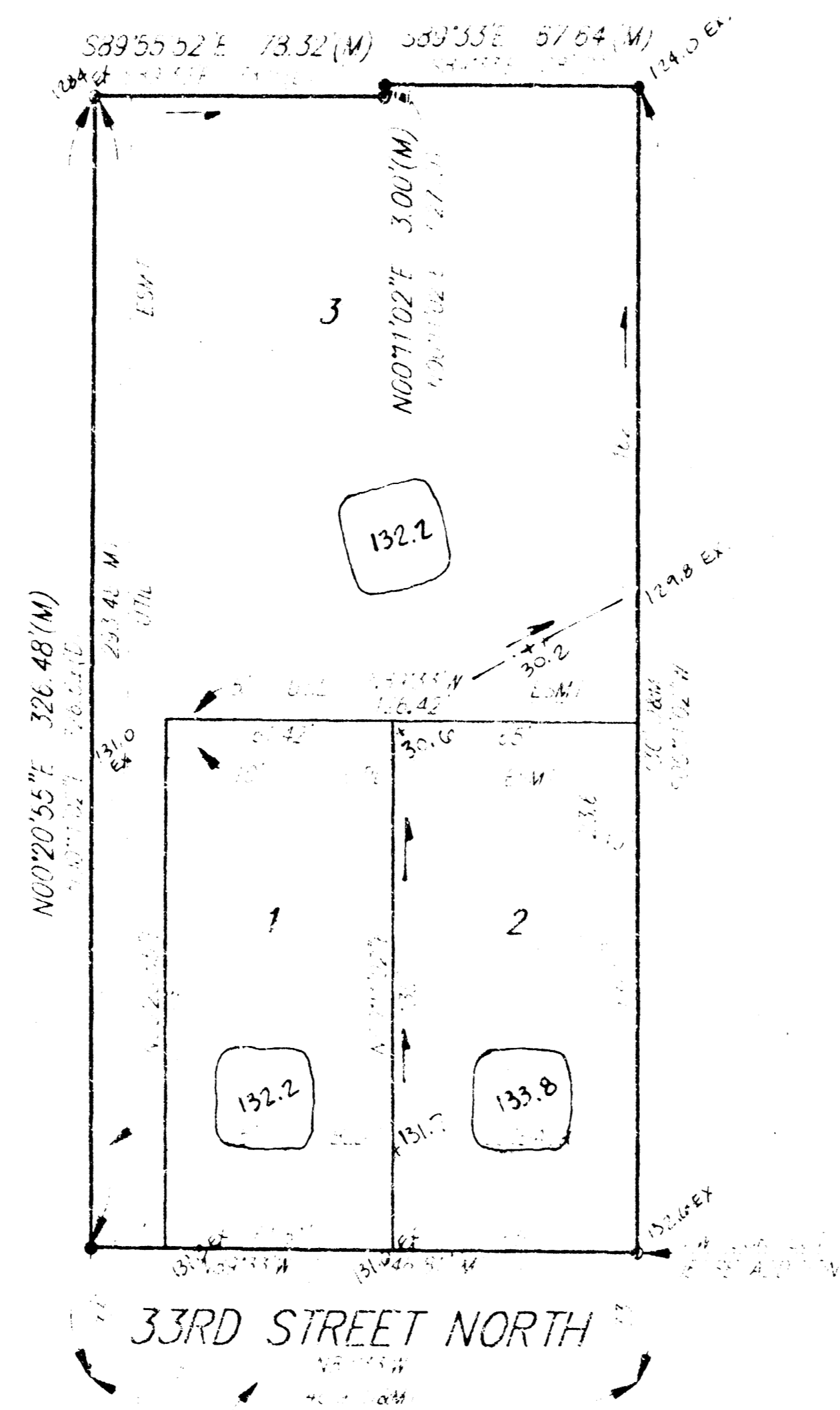


JESSE 2ND ADDITION

WICHITA, SEDGWICK COUNTY, KANSAS



• 1/4" = 10' (SEE ALL DIMENSIONS ON PLAN)
○ 1/8" = 10' (SEE ALL DIMENSIONS ON PLAN)
COUNT DIMENSIONS TO CENTER OF LOT
UNLESS OTHERWISE NOTED
M = MEASURED
MAY BE MEASURED

**APPROVED
DRAINAGE PLAN**

Subdivision Lot Grading Plan

June 7, 83

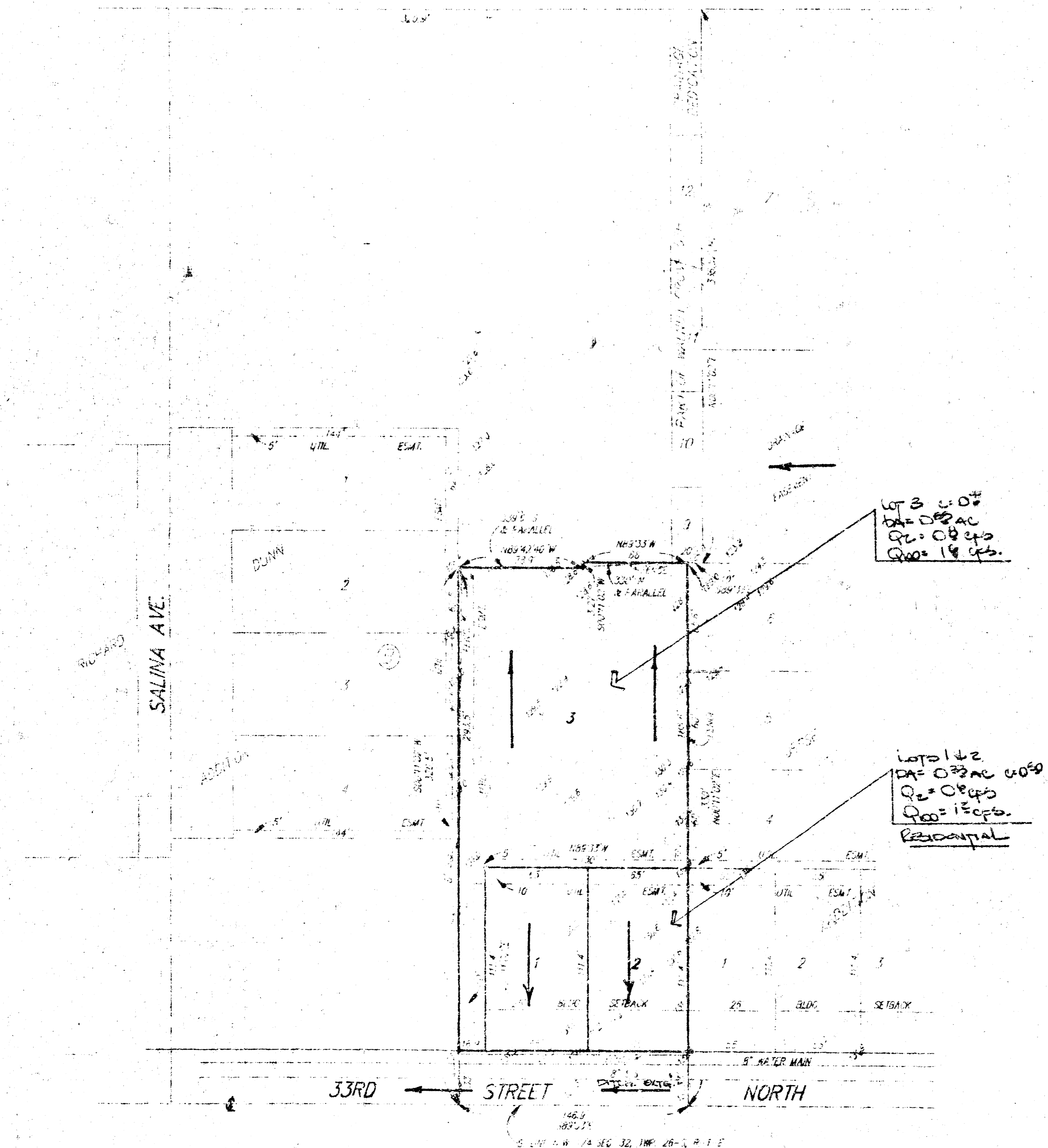
B BAUGHMAN COMPANY P. A.
ENGINEERING & SURVEYING
1616 W. 12TH • 315 ELLIS • WICHITA, KANSAS 67201

SKETCH PLAT JESSE 2ND ADDITION

WICHITA, SEDGWICK COUNTY, KANSAS

PART OF LOT 21, WALNUT GROVE ADDITION &
PART OF LOTS 5, 6, 7, 8, & 9, WALNUT GROVE ADDITION

RICHARD P. JESSE
3201 WOODLAND
WICHITA, KS 67204
PH. 333-4565



SCALE 1" = 50'
FOR DIMENSIONS IN FEET
FOR DIMENSIONS IN METERS
SEE LOT 1, WALNUT GROVE ADDITION
ELEV. = 1150.0

DRAINAGE PLAN



BAUGHMAN COMPANY P. A.
SURVEYING & ENGINEERING
316/262-7271 • 315 ELLIS • WICHITA, KANSAS 67211 29 SEP 1992