

DRAINAGE PLAN JESSE 3RD ADDITION WICHITA, SEDGWICK COUNTY, KANSAS

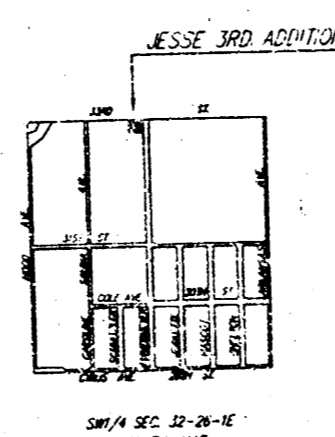
LEGAL DESCRIPTION:
Lot 15, except the west 150 feet thereof, Tennessee Gardens, Sedgwick County, Kansas.

DRAWN:
Richard P. Jasso
Eng. L. Assoc.
1220 N. Woodland
Wichita, Kansas 67204
Ph. (316) 838-4565

GROSS SIZE:
26,108.47 sq. ft. ±
0.603 Acres ±

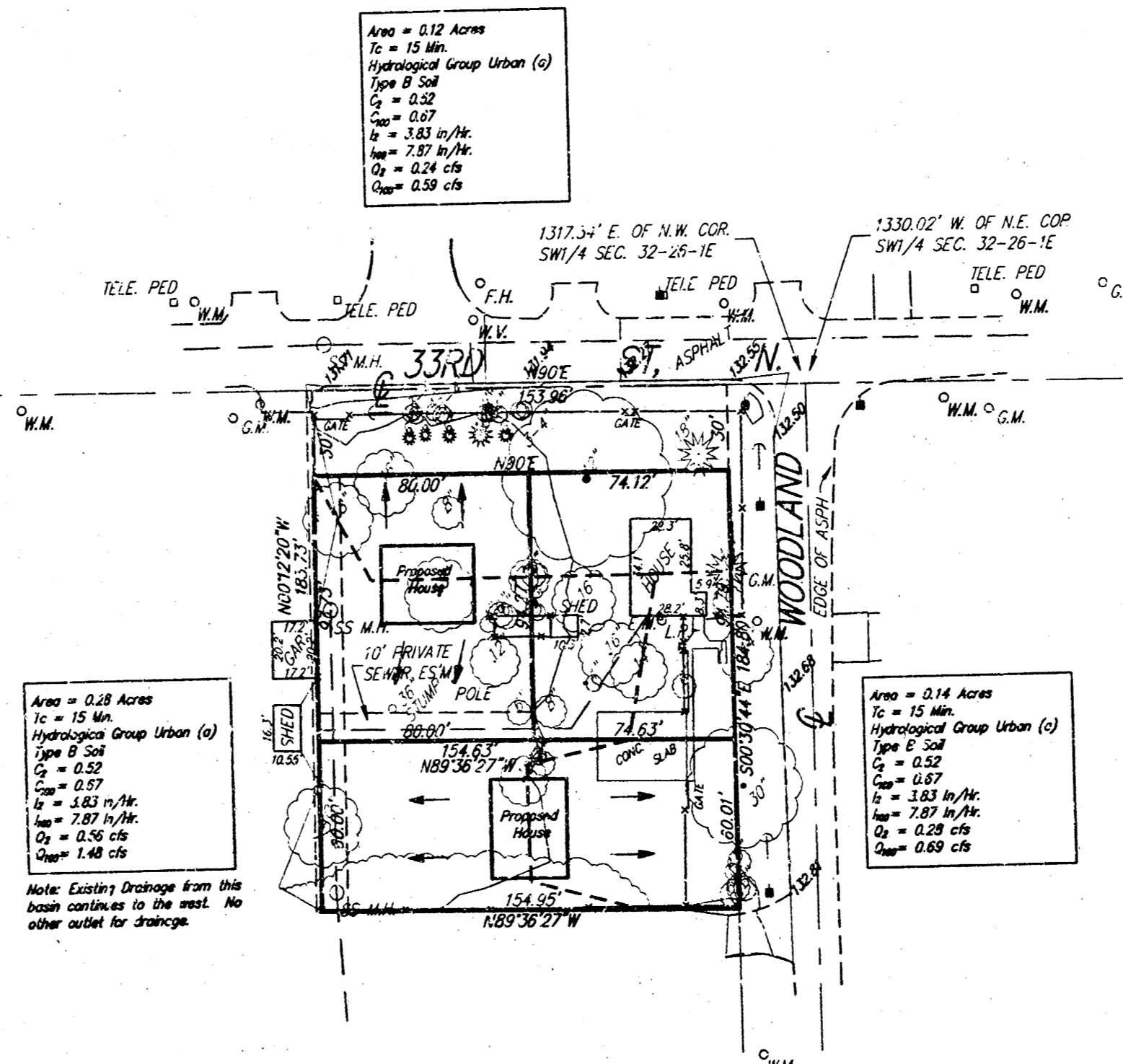
NET SIZE:
23,829.40 sq. ft. ±
0.547 Acres ±

MINIMUM LOT SIZE:
1,320 sq. ft. ±
0.03 Acres ±



BENCHMARK: CITY OF WICHITA 330.530
175' ± S 175' W OF INTERSECTION OF CENTERLINES
1300 ST. N. & SUMA ST.
ELEV. = 1214.1 (CITY DATUM)

ON SITE B.M.: R.P. SPK., IN POWER POLE
S.W. CORNER OF INTERSECTION OF
1300 ST. N. & WOODLAND
ELEV. = 1218.68 (CITY DATUM)



Area = 0.18 Acres
I_p = 15 min.
Hydrological Group Urban (U)
Type B Sub
C_s = 0.52
C_u = 0.27
I_u = 1.83 in/hr.
I_u = 2.87 in/hr.
I_u = 3.36 in/hr.
I_u = 1.48 in/hr.

Note: Excess Drainage from this basin continues to the west. No other outlet for drainage.

Area = 0.12 Acres
I_p = 15 min.
Hydrological Group Urban (U)
Type B Sub
C_s = 0.52
C_u = 0.27
I_u = 1.83 in/hr.
I_u = 2.87 in/hr.
I_u = 3.36 in/hr.
I_u = 1.48 in/hr.

Area = 0.14 Acres
I_p = 15 min.
Hydrological Group Urban (U)
Type B Sub
C_s = 0.52
C_u = 0.27
I_u = 1.83 in/hr.
I_u = 2.87 in/hr.
I_u = 3.36 in/hr.
I_u = 1.48 in/hr.

DRAINAGE PLAN JESSE 3RD ADDITION	
SRB	SAVOY, RUGGLES & BORN, P.A. ENGINEERS & SURVEYORS
DATE: 12-20-05	SCALE: AS SHOWN