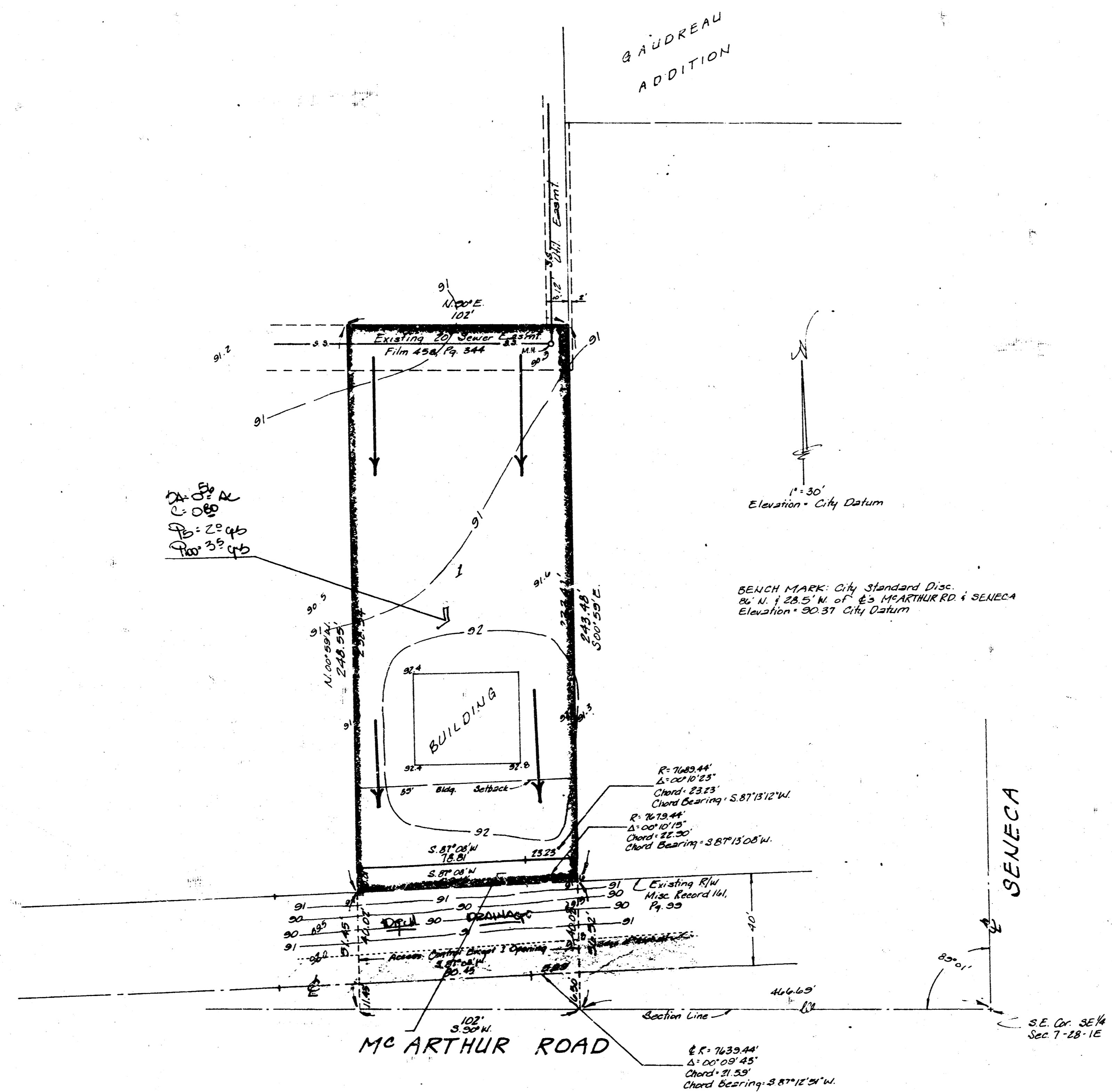


LEEDY-VOYLES ADDITION
(Drainage)



SKETCH PLAT
LEEDY-VOYLES ADDITION

A TRACT IN THE SE 1/4 SEC 7, TWP 28-N, R-1-E

OWNERS: ELVIN LEEDY
HENRY E. VOYLES
PATRICIA C. VOYLES

DRAINAGE PLAN

General Notes - The lot is to be a car wash facility which will drain south to the drainage ditch in MacArthur Road. Discharge to the ditch will be thru flumes with adequate erosion protection.

BAUGHMAN COMPANY, P.A.
SURVEYING & ENGINEERING

10 SEP 26