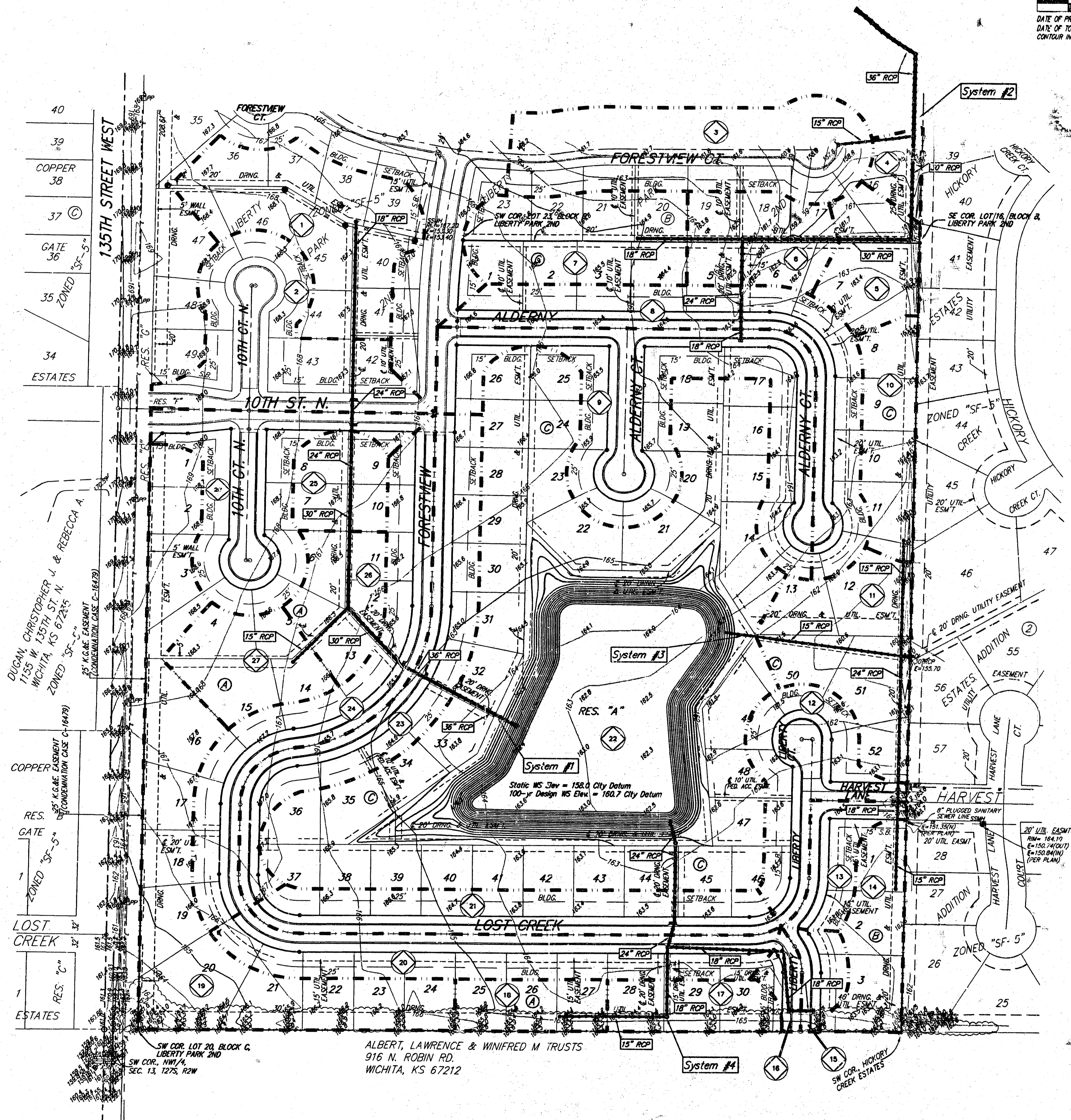
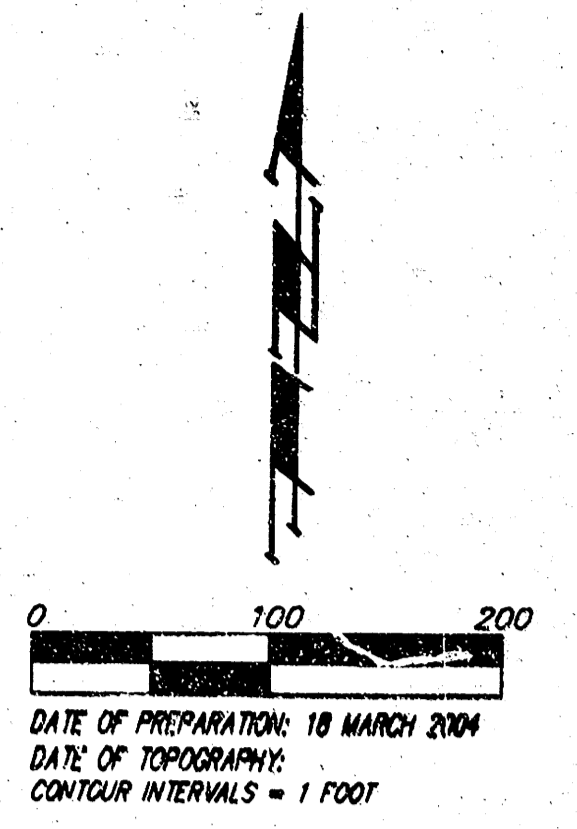


# DRAINAGE PLAN LIBERTY PARK 3RD AN ADDITION TO WICHITA, SEDGWICK COUNTY, KANSAS



40  
39  
COPPER 38  
37  
GATE 36  
35 ZONED "SF-5"  
34 ESTATES

DUCAN CHRISTOPHER J. & REBECCA A.  
1155 W. 135TH ST. N.  
WICHITA, KS 67225  
ZONED "SF-5"  
(CONDOMINIUM CASE C-14478)

COPPER  
RES. "C"  
GATE  
ZONED "SF-5"  
1  
LOST CREEK  
ESTATES

SW COR. LOT 20, BLOCK C,  
LIBERTY PARK 2ND  
SW COR. NW 1/4  
SEC. 13, T27S, R2W

ALBERT, LAWRENCE & WINIFRED M. TRUSTS  
916 N. ROBIN RD.  
WICHITA, KS 67212

SW COR. HICKORY  
CREEK ESTATES

Static WS Elev = 158.0 City Datum  
100-yr Design WS Elev = 160.7 City Datum

LOT	BLOCK	ELEVATION CITY DATUM
13-14, 20-23	C	163.5
29-35, 38-45	C	163.5
47-50	C	163.5

Basin ID	Area acres	Rational Method "C"			Peak Flowrates		
		2-yr	5-yr	100-yr	2-yr cfs	5-yr cfs	100-yr cfs
1	1.8	0.46	0.49	0.70	3.2	4.0	9.3
2	1.7	0.46	0.49	0.70	3.0	3.8	8.8
3	2.1	0.46	0.49	0.70	3.7	4.7	11
4	0.2	0.46	0.49	0.70	0.4	0.4	1.0
5	0.7	0.46	0.49	0.70	1.2	1.6	3.8
6	0.9	0.46	0.49	0.70	1.6	2.0	4.6
7	1.3	0.46	0.49	0.70	2.3	2.9	6.7
8	1.9	0.46	0.49	0.70	3.3	4.2	9.8
9	2.7	0.46	0.49	0.70	4.8	6.0	14
10	0.8	0.46	0.49	0.70	1.4	1.8	4.1
11	1.4	0.46	0.49	0.70	2.5	3.1	7.2
12	1.2	0.46	0.49	0.70	2.1	2.7	6.2
13	0.5	0.46	0.49	0.70	0.9	1.1	2.6
14	0.8	0.46	0.49	0.70	1.4	1.8	4.1
15	0.3	0.46	0.49	0.70	0.5	0.7	1.5
16	0.2	0.46	0.49	0.70	0.4	0.4	1.0
17	0.6	0.46	0.49	0.70	1.1	1.3	3.1
18	0.5	0.46	0.49	0.70	0.9	1.1	2.6
19	3	0.46	0.49	0.70	5.3	6.7	15
20	1.6	0.46	0.49	0.70	2.8	3.6	8.3
21	1.5	0.46	0.49	0.70	2.6	3.4	7.7
22	10.7	0.61	0.63	0.78	25	31	62
23	1.7	0.46	0.49	0.70	3.0	3.8	8.8
24	1.8	0.46	0.49	0.70	3.2	4.0	9.3
25	0.6	0.46	0.49	0.70	1.1	1.3	3.1
26	0.7	0.46	0.49	0.70	1.2	1.6	3.6
27	0.8	0.46	0.49	0.70	1.4	1.8	4.1
28	1.6	0.46	0.49	0.70	2.8	3.6	8.3

**BENCHMARK:**  
135th St. W. & 13th St. N. - City of  
Wichita Benchmark Disc, SE corner of  
intersection  
56' East of Centerline  
55' South of Centerline  
Elev. = 167.85 City Datum  
(1355.23 NGVD29)

604 Nail in High Line Pole, 800' W. &  
31' N. of the NE cor., NW 1/4, Sec. 13,  
T27S, R2W  
Elev. = 1390.08 NGVD29  
(162.68 City Datum)

