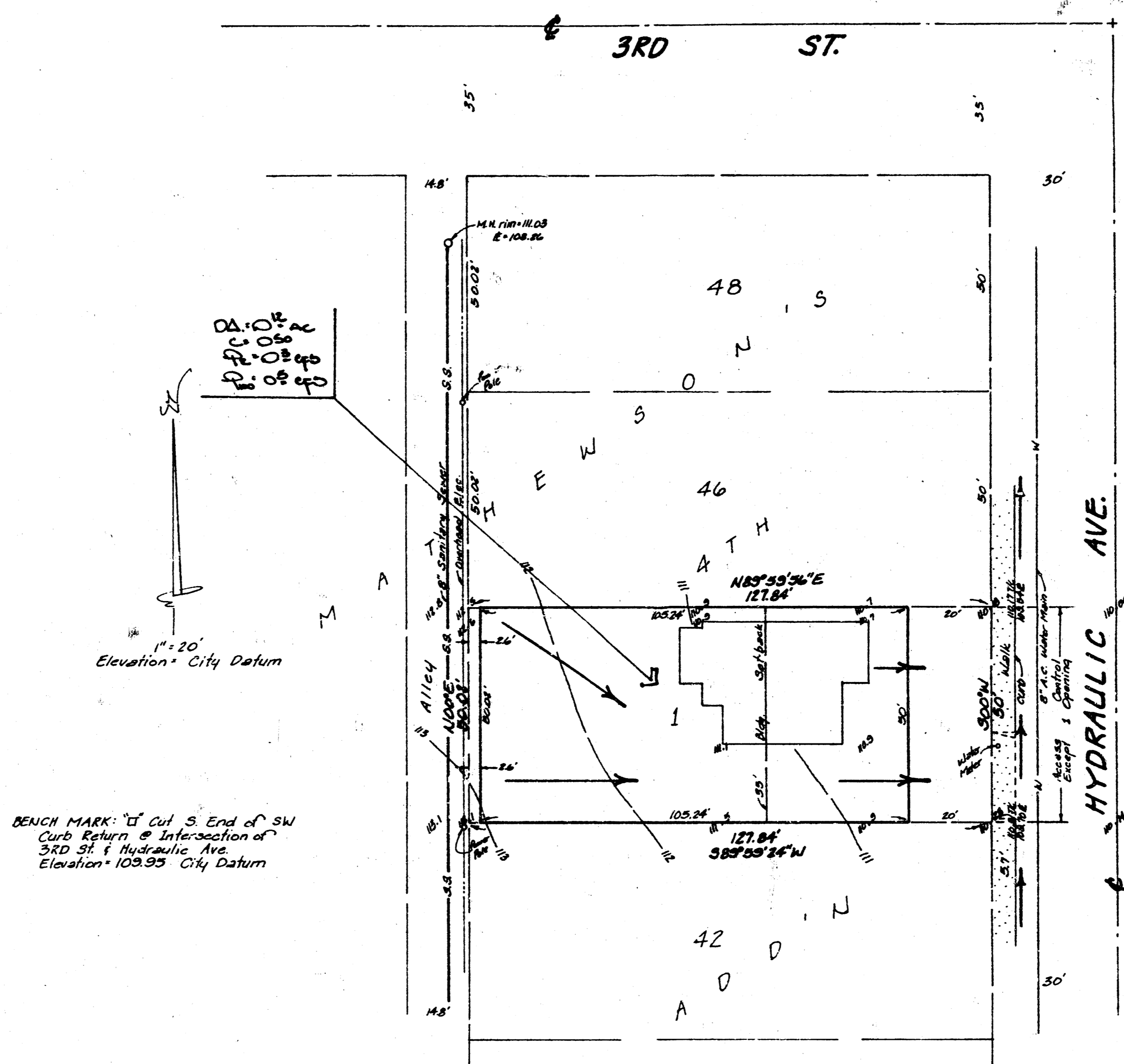


RICHARD LOFFLAND ADDITION
(Drainage)



SKETCH PLAT

RICHARD LOFFLAND ADDITION

REPLAT OF LOT 44, ON HYDRAULIC AVE, MATHEWSON'S 4TH ADDITION
TO WICHITA, SEDGWICK COUNTY, KANSAS

OWNER: RICHARD A. LOFFLAND
DANA RENEE LOFFLAND

DRAINAGE PLAN

BAUGHMAN COMPANY, P.A.
SURVEYING & ENGINEERING
31600-7211 • 216 ELLIS • WICHITA, KANSAS 67211

20 May 1997