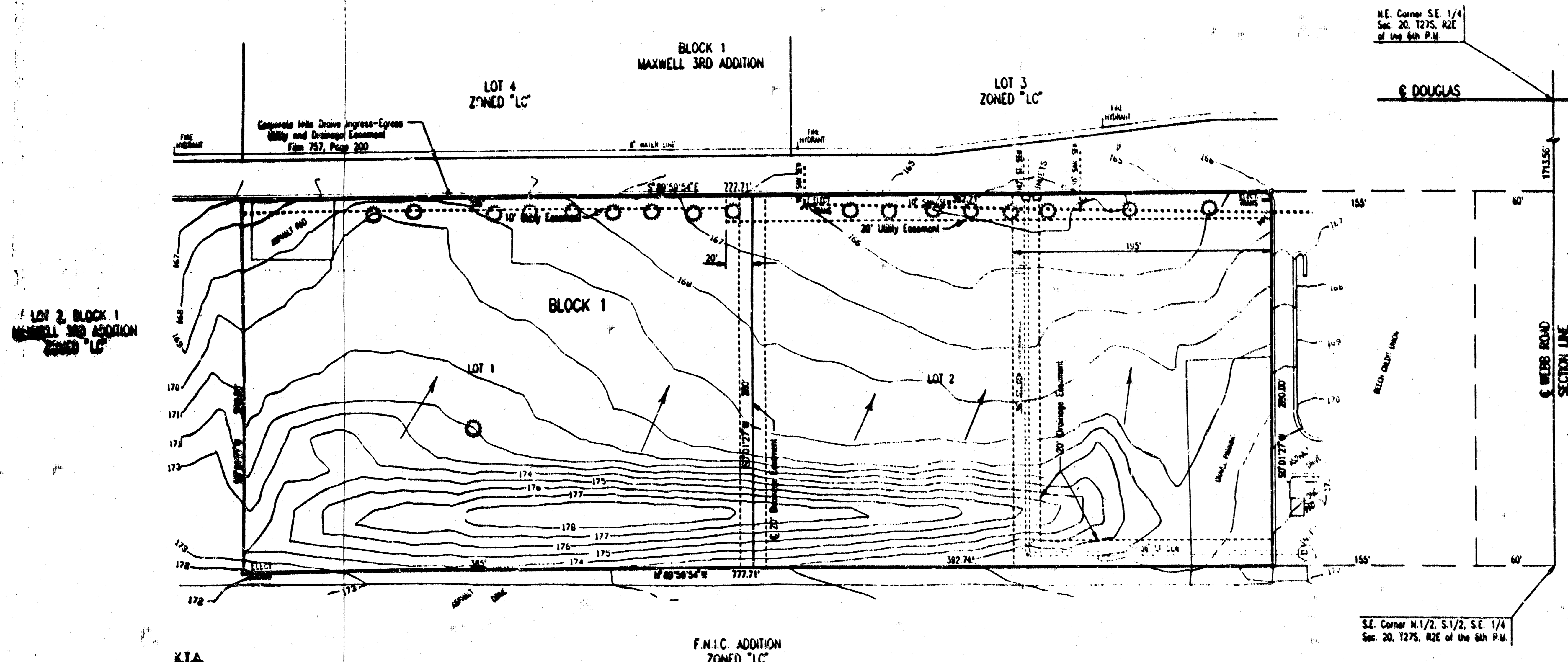


DRAINAGE PLAN 8-28-95
MAXWELL 4TH ADDITION
 TO WICHITA, SEDGWICK COUNTY, KANSAS

OWNER: HUGH S. AND BARBARA MAXWELL
 c/o GARY SYNDER
 7701 E. KELLOGG, SUITE 200
 WICHITA, KANSAS 67207

ENGINEER: PROFESSIONAL ENGINEERING CONSULTANTS, P.A.
 303 S. TOPEKA
 WICHITA, KANSAS 67202



SCALE: 1"=50'
 8-21-95
 0 = IRON SET
 TOPOGRAPHY DATE: JULY 20, 1995
 BY MUNICIPAL ENGINEERS
 B.M. - CITY OF WICHITA STD. DISC. 73' SOUTH AND
 31' EAST OF THE INTERSECTION OF THE CENTERLINES
 OF WEBER ROAD AND KELLOGG.
 ELEV. = 176.16 CITY DATUM
 ELEV. = 1366.56 U.S.C.
 FOR SETBACK LINES SEE AMENDED C.U.P. DP-116

HYDROLOGY

BASIN	USE	AREA (Ac.)	C _e	C ₁₀₀	L _e	L ₁₀₀	Q _e	Q ₁₀₀
LOT 1	COMMERCIAL	2.5	0.68	0.80	3.80	7.36	6.5	14.7
LOT 2	COMMERCIAL	2.5	0.68	0.80	3.80	7.36	6.5	14.7

NOTE: ALL STORMWATER RUNOFF SHALL BE DIRECTED BY PRIVATE STORM SEWER, OVERLAND FLOW, STREETS, DRIVES, FLUMES, OR ANY OTHER APPROVED MEASURES TO THE EXISTING CITY OF WICHITA STORM SEWER SYSTEM.