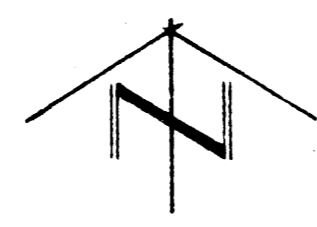


HOMER MORGAN SECOND ADDITION
(Drainage)

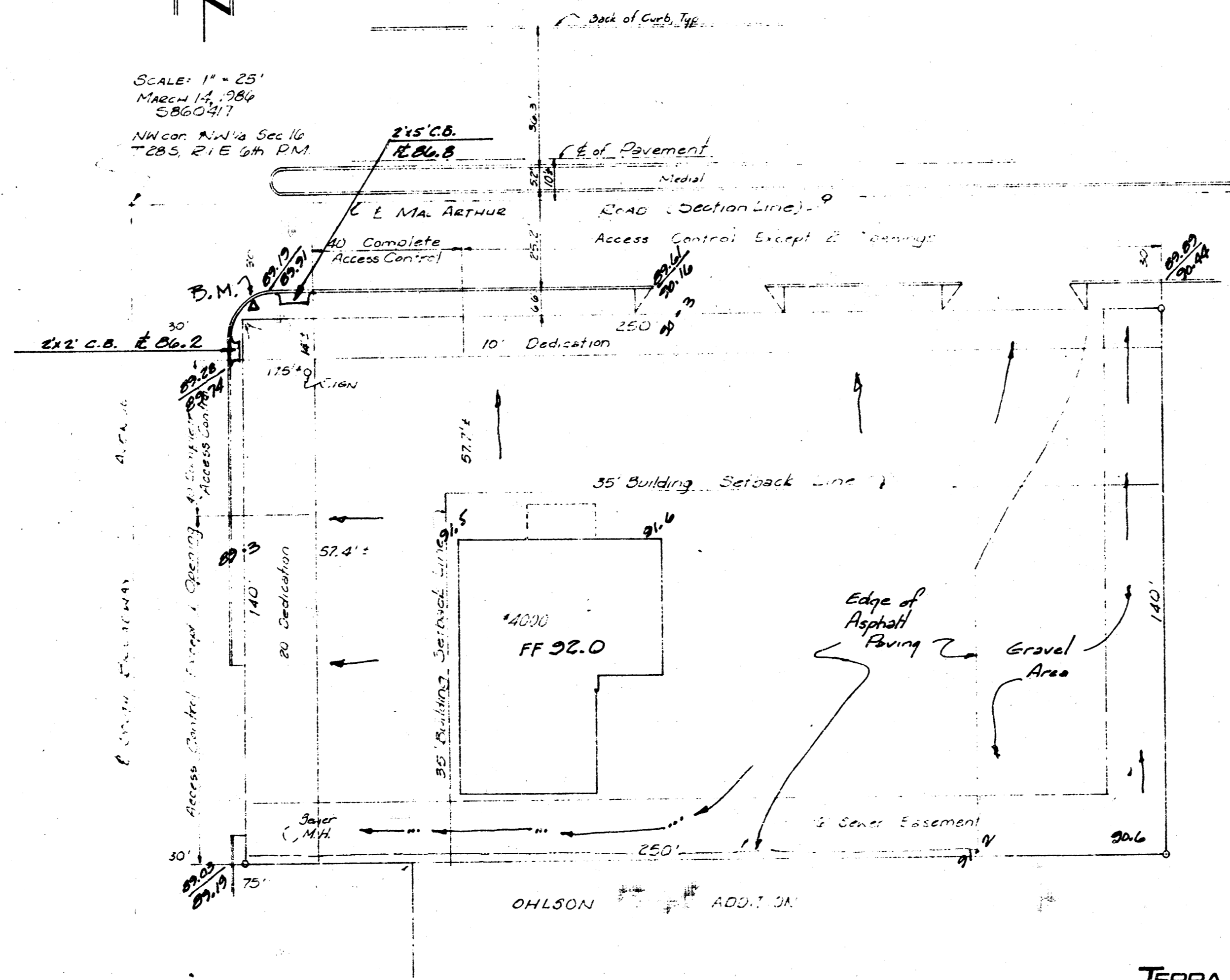
PLAN
DRAINAGE CONCEPT
HOMER MORGAN SECOND ADDITION

WICHITA, SEDGWICK COUNTY, KANSAS
Northwest Quarter Section 16, T28S, R1E, 6th. PM

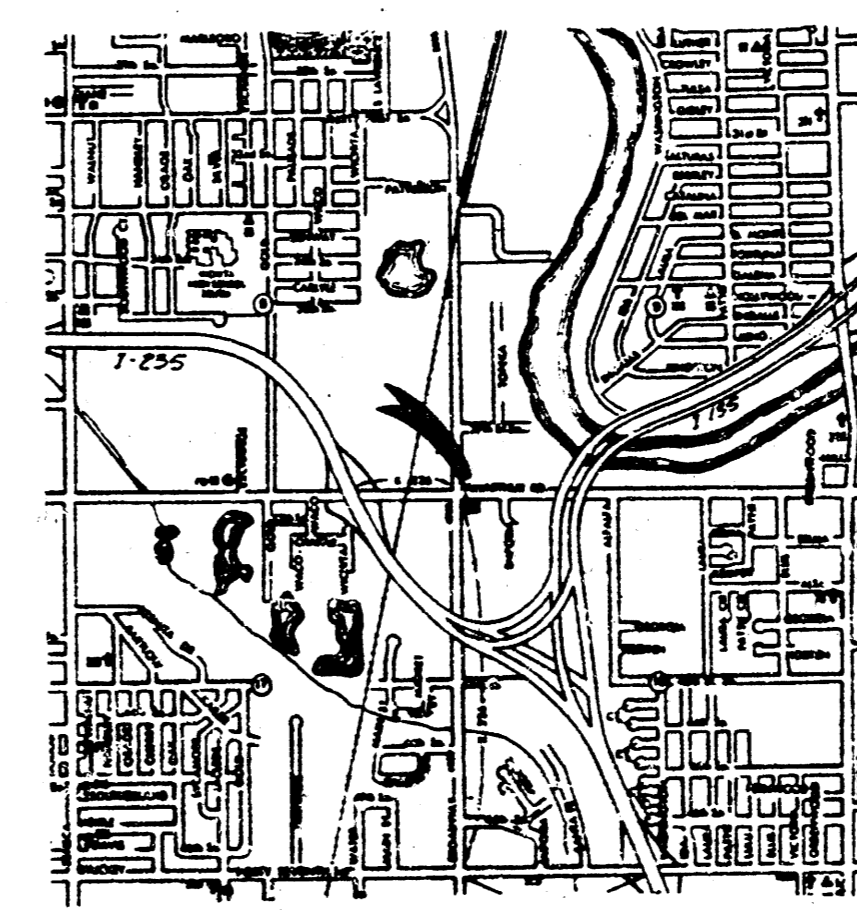
D.M. City 9th Disc 32'E 129'S NW 1/4 NW
Sec. 16, T28S, R1E @ Broadway
MacArthur Elev. 89.85 City Datum



SCALE: 1" = 25'
March 14, 1989
SBS/DMT
Wichita, Kansas Sec. 16
T28S, R1E 6th. PM



OWNER: OHLSON, HOMER MORGAN
310 INDUSTRIAL DR. WICHITA, KS 67202
DATE: 03/14/89



VICINITY MAP