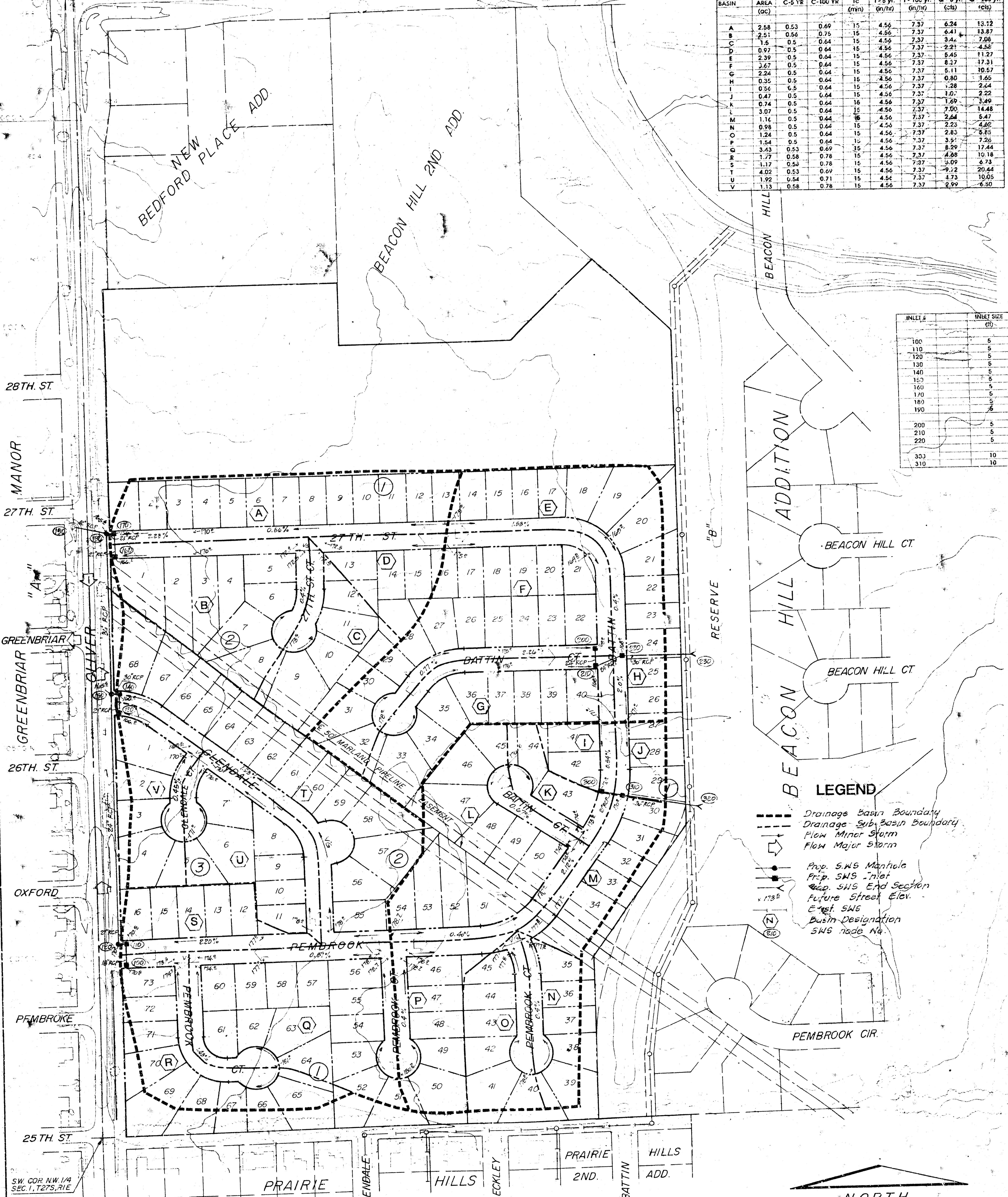


N.W. COR. NW 1/4
SEC. 1, T27S, R1E

29TH ST NORTH

BASIN	AREA (AC)	C-5 YR	C-100 YR	Tc (min)	1-5 yr (in/hr)	1-100 yr (in/hr)	Q-5 yr (cfs)	Q-100 yr (cfs)
A	2.58	0.53	0.69	15	4.56	7.37	6.24	13.12
B	2.51	0.56	0.75	15	4.56	7.37	6.41	13.87
C	1.5	0.5	0.64	15	4.56	7.37	3.42	7.08
D	0.97	0.5	0.64	15	4.56	7.37	2.21	4.57
E	2.39	0.5	0.64	15	4.56	7.37	5.45	11.27
F	2.67	0.5	0.64	15	4.56	7.37	5.11	10.57
G	2.24	0.5	0.64	15	4.56	7.37	0.80	1.69
H	0.35	0.5	0.64	15	4.56	7.37	1.28	2.64
I	0.56	0.5	0.64	15	4.56	7.37	1.07	2.22
J	0.47	0.5	0.64	15	4.56	7.37	1.69	3.49
K	0.74	0.5	0.64	15	4.56	7.37	7.00	14.48
L	3.07	0.5	0.64	15	4.56	7.37	2.23	4.62
M	1.16	0.5	0.64	15	4.56	7.37	2.83	5.85
N	0.98	0.5	0.64	15	4.56	7.37	3.51	7.26
O	1.24	0.5	0.64	15	4.56	7.37	8.29	17.44
P	1.54	0.5	0.64	15	4.56	7.37	4.38	9.18
Q	3.43	0.53	0.69	15	4.56	7.37	5.09	10.63
R	1.77	0.58	0.78	15	4.56	7.37	9.12	20.44
S	1.17	0.53	0.78	15	4.56	7.37	4.73	10.05
T	4.02	0.53	0.69	15	4.56	7.37	2.99	6.50
U	1.92	0.54	0.71	15	4.56	7.37		
V	1.13	0.58	0.78	15	4.56	7.37		

INLET	INLET SIZE (IN)
100	5
110	5
120	5
130	5
140	5
150	5
160	5
170	5
180	5
190	5
200	5
210	5
220	5
300	10
310	10



LEGEND

- Drainage Basin Boundary
- - - Drainage Sub-Basin Boundary
- Flow Minor Storm
- Flow Major Storm
- Prop. SWS Manhole
- Prop. SWS Inlet
- Prop. SWS End Section
- ▲ Future Street Elev.
- ▽ Elevation SWS
- Basin Designation
- SWS Node No.

NORTH
SCALE 1" = 100'
CONTOUR INTERVAL = 2'

- NOTES:
- BENCHMARK: CITY OF WICHITA DISC, 35' NORTH AND 33' EAST OF THE CENTERLINES OF 21ST ST NORTH AND OLIVER. ELEV. 159.65 CITY DATUM.
 - THIS PLAT IS PART OF BEACON HILL CUP DP-147.
 - DATE OF TOPO: 3-19-1985

DRAINAGE PLAN 8-30-93
PEMBROOK ADDITION

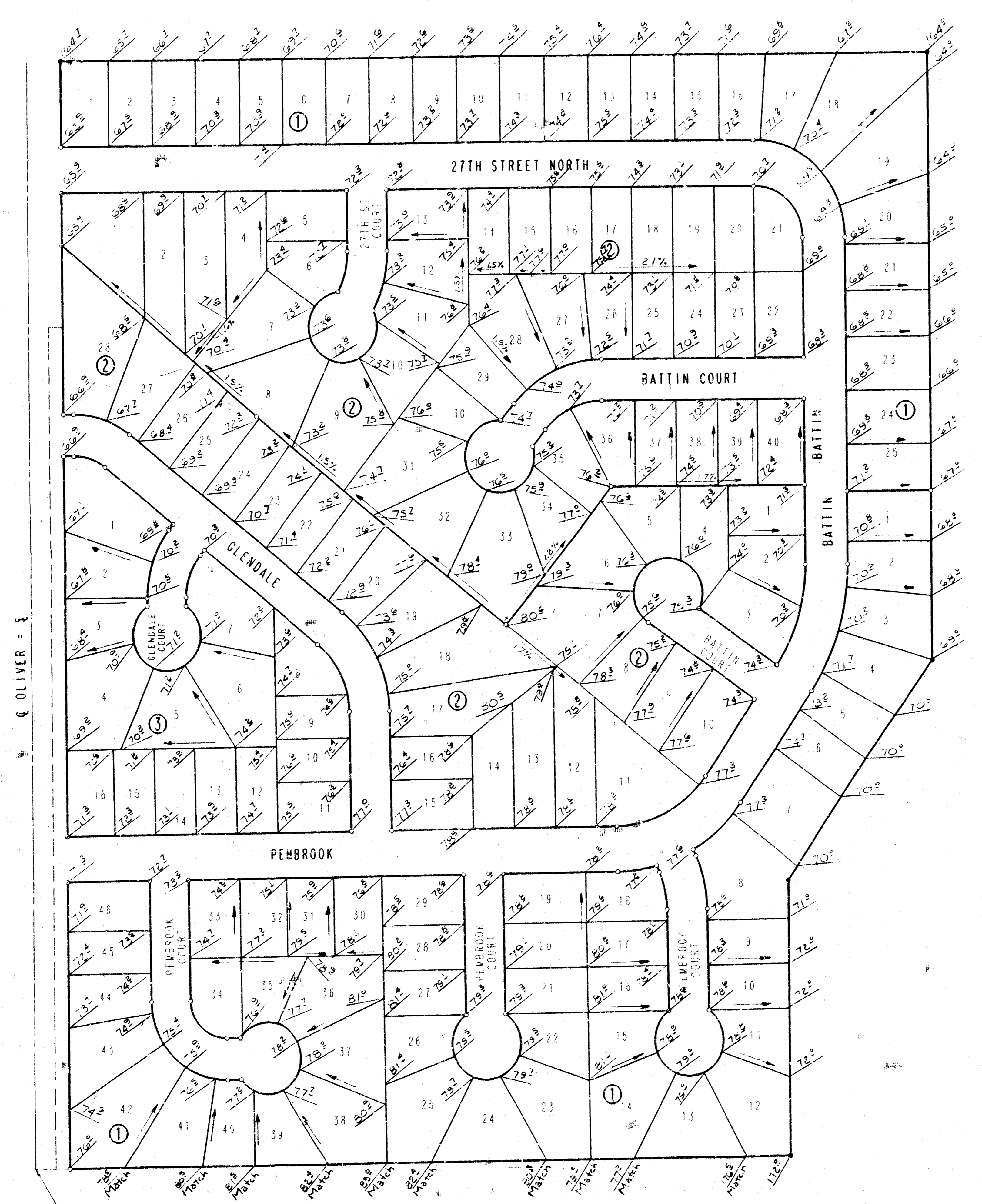
OWNER • CRITCHFIELD REAL ESTATE LIMITED PARTNERSHIP 1985
% SOCORA VILLAGE COMPANY, CONTRACT PURCHASER
% LARRY A. CHAMBERS, 104 S. BROADWAY, SUITE 200
WICHITA, KANSAS 67202-4165
ENGINEER • P.E.C., P.A., 303 S. TOPEKA, WICHITA, KS. 67202

Michael W. Perry
8-28-93

232

PEMBROOK

AN ADDITION, TO WICHITA, SEDGWICK COUNTY, KANSAS



S.W. CORNER, N.W. 1/4
SEC. 1, T22S, R1E
OF THE 6TH P.M.

SCALE: 1"=100'
 ○ = IRON SET
 * = IRON FOUND
 CALC. MEAS. = CALCULATED FROM MEASUREMENT
 MEAS. = MEASURED
 S.S. = SANITARY SEWER
 B.S.L. = BUILDING SETBACK LINE

B.M. DISC 29' NORTH AND 32' EAST OF
CENTERLINE OLIVER AND 29TH STREET
NORTH.
ELEV. -159.68 CITY DATUM
 B.M. RAILROAD SPIKE IN S.W. FACE OF
POWER POLE 26.5' NORTH OF 1/16
CORNER, 1/4 MILE EAST OF 29TH
STREET NORTH AND OLIVER.
ELEV. -161.18 CITY DATUM

MINIMUM PAD ELEVATION (LOWEST OPENING), AS
FOLLOWS:
 BLOCK 1
 LOT 1 ELEV. 167.00 CITY DATUM
 LOT 2 ELEV. 168.00 CITY DATUM
 LOTS 3 AND 4 ELEV. 169.00 CITY DATUM
 LOTS 5 THROUGH 7 ELEV. 170.00 CITY DATUM
 LOTS 8 AND 9 ELEV. 171.00 CITY DATUM
 LOTS 10 THROUGH 12 ELEV. 172.00 CITY DATUM

THIS ADDITION IS SUBJECT TO THE REQUIREMENTS
OF THE BEACON P.L.L. C.O.P. DP-147 ON FILE
WITH THE METROPOLITAN AREA PLANNING
DEPARTMENT.

Designates 2% or
greater slope, unless
otherwise noted.

**APPROVED
DRAINAGE PLAN**