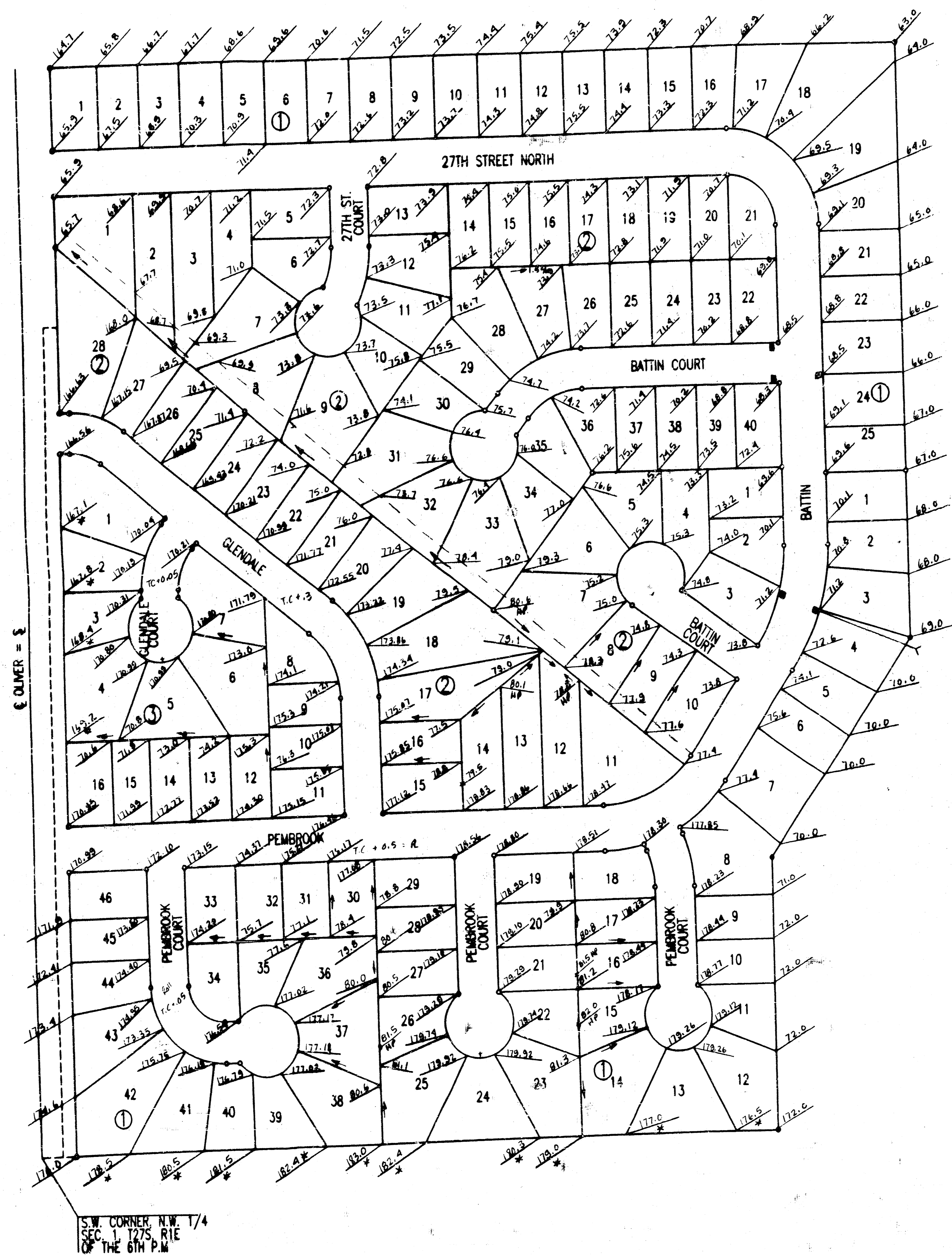


PEMBROOK

AN ADDITION, TO WICHITA, SEDGWICK COUNTY, KANSAS



S.W. CORNER N.W. 1/4
SEC. 1, T.25 N.12 E.
OF THE 6TH P.M.

SCALE: 1"=100'
 ○ = IRON SET
 ● = IRON FOUND
 CALC. MEAS. = CALCULATED FROM MEASUREMENT
 MEAS. = MEASURED
 S.S. = SANITARY SEWER
 B.S.L. = BUILDING SETBACK LINE

B.M. - DISC 29' NORTH AND 33' EAST OF CENTERLINE OLIVER AND 29TH STREET NORTH. ELEV.=159.68 CITY DATUM
 B.M. - RAILROAD SPIKE IN S.W. FACE OF POWER POLE 26.5' NORTH OF 1/16 CORNER, 1/4 MILE EAST OF 29TH STREET NORTH AND OLIVER. ELEV.=161.18 CITY DATUM

MINIMUM PAD ELEVATION (LOWEST OPENING) AS FOLLOWS:
 BLOCK 1
 LOT 1 ELEV. 167.00 CITY DATUM
 LOT 2 ELEV. 168.00 CITY DATUM
 LOTS 3 AND 4 ELEV. 169.00 CITY DATUM
 LOTS 5 THROUGH 7 ELEV. 170.00 CITY DATUM
 LOTS 8 AND 9 ELEV. 171.00 CITY DATUM
 LOTS 10 THROUGH 12 ELEV. 172.00 CITY DATUM

THIS ADDITION IS SUBJECT TO THE REQUIREMENTS OF THE BEACON HILL, C.U.P., DP-147 ON FILE WITH THE METROPOLITAN AREA PLANNING DEPARTMENT.

* Match Existing Elevation

Pembroke & Pembroke 2nd

APPROVED
MANAGE PLAN

Revised 7-27-98 KER