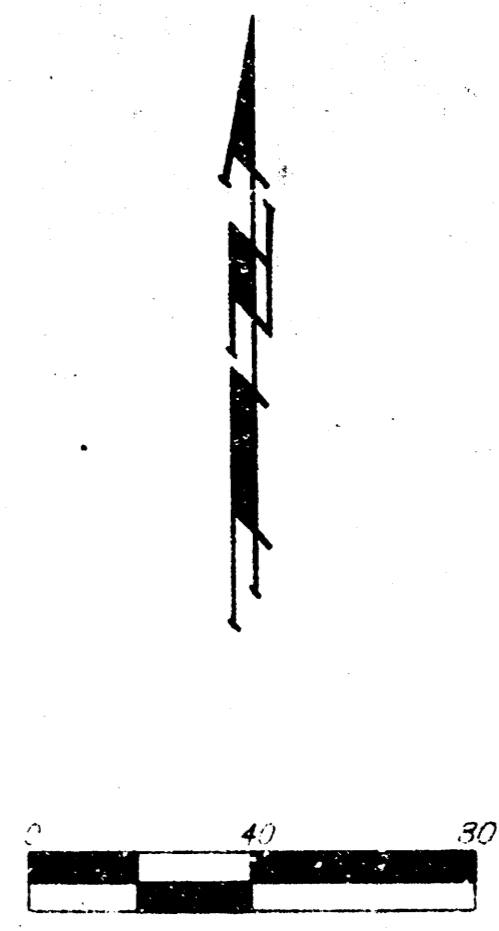
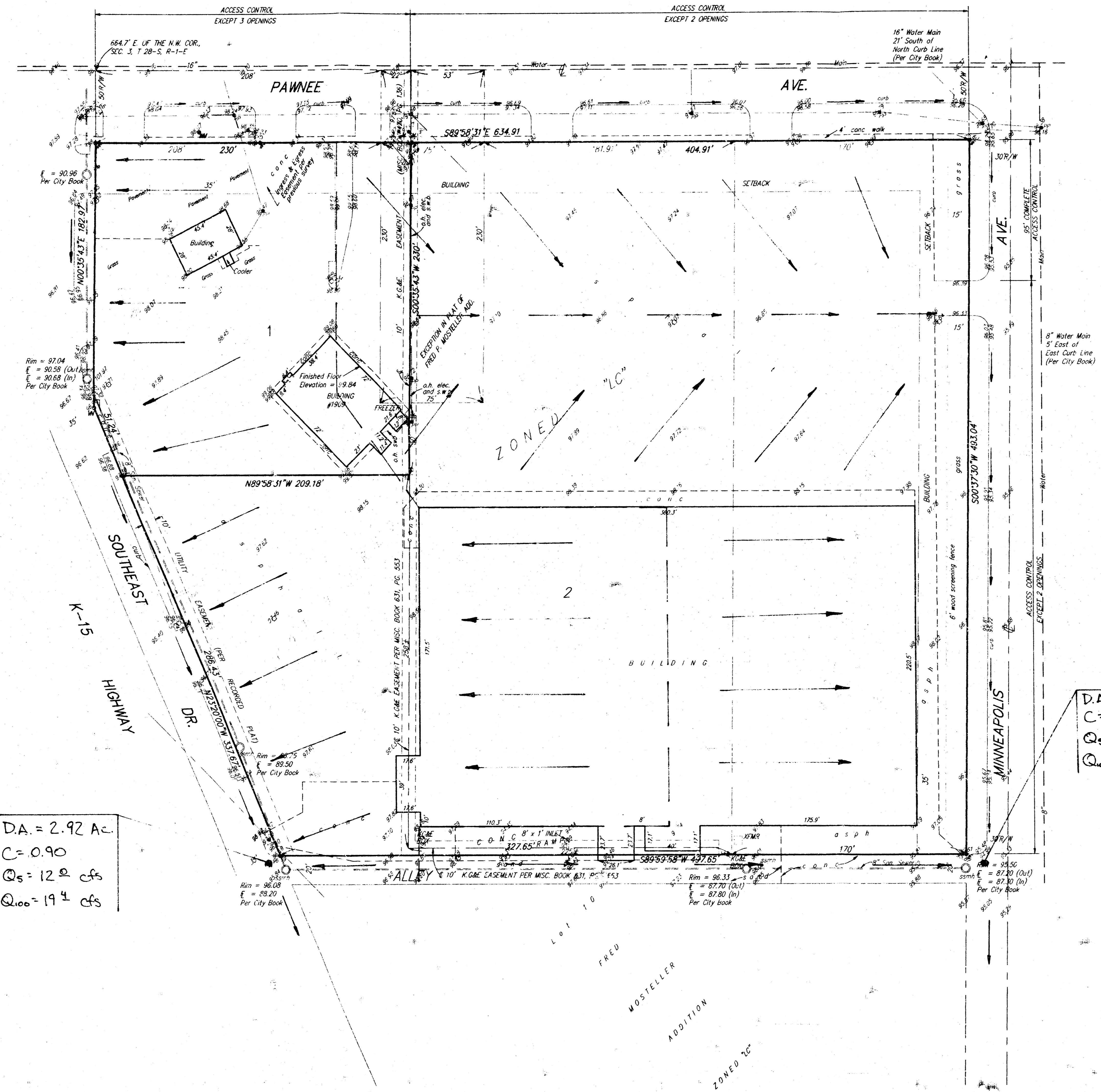


DRAINAGE PLAN

PRICE ADDITION

WICHITA, SEDGWICK COUNTY, KANSAS



Legend
 IF = Iron Found
 VN = V Notch
 WM = Water Meter
 GM = Gas Meter
 PP = Power Pole
 XFMR = Transformer
 ○ = Guy Wire
 ◊ = Light

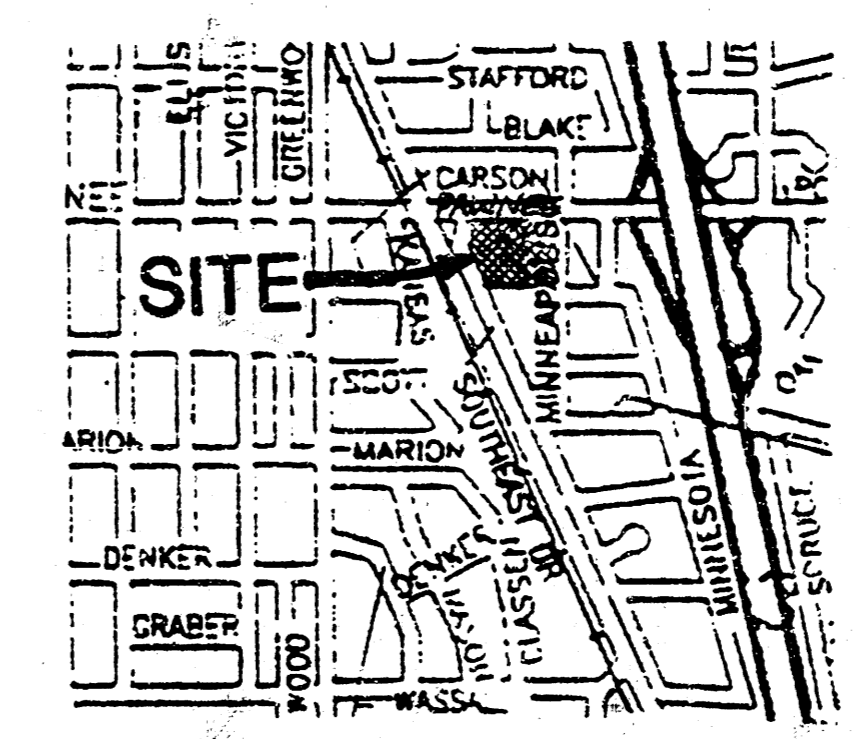
Bench Mark
 City of Wichita Disc 31.8' South of the
 Centerline of Pawnee & 33' West of West
 Rail of the Rail Road.
 Elevation = 100.45 (City Datum)

Legal
 A Replat of Lot 1, Mosteller Second Addition
 to Wichita, Sedgwick County, Kansas together with
 Lot 9, Fred F. Mosteller Addition to Wichita,
 Sedgwick County, Kansas together with
 the rectangular exception shown in the
 recorded plat of Fred P. Mosteller Addition
 to Wichita, Sedgwick County, Kansas, being
 75 feet in width and 230 feet in length.

Owner
 K-15 Shopping Center, Inc.
 Attn: Barry Price
 8857 W. 95th Street
 Overland Park, Ks 66212

D.A. = 2.92 Ac.
 C = 0.90
 Q_s = 12 cfs
 Q₁₀₀ = 19 cfs

D.A. = 4.12 Ac.
 C = 0.90
 Q_s = 16 cfs
 Q₁₀₀ = 27 cfs



VICINITY MAP