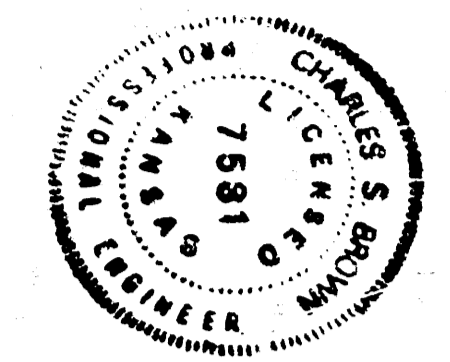


REF RIDGE ADD.
ZONED AA UNDER C.U.P.
UNDER C.U.P. DP-170

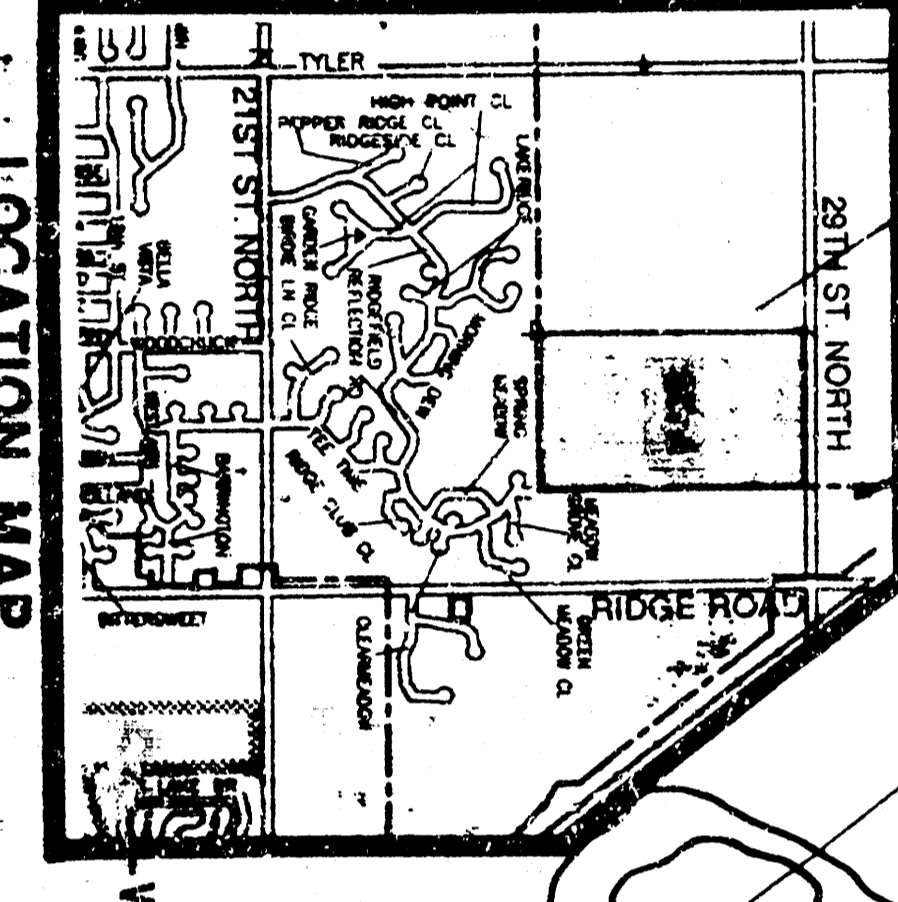
REFLECTION RIDGE
GOLF COURSE
ZONED AA UNDER
C.U.P. DP-170

REFLECTION RIDGE, INC.
ZONED AA UNDER C.U.P.
DP-170

REFLECTION RIDGE
ZONED AA UNDER
C.U.P. DP-170



- LEGEND**
- Drainage Direction - Minor Street
 - Drainage Direction - Major Storm
 - Drainage Basin Boundary
 - Drainage Sub-Basin Boundary
 - Proposed SWS and Inlet
 - Proposed SWS and Manhole
 - Identification Node Number
 - Final Plat Boundary
 - Future Street Elevation



NOTES:

- 1) BENCH MARK: CHISELED "A" N.E. COR. 377' RIB BRIDGE ON RIDGE ROAD 175' NORTH OF S.E. COR. N.E. 1/4 SEC. 4, 172'S, R1W ELEV.: 1325.84 M.S.L.
- 2) TOPOGRAPHY IS FROM AERIAL OBTAINED 15 DEC. 1990.
- 3) RESERVES "A" AND "B" ARE FOR LANDSCAPING, ENTRY MONUMENTS AND UTILITIES.
- 4) RESERVE "C" IS FOR LANDSCAPING, ENTRY MONUMENTS, UTILITIES, DRAINAGE, GOLF COURSE AND CART PATH AND PLAY EQUIPMENT.
- 5) RESERVE "D" IS FOR DRIVING RANGE WITH PARKING AND RELATED FACILITIES, LANDSCAPING, DRAINAGE AND ENTRY MONUMENTS.
- 6) RESERVES "E" THRU "H" ARE FOR LANDSCAPING AND UTILITIES.
- 7) RESERVES "I", "J" AND "K" ARE FOR LANDSCAPING, ENTRY MONUMENTS AND UTILITIES.

APPROVED
DRAINAGE PLAN

SCALE: 1" = 100'

DRAINAGE PLAN 8-9-91

REFLECTION RIDGE 7TH ADD.

OWNER: REFLECTION RIDGE INC., 7926 W. 21ST STREET, WICHITA, KANSAS, 67212 PH. (316) 721-2163

RITCHIE CORP.
ZONED E LIGHT IND.

GAIL L. WOODARD
ZONED R-1

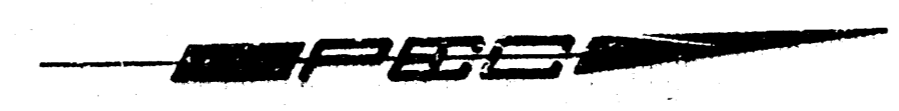
LAWRENCE & JUDITH WOODARD
ZONED R-1

N.W. CORNER N.E. 1/4
SEC. 172'S R1W

CENTER SEC. 4, 172'S R1W

LEO KASTENS
ZONED R-1

REFLECTION RIDGE 7TH ADDITION TO WICHITA, SEDGWICK COUNTY, KANSAS



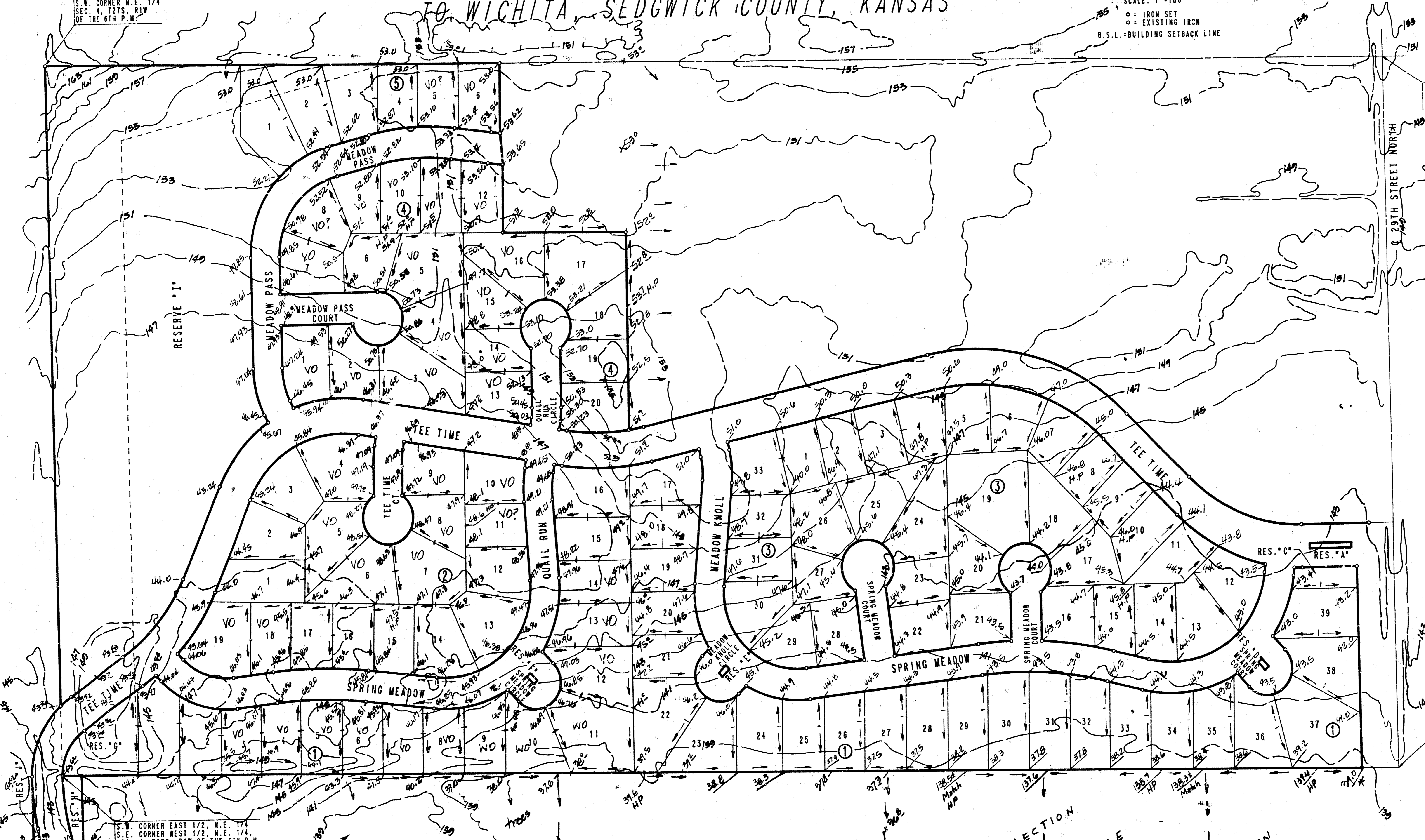
B.M. - CHISELED 7" x 1" N.E. CORNER 3-1' x 3' RC9
BRIDGE ON RIDGE ROAD 175 FEET NORTH
OF S.E. CORNER N.E. 1/4, T27S, R1W
ELEV. = 1325.64 M.S.L.
ELEV. = CITY DATUM 138.46

SCALE: 1" = 100'
 ○ = IRON SET
 ○ = EXISTING IRON
 B.S.L. = BUILDING SETBACK LINE

S.W. CORNER N.E. 1/4
SEC. 4, T27S, R1W
OF THE 6TH P.M.

W.W. CORNER N.E. 1/4
SEC. 4, T27S, R1W
OF THE 6TH P.M.

N.E. CORNER WEST 1/2, N.E. 1/4
SEC. 4, T27S, R1W OF THE 6TH P.M.



GENERAL NOTES
 Contours based on Aerial Photography
 by Miles Aerial Survey Dated Dec. 1990
 * - Match
 80.0' - Prop. Grade (City Datum Elev.)
 - - - Drainage Direction

**APPROVED
 DRAINAGE PLAN**

DETAILED DRAINAGE PLAN

Revised 11/18/91