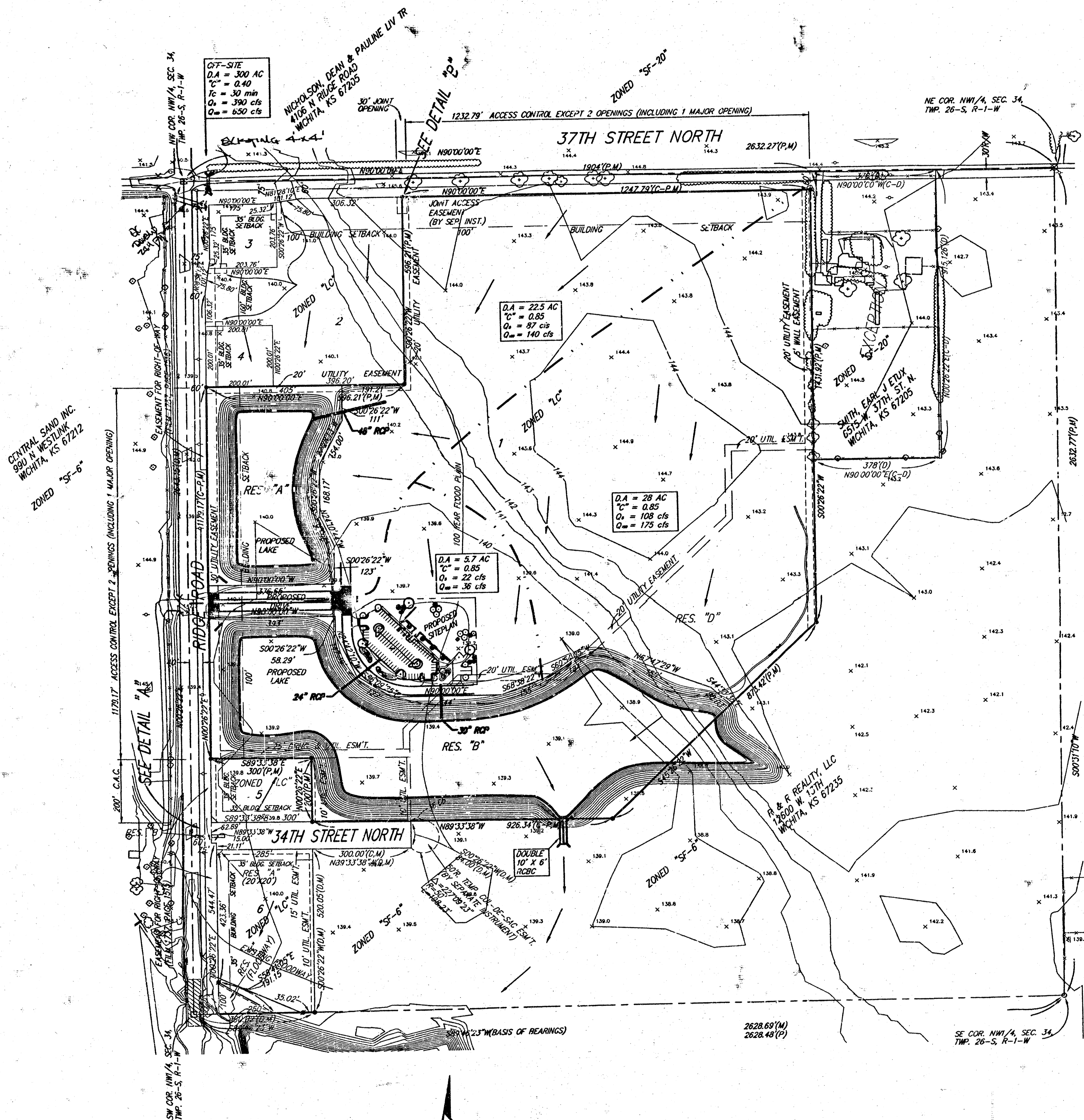


DRAINAGE PLAN

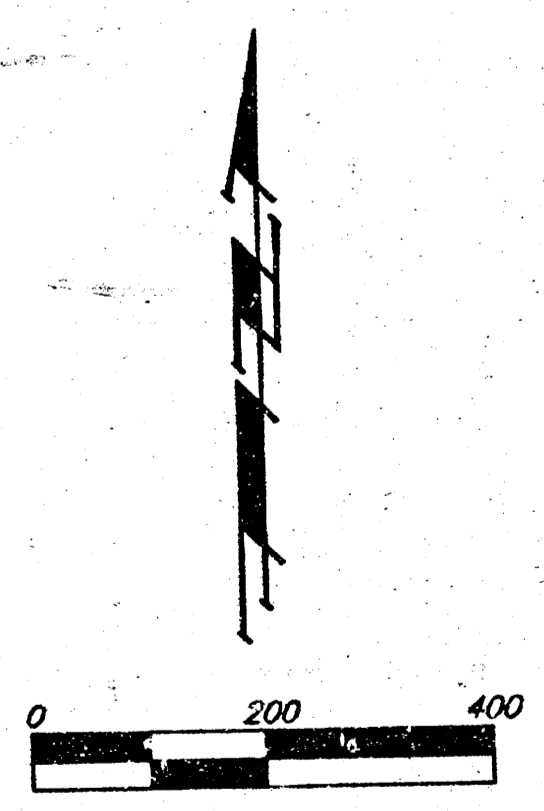
RIDGE PORT NORTH 2ND ADDITION

WICHITA, SEDGWICK COUNTY, KANSAS



MINIMUM BUILDING FLOOR ELEVATION FOR LOWEST OPENING TO THE STRUCTURES	
LOT	ELEVATION (CITY DATUM)
1	144.6

BENCHMARK:
 CITY DISK - SW COR. RIDGE RD. & 29TH ST. NO.
 80.0' S & 63.7' W OF E BIRTH
 ELEV. = 139.15 CITY DATUM (1326.55 M.S.L.)



- (M) = MEASURED
- (P) = PLATTED
- (C-P) = CALCULATED PER PLATTED INFO.
- = #4 REBAR W/ "BAUGHMAN" CAP (FOUND)
- = #4 REBAR W/ "BAUGHMAN" CAP (SET)
- = 3/8" IRON (FOUND)
- = RAILROAD STRIP (FOUND)
- ⊗ = NAIL IN 1/2" IRON (FOUND)

NOTE:
 ADDITIONAL BUILDING SETBACK REQUIREMENTS
 PER COMMUNITY UNIT PLAN DP-237.

Aug 24, 1999

BAUGHMAN COMPANY P. A.
 ENGINEERING, SURVEYING, & PLANNING
 516-265-7971 • 316 ELLIS • WICHITA, KANSAS 67211
P:\MIND\DRIP\DRIP\DWG-DRIP-00