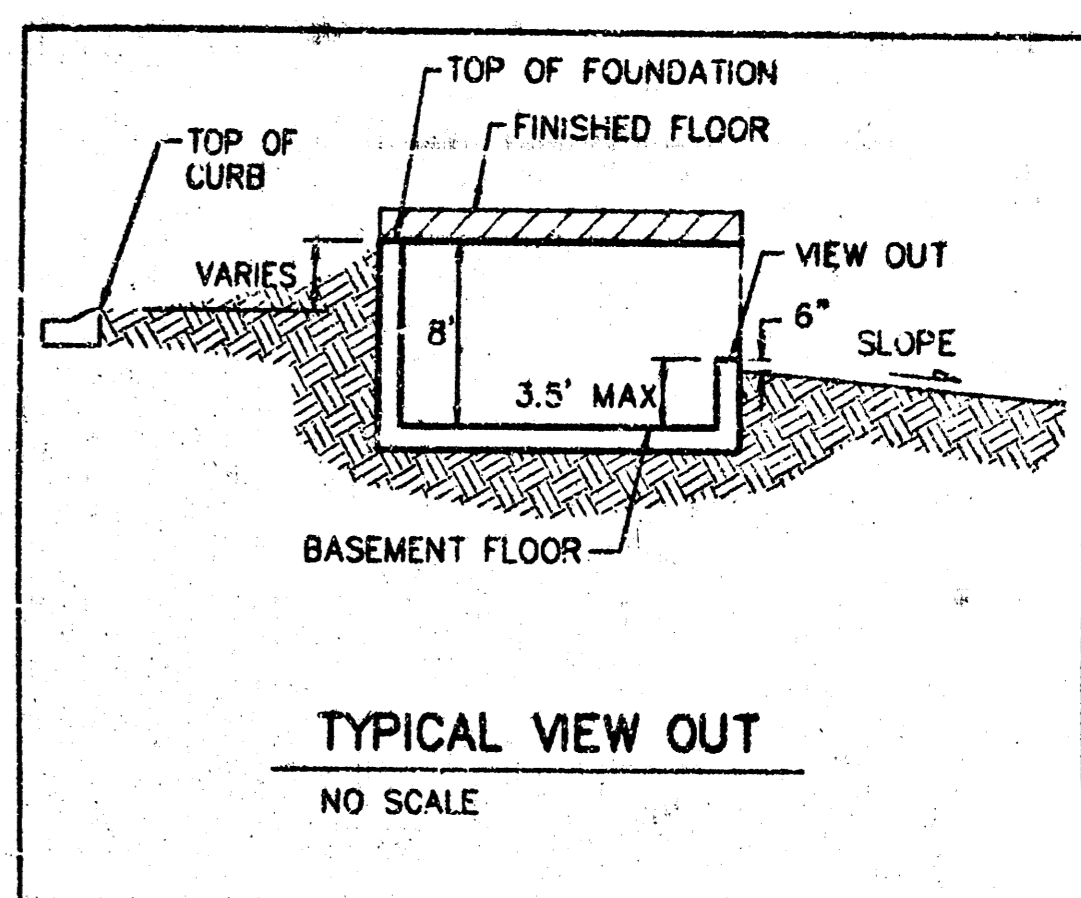


SCALE: 1" = 60'  
 • = Iron



**NOTE:**  
 Proposed top of foundation elevations are shown on plans. Contractor to set finish floor elevation.  
 All street elevations shown on plans are for top of curb (full height).  
 View-out elevations are denoted as XX.X V.O.  
 Additional fill or deep footings may be required for pad elevations denoted with an asterisk (\*)

**BENCHMARK:**  
 City Disc at the SW Corner of R.C.B.C. for Big Stough AP  
 Ridge Road  
 Elev. = 144.22 City Datum (1331.62 NGVD)

**APPROVED DRAINAGE PLAN**

**NOTE:**  
 A master grading plan for drainage has been developed for this subdivision and is on file with the City of Wichita, Kansas. All drainage easements, rights-of-way, or reserves shall remain at established grades or as modified with the approval of the city engineer of the City of Wichita, Kansas. No obstructions which impede the flow of this drainage system shall be allowed.

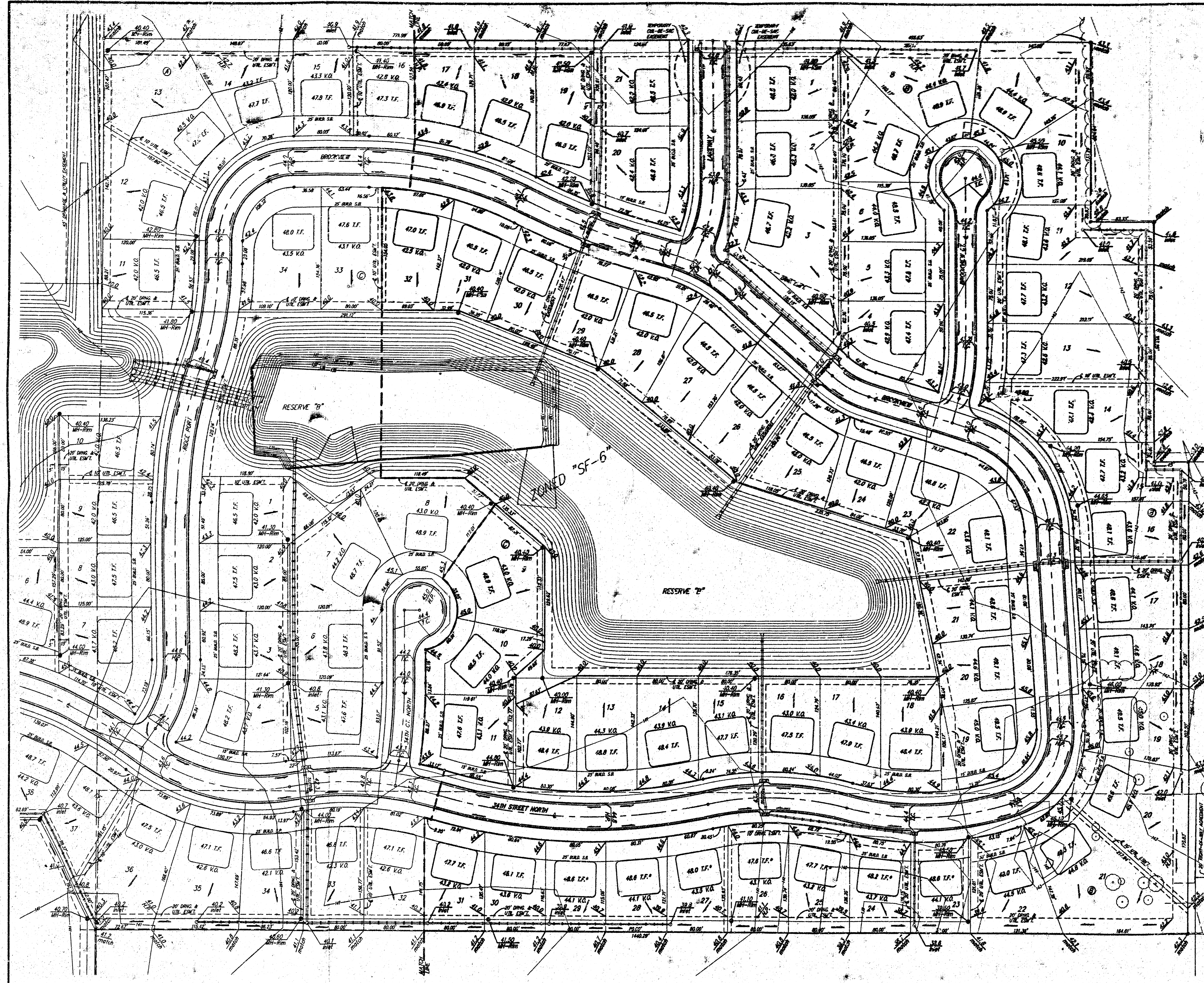
**RIDGE PORT NORTH 4TH ADDITION GRADING PLAN**  
 WICHITA, KANSAS

**BAUGHMAN COMPANY P.A.**  
 ENGINEERING, SURVEYING, & PLANNING  
 316-262-7277 • 315 ELLIS • WICHITA, KANSAS 67211

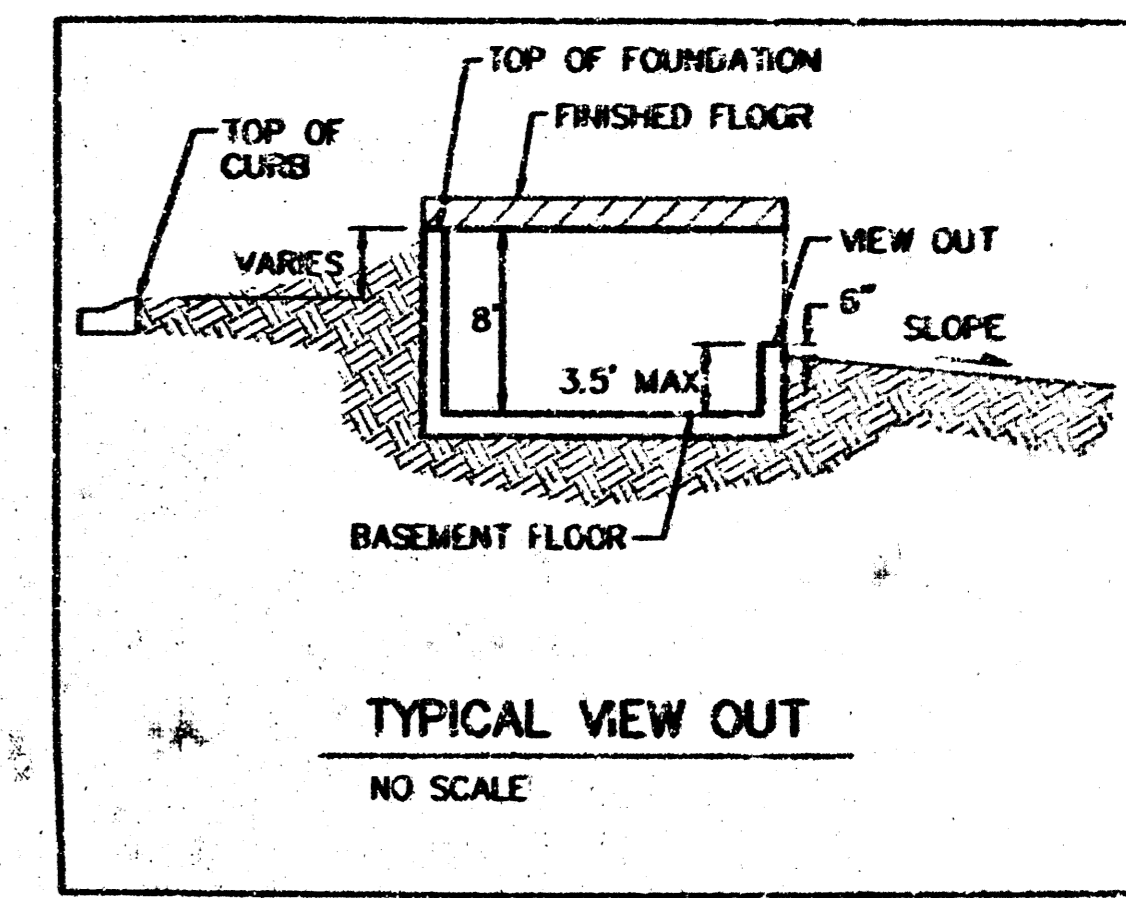
DESIGN	DRAWN	APPROVED	DATE	SCALE	SHEET
	ELC		3/12/2007	NOTED	1 OF 3

PROJECT NUMBER: \_\_\_\_\_

NEW DRAINAGE RULES!



SCALE: 1" = 60'  
 • = 100'



**NOTE:**  
 Proposed top of foundation elevations are shown on plans. Contractor to set finish floor elevation.  
 All street elevations shown on plans are for top of curb (full height).  
 View-out elevations are denoted as XXX V.O.  
 Additional fill or deep footings may be required for pad elevations denoted with an asterisk (\*)

**REMARKS:**  
 City Use at the SW Corner of R.C.B.C. for Big Slough Air Ridge Road  
 Dec = 144.27 City Datum (1331.62 NGVD)

**NOTE:**  
 A master grading plan for drainage has been developed for this subdivision and is on file with the City of Wichita, Kansas. All drainage easements, rights-of-way, or reserves shall remain at established grades or as modified with the approval of the city engineer of the City of Wichita, Kansas. No obstructions which impede the flow of this drainage system shall be allowed.

**FRIDGE PORT NORTH 4TH ADDITION GRADING PLAN**  
 WICHITA, KANSAS

**BAUGHMAN COMPANY P.A.**  
 ENGINEERING, SURVEYING, & PLANNING  
 318-282-2271 • 318 ELLIOTT • WICHITA, KANSAS 67211

PROJECT NUMBER: \_\_\_\_\_ SHEET: **2** OF **8**

DESIGN	DRAWN	APPROVED	DATE	SCALE
	BLG		3/12/2001	NOTED

L:\PROJECTS\147\GRADING