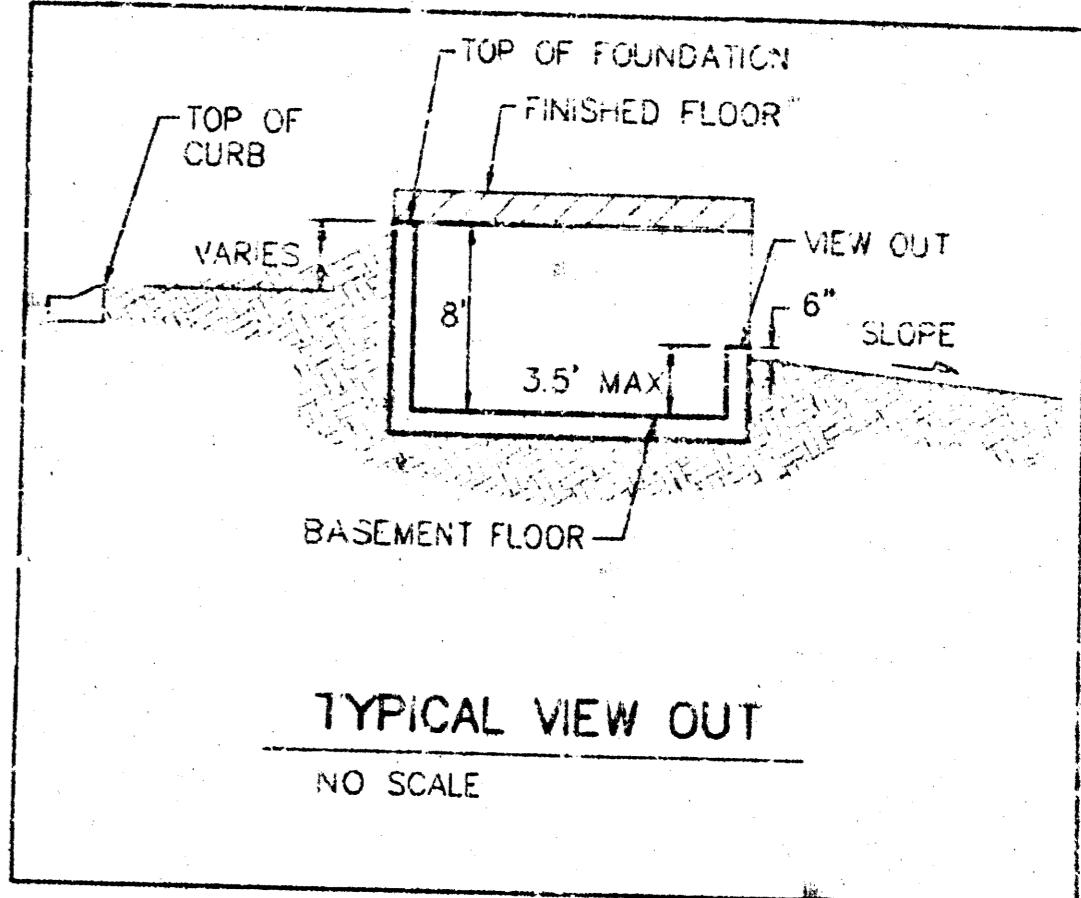
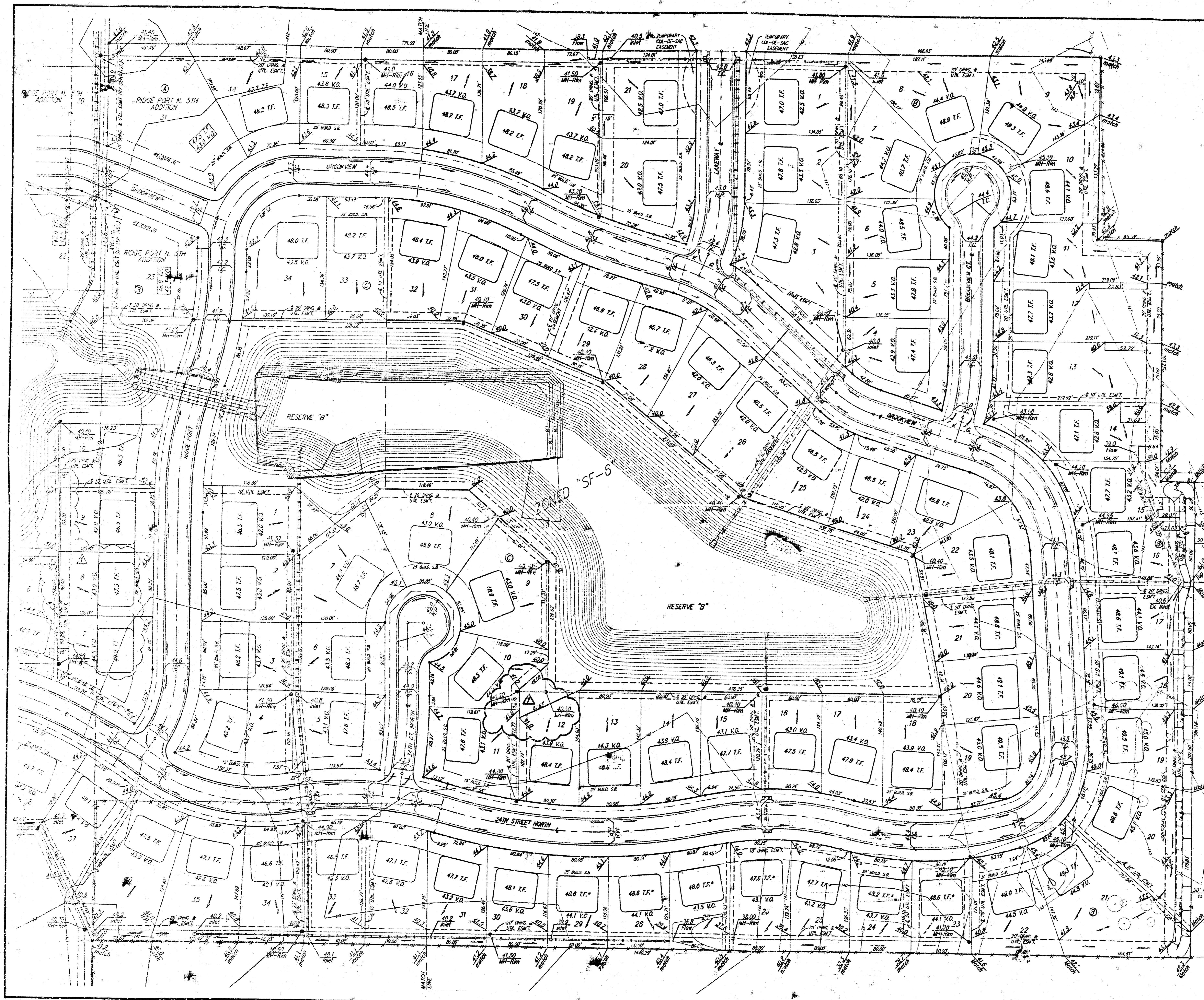


SCALE: 1" = 50'
 - - - - - Iron

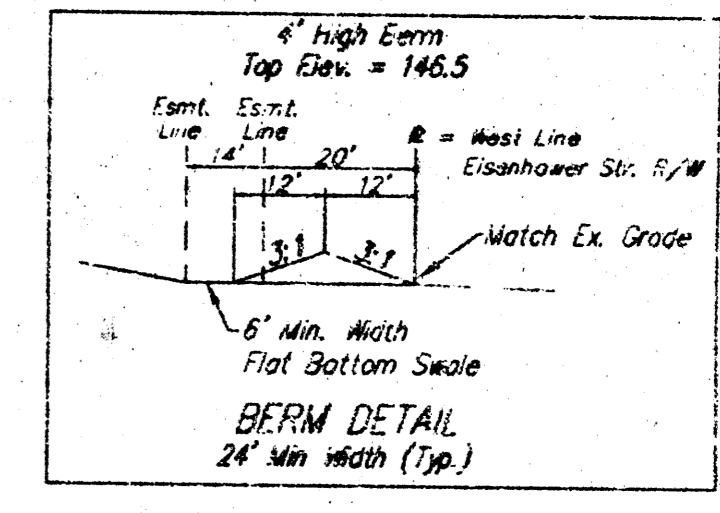


NOTE:
 Proposed top of foundation elevations are shown on plans. Contractor to set finish floor elevation.
 All street elevations shown on plans are for top of curb (full height).
 View-out elevations are denoted as XX.X V.O.
 Additional fill or jump footings may be required for pad elevations denoted with an asterisk (*).

</



SCALE: 1" = 60'
 • = Iron



- ▲ REVISED 11/25/02 by AEG - burn and grades along out line and Ripplet of Lova to Ridge Port N. 5th
- ▲ REVISED 7/24/02 by AEG per NEM - top of foundations
- ▲ REVISED 6/10/02 by GGT per NEM - grades and SMS alignment
- ▲ REVISED 4/5/02 by AEG per NEM

**RIDGE PORT NORTH 4TH ADDITION
 GRADING PLAN**
 WICHITA, KANSAS

BAUGHMAN COMPANY P.A.
 ENGINEERING, SURVEYING, & PLANNING
 316-262-7271 • 315 ELLIS • WICHITA, KANSAS 67211

DESIGN	DRAWN	APPROVED	DATE	SCALE	SHEET
	BLC		3/12/2001	NOTED	29