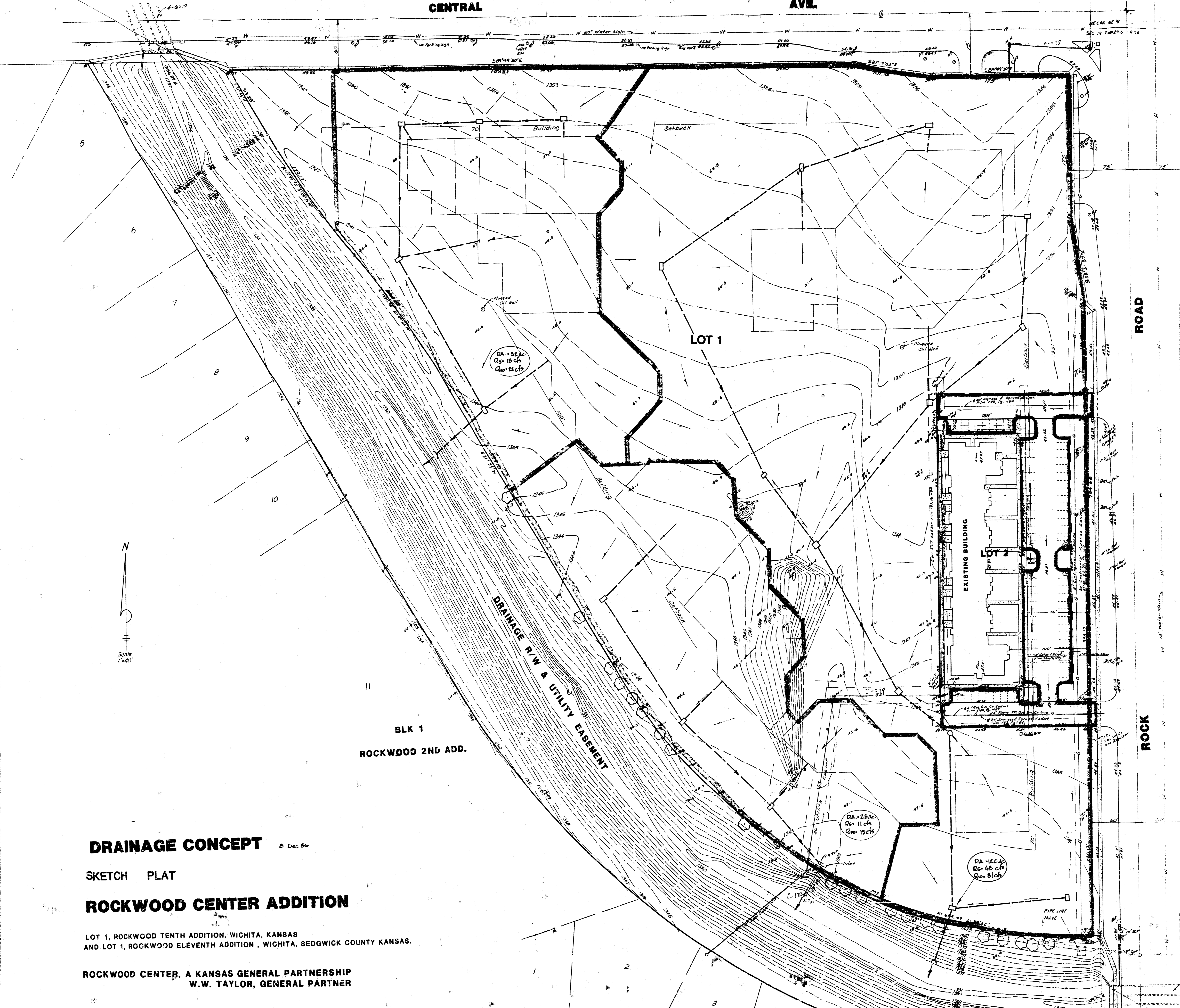


STANDARD DISK ON
BEHIND OF CENTRAL
ELEV. 1347.33



DEAN-RUPERT FIRST ADD.

DEAN-RUPERT SECOND ADD.

DRAINAGE CONCEPT

5 Dec 86

SKETCH PLAT

ROCKWOOD CENTER ADDITION

LOT 1, ROCKWOOD TENTH ADDITION, WICHITA, KANSAS
AND LOT 1, ROCKWOOD ELEVENTH ADDITION, WICHITA, SEDGWICK COUNTY KANSAS.

ROCKWOOD CENTER, A KANSAS GENERAL PARTNERSHIP
W.W. TAYLOR, GENERAL PARTNER

GENWOOD DEVELOPMENT COMPANY, INC
W.W. TAYLOR, PRESIDENT