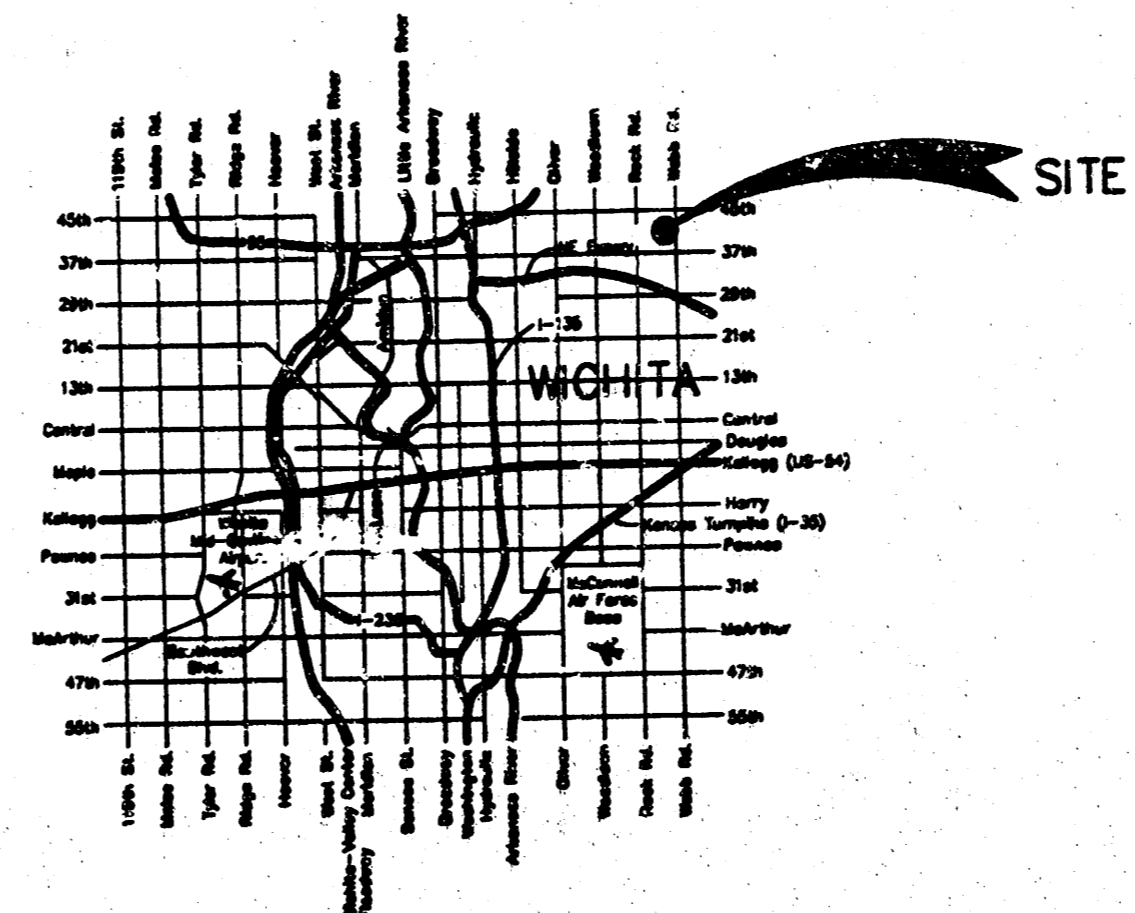


# SAND PLUM ADDITION DRAINAGE PLAN WICHITA, SEDGWICK COUNTY, KANSAS

Area #	Area (Ac)	Undeveloped				Developed			
		S	SW	SE	NE	S	SW	SE	NE
1	5.28	4.58	7.37	8.4	18.8	8.4	18.8		
2	4.32	4.58	7.37	8.4	18.8	8.4	18.8		
TOTAL	9.60								

NOTES:  
 1. Determination of O's was made using the rational method.  
 2. O's used were as follows:  
 For Impervious .25  
 For Permeable .15



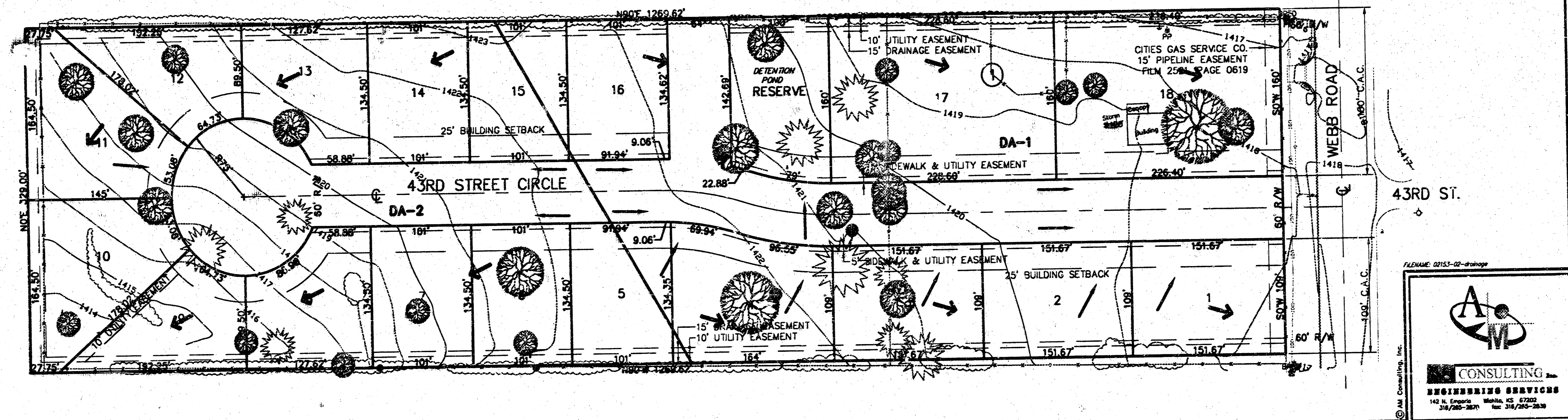
VICINITY MAP

BENCHMARK  
 "1" out on top NE cor. of  
 1st East side of Rock Rd.  
 80' North of Central Ave.  
 Elev. 166.50 (City Datum)

SCALE  
 50 0 50 100

**LEGEND**

- ▲ = Section Corner
- = 5/8" Rebar (found)
- BPED = Bell Pedestal
- ☼ = Cedar
- 1298 = Contour Elevation
- ⊕ = Fire Hydrant
- = Fence
- GAS — = Gas
- ⊥ = Guy Anchor
- MB = Mailbox
- ⊕ = Power Pole
- = Sign
- ☼ = Tree
- ◆ BENCHMARK  
 Benchmark description  
 Elev.



FILE NAME: 0153-02-Drainage

**CONSULTING  
 ENGINEERING SERVICES**  
 142 N. Emporia, Wichita, KS 67202  
 316/261-2611 Fax 316/261-2618