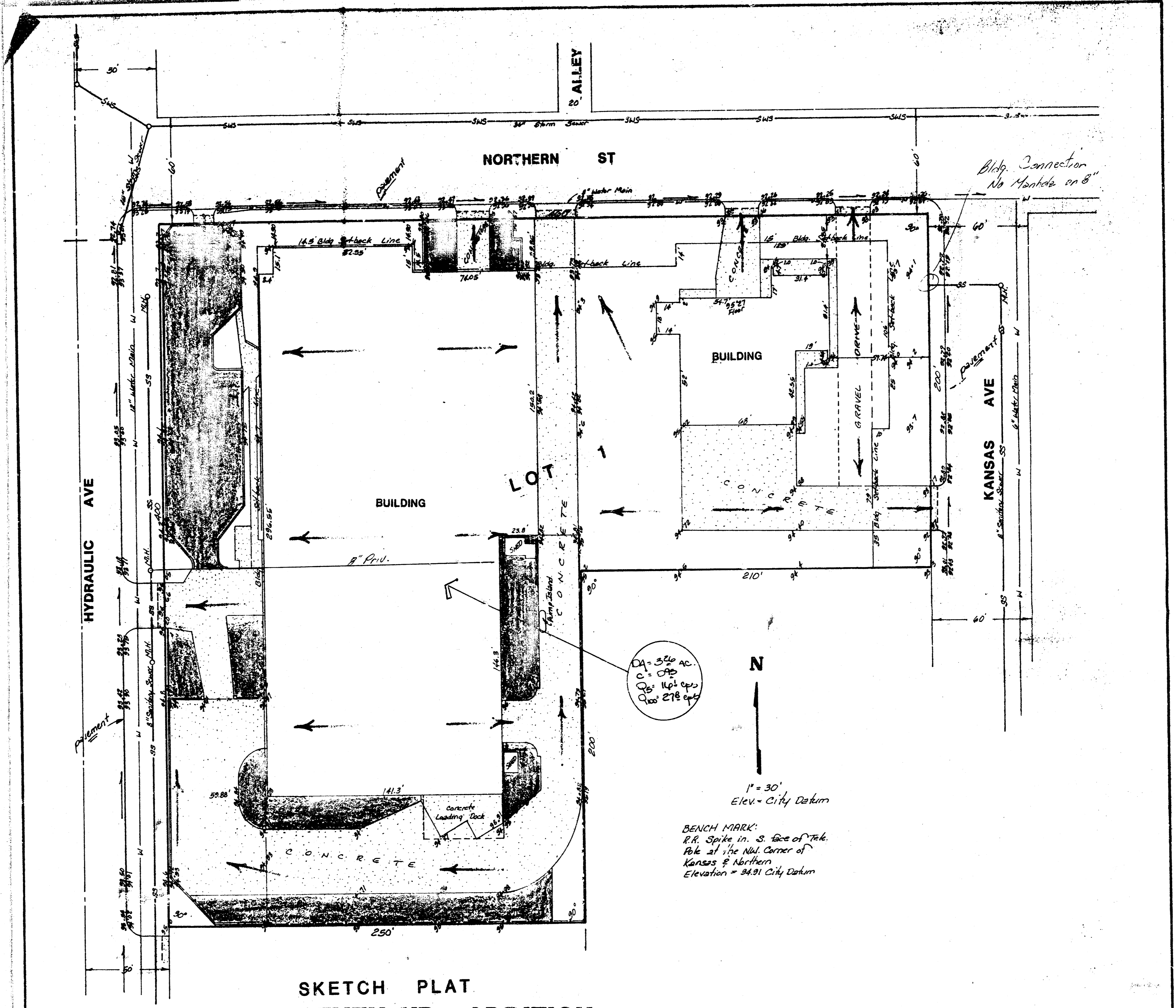


SEVEN-UP ADDITION  
(Drainage)



SKETCH PLAT  
**SEVEN-UP ADDITION**

LOT 1 AND THE N1/2 OF LOT 2,  
BLOCK B, INDUSTRIAL ADDITION

SEVEN-UP WICHITA BOTTLING CO., INC.  
SCOTT T. CULBERTSON, PRESIDENT

**DRAINAGE PLAN**

GENERAL NOTE:  
The industrial developed lot (3.26 acres) will drain as it does presently to the streets around the lot thru 7 driveways. Storm sewer inlet is presently discharging hydraulic at the intersection as indicated on the topography.

**BAUGHMAN COMPANY, P.A.**  
SURVEYING & ENGINEERING  
316-282-7271 • 330 LAURA • WICHITA, KANSAS 67211

12 SEP 85