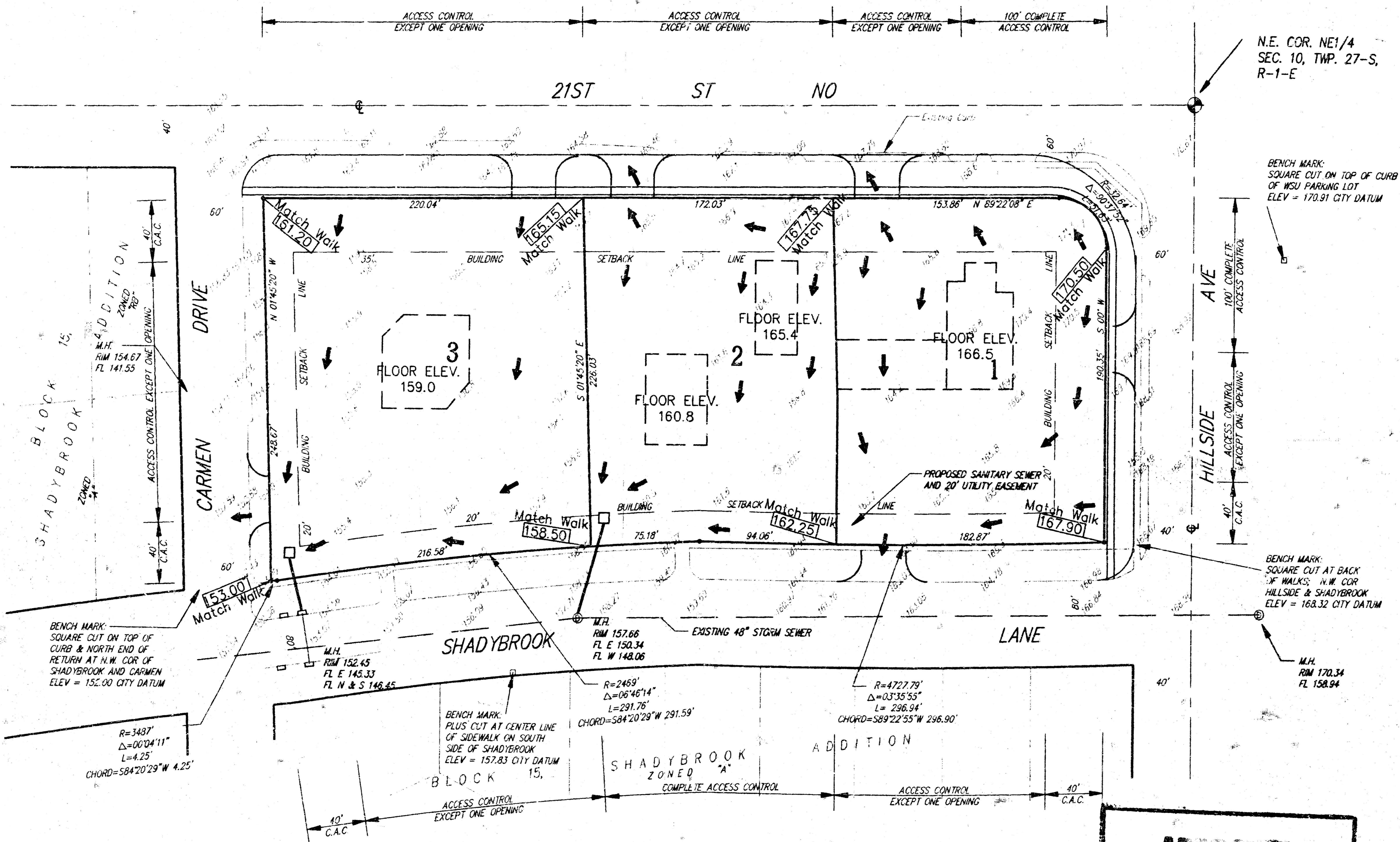


1" = 50'
ELEV = CITY DATUM



N.E. COR. NE1/4
SEC. 10, TWP. 27-S,
R-1-E

BENCH MARK:
SQUARE CUT ON TOP OF CURB
OF WSU PARKING LOT
ELEV = 170.91 CITY DATUM

BENCH MARK:
SQUARE CUT AT BACK
OF WALKS; N.W. COR
HILLSIDE & SHADYBROOK
ELEV = 168.32 CITY DATUM

BENCH MARK:
SQUARE CUT ON TOP OF
CURB & NORTH END OF
RETURN AT N.W. COR OF
SHADYBROOK AND CARMEN
ELEV = 152.00 CITY DATUM

BENCH MARK:
PLUS CUT AT CENTER LINE
OF SIDEWALK ON SOUTH
SIDE OF SHADYBROOK
ELEV = 157.83 CITY DATUM

**APPROVED
DRAINAGE PLAN**

LOT GRADING PLAN
**SHADYBROOK COMMERCIAL
ADDITION**

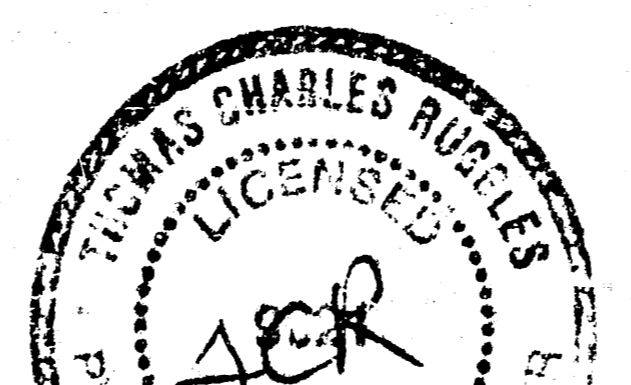
WICHITA, SEDGWICK COUNTY, KANSAS

LEGEND

- xxx.xx Finished Spot Elevation
- Existing Spot Elevation

NOTE

1. Site plans for each lot to be submitted with building plans shall include detailed grading information.
2. Any variations from the finished grades indicated shall be approved by Savoy, Ruggles & Bohm, P.A.



SRB 841 SOUTH HILLSIDE 316-652-7754
WICHITA, KANSAS 67211 FAX 652-7932
SAVOY RUGGLES & BOHM, P.A.