

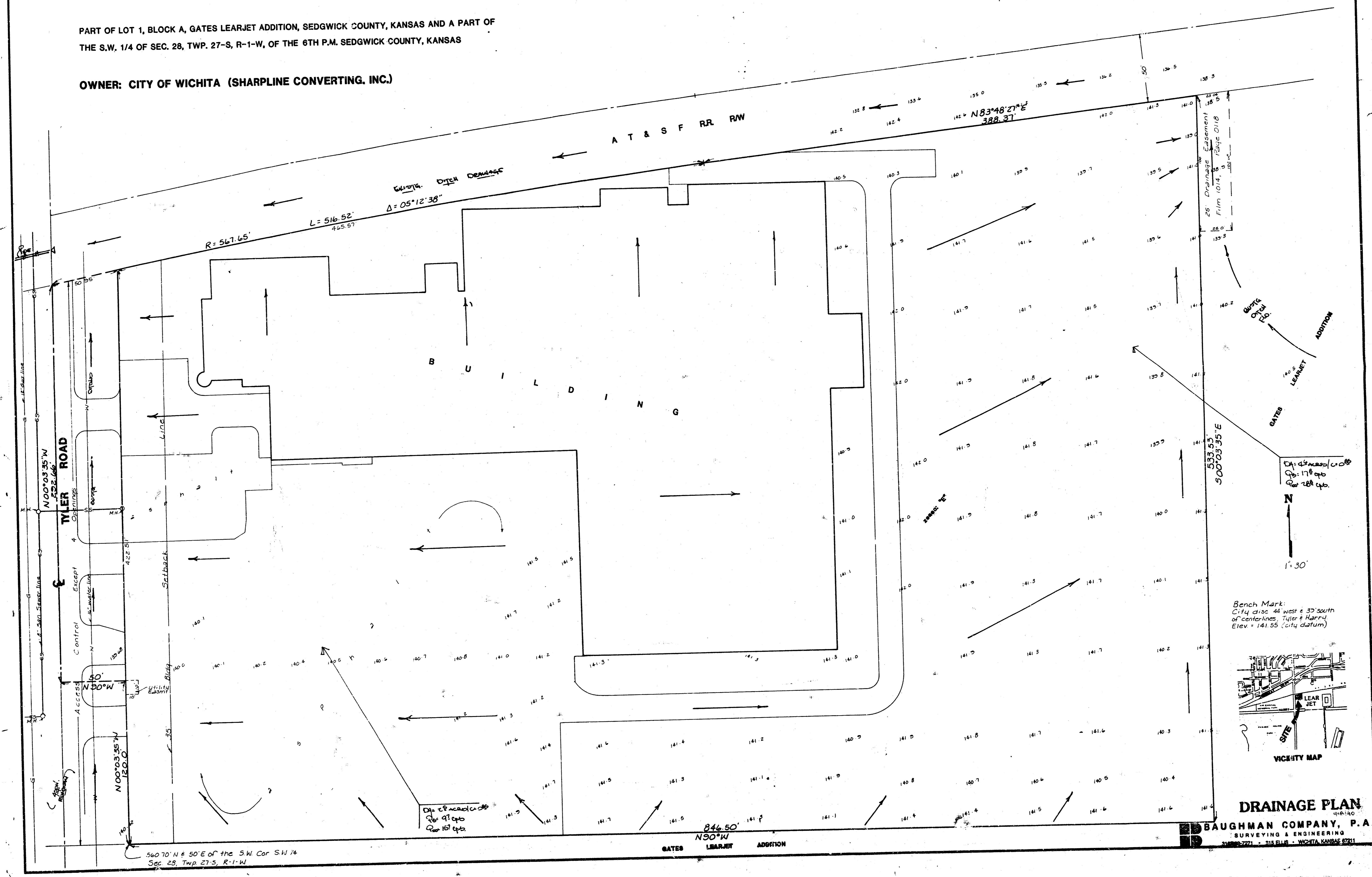
Sharpline Add'n

SKETCH PLAT

SHARPLINE FIRST ADDITION

PART OF LOT 1, BLOCK A, GATES LEARJET ADDITION, SEDGWICK COUNTY, KANSAS AND A PART OF THE S.W. 1/4 OF SEC. 28, TWP. 27-S, R-1-W, OF THE 6TH P.M. SEDGWICK COUNTY, KANSAS

OWNER: CITY OF WICHITA (SHARPLINE CONVERTING, INC.)



560.70' N & 50' E of the SW Cor SW 1/4 Sec. 28, Twp. 27-S, R-1-W

846.50' N30°W

533.53' S00°03'35"E