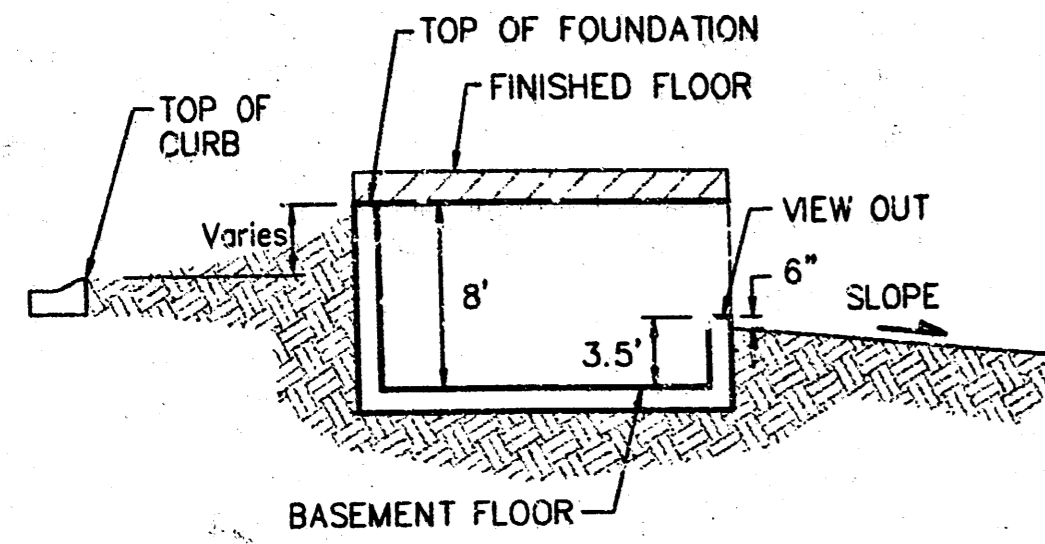


BENCHMARK:

"Q" Cut on Top of Curb, North Side Streets, NW of Center Line of Streets Ct., Shadybrook Meadow Addition.
Elev. = 135.19 City Datum
(132.59 NGVD)



TYPICAL VIEW OUT
NO SCALE

MINIMUM BUILDING PAD ELEVATION FOR LOWEST OPENING TO THE STRUCTURES			
BLOCK	LOT(S)	CITY DATUM	MS
D	1-6	141.6	1329.0

NOTES:

A master grading plan for drainage has been developed for the subdivision and is on file with the City of Wichita, Kansas. Construction of residential structures must follow the master site grading plan elevations which are higher than the minimum pad requirement.

All drainage easements, rights-of-way, or reserves shall remain at established grades or as modified with the approval of the City Engineer of the City of Wichita, Kansas. No obstructions which impede the flow of this drainage system shall be allowed.

Proposed top of foundation elevations are shown on plans. Contractor to set finished floor elevations.

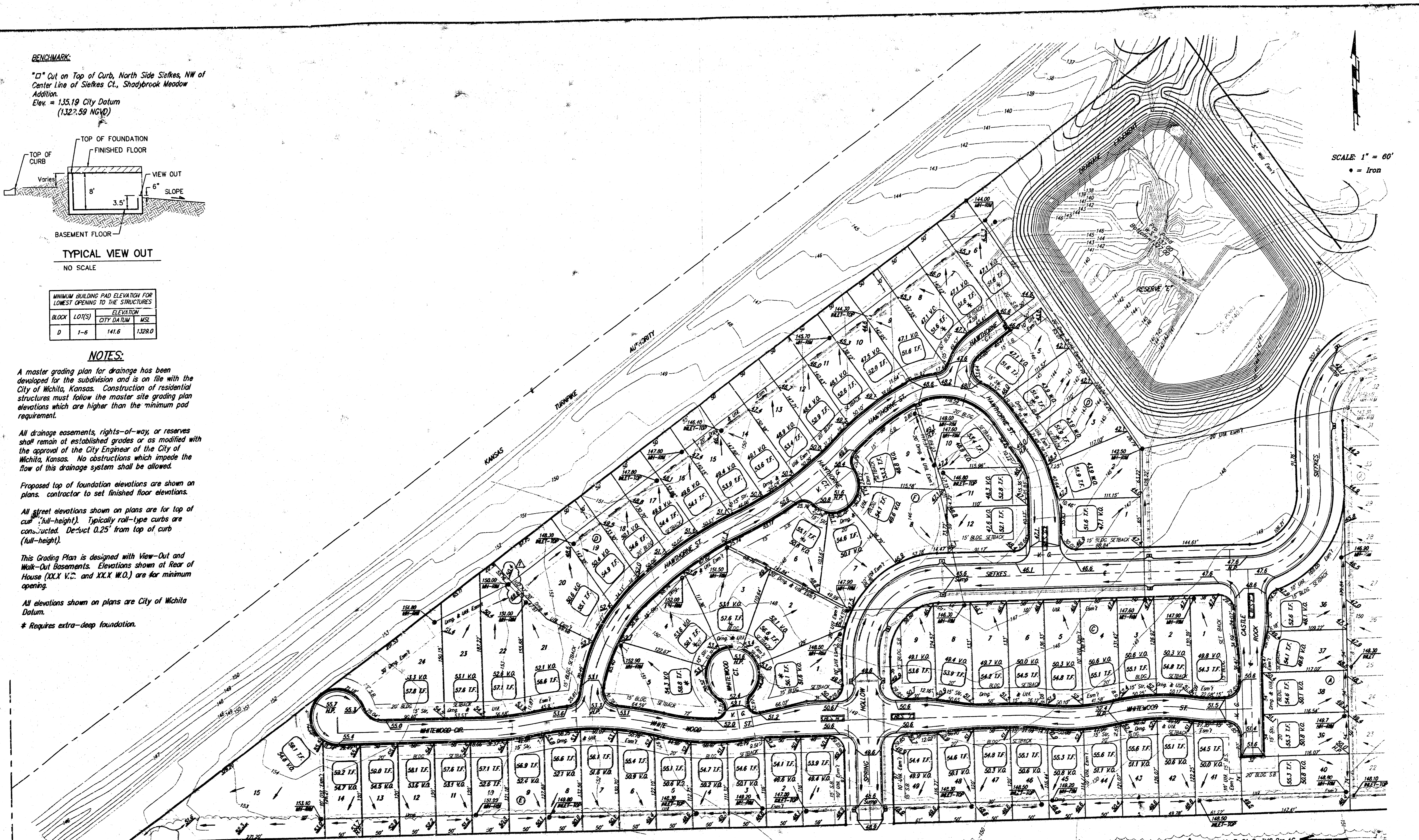
All street elevations shown on plans are for top of curb (full-height). Typically rail-type curbs are constructed. Deduct 0.25' from top of curb (full-height).

This Grading Plan is designed with View-Out and Walk-Out Basements. Elevations shown at Rear of House (XX.X V.C. and XX.X W.O.) are for minimum opening.

All elevations shown on plans are City of Wichita Datum.

* Requires extra-deep foundation.

SCALE: 1" = 60'
• = Iron



Revised 11-7-01 By IMG Per AG

SHOAL CREEK ADDITION
GRADING PLAN
WICHITA, KANSAS

BAUGHMAN COMPANY P.A.
ENGINEERING, SURVEYING, & PLANNING
316-262-7271 • 316 ELLIS • WICHITA, KANSAS 67214

PROJECT NUMBER: _____

DESIGN: NEW DRAWN: JH/JK APPROVED: _____ DATE: 1/23/01 SCALE: 1" = 60'

SHEET 1 OF 2

DID NOT REVISE PAGE 2 @ THIS TIME

Approved
IRH 11/14/01