

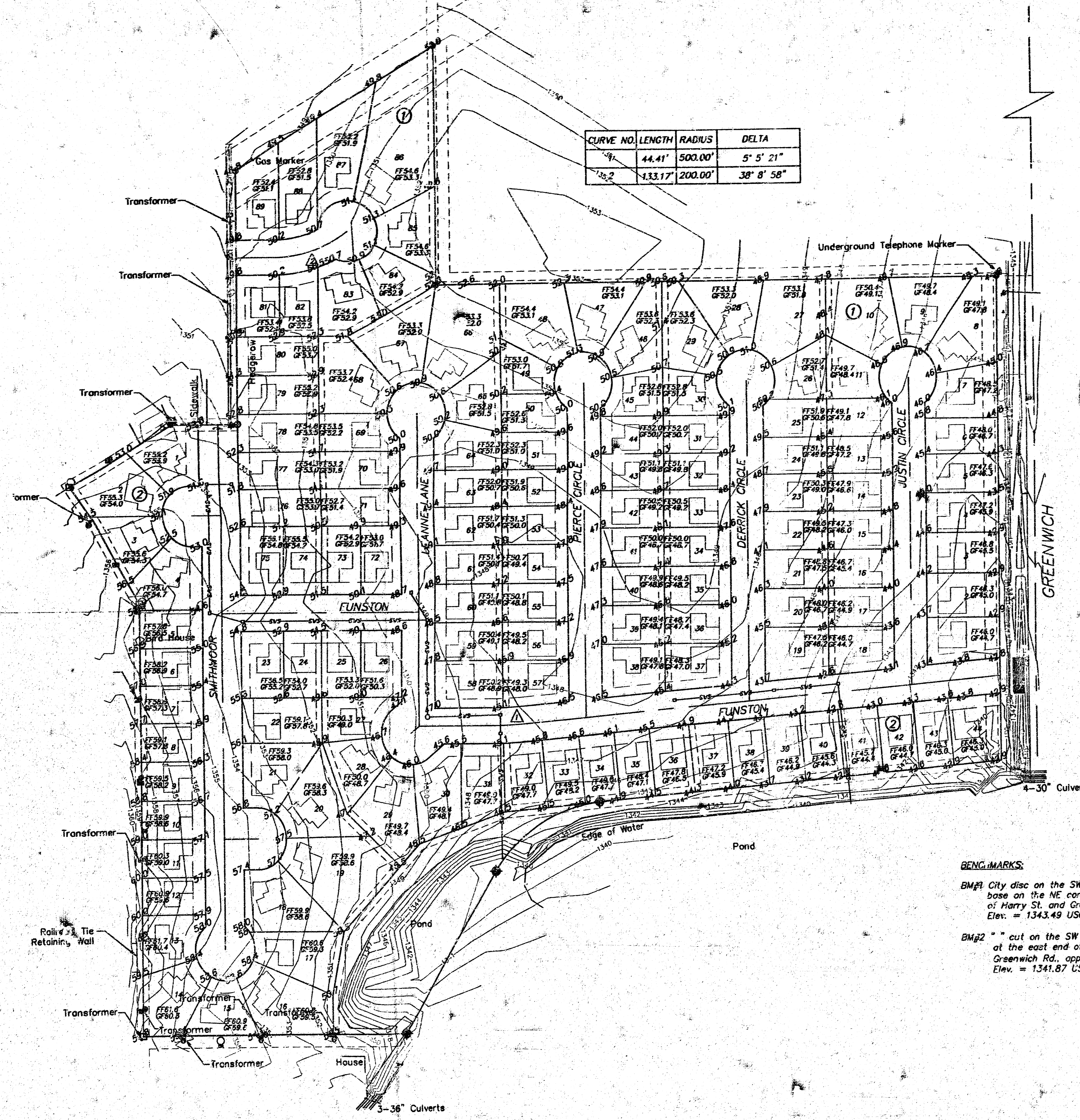
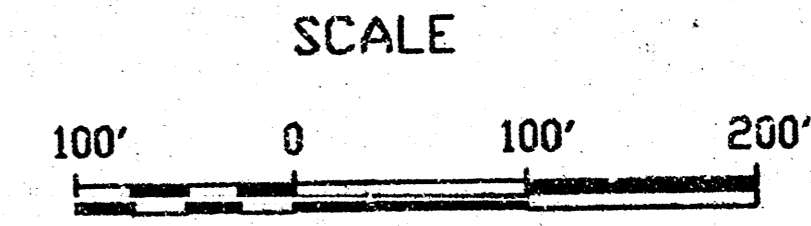
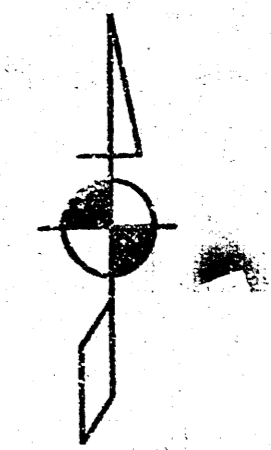
SMITHMOOR 10TH ADDITION

LOT GRADING PLAN

HARRY

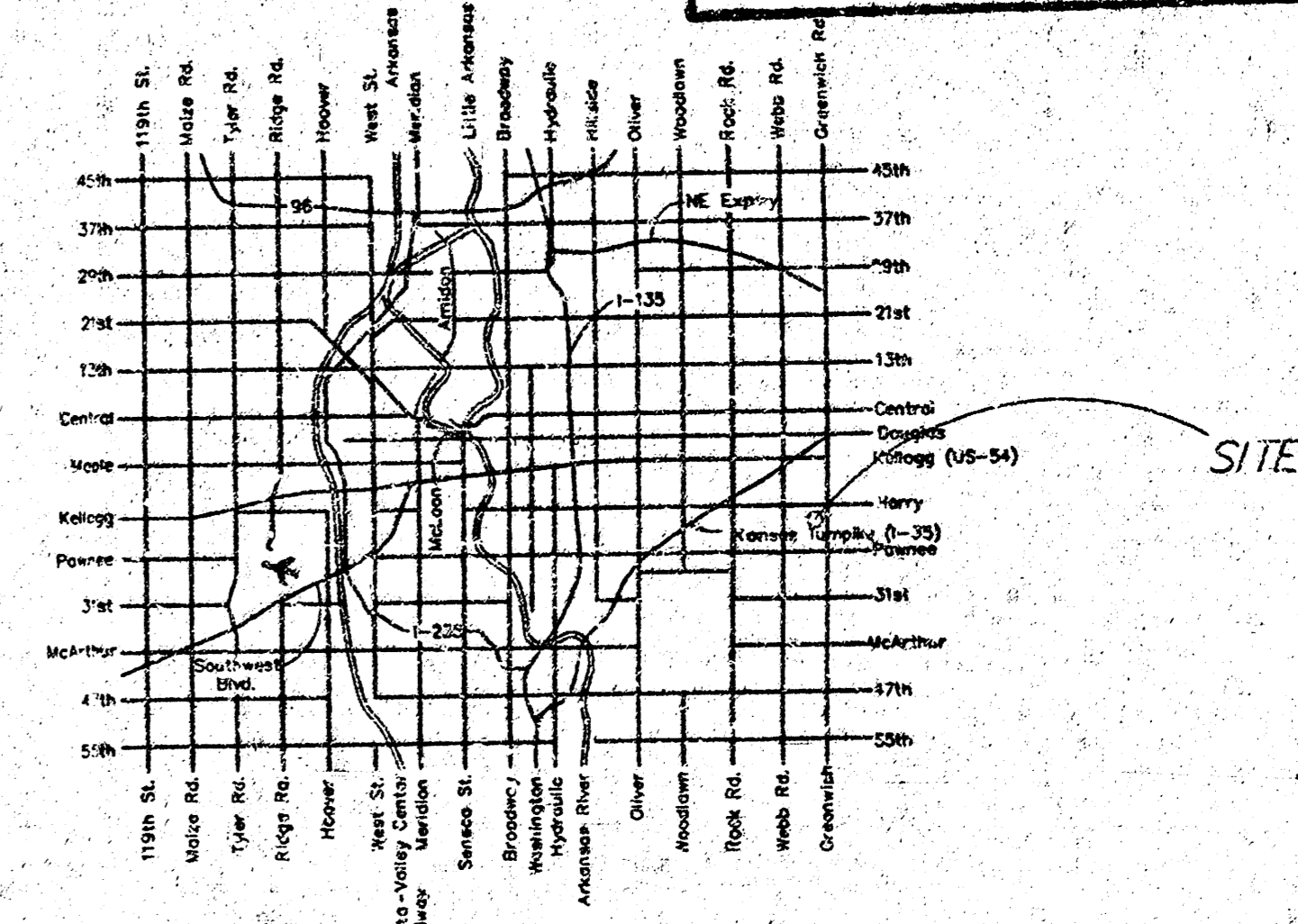
NE Cor. NE 1/4
Sec. 33-275-2E

CURVE NO.	LENGTH	RADIUS	DELTA
1	44.41'	500.00'	5° 5' 21"
2	133.17'	200.00'	38° 8' 58"



- LEGEND**
- Manhole
 - Sign
 - Telephone Pedestal
 - Cable TV Pedestal
 - Tree
 - Power Pole
 - Guy Wire
 - Fire Hydrant
 - Waterline
 - Underground Electric
 - Overhead Electric
 - Gas Line
 - Underground Cable TV
 - 5/8" Rebar (found) AMPA
 - 5/8" Rebar (found) MEPA
 - 40d Nail (found)
 - 5/8" Rebar (set) B.WARD
- FF Finished Floor
GF Garage Floor
12.0 Proposed Grade

**APPROVED
DRAINAGE PLAN**



BENCHMARKS:

BM#1 City disc on the SW corner traffic signal base on the NE corner of the intersection of Harry St. and Greenwich Rd. Elev. = 1343.49 USGS

BM#2 " " cut on the SW corner of the N. Headwall at the east end of pond on the W. side of Greenwich Rd., approx. 1000' S. of Harry St. Elev. = 1341.87 USGS

LOCATION MAP



File No: 0100/prop/11 Date Pre: Prepared: 4/2/11

kemiller
engineering

316 S. Market, Wichita, KS 67202 316/264-0242

SMITHMOOR 10th

New Drainage Rules!