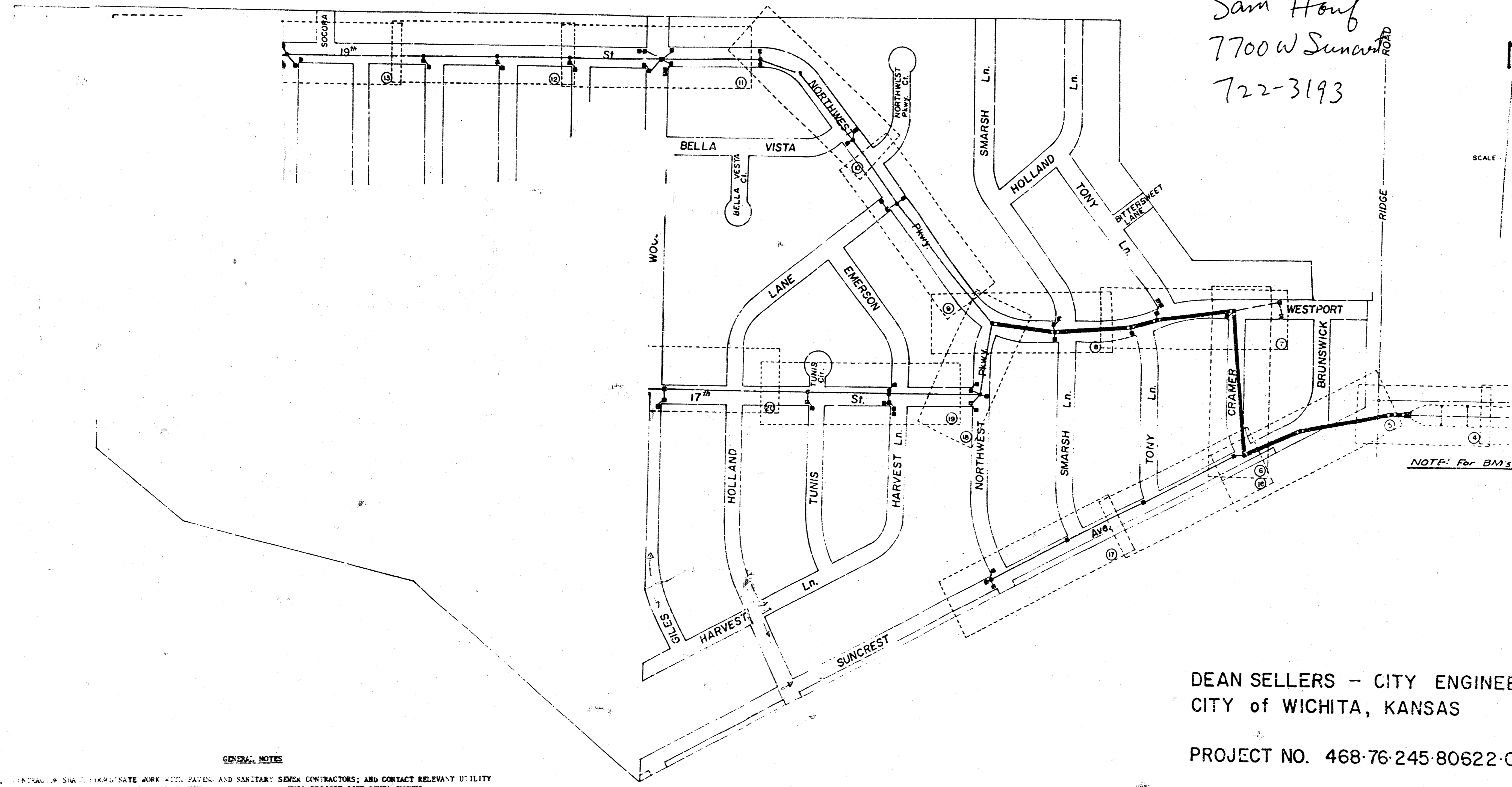


# STORM WATER SEWER NO. 145

Frank Soyeg  
 721-6027  
 7620 Suncrest  
 Sam Houf  
 7700 W Suncrest  
 722-3193



SCALE

NOTE: For BM's

**GENERAL NOTES**

1. CONTRACTOR SHALL COORDINATE WORK WITH WATER AND SANITARY SEWER CONTRACTORS; AND CONTACT RELEVANT UTILITY COMPANIES AND OTHER AGENCIES INVOLVED WITH THIS PROJECT SITE DEVELOPMENTS.
2. FIELD ENGINEER SHALL TAKE CARE OF ALL IRONS AND TRIMBLES IN THE PROJECT AREA PRIOR TO CONSTRUCTION. FIELD ENGINEER SHALL REPAIR ALL SUCH IRONS AND TRIMBLES DISTURBED DURING CONSTRUCTION.

BENEFIT DISTRICT

DEAN SELLERS - CITY ENGINEER  
 CITY of WICHITA, KANSAS

PROJECT NO. 468-76-245-80622-0

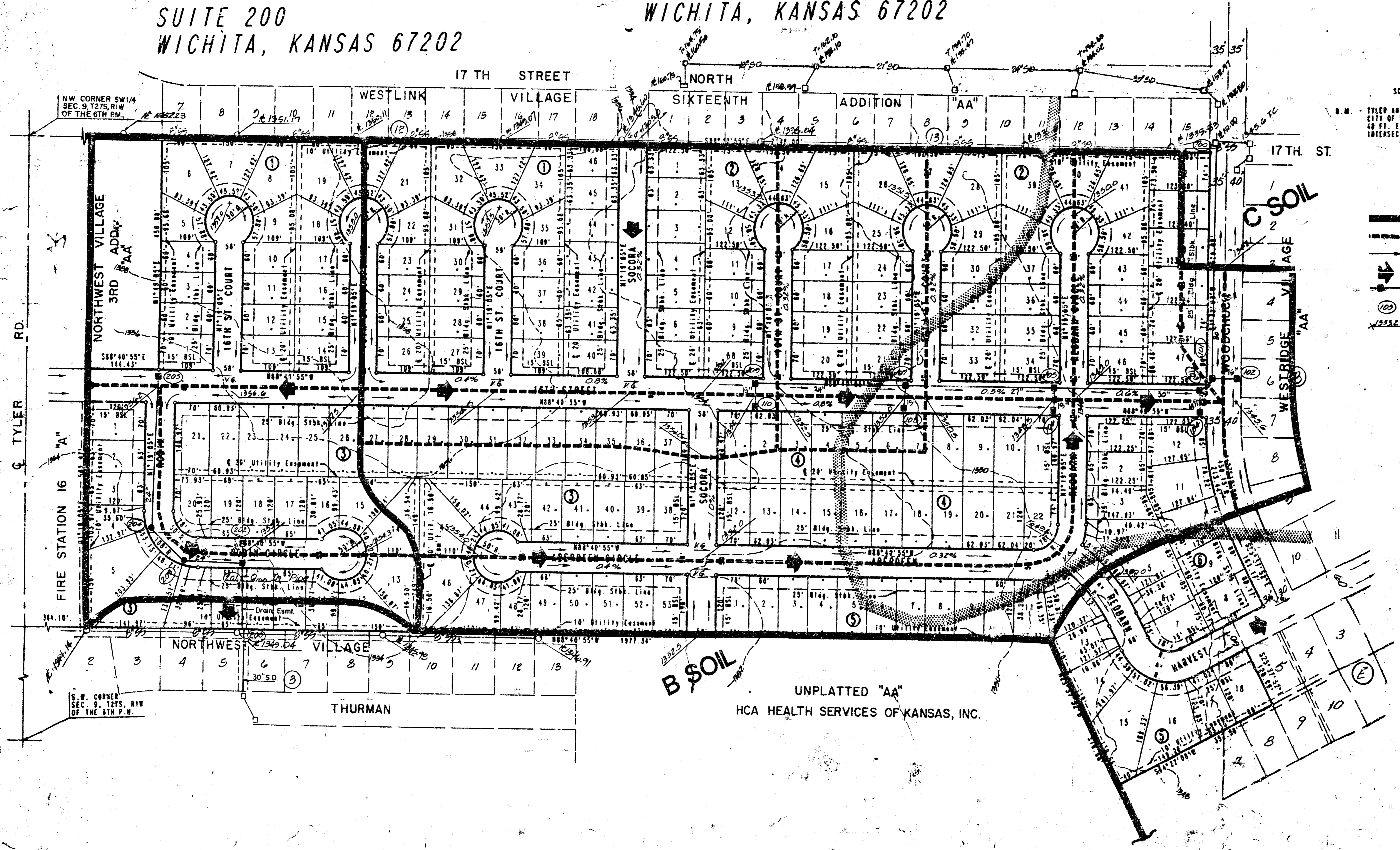
DATE \_\_\_\_\_

# DRAINAGE PLAN 6/22/92

## SOCORA VILLAGE

**SLAWSON INVESTMENT CORPORATION**  
 c/o LARRY A. CHAMBERS  
 104 S. BROADWAY  
 SUITE 200  
 WICHITA, KANSAS 67202

**ENGINEER:**  
**PROFESSIONAL ENGINEERING CONSULTANTS, P.A.**  
 303 S. TOPEKA  
 WICHITA, KANSAS 67202



SCALE: 1"=100'

D.M. TYLER AND 1330 STREET NORTH  
 CITY OF WICHITA BEACH BARGE BASIN  
 48 FT. EAST AND 48 FT. NORTH OF  
 INTERSECTION OF CENTERLINE NORTH  
 ELEV. +167.929 CITY DATUM

**LEGEND**

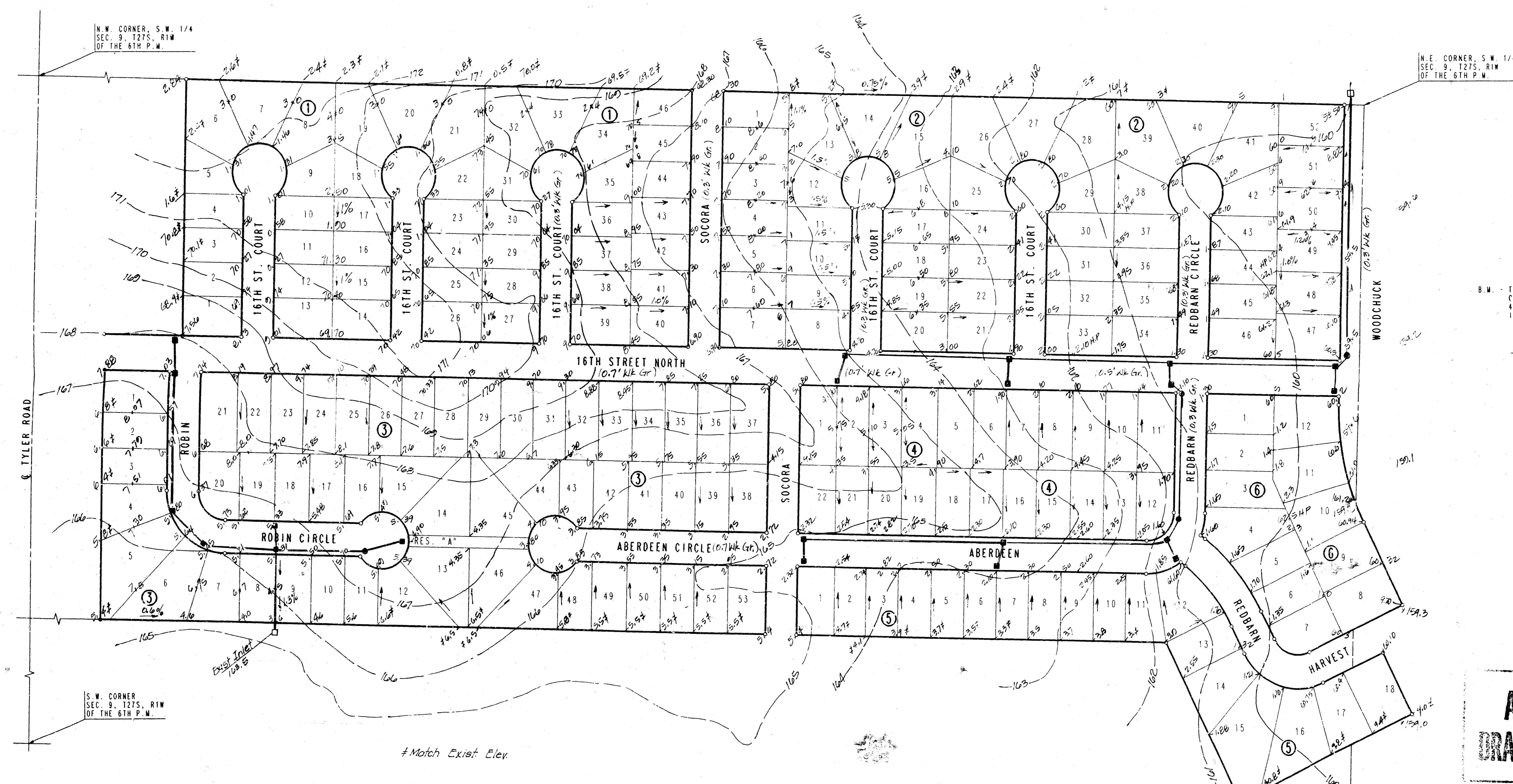
- Drainage Basin Boundary
- Drainage Sub-Basin Boundary
- Drainage Direction - Minor Storm
- Drainage Direction - Major Storm
- Proposed Storm Water Sewer Line
- No. Identification Point
- Estimated Future Top of Curb Area

UNPLATTED "AA"  
 HCA HEALTH SERVICES OF KANSAS, INC.



# SOCORA VILLAGE

## AN ADDITION TO WICHITA, SEDGWICK COUNTY, KANSAS



SCALE: 1"=100'

○ = IRON SET  
● = IRON FOUND

B.M. TYLER AND 13TH STREET NORTH  
CITY OF WICHITA BENCH MARK DISC.  
48 FT. EAST AND 48 FT. NORTH OF  
INTERSECTION OF CENTERLINE BOTH.  
ELEV. +167.929 CITY DATUM

# Match Exist. Elev.

**APPROVED  
DRAINAGE PLAN**

No.	Revision	By	Date
<b>DETAILED GRADING PLAN</b>			
<b>PROFESSIONAL ENGINEERING CONSULTANTS, P.A.</b>			
ENGINEERS WICHITA, KANSAS			
Designed by	M.H.B.	Job No.	34-DE200
Drawn by	E.S.	Date	10-29-92
		Sht.	1 of 1

S.E. Cor. S.W. 1/4  
Sec. 9, T27S, R1W  
of 6th P.M.

N.W. CORNER, S.W. 1/4  
SEC. 9, T27S, R1W  
OF THE 6TH P.M.

N.E. CORNER, S.W. 1/4  
SEC. 9, T27S, R1W  
OF THE 6TH P.M.

S.W. CORNER  
SEC. 9, T27S, R1W  
OF THE 6TH P.M.

# Match Exist. Elev.