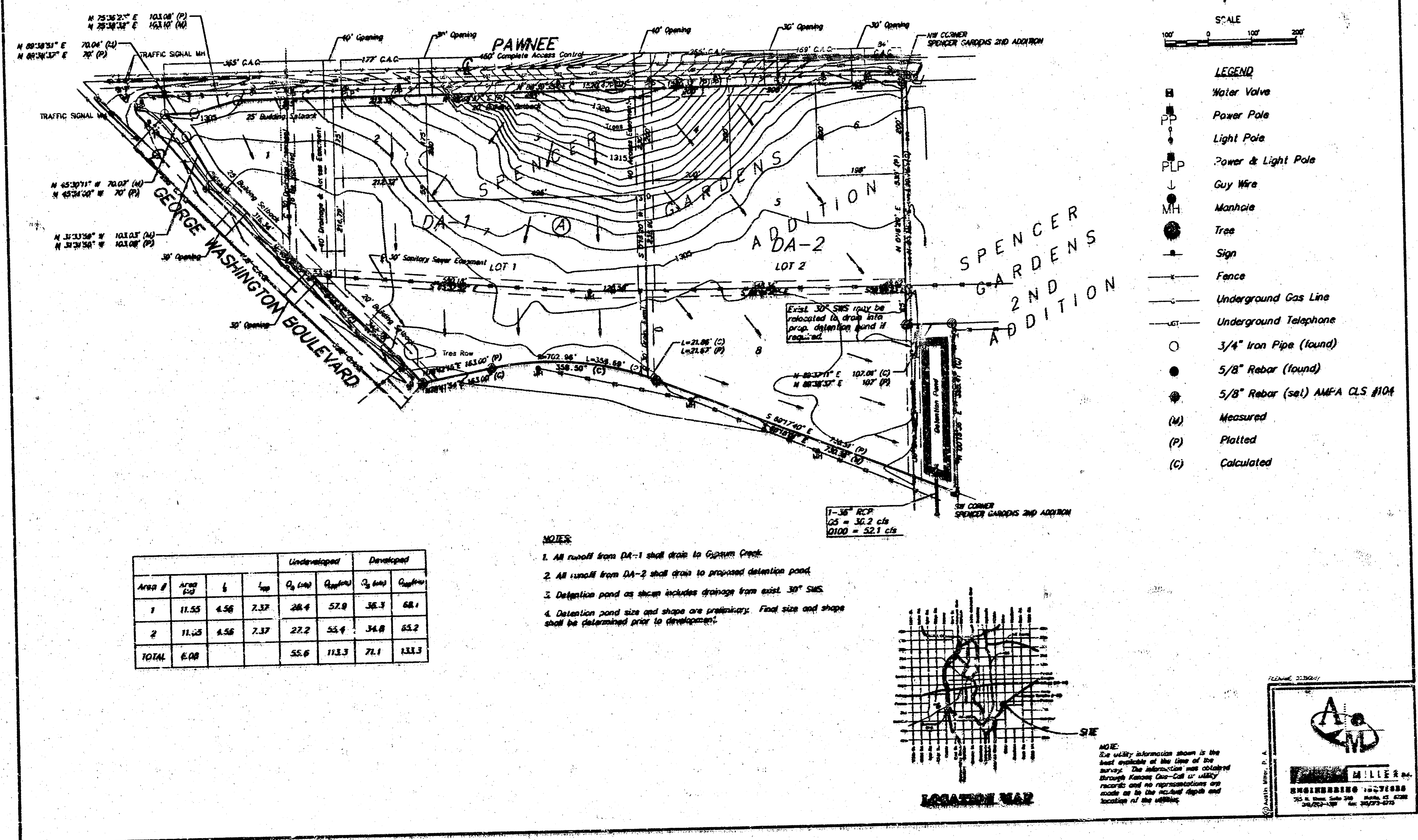
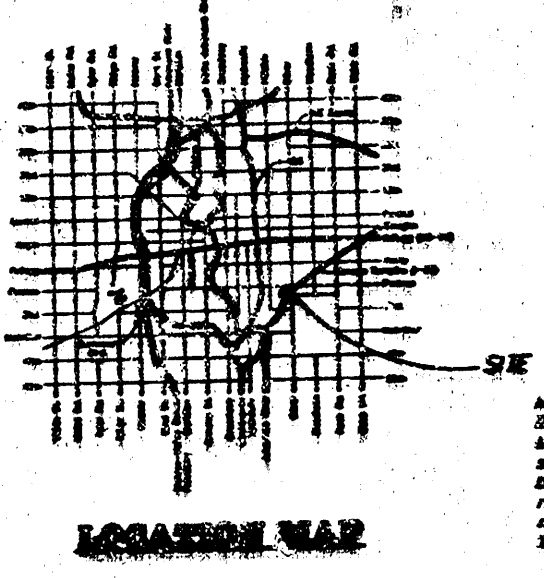


**DRAINAGE PLAN FOR:
REPLAT OF PART OF SPENCER GARDENS ADDITION
WICHITA, SEDGWICK COUNTY, KANSAS**
A TRACT OF LAND IN THE NE 1/4, SEC. 2, T28S, R1E



Area #	Acres	ft	Underdrain		Developed		
			sq ft	sq ft	sq ft	sq ft	
1	11.55	4.56	2.37	26.4	52.8	36.3	68.1
2	11.62	4.56	2.37	22.2	55.6	34.8	65.2
TOTAL	23.17			48.6	108.4	71.1	133.3

- NOTES**
- All runoff from DA-1 shall drain to Cuyam Creek.
 - All runoff from DA-2 shall drain to proposed detention pond.
 - Detention pond as shown includes drainage from exist. 30" DWS.
 - Detention pond size and shape are preliminary. Final size and shape shall be determined prior to development.



W. M. MILLER & CO.
REGISTERED PROFESSIONAL ENGINEERS
1111 W. 10th St., WICHITA, KANSAS