

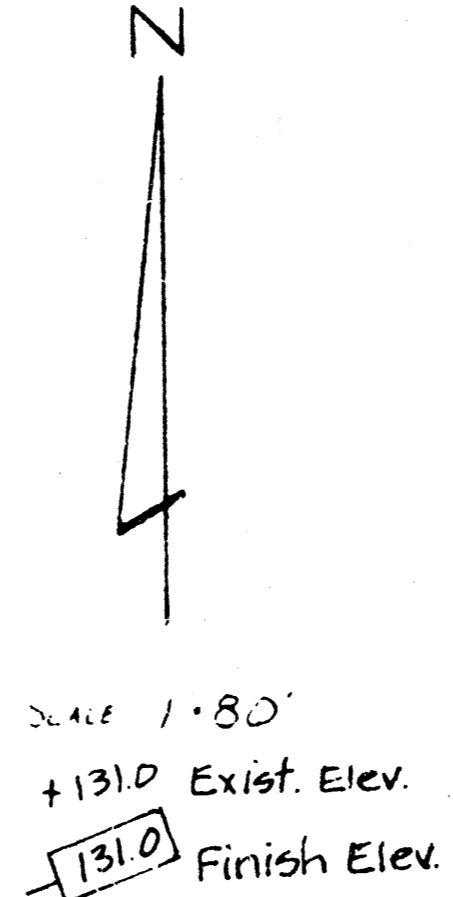
PRELIMINARY PLAT

B. R. STEPHENSON ADDITION

LEGAL DESCRIPTION:

A tract of land in the Northeast Quarter of the Northeast Quarter of Section 32, Township 6 South, Range 1 East of the 6th P.M., Sedgwick County, Kansas

Beginning at the Northwest corner of said Northeast Quarter of the Northeast Quarter, thence N 90° 00' 00" E (assumed) along the North line of said Northeast Quarter of the Northeast Quarter for 668.38 feet, thence S 20° 41' 51" E for 1,342.24 feet to the South line of said Northeast Quarter of the Northeast Quarter; thence S 89° 59' 17" W along said South line for 463.52 feet, thence N 00° 54' 18" W for 100.0 feet; thence S 89° 59' 17" W for 200.0 feet, thence N 00° 54' 18" W for 1,242.44 feet to the Point of Beginning, said tract containing 190 acres exclusive of Street Right-of-Way

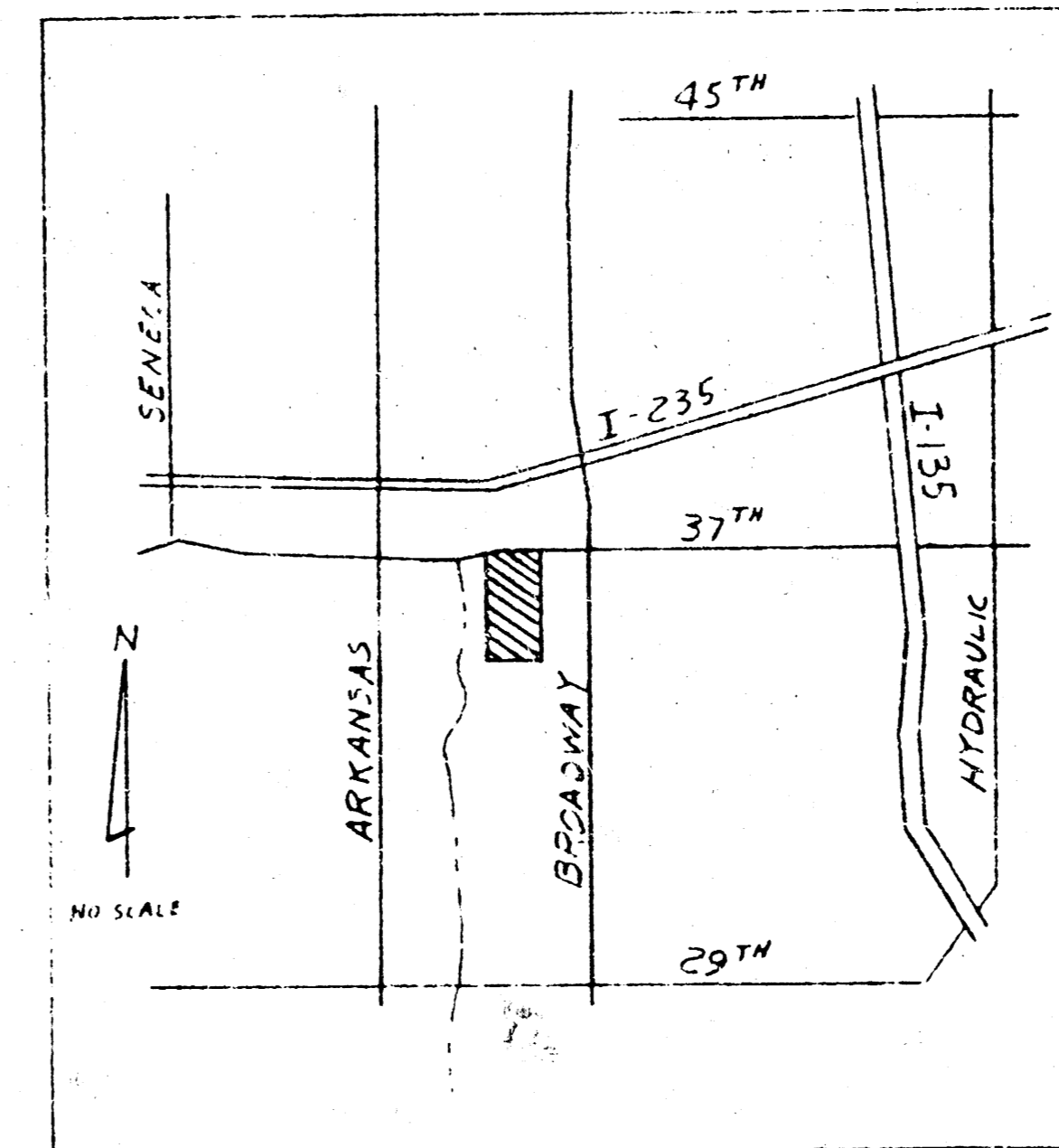


SANITARY SEWER AND DRAINAGE PLAN

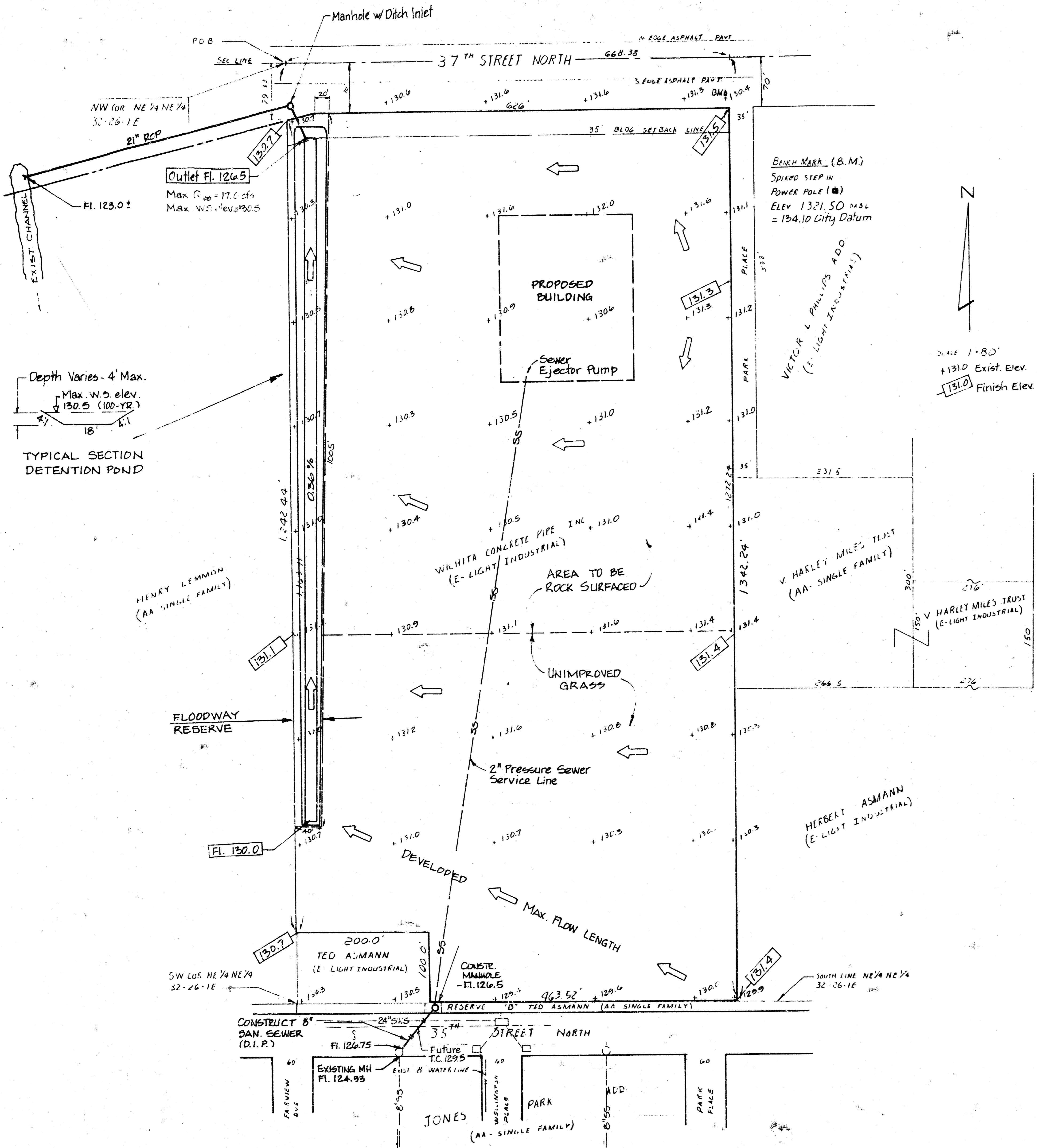
See Runoff Calculations 10-23-91
REV. 10-25-91

BAUGHMAN COMPANY P. A.
SURVEYING & ENGINEERING
316/782-7271 • 315 ELLIS • WICHITA, KANSAS 67211
Rev. 10-28-91

DA = 19.5 Ac.
Undeveloped $Q_{100} = 17.6$ cfs
Developed $Q_{100} = 25.9$ cfs
Reqd Detention = 1.8 Ac. Ft.



VICINITY MAP



NAME OF PROPOSED SUBDIVISION:
B. R. STEPHENSON ADDITION

PRELIMINARY PLAT

OWNER-SUBDIVIDER: WIKHITA CONCRETE PIPE, INC. PO Box 369, McPherson, KS 67460 TELE: 316 241-4362		
SCALE: 1" = 80'	APPROVED BY:	DRAWN BY:
DATE: 9-6-91		
LAND SURVEYOR: MACON CO., ENGINEERS & SURVEYORS 851 N. WEST ST, SUITE 100, WICHITA, KS 67203 PH: 316-249-2712		
		DRAWING NUMBER: 9078