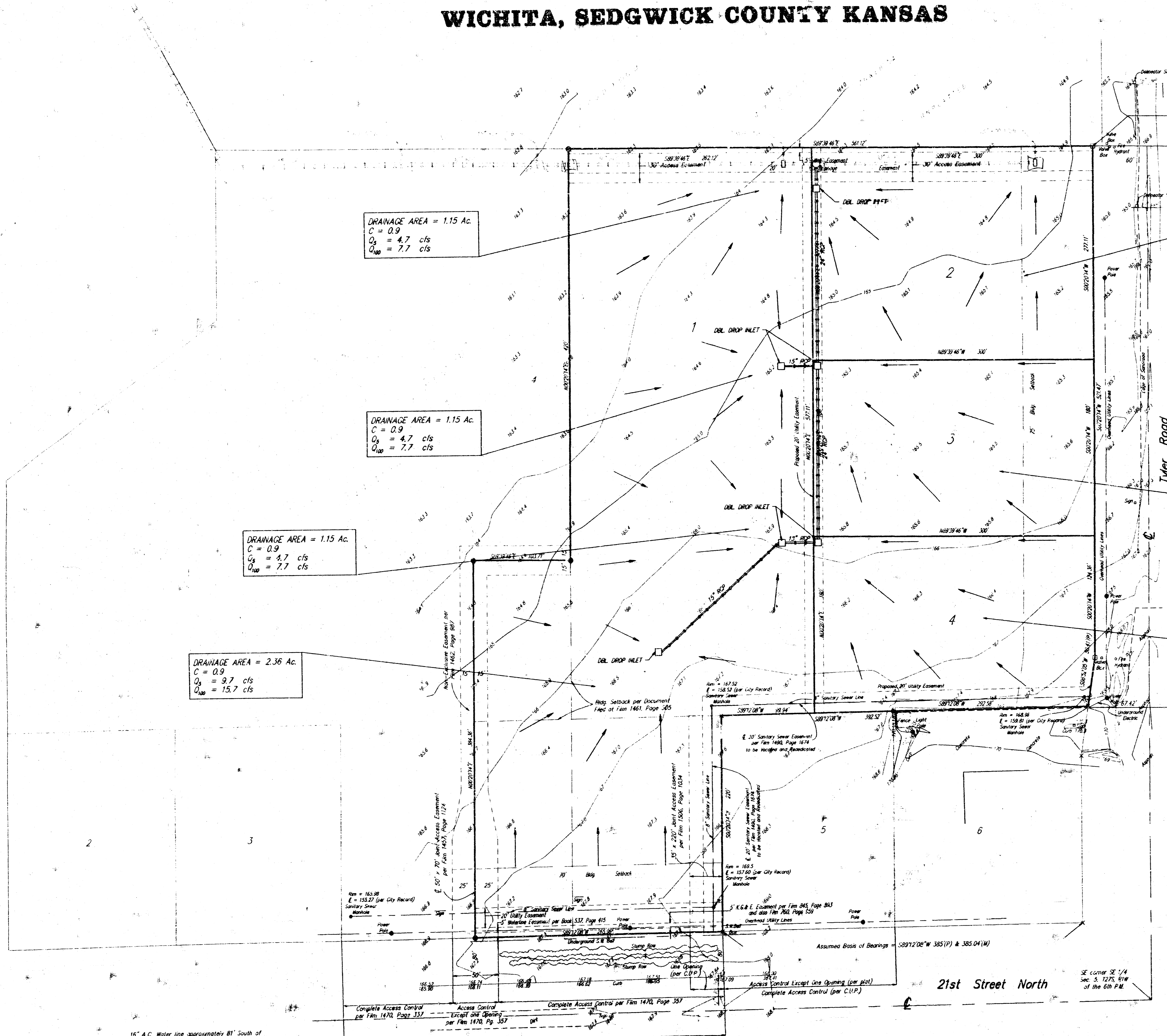


DRAINAGE PLAN STERLING FARM'S 5TH ADDITION WICHITA, SEDGWICK COUNTY KANSAS



(?) = Plotted
(M) = Measured

SCALE
1" = 50'

- = 3/4" P.E.C. Iron Pipe Found
- = #6 Baughman Rebar Found
- × = #4 S.P.B. Rebar Found
- = #4 Baughman Rebar Set

Contours @ 1' intervals

BENCHMARK
City of Wichita Bench Mark. NE corner of intersection 73.6' North and 53.3' East of center line of both 12.5' NNE of center traffic light pole. 91.7' NE of section corner iron. Elevation = 170.95

NOTE: Reciprocal Easements per Documents filed at Film 1461, Page 505, and also at Film 1492, Page 271.

Tyler Road
Access Control Except Three (3) Openings

16" A.C. Water line approximately 81' South of the centerline of 21st Street North.

May 1, 1995