

STONEBOROUGH

AN ADDITION TO WICHITA, SEDGWICK COUNTY, KANSAS

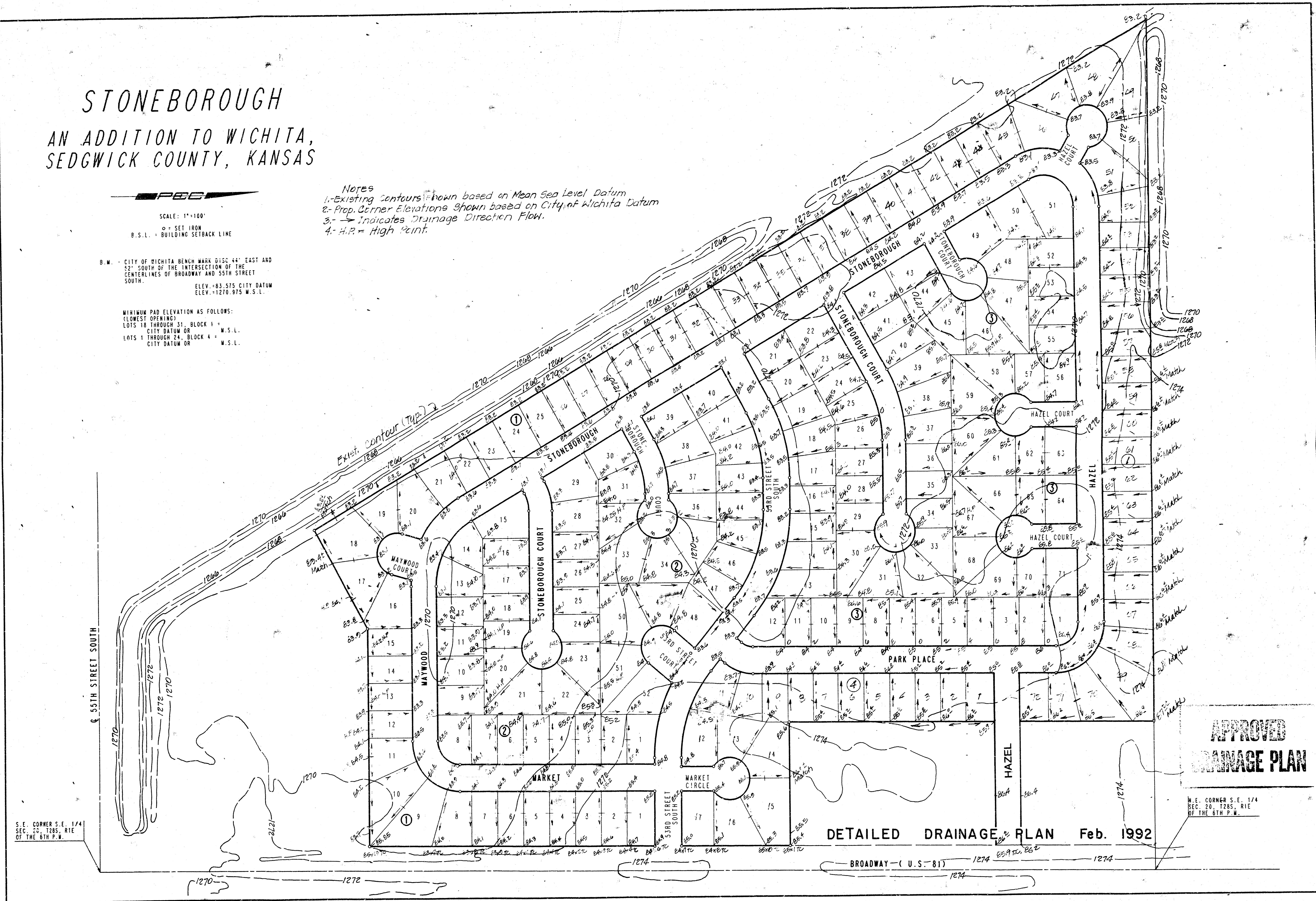
PEE

SCALE: 1"=100'
 O = SET IRON
 B.S.L. = BUILDING SETBACK LINE

B.M. - CITY OF WICHITA BENCH MARK DISC 44' EAST AND
 52' SOUTH OF THE INTERSECTION OF THE
 CENTERLINES OF BROADWAY AND 55TH STREET
 SOUTH.
 ELEV. = 83.575 CITY DATUM
 ELEV. = 1270.975 M.S.L.

MINIMUM PAD ELEVATION AS FOLLOWS:
 (LOWEST OPENING)
 LOTS 18 THROUGH 31, BLOCK 1 =
 CITY DATUM OR
 LOTS 1 THROUGH 24, BLOCK 4 =
 CITY DATUM OR
 M.S.L.

- Notes**
- 1.-Existing Contours shown based on Mean Sea Level Datum
 - 2.-Prop. Corner Elevations Shown based on City of Wichita Datum
 - 3.- → Indicates Drainage Direction Flow.
 - 4.- H.P. = High Point.



S.E. CORNER S.E. 1/4
 SEC. 20, T28S, R1E
 OF THE 6TH P.M.

DETAILED DRAINAGE PLAN Feb. 1992

**APPROVED
 DRAINAGE PLAN**

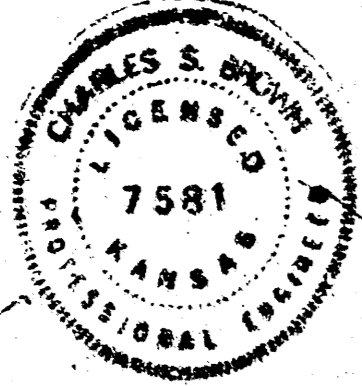
N.E. CORNER S.E. 1/4
 SEC. 20, T28S, R1E
 OF THE 6TH P.M.

DRAINAGE PLAN 11-12-91

STONE BOROUGH

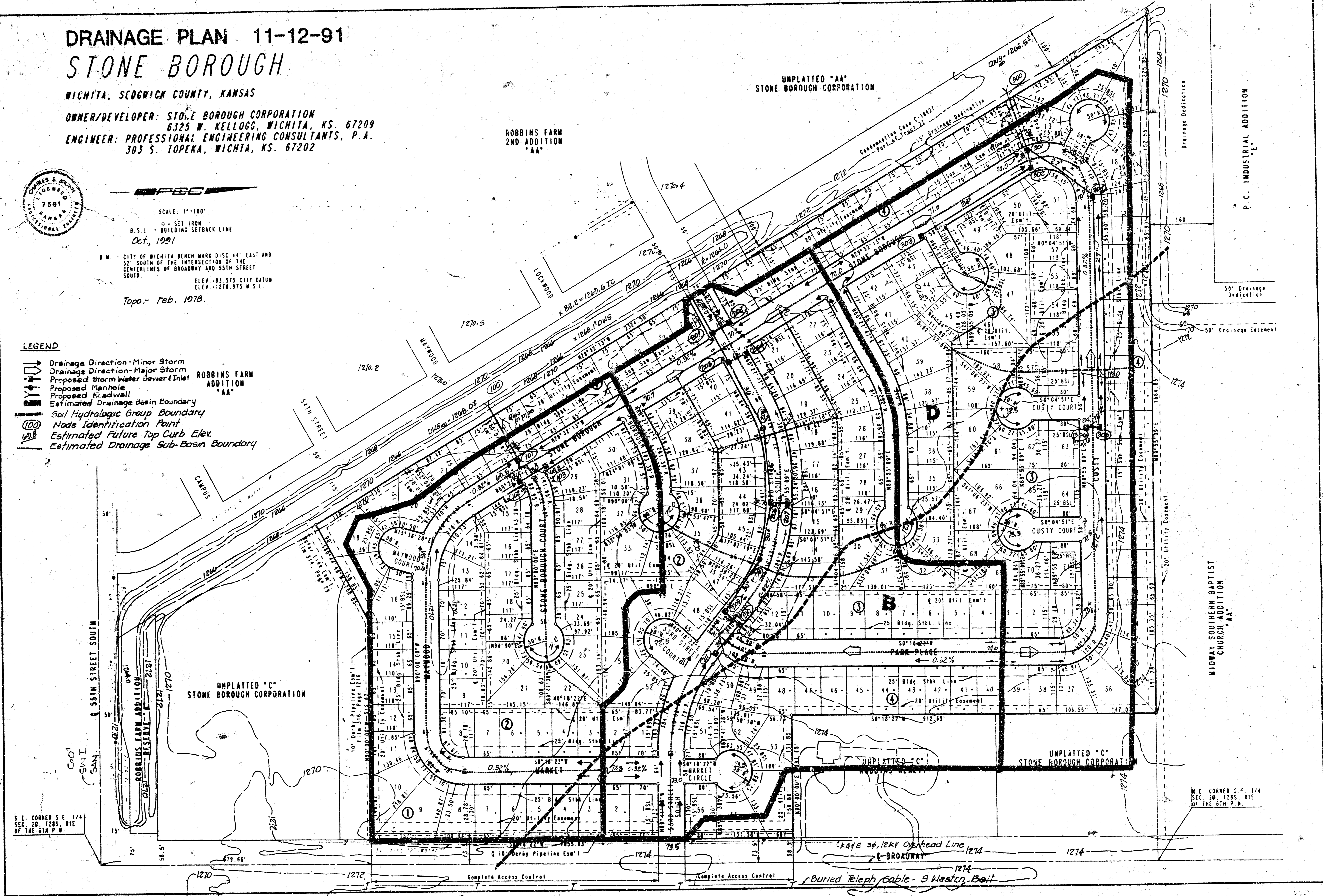
WICHITA, SEDGWICK COUNTY, KANSAS

OWNER/DEVELOPER: STONE BOROUGH CORPORATION
 6325 W. KELLOGG, WICHITA, KS. 67209
 ENGINEER: PROFESSIONAL ENGINEERING CONSULTANTS, P.A.
 303 S. TOPEKA, WICHITA, KS. 67202



SCALE: 1"=100'
 SET IRON
 B.S.L. BUILDING SETBACK LINE
 Oct, 1991
 B.M. CITY OF WICHITA BENCH MARK DISC 44" EAST AND
 52" SOUTH OF THE INTERSECTION OF THE
 CENTERLINES OF BROADWAY AND 55TH STREET
 SOUTH.
 ELEV. +85.575 CITY DATUM
 ELEV. +1270.375 W.S.L.
 Topo. Feb. 1978.

- LEGEND**
- Drainage Direction - Minor Storm
 - Drainage Direction - Major Storm
 - Proposed Storm Water Sewer Inlet
 - Proposed Manhole
 - Proposed Easement
 - Estimated Drainage Basin Boundary
 - Soil Hydrologic Group Boundary
 - Node Identification Point
 - Estimated Future Top Curb Elev.
 - Estimated Drainage Sub-Basin Boundary



S. E. CORNER S. E. 1/4
 SEC. 20, T28S, R1E
 OF THE 6TH P.M.

N. E. CORNER S. E. 1/4
 SEC. 20, T28S, R1E
 OF THE 6TH P.M.