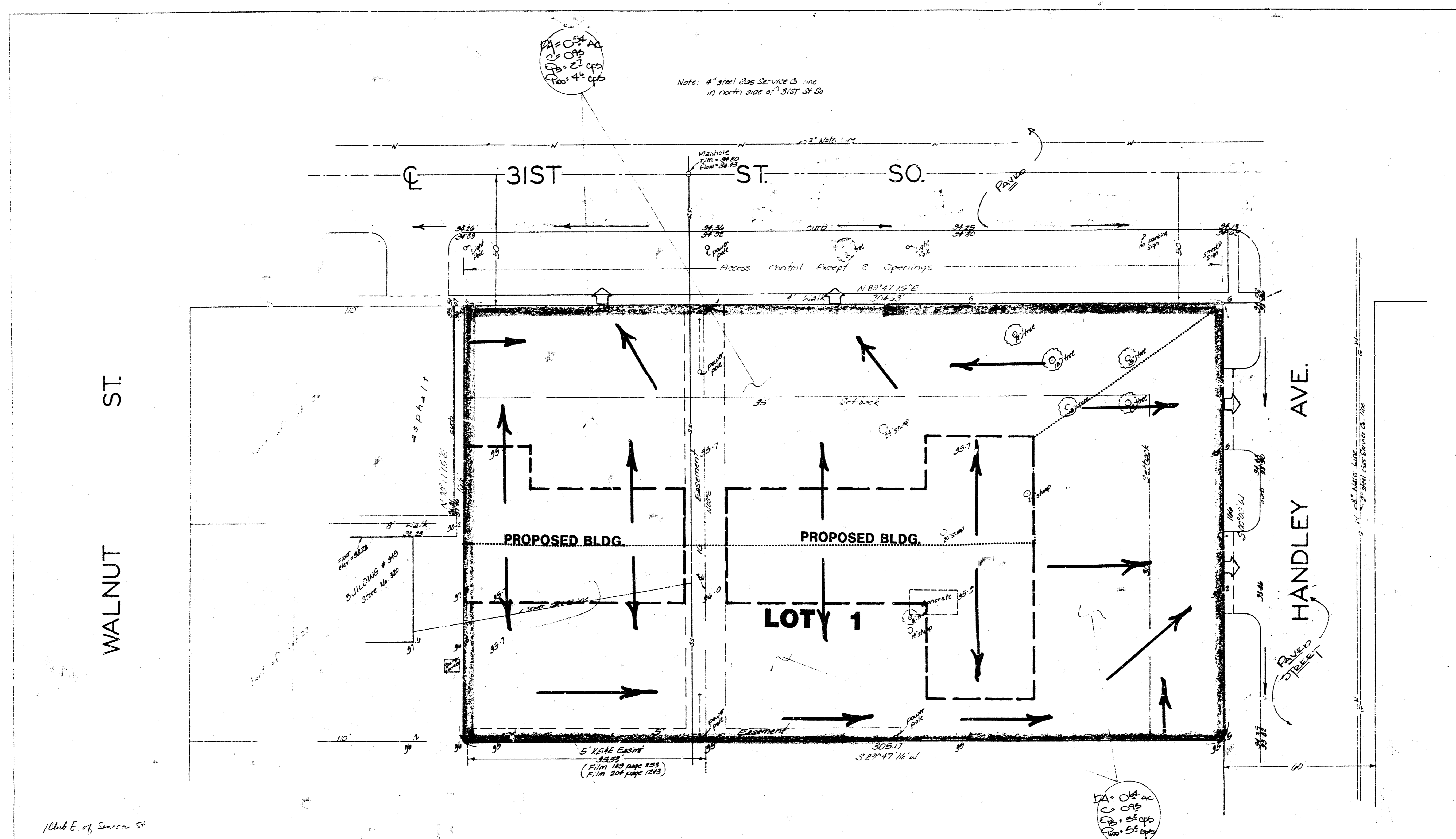
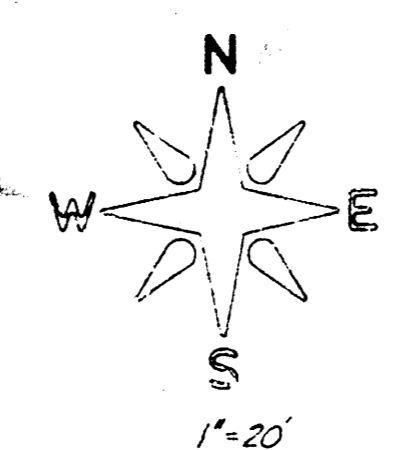


SUTHERLAND SIXTH ADDITION
(Drainage)



1/16th E. of Section 5th



Bench mark:
Galvanized spike in south end of
Telephone pole at the SW corner
of 31st St. So. & Silver St.
Elevation = 95.35 City Datum

SKETCH PLAT
SUTHERLAND SIXTH ADDITION

LOTS 26 AND 27, EXCEPT THE WEST 110 FEET THEREOF, ALL OF LOTS 24 AND 25,
S/LEASE 2ND. ADDITION TO WICHITA, SEDGWICK COUNTY, KANSAS.

H. STAN CHILTON

DRAINAGE PLAN

NOTE:
Ridgoff face for the commercial site - 0'±.
Ridgoff will drain to 31st St. So. & Handley.
Discharge will be there (if possible)
or flunks if necessary.
31st St. drains basically east and south
on Handley. The closest storm sewers
are located at 33rd St. So.

BAUGHMAN COMPANY, P.A.
SURVEYORS
316/262-7271 • 330 LAURA • WICHITA, KANSAS 67211