

# DRAINAGE PLAN THUNDERBIRD 8TH ADDITION

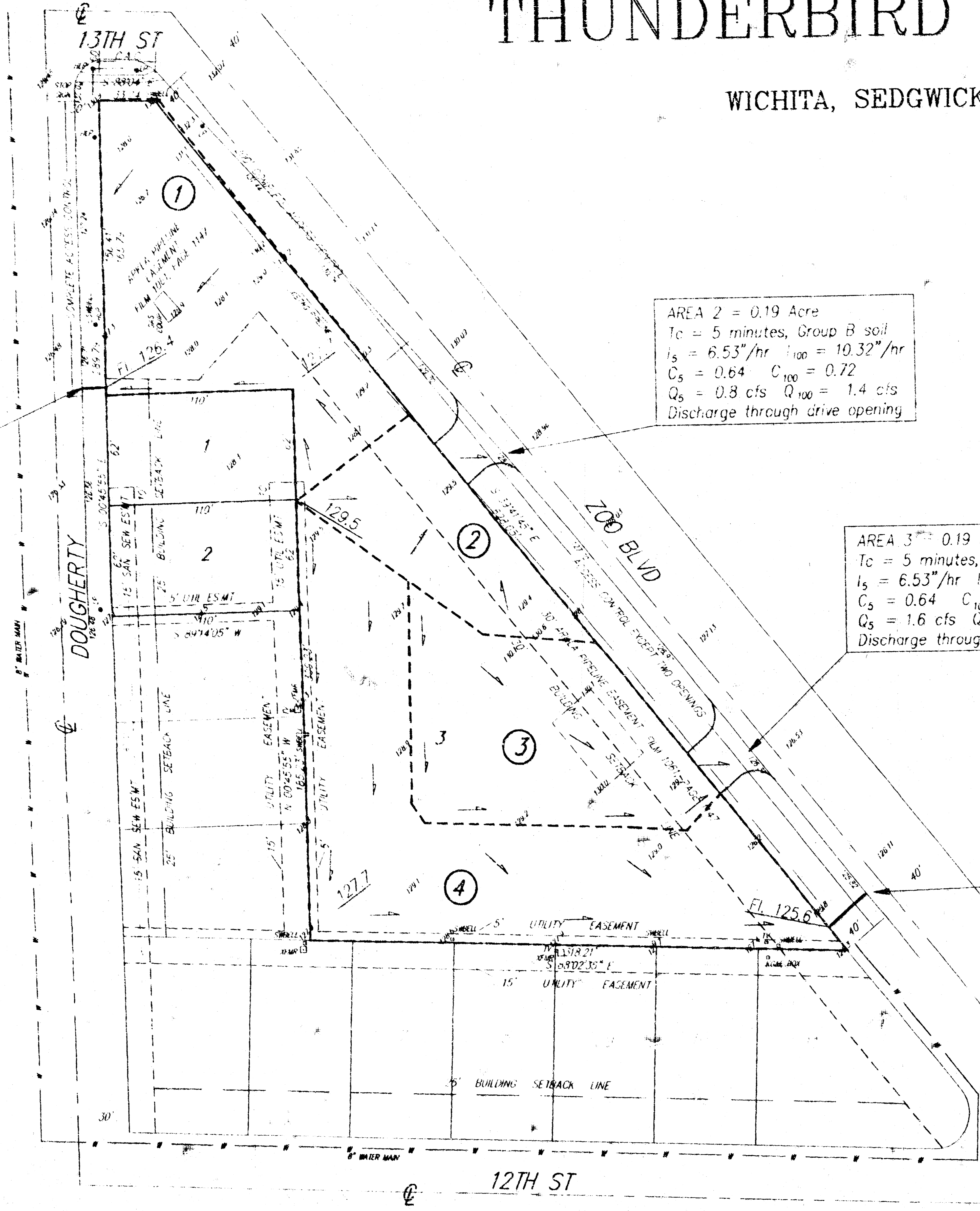
WICHITA, SEDGWICK COUNTY, KANSAS

AREA 1 = 0.43 Acre  
 $T_c = 5$  minutes, Group B soil  
 $I_5 = 6.53"/hr$   $I_{100} = 10.32"/hr$   
 $C_s = 0.64$   $C_{100} = 0.72$   
 $Q_5 = 1.8$  cfs  $Q_{100} = 3.2$  cfs  
 Use 8" pipe @ 2% through curb

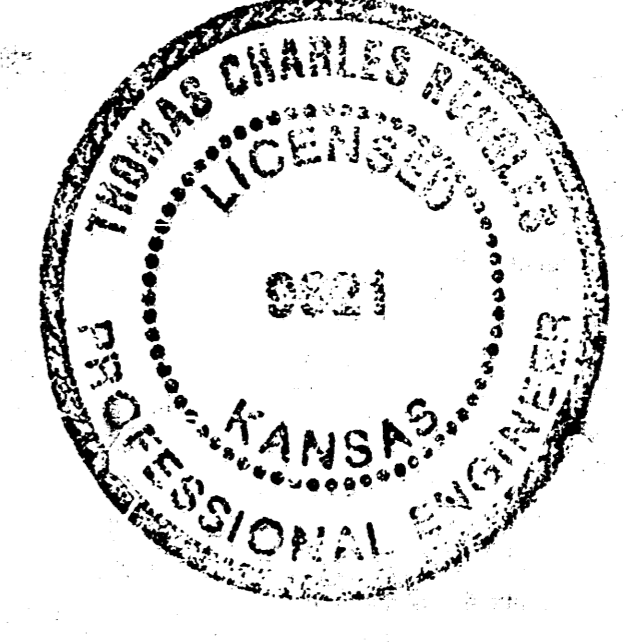
AREA 2 = 0.19 Acre  
 $T_c = 5$  minutes, Group B soil  
 $I_5 = 6.53"/hr$   $I_{100} = 10.32"/hr$   
 $C_s = 0.64$   $C_{100} = 0.72$   
 $Q_5 = 0.8$  cfs  $Q_{100} = 1.4$  cfs  
 Discharge through drive opening

AREA 3 = 0.19 Acre  
 $T_c = 5$  minutes, Group B soil  
 $I_5 = 6.53"/hr$   $I_{100} = 10.32"/hr$   
 $C_s = 0.64$   $C_{100} = 0.72$   
 $Q_5 = 1.6$  cfs  $Q_{100} = 2.8$  cfs  
 Discharge through drive opening

AREA 4 = 0.60 Acre  
 $T_c = 10$  minutes, Group B soil  
 $I_5 = 5.34"/hr$   $I_{100} = 8.54"/hr$   
 $C_s = 0.64$   $C_{100} = 0.72$   
 $Q_5 = 2.1$  cfs  $Q_{100} = 3.7$  cfs  
 Use 2 - 8" Pipes @ 1%  
 through curb.



1" = 40'  
 ELEV. = CITY L.A.R.M.  
 C.A.C. = COMPLETE ACCESS CURB



# DRAINAGE PLAN THUNDERBIRD 8TH ADDITION

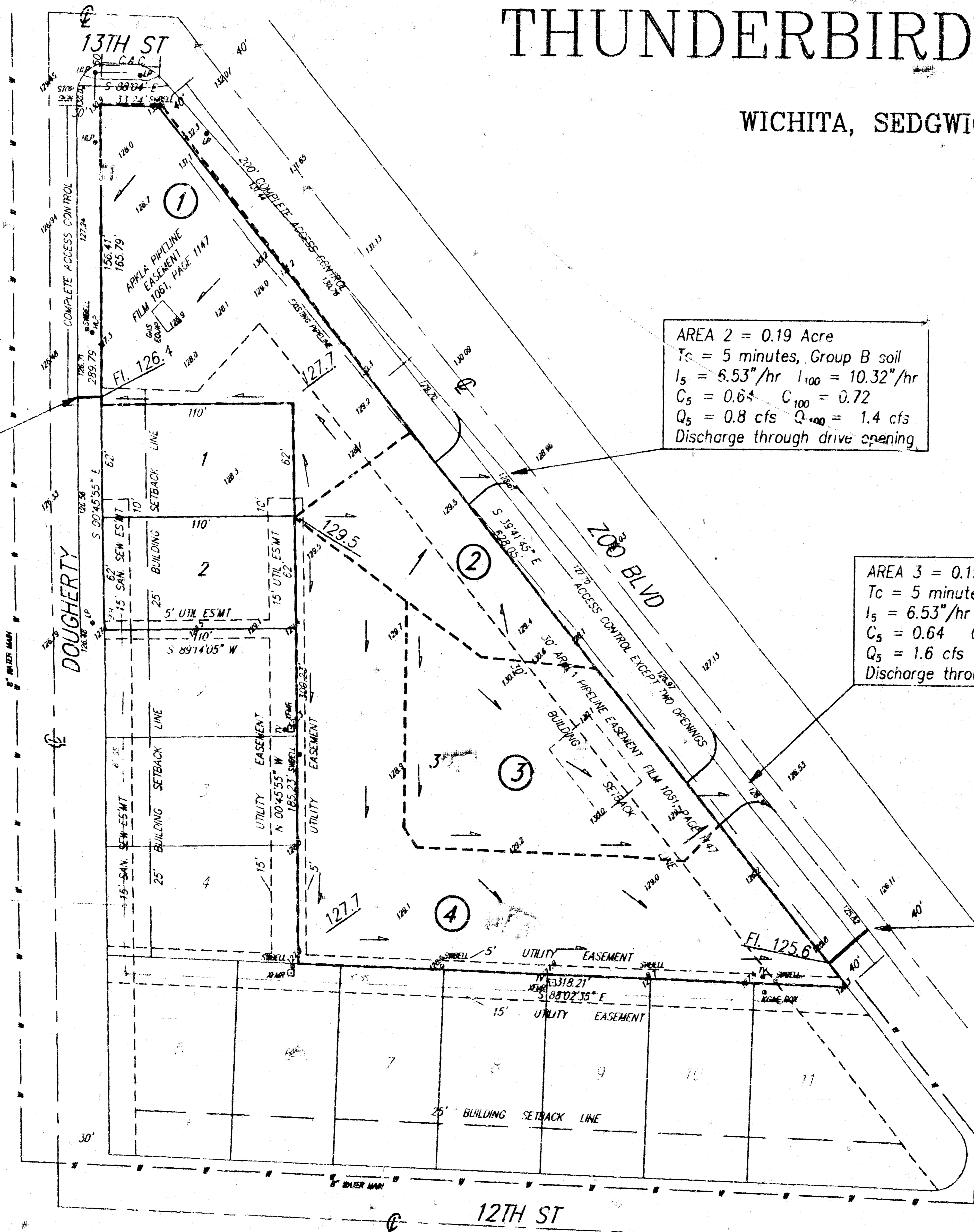
WICHITA, SEDGWICK COUNTY, KANSAS

AREA 1 = 0.43 Acre  
 $T_c = 5$  minutes, Group B soil  
 $I_5 = 6.53''/hr$   $I_{100} = 10.32''/hr$   
 $C_5 = 0.64$   $C_{100} = 0.72$   
 $Q_5 = 1.8$  cfs  $Q_{100} = 3.2$  cfs  
 Use 8" pipe @ 2% through curb

AREA 2 = 0.19 Acre  
 $T_c = 5$  minutes, Group B soil  
 $I_5 = 6.53''/hr$   $I_{100} = 10.32''/hr$   
 $C_5 = 0.64$   $C_{100} = 0.72$   
 $Q_5 = 0.8$  cfs  $Q_{100} = 1.4$  cfs  
 Discharge through drive opening

AREA 3 = 0.19 Acre  
 $T_c = 5$  minutes, Group B soil  
 $I_5 = 6.53''/hr$   $I_{100} = 10.32''/hr$   
 $C_5 = 0.64$   $C_{100} = 0.72$   
 $Q_5 = 1.6$  cfs  $Q_{100} = 2.8$  cfs  
 Discharge through drive opening

AREA 4 = 0.60 Acre  
 $T_c = 10$  minutes, Group B soil  
 $I_5 = 5.34''/hr$   $I_{100} = 8.54''/hr$   
 $C_5 = 0.64$   $C_{100} = 0.72$   
 $Q_5 = 2.1$  cfs  $Q_{100} = 3.7$  cfs  
 Use 2 - 8" Pipes @ 1%  
 through curb.



SRB  
 1" = 50'  
 ELEV. = CITY DATUM  
 C.A.C. = COMPLETE ACCESS CONTROL

