

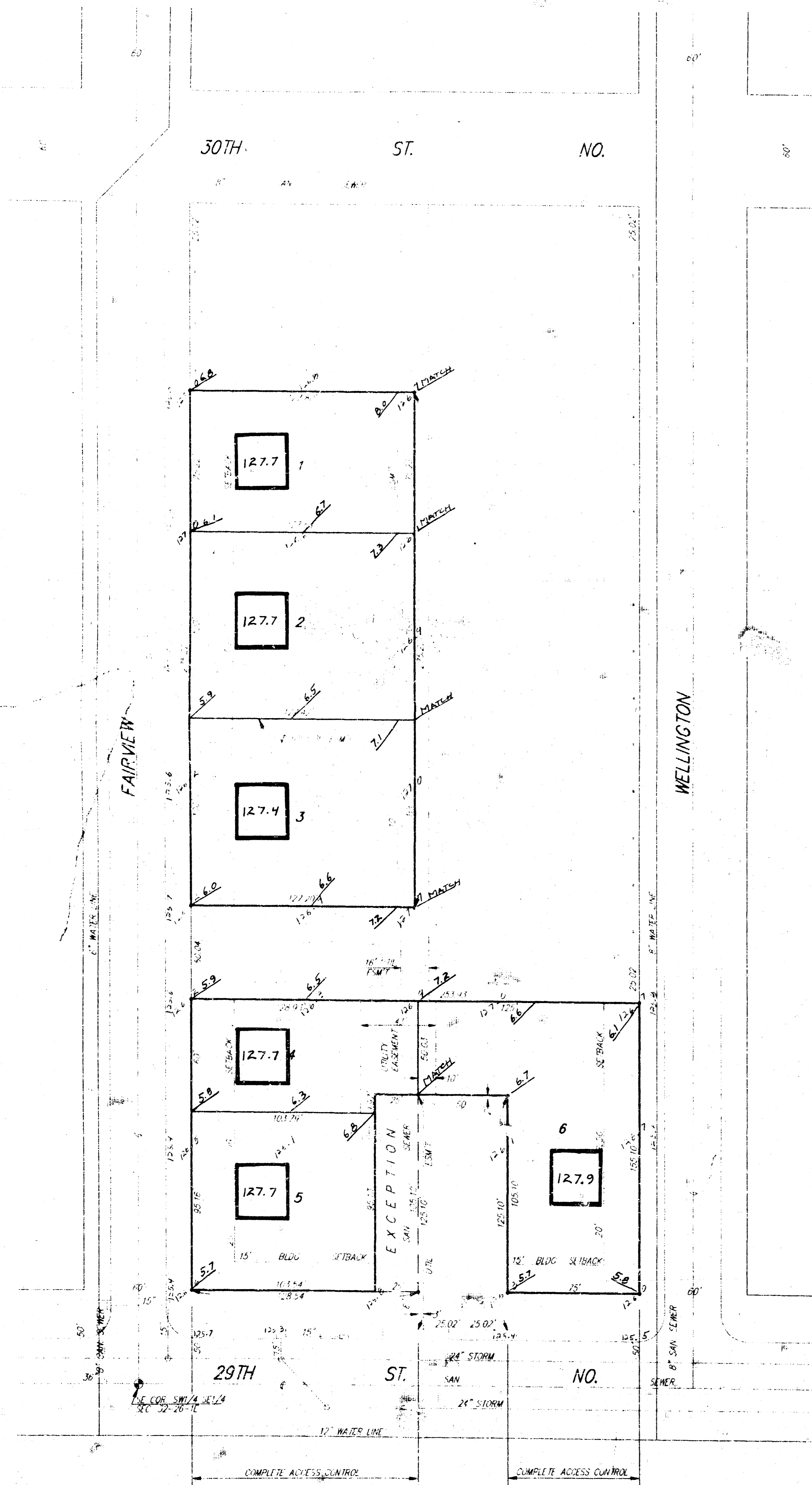
# SKETCH PLAT TRACHTMAN 2ND ADDITION

WICHITA, SEDGWICK COUNTY, KANSAS

LOTS 2 AND 3, TRACHTMAN ADDITION  
BERNARD H. TRACHTMAN  
& ELMENY TRACHTMAN

MINORITE FUNDING REHABILITATION  
SERVISE, INC.

THOMAS A. BISHOP, PRESIDENT  
2149 N. DUKAKA  
WICHITA, KANSAS 67214  
TEL. 265-7558



**Lot Grading Plan**  
Oct. 26, 93

Scale: 1" = 40'  
E.M. Top Run in  
Thru - E. 20' &  
E. 10' = 10' 1/2"



