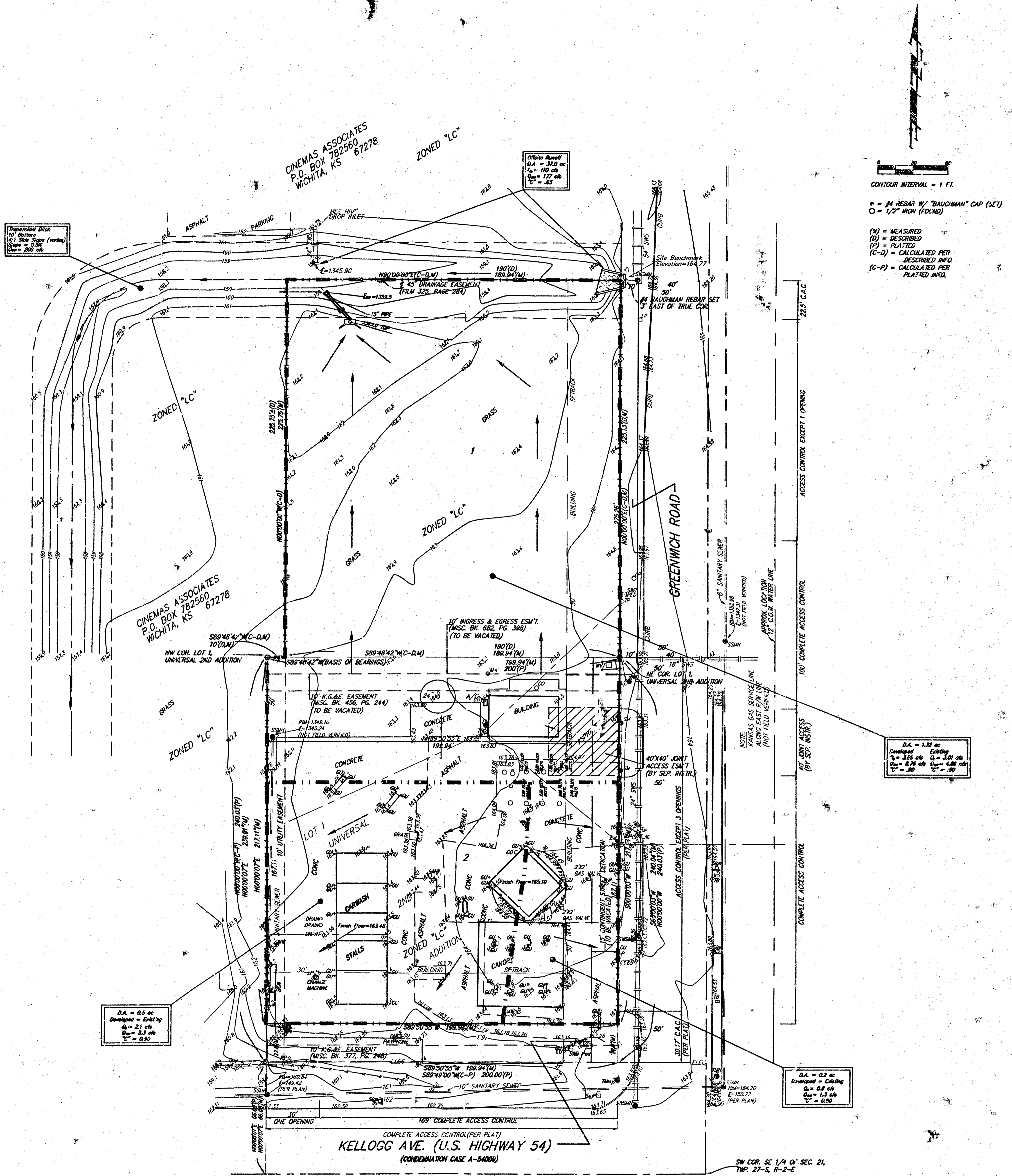


DRAINAGE PLAN

UNIVERSAL 4TH ADDITION

WICHITA, SEDGWICK COUNTY, KANSAS



↑

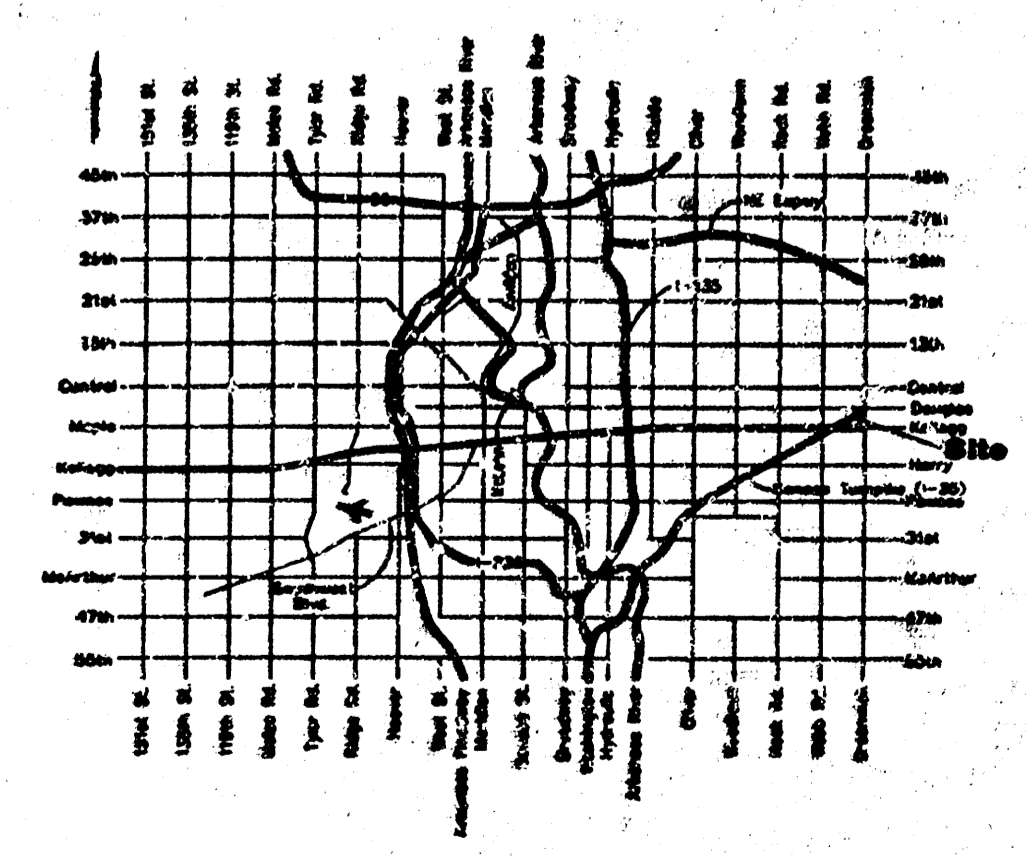
CONTOUR INTERVAL = 1 FT.

• = #4 REBAR W/ "BAUGHMAN" CAP (SET)
 ○ = 1/2" IRON (10.10)

(M) = MEASURED
 (D) = DESCRIBED
 (P) = PLATTED
 (C-D) = CALCULATED PER DESCRIBED INFO.
 (C-P) = CALCULATED PER PLATTED INFO.

LEGEND

- EM = Electric Meter
 - PP = Power Pole
 - SP = Signal Pole
 - TM = Traffic Manhole
 - SB = SOUTHWESTERN BELL PEDESTAL
 - TP = TELEPHONE POLE
 - WV = WATER VAULT
 - WM = WATER METER
 - GM = GAS METER
 - SC = SAN. SEWER CLEANOUT
 - SM = SAN. SEWER MANHOLE
 - SW = STORM WATER SEWER MANHOLE
 - LP = LIGHT POLE
 - MP = MONITORING WELL
 - CP = GUARD POST
 - EM = ELECTRIC METER
- WATER LINE
 — SANITARY SEWER LINE
 — STORM SEWER LINE



MINIMUM BUILDING PAD ELEVATIONS FOR LOWEST OPENING TO THE STRUCTURES

| LOT | ELEVATION |
|-----|-----------|
| 1,2 | 162.6 |

BENCHMARK:
 [] OUT ON TOP OF HEADWALL NEAR NE COR. OF LOT 1, UNIVERSAL 4TH ADDITION, WICHITA, SEDGWICK COUNTY, KANSAS.
 ELEV. = 164.77 CITY DATUM (1352:17 NGVD)

NOTE: COMPLETE ACCESS CONTROL SHALL REMAIN ALONG KELLOGG AVE. UNTIL HIGHWAY HAS BEEN IMPROVED TO FREEWAY STANDARD; AND THE FRONTAGE IS CONSTRUCTED.