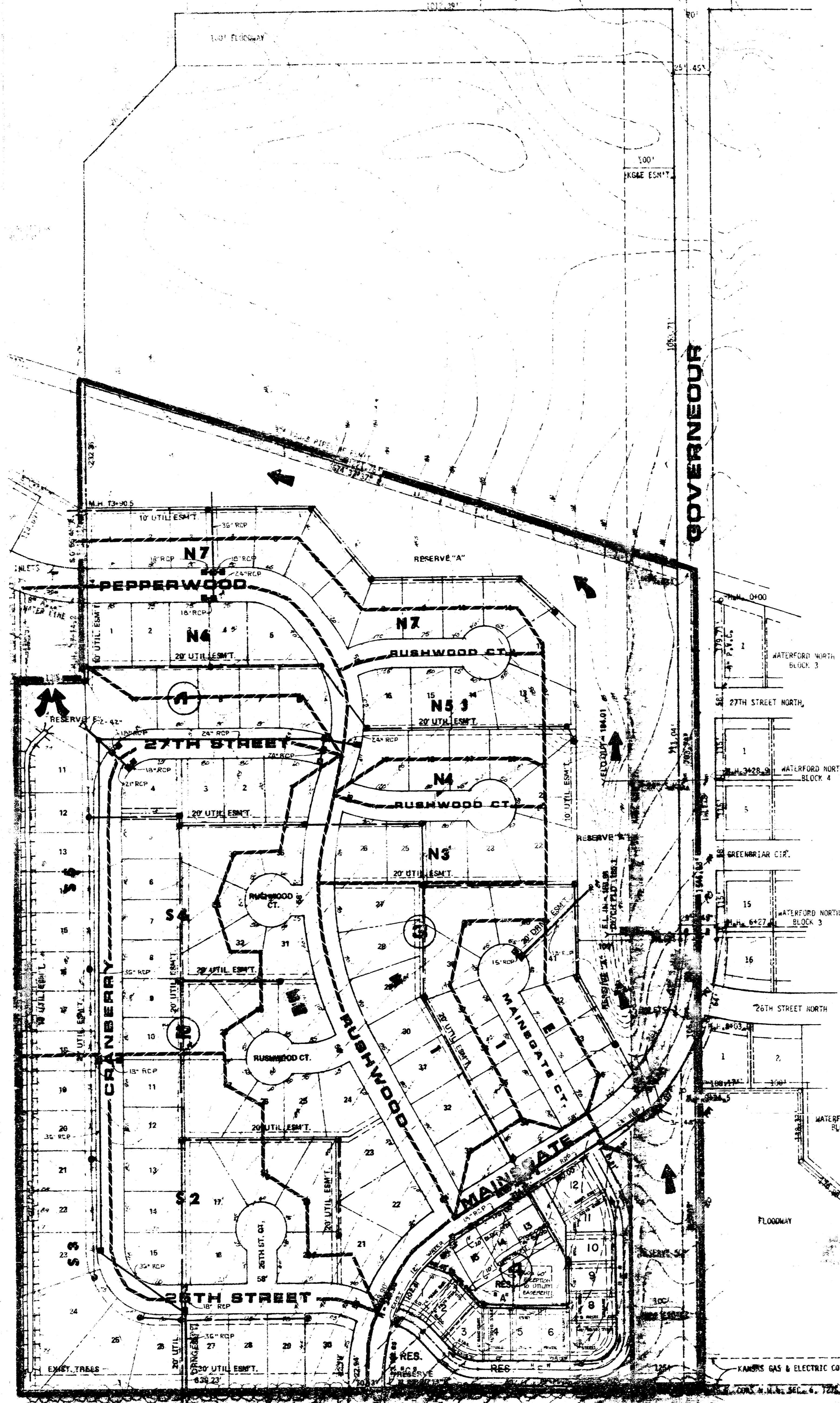


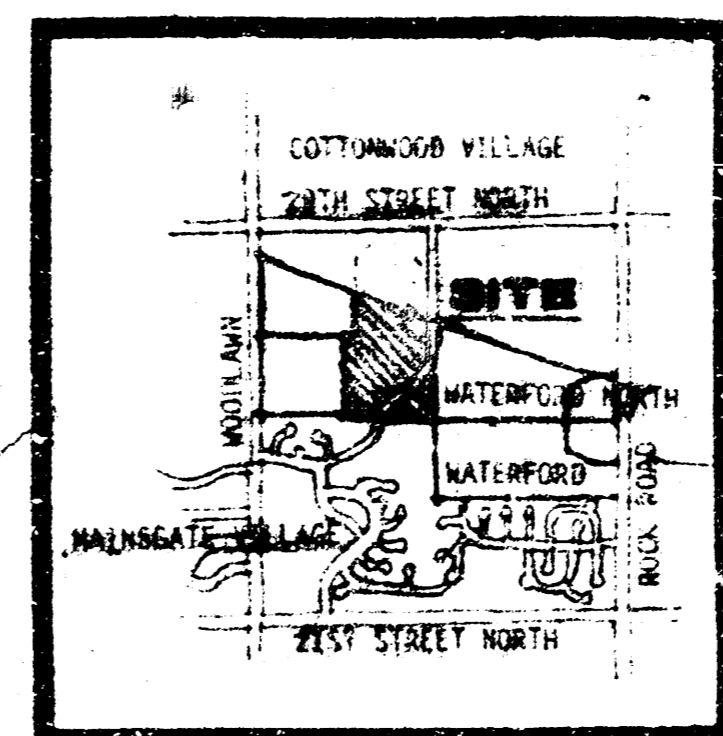
29TH STREET NORTH

GOVERNEUR



**EXISTING SANITARY SEWER**

M.H. 0400 TOP ELEV. 496.22 F.L. 120.31  
 M.H. 3428.9 TOP ELEV. 492.4 F.L. 182.12  
 M.H. 0427.7 TOP ELEV. 492.4 F.L. 181.21  
 M.H. 0402.0 TOP ELEV. 492.8 F.L. 184.37  
 M.H. 0428.5 TOP ELEV. 494.8 F.L. 184.70  
 M.H. 2114 TOP ELEV. 496.6 F.L. 186.06 OUT 186.06 IN  
 M.H. 3447.2 TOP ELEV. 496.0 F.L. 187.6  
 M.H. 2087 TOP ELEV. 472.5 F.L. 163.88 IN 167.78 OUT  
 M.H. 2082.5 TOP ELEV. 472.5 F.L. 163.88 IN 167.78 OUT  
 M.H. 1244.9 TOP ELEV. 475.4 F.L. 166.00 IN 165.99 OUT  
 M.H. 1714.2 TOP ELEV. 476.8 F.L. 167.28 IN 167.39 OUT  
 M.H. 1854.7 TOP ELEV. 476.8 F.L. 168.05 IN 168.05 OUT



LOCATION MAP

NOTE: SETBACKS ARE AS PER CITY ORDINANCES  
 GENERAL PROVISIONS MAP 501  
 RESERVES ARE FOR DRAINAGE UTILITIES, OPEN SPACE, RECREATION AND LANDSCAPING



**VILLAGE AT WATERFORD NORTH THIRD ADDITION**

**DRAINAGE PLAN**

REVISED - April 24, 1989

**MID-KANSAS ENGINEERING CONSULTANTS PA**  
 3500 NORTH ROCK ROAD  
 BUILDING 4800  
 WICHITA, KANSAS 67226  
 636-5566