

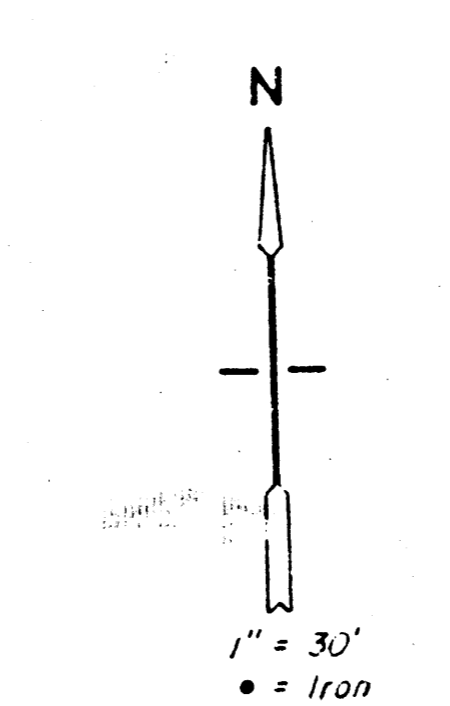
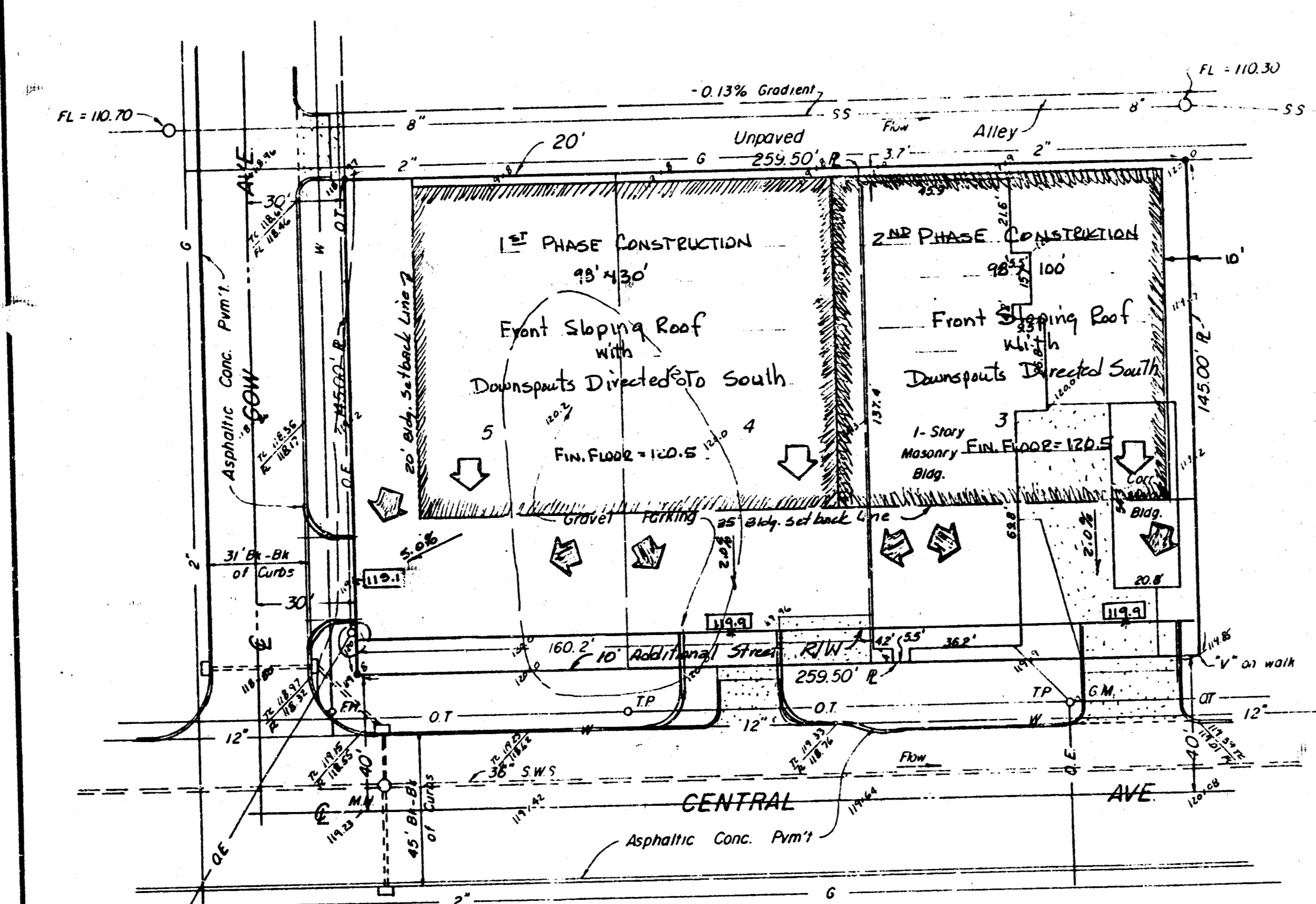
JOHN WEITZEL ADDITION
(Drainage)

JOHN WEITZEL ADDITION

Vicinity Map

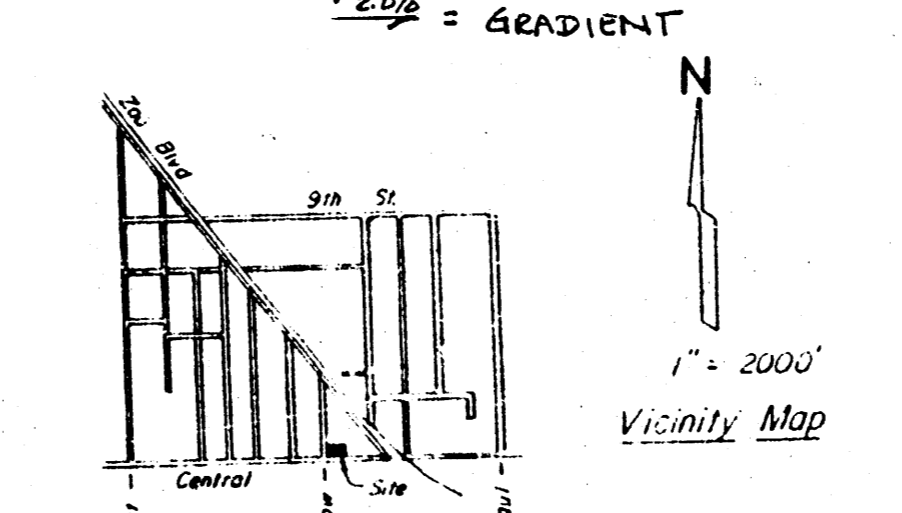
Lots 3, 4 & 5, DAVIS GARDENS,
Sedgwick County, Kansas.

- DRAINAGE CONCEPT -



- Legend -
- W = Water Main
 - FH = Fire Hydrant
 - G = Gas Main
 - G.M. = Gas Meter
 - T.P. = Telephone Pole
 - O.T. = Overhead Telephone
 - O.E. = Overhead Electric
 - S.S. = Sanitary Sewer
 - S.W.S. = Storm Water Sewer
 - R = Property Line

- 118.9 = Proposed Finished Grade Elev.
- 119.1 = Existing Grade
- = Direction of Flow
- 0.06 = Gradient



NOTE - DRAINAGE FROM FUTURE ROOF AND PAVED AREAS TO BE DIRECTED TO CENTRAL AND GAN, VIA DRAIN OPENINGS, FLUMES OR OTHER APPROVED OPENINGS

Moehring & Associates
Consulting Engineers
Wichita
Sept 11, 1986

