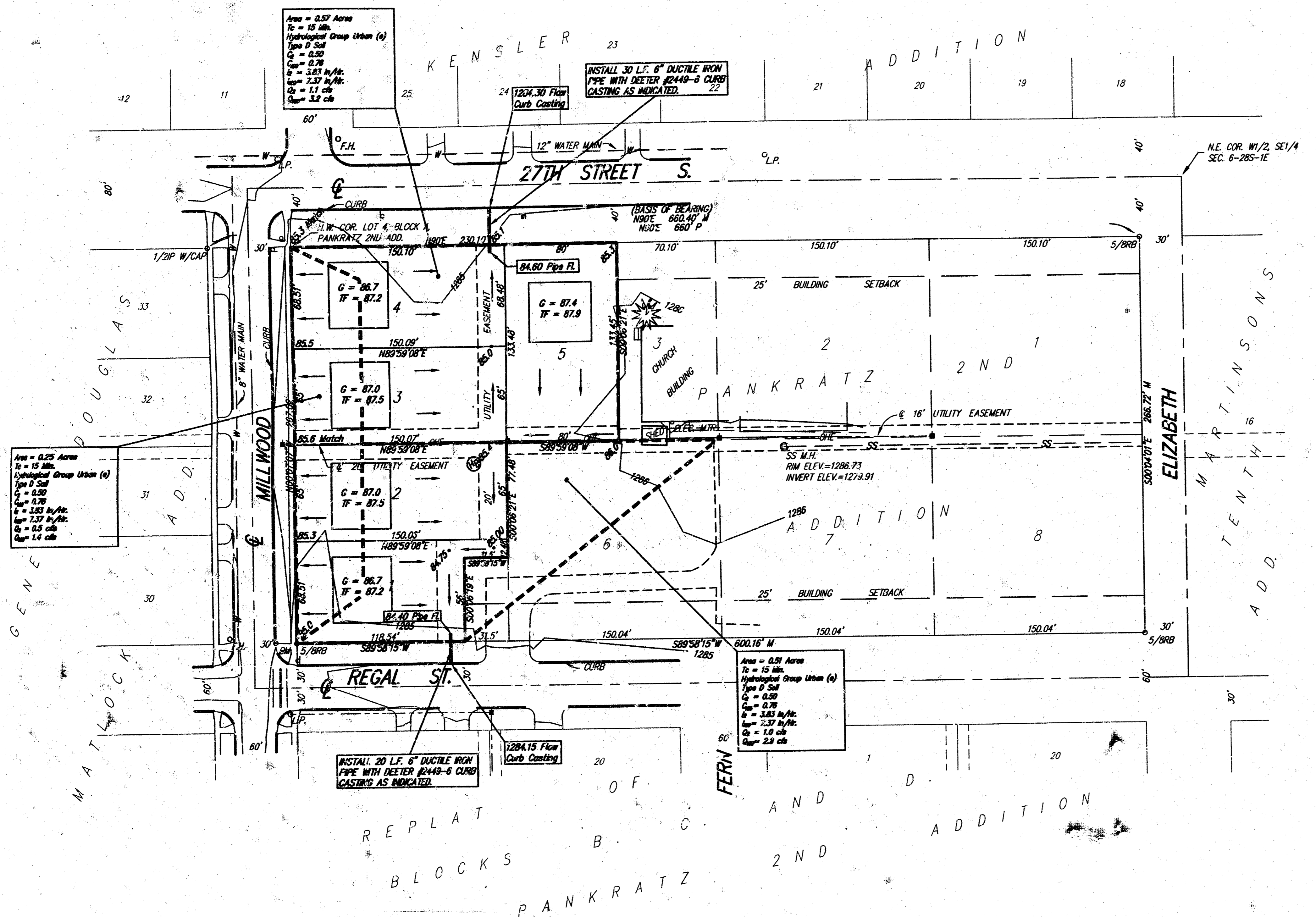


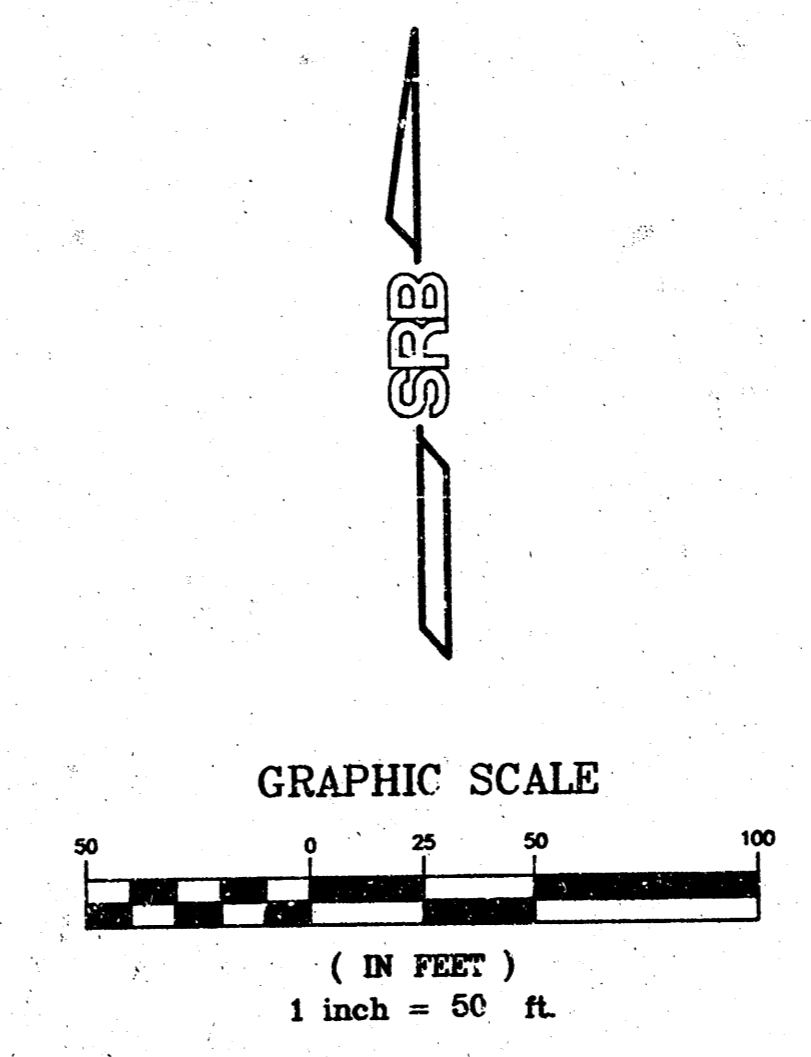
# DRAINAGE AND GRADING PLAN W. H. H. ADDITION WICHITA, SEDGWICK COUNTY, KANSAS



**DESCRIPTION:**

The west 80 feet of Lot 3, all of Lot 4, and Lot 5 except the east 31.5 feet of the south 56 feet thereof, Block A, Pankratz 2nd Addition, Sedgwick County, Kansas.

**OWNER:**  
Southwest Presbyterian Church  
1511 W. 27TH ST. S.  
Wichita, Kansas 67217  
Ph. 322-6072



**GROSS SIZE:**  
48,981.13 Sq. Ft.±  
1.12 Acres±

**MINIMUM LOT SIZE:**  
8,513.58 Sq. Ft.±  
0.20 Acres±

BENCH MARK: CITY OF WICHITA STD. DISC.  
S.W. COR. TRAFFIC SIGNAL BASE @ N.E. COR.  
INTERSECTION JUST ST. S & SENECA.  
ELEV.=1283.22 N.G.V.D.

ON SITE B.M.: "C" CUT ON TOP OF CURB  
N. CURB RETURN @ N.E. COR. INTERSECTION  
OF MILLWOOD & REGAL ST.  
ELEV.=1284.73 N.G.V.D.

<b>DRAINAGE AND GRADING PLAN W. H. H. ADDITION</b>					
<b>SRB</b>		924 NORTH MAIN WICHITA, KANSAS 67203 www.srb1.com		316-264-8008 FAX 264-4621 E-mail: srb@srb1.com	
<b>SAVOY, RUGGLES &amp; BOHM, P. A.</b> ENGINEERING & SURVEYING					
PROJECT NUMBER					
DESIGN	DRAWN	UTILITY	REVIEW	DATE	REVISED
C. Bohm	C. Bohm	C. Bohm	C. Bohm	02-27-2001	06-26-2001
					SHEET 4 OF 4