

**WOODGATE FILE**

DEC 8 1972  
 20016  
 DRAINAGE EASEMENT  
 BOOK 41 PAGE 114

THIS EASEMENT, made this 15th day of November, 1972, by and between GEO. H. BRUCE of the first part and GOLD CROWN, INC., of the second part.

WITNESSETH:

That the said first party, in consideration of the sum of One Dollar (\$1.00) and other valuable consideration the receipt whereof is hereby acknowledged, the undersigned, Geo. H. Bruce, being the owner of the following described real estate in Sedgwick County, Kansas, to-wit:

The East 70 feet of the North Half of the East Half of the Southeast Quarter of the Southwest Quarter (N/2 E/2 SE/4 SW/4) of Section 1, Township 27 South, Range 1 East,

does hereby grant and convey unto the said second party a personal right-of-way and easement for the purpose of constructing, maintaining and repairing drainage system for handling drainage of surface water from the adjacent area being platted as Woodgate Addition to the City of Wichita, Sedgwick County, Kansas.

And said second party is hereby granted the right to enter upon said premises at any time for the purpose of constructing, operating, maintaining and repairing such drainage system.

IN WITNESS WHEREOF, the said first party has signed these presents the day and year first written.

*GEO. H. BRUCE*  
 GEO. H. BRUCE

STATE OF KANSAS )  
 ) SS:  
 COUNTY OF SEDGWICK )

Personally appeared before me, a Notary Public in and for the County and State aforesaid, Geo. H. Bruce, to me personally known to be the same person who executed the foregoing instrument of writing and said person duly acknowledged that execution thereof.

NOTARIZED at Wichita, Kansas, this 15th day of November, 1972.

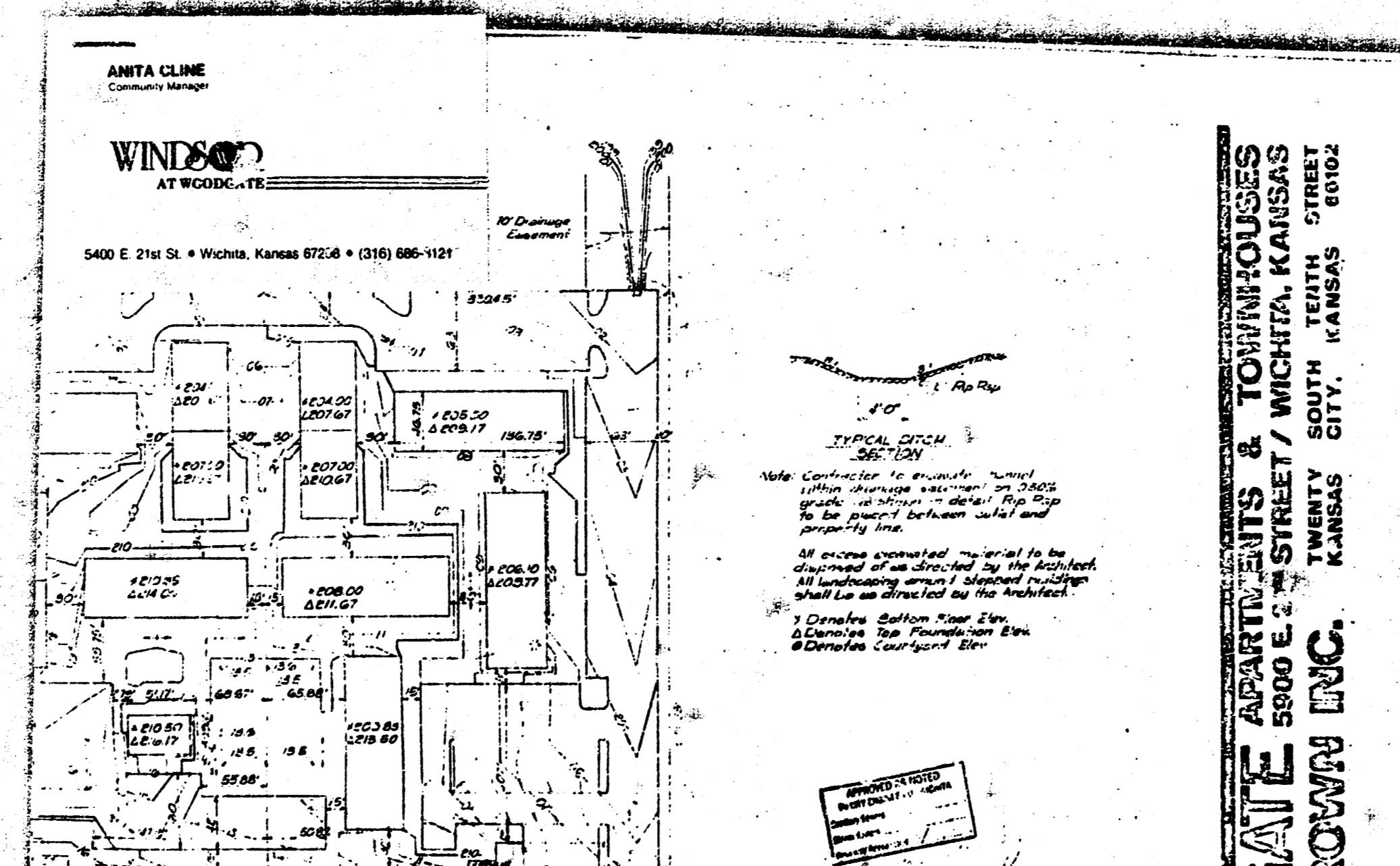
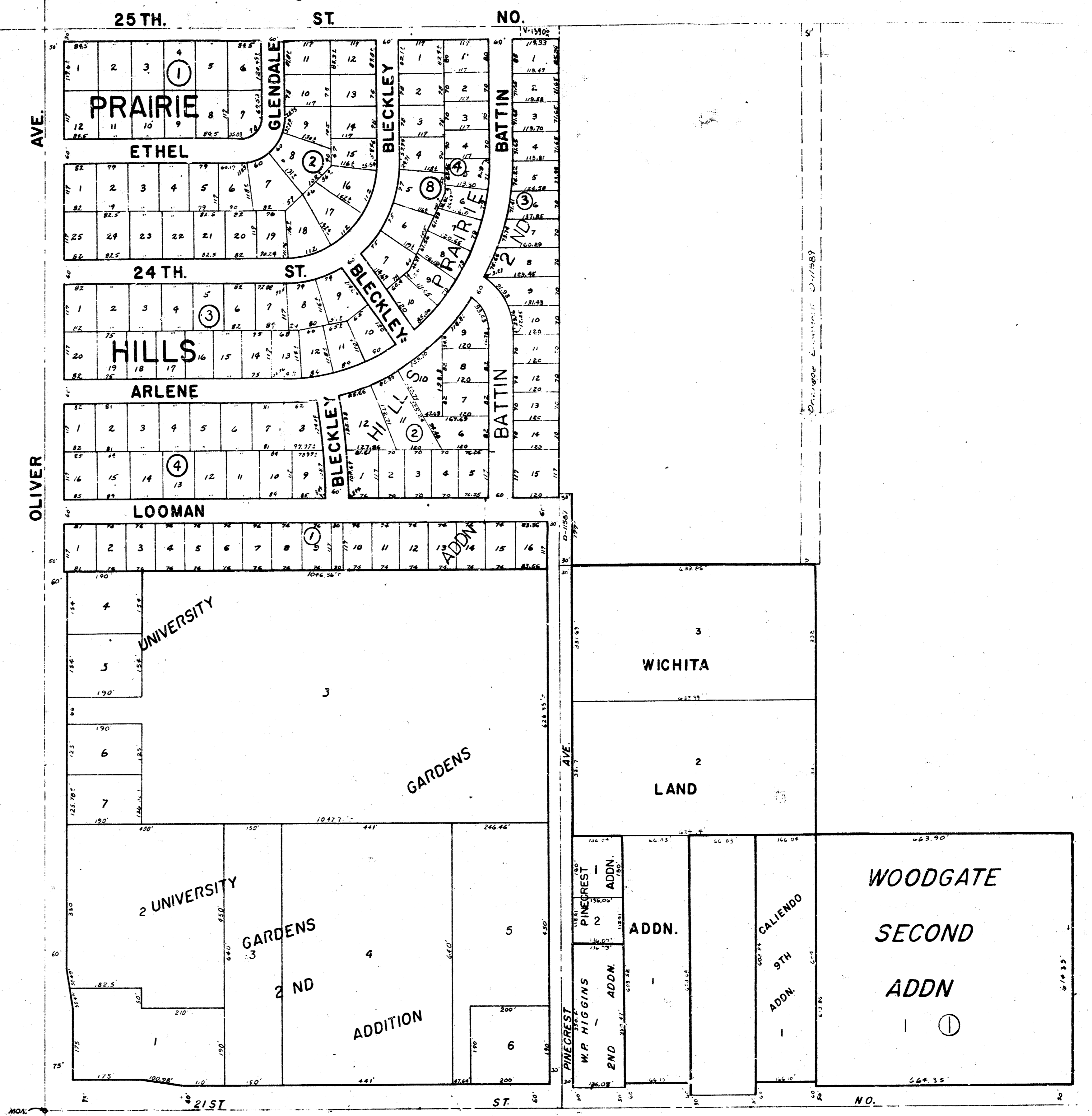
My commission expires: June 24, 1975

*Key Foster*  
 Key Foster, Notary Public

DEC 8 1972

11-35

S.W. 1/4 SEC. 1, TWP. 27S; R. 1-E.



SAFE APARTMENTS & TOWNHOUSES  
 5400 E. 21st St. / WICHITA, KANSAS  
 TWENTY SOUTH STREET  
 WICHITA, KANSAS  
 GOLD CROWN INC.

### WICHITA LAND ADDITION

WICHITA, SEDGWICK COUNTY, KANSAS

State of Kansas, County of Sedgwick, SS:  
 I, *Alvin M. Smith*, Mayor of the City of Wichita, Kansas, do hereby certify that the foregoing plat of the Wichita Land Addition, Sedgwick County, Kansas, is a true and correct copy of the original as filed in the office of the Secretary of State of Kansas, at Topeka, Kansas, on the 15th day of November, 1972, and that the same is a true and correct copy of the original as filed in the office of the Secretary of State of Kansas, at Topeka, Kansas, on the 15th day of November, 1972, and that the same is a true and correct copy of the original as filed in the office of the Secretary of State of Kansas, at Topeka, Kansas, on the 15th day of November, 1972.

My commission expires: *Alvin M. Smith*

This plat of "Wichita Land Addition", Wichita, Sedgwick County, Kansas, has been approved and authorized by the Board of Commissioners of the City of Wichita, Kansas, on the 15th day of November, 1972.

This plat approved and all indications shown herein, as set forth, approved by the Board of Commissioners of the City of Wichita, Kansas, on the 15th day of November, 1972.