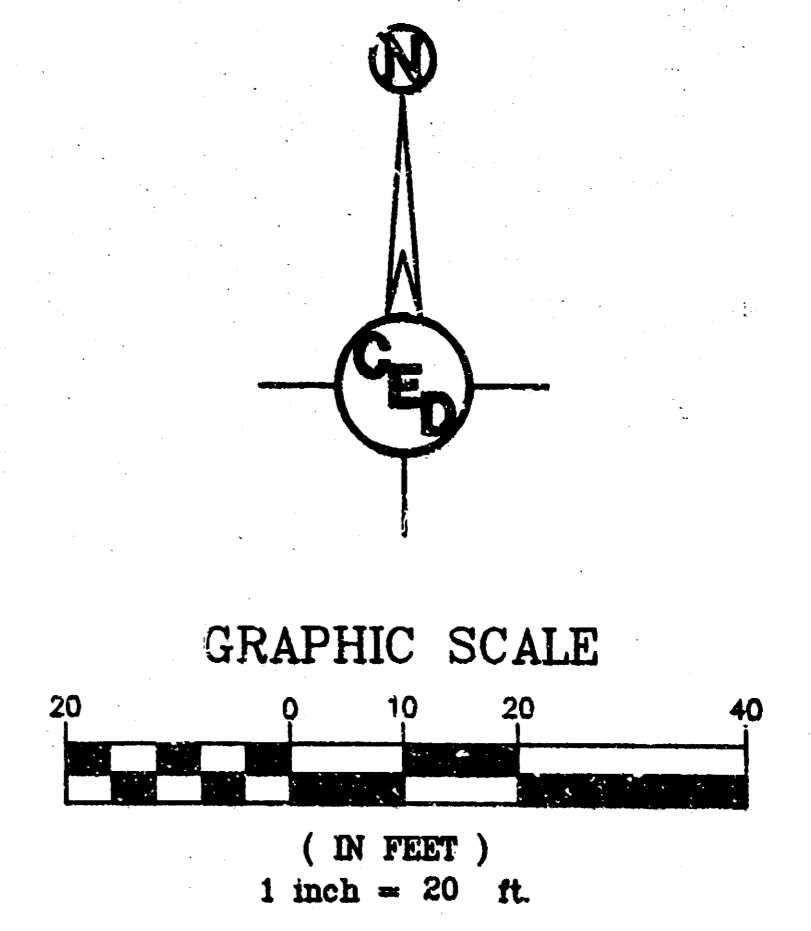
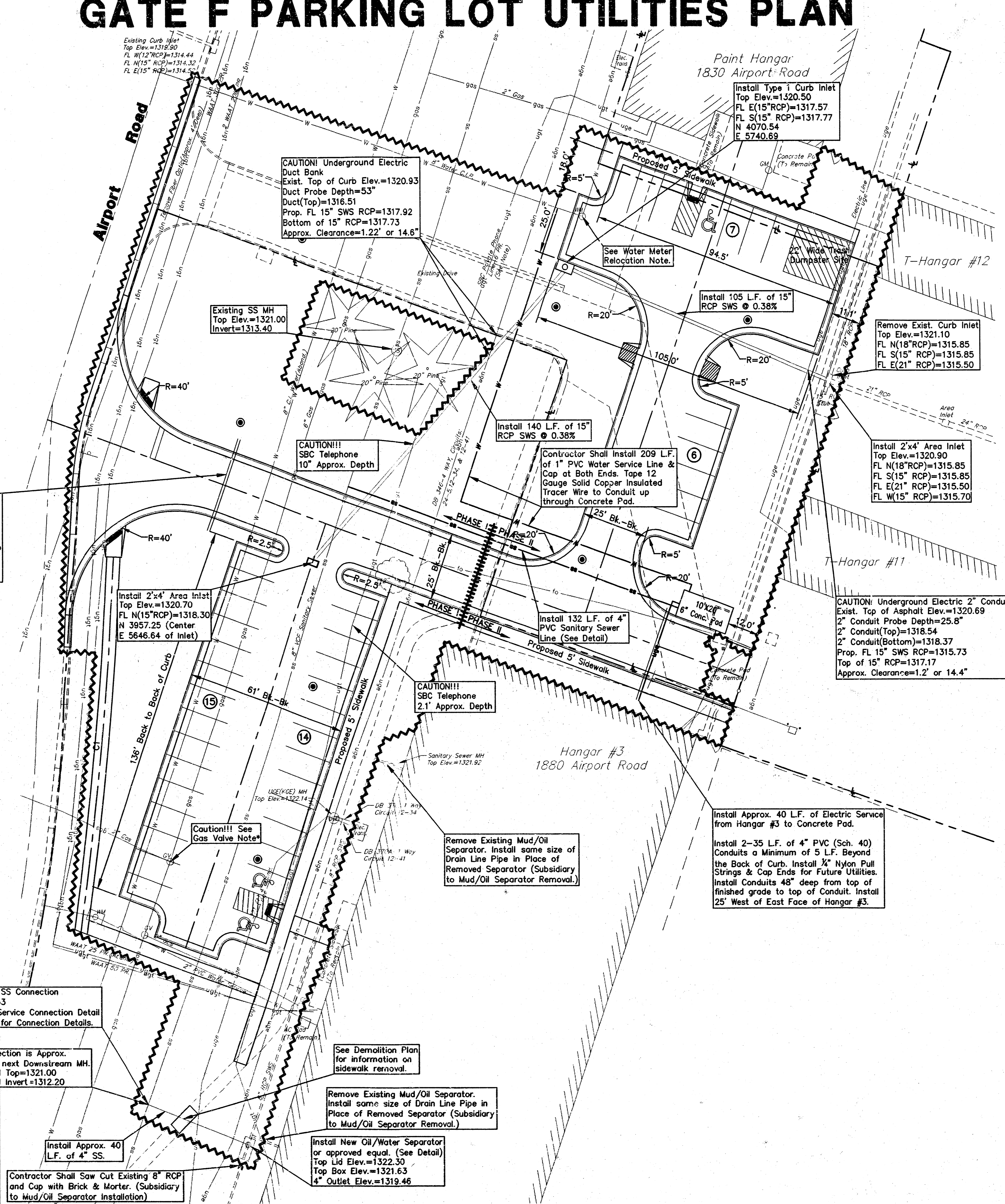
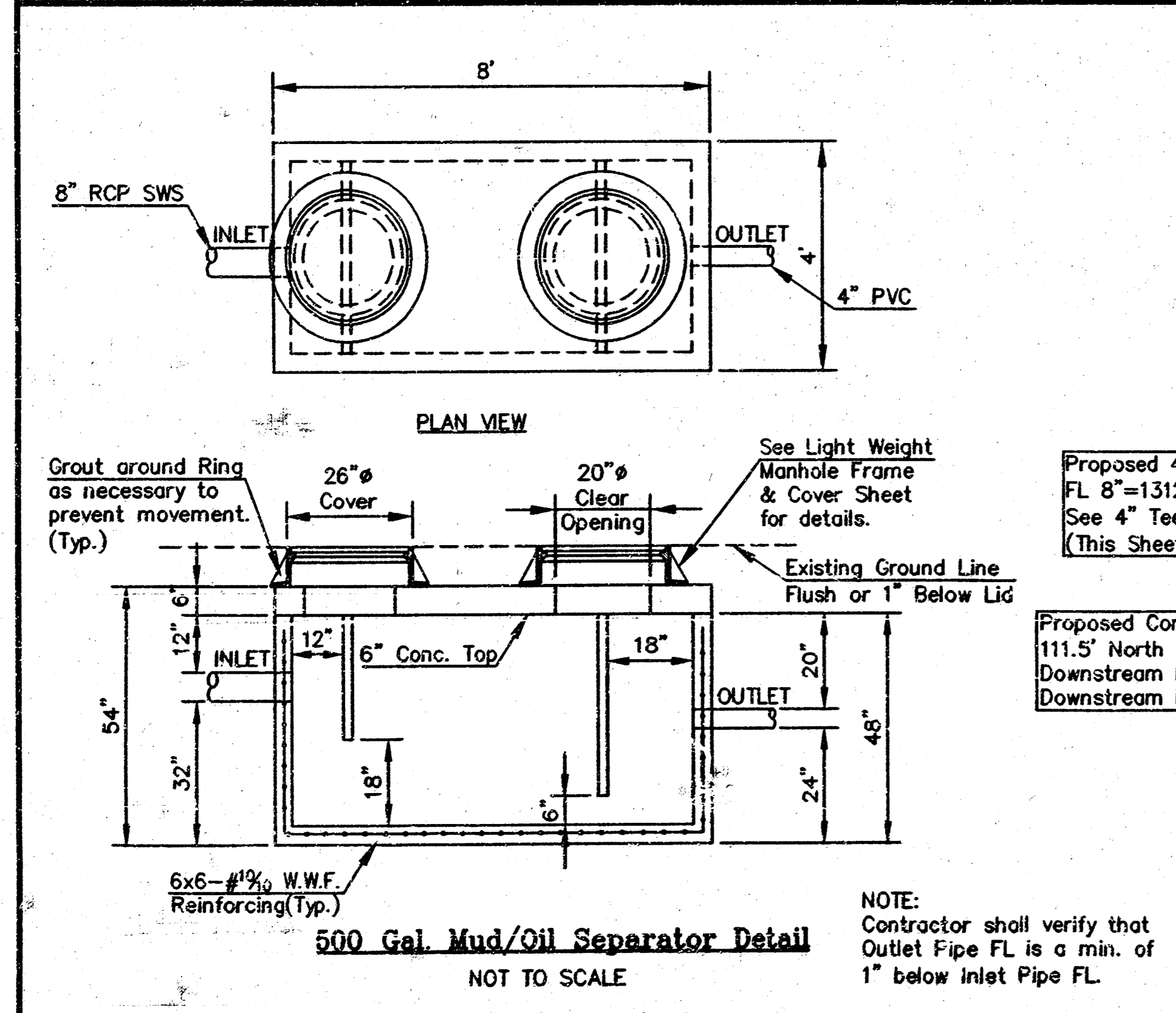
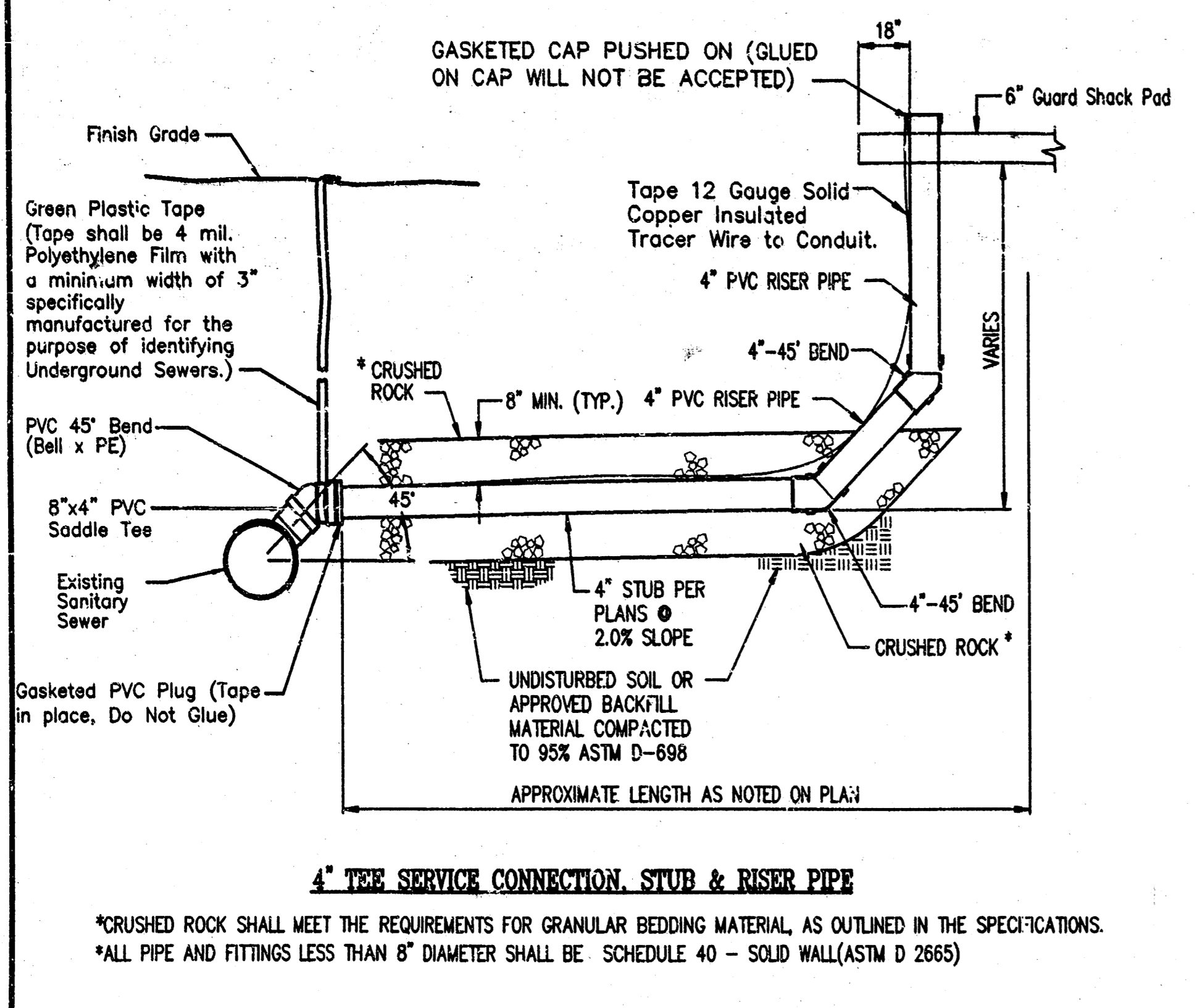


GATE F PARKING LOT UTILITIES PLAN



UTILITY LEGEND

○	= Catv Box	○	= Sign
○	= Fire Hydrant	○	= San. Sewer Manhole
○	= Guard Post	○	= Storm Sewer Manhole
○	= Guy Anchor	○	= Telephone Riser
○	= Guy Pole	○	= Water Meter
○	= Light Pole	○	= Water Valve
○	= Electric Riser	○	= Gas Meter
○	= Utility Pole	○	= Gas Valve
○	= Bore Location	○	= Gas Valve
○		○	= Flight Safety(Fiber Optic Cable)
○		○	= Fiber Optic(Gate F Controller)
○		○	= Gas Line
○		○	= Overhead Electric
○		○	= Underground Electric
○		○	= SBC-Underground Telephone
○		○	= Underground Telephone
○		○	= Waterline
○		○	= Sanitary Sewer Line
○		○	= Construction Limits

NOTE: There was no response by SBC to Kansas One-Call Ticket #3449462 called in on December 17, 2003.

W.A.A. flagged SBC's Telephone Line while flagging their own Utilities.

WATER METER RELOCATION NOTE:
Existing 1" Water Meter for Paint Hangar will be Relocated by the City of Wichita Water Dept. Contractor will be responsible for coordinating with City on Meter Relocation.

GAS VALVE NOTE*
Contractor Shall Construct Pavement over Gas Meter.
Contact Charlene Lawless w/ KGS Prior to Construction of Parking Lot (932-3121).

SUMMARY OF UTILITY QUANTITIES

TYPE	UNITS	QUANTITY
15" RCP SWS	L.F.	245
Type 1 Curb Inlet	Each	1
2"x4" Area Inlet	Each	2
4" PVC Utility Conduit	L.F.	140
Oil-Water Separator(Remove)	Each	2
New Oil-Water Separator	Each	1
4" PVC SS Line	L.F.	172
4" Tee Service Connection	Each	2
1" PVC Water Service Line	L.F.	209
1" PVC Caps	Each	2
1" Water Meter Relocation	Each	1

UTILITIES SHOWN REPRESENT THE BEST INFORMATION AVAILABLE FOR DESIGN. ADDITIONAL UTILITIES MAY BE PRESENT ON THIS PROJECT. THE CONTRACTOR SHALL BE RESPONSIBLE FOR DETERMINING THE EXACT LOCATION, DEPTH AND SIZE OF ALL UNDERGROUND UTILITIES PRIOR TO CONSTRUCTION. THE CONTRACTOR SHALL BE LIABLE FOR ANY DAMAGE CAUSED BY THE FAILURE TO DO SO.

UTILITIES PLAN FOR
SECURITY GATE F PARKING LOT
WICHITA MID-CONTINENT AIRPORT, WICHITA, KANSAS
CED PROJ. NO.: 20031083
CERTIFIED ENGINEERING DESIGN, P.A.
810 WEST DOUGLAS, SUITE C
WICHITA, KANSAS 67203
PH.(316)262-8808 FAX.(316)262-1669

DESIGNED: HJF	SCALE: 1"=20'	SHEET
DRAWN: CKW	DATE: 4/04	12
CHECKED: HDF	CED FILE: Gate-C-Base	TOTAL 46