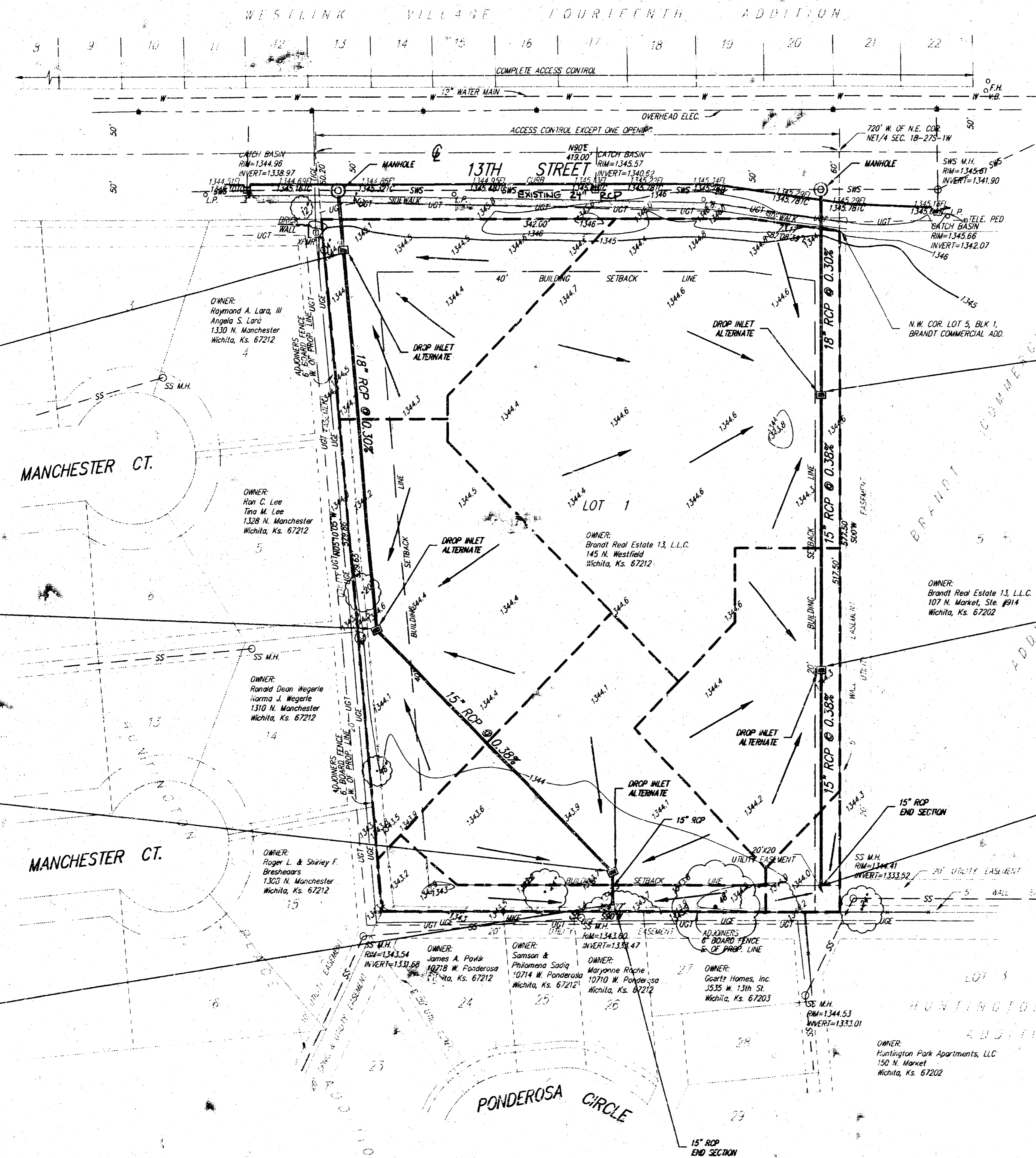


# DRAINAGE PLAN WICHITA RETIREMENT RESIDENCE ADDITION

WICHITA, SEDGWICK COUNTY, KANSAS



**LEGAL DESCRIPTION:**

The north 35 rods of the east 68 3/4 rods of the Northeast Quarter of Section 18, Township 27 South, Range 1 West of the Sixth Principal Meridian, Sedgwick County, Kansas, except that part platted as Brandt Commercial Addition, Wichita, Sedgwick County, Kansas.

**OWNER:**

Brandt Real Estate 13, L.L.C.  
145 N. Westfield  
Wichita, Ks. 67212

**GROSS SIZE:**

226,892.70 Sq. Ft. ±  
5.209 Acres ±

**NET SIZE:**

205,693.51 Sq. Ft. ±  
4.722 Acres ±

Drainage Area = 0.53 Ac.  
Hydrologic Soil Type "C"  
 $T_c = 15 \text{ min.}$   
 $C_s = 0.66$   
 $C_{100} = 0.79$   
 $I_s = 4.56 \text{ in.}$   
 $I_{100} = 7.37 \text{ in.}$   
 $Q_s = 1.6 \text{ cfs}$   
 $Q_{100} = 3.1 \text{ cfs}$

Drainage Area = 1.71 Ac.  
Hydrologic Soil Type "C"  
 $T_c = 15 \text{ min.}$   
 $C_s = 0.66$   
 $C_{100} = 0.79$   
 $I_s = 4.56 \text{ in.}$   
 $I_{100} = 7.37 \text{ in.}$   
 $Q_s = 5.1 \text{ cfs}$   
 $Q_{100} = 10.0 \text{ cfs}$

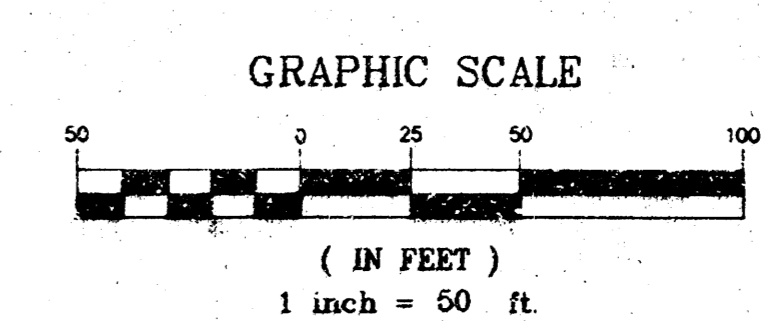
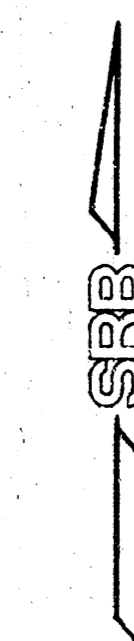
Drainage Area = 0.91 Ac.  
Hydrologic Soil Type "C"  
 $T_c = 15 \text{ min.}$   
 $C_s = 0.66$   
 $C_{100} = 0.79$   
 $I_s = 4.56 \text{ in.}$   
 $I_{100} = 7.37 \text{ in.}$   
 $Q_s = 2.7 \text{ cfs}$   
 $Q_{100} = 5.3 \text{ cfs}$

Drainage Area = 0.57 Ac.  
Hydrologic Soil Type "C"  
 $T_c = 15 \text{ min.}$   
 $C_s = 0.66$   
 $C_{100} = 0.79$   
 $I_s = 4.56 \text{ in.}$   
 $I_{100} = 7.37 \text{ in.}$   
 $Q_s = 1.7 \text{ cfs}$   
 $Q_{100} = 3.3 \text{ cfs}$

Drainage Area = 0.73 Ac.  
Hydrologic Soil Type "C"  
 $T_c = 15 \text{ min.}$   
 $C_s = 0.66$   
 $C_{100} = 0.79$   
 $I_s = 4.56 \text{ in.}$   
 $I_{100} = 7.37 \text{ in.}$   
 $Q_s = 2.2 \text{ cfs}$   
 $Q_{100} = 4.3 \text{ cfs}$

Drainage Area = 0.08 Ac.  
Hydrologic Soil Type "C"  
 $T_c = 15 \text{ min.}$   
 $C_s = 0.66$   
 $C_{100} = 0.79$   
 $I_s = 4.56 \text{ in.}$   
 $I_{100} = 7.37 \text{ in.}$   
 $Q_s = 0.2 \text{ cfs}$   
 $Q_{100} = 0.5 \text{ cfs}$

Drainage Area = 0.17 Ac.  
Hydrologic Soil Type "C"  
 $T_c = 15 \text{ min.}$   
 $C_s = 0.66$   
 $C_{100} = 0.79$   
 $I_s = 4.56 \text{ in.}$   
 $I_{100} = 7.37 \text{ in.}$   
 $Q_s = 0.5 \text{ cfs}$   
 $Q_{100} = 1.0 \text{ cfs}$



- LEGEND**
- SS = SANITARY SEWER
  - SWS = STORM WATER SEWER
  - UGE = UNDER GROUND ELECTRIC
  - UGT = UNDER GROUND TELEPHONE
  - TELE. PED. = TELEPHONE PEDISTAL
  - G.M. = GAS METER
  - W.M. = WATER METER
  - L.P. = LIGHT POLE
  - T.P. = TELEPHONE POLE
  - P.P. = POWER POLE
  - H.L.P. = HIGH LINE POLE
  - O.A. = OUT ANCHOR
  - E.T. = ELECTRIC TRANSFORMER
  - SIGN = SIGN
  - N.G.R. = NATURAL GAS REGULATOR
  - SWS M.H. = STORM WATER SEWER MANHOLE
  - SS M.H. = SANITARY SEWER MANHOLE

BENCH MARK: CITY OF WICHITA STANDARD DISC  
N.W. COR. OF INTERSECTION OF MAIZE R. & 13TH ST. N.  
108.5' N. & 75' W. OF INTERSECTION OF CENTERLINE OF BOTH  
ELEV. = 1343.42 NGVD

ON SITE B.M.: "1" CUT ON TOP OF CURB  
101.4' W. & 2.4' N. OF N.E. COR. OF LOT 1,  
WICHITA RETIREMENT RESIDENCE ADDITION.  
ELEV. = 1343.80 NGVD