

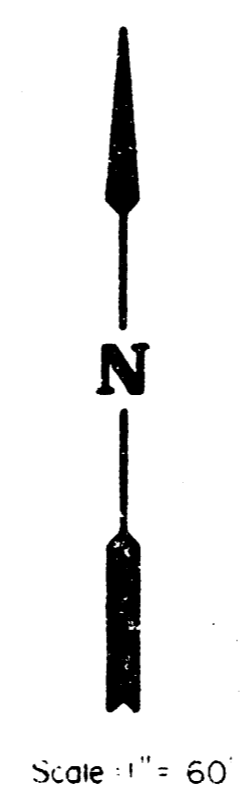
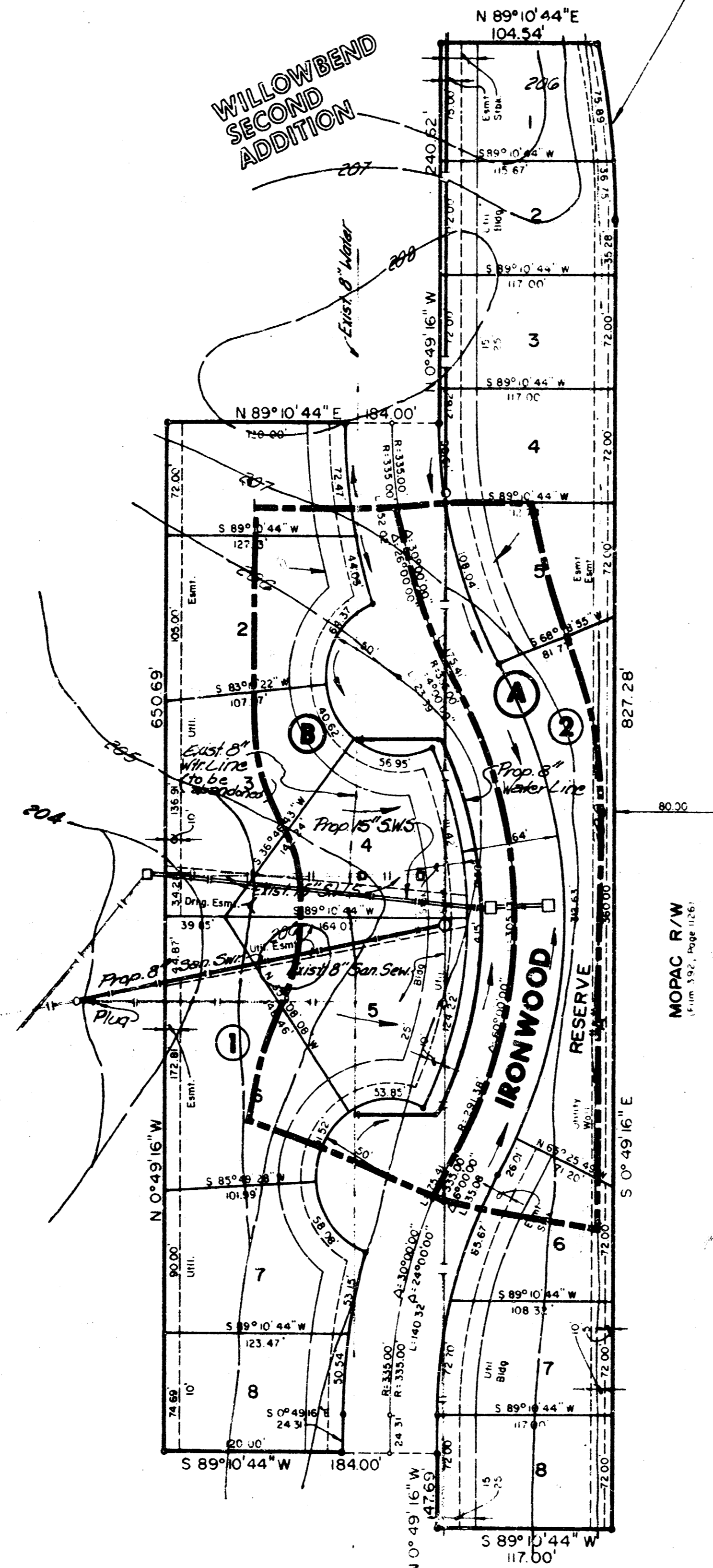
# DRAINAGE & UTILITY PLAN

## WILLOWBEND EIGHTH ADDITION

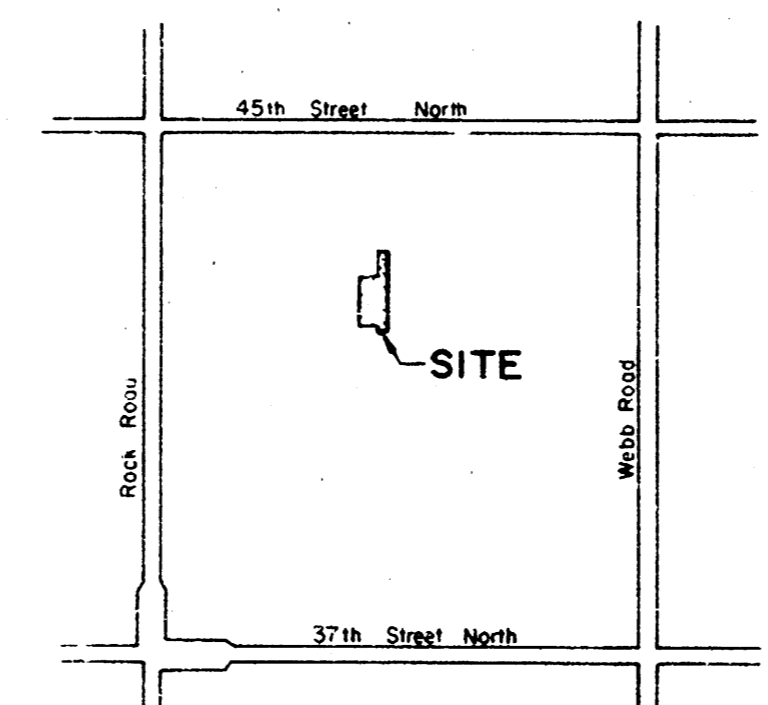
AN ADDITION TO WICHITA, SEDGWICK COUNTY, KANSAS  
DECEMBER, 1986

R = 50715'  
Δ = 12° 43' 33"  
L = 112.64'  
Bq = S 7° 11' 03" E  
Chd. = 112.41'

N. E. Cor., NW 1/4, Sec. 29  
T. 2 S., R. 2 E., 6th P.M.



WILLOWBEND EIGHTH	AREA (acres)	AREA ACCUM.	C <sub>2</sub>	C <sub>100</sub>	T <sub>c</sub> (min)	I <sub>2</sub> (in/hr)	I <sub>100</sub> (in/hr)	Q <sub>2</sub> (cfs)	Q <sub>100</sub> (cfs)	PIPE SIZE	PIPE SLOPE	INLETS
A	0.8		0.50	0.76	15	3.83	7.37	1.5	4.5	15"	0.44%	L <sub>1</sub> = 5'
B	1.3	2.1	0.50	0.76	15	3.83	7.37	2.5	7.3	15"	1.0%	L <sub>1</sub> = 5'



Approved:  
VRA 1/1/87

### LOCATION MAP

### BENCH MARKS

- B.M. # 1 "D" Cur On N.W. Corner RCB, 16' N. And 35' W. of Center Section 29-26-2E. Elev. = 208.19
- B.M. # 2 "D" Cur On N.W. Corner RCB Under R.R. Easterly of Lot 62, Block 2, Willow Bend Sec. 29. Elev. = 208.52

WILLOWBEND SECOND ADDITION

	<b>WILLOWBEND EIGHTH ADDITION</b>	
	<b>DRAINAGE &amp; UTILITY PLAN</b>	
MID-KANSAS ENGINEERING CONSULTANTS P.A. 3500 NORTH ROCK ROAD BUILDING 800 WICHITA, KANSAS 67226		682-6561