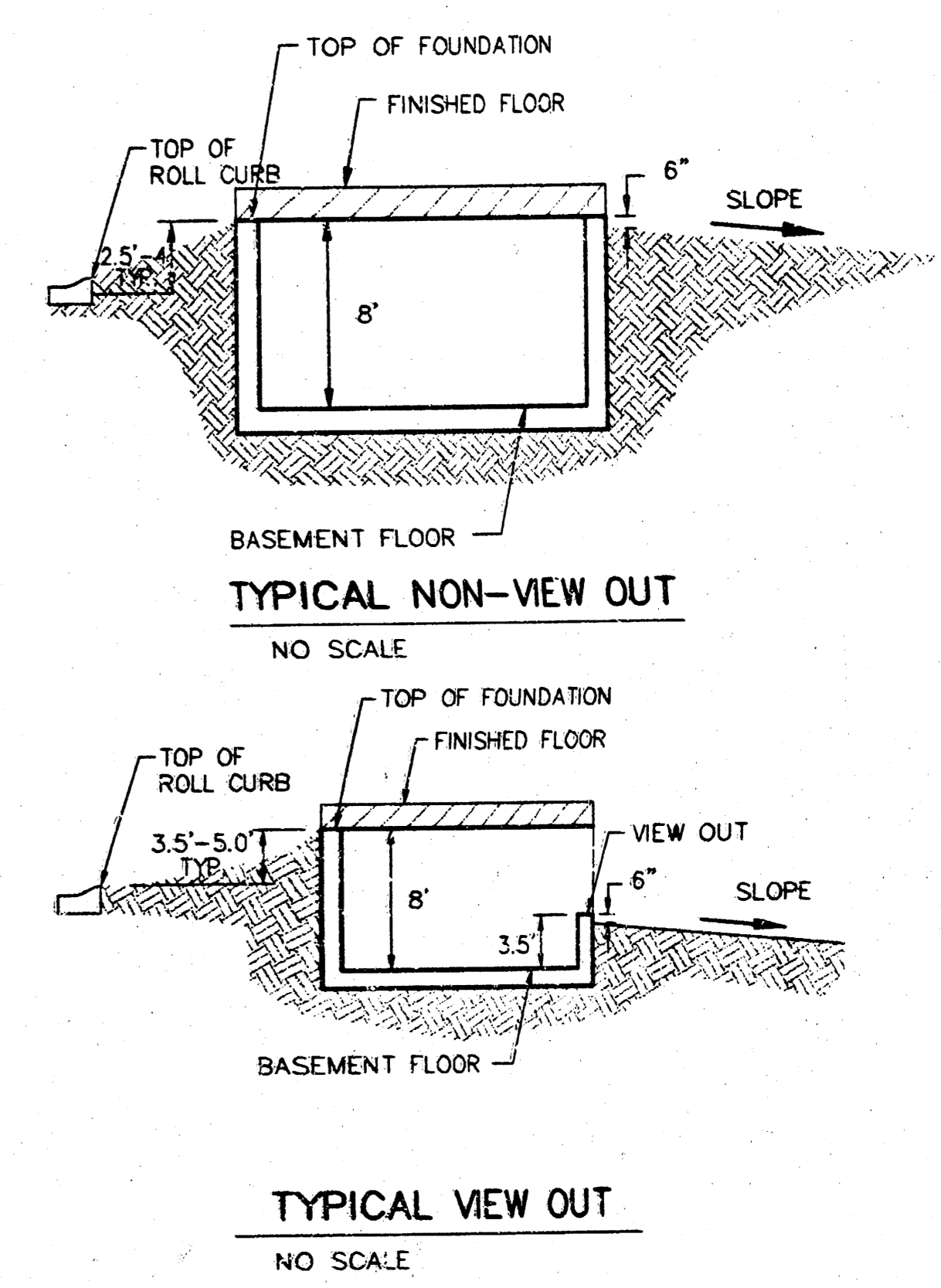


SCALE: 1" = 60'
 • = Iron

BENCHMARK:
 CITY OF WICHITA BENCHMARK DISC -
 SE COR. OF THE INTERSECTION OF TYLER RD. &
 29TH STREET NORTH
 32.30' S. OF &
 30.00' E. OF &
 55.50' E. OF P.P.
 9.20' SE. OF P.P.
 43.20' SE. OF SEC. COR. IRON
 ELEV. = 178.04 CITY DATUM
 1365.44 NGVD29



Notes:
 Proposed Top of Foundation Elevations Are Shown On Plans.
 Contractor to Set Finished Floor Elevations.
 All Street Elevations Shown on Plans are for Top of Curb.
 This Grading Plan is Designed with View-Outs.
 Elevations Shown at Rear of House (XXX V.O.).
 Lot dimensions have been omitted on this plan, refer to the
 recorded plot for this information.

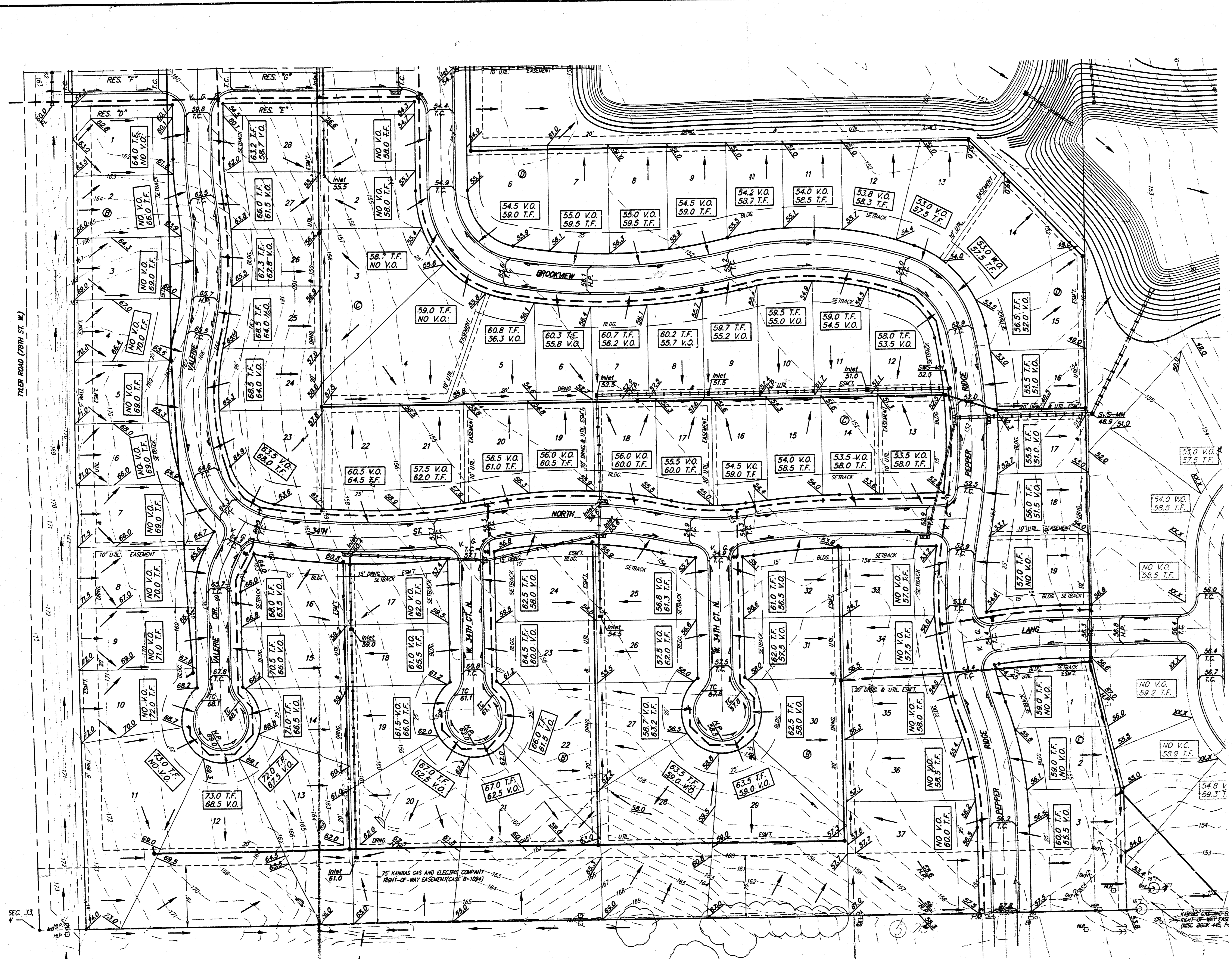
9/23/03 Revised back lot grades AEG
 17 June 03 revised house elev by SMO per ABW
 Blk A: Lots 1-6, 11-16
 Blk B: Lots 1-16, 18-34, 37
 Blk C: Lots 4-21, 23-27
 Blk D: Lots 6-10, 12-15, 18-19
 Blk E: Lots 1-3

TYLER'S LANDING ADDITION
MASTER GRADING PLAN
 CITY OF WICHITA, KANSAS

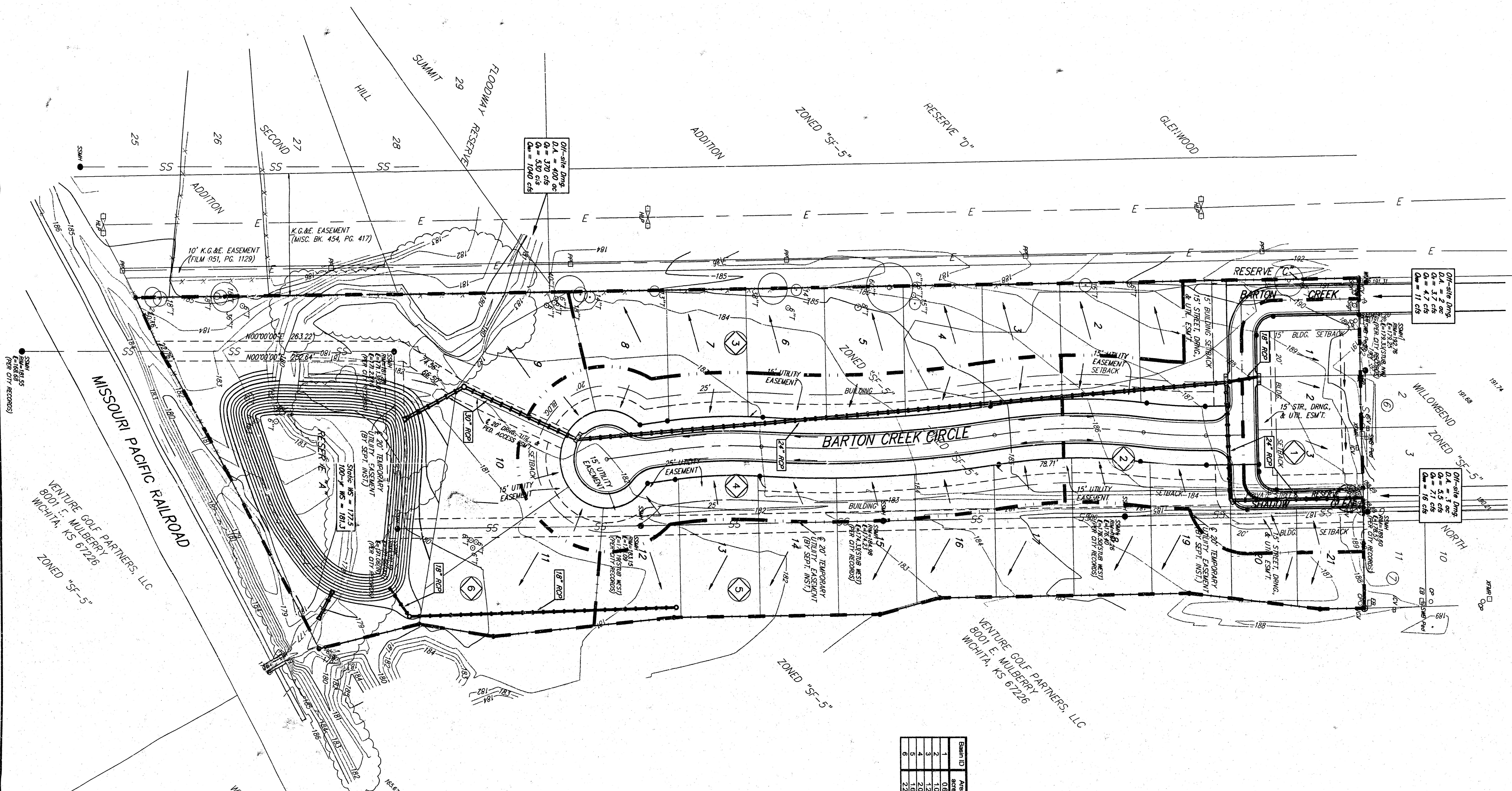
BAUGHMAN COMPANY P.A.
 ENGINEERING, SURVEYING, & PLANNING
 315-262-7271 • 315 ELLIS • WICHITA, KANSAS 67211

PROJECT NUMBER: _____ SHEET: **3**

DESIGN: SQZ DRAWN: SCL APPROVED: NEW DATE: 11/04/02 SCALE: 1"=60'

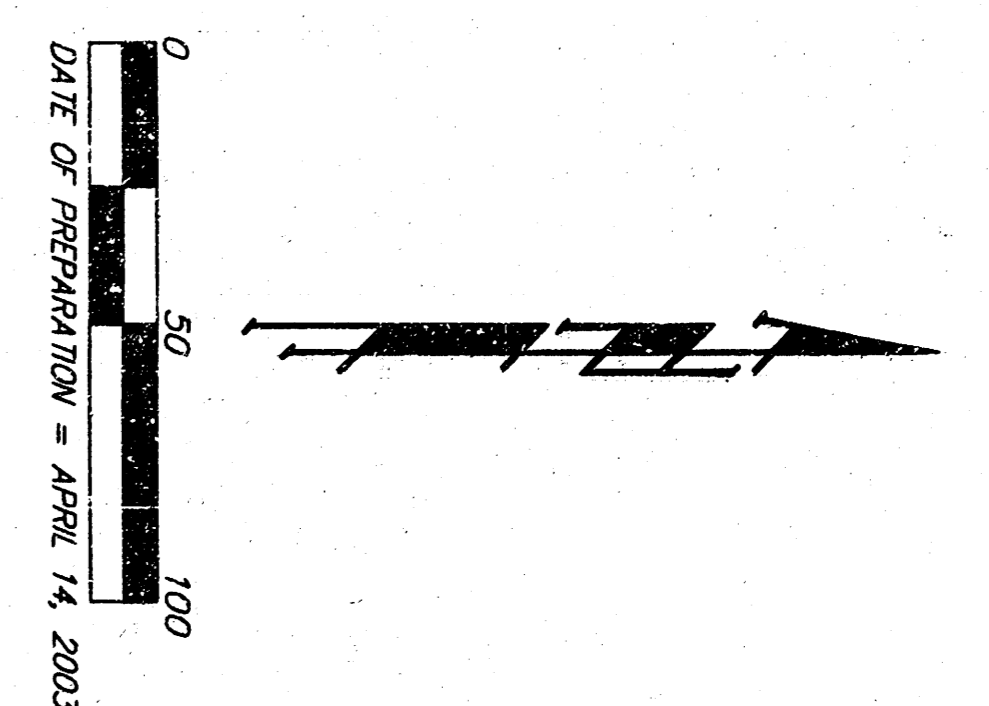


DRAINAGE PLAN WILLOWBEND NORTH ESTATES 2ND ADDITION WICHITA, SEDGWICK COUNTY, KANSAS



Basin ID	Area acres	Runoff Coefficients				Peak Discharges				
		C2	C3	C100	C2	C3	C100	C2	C3	C100
1	0.6	0.48	0.52	0.74	1.1	1.3	2.4	3.4	3.8	5.5
2	0.6	0.48	0.52	0.74	1.1	1.3	2.4	3.4	3.8	5.5
3	1.2	0.48	0.52	0.74	2.2	2.6	4.8	6.8	7.7	11
4	2.0	0.48	0.52	0.74	3.7	4.4	8.1	11	12	17
5	1.6	0.48	0.52	0.74	2.9	3.5	6.5	9	10	14
6	1.6	0.48	0.52	0.74	2.9	3.5	6.5	9	10	14
7	2.2	0.47	0.51	0.73	4.0	4.8	9.1	13	15	21

BENCHMARK
 □ Top of Curve, ENE Curve return,
 Barton Creek & Castle Pines St.,
 Elevation = 550.23 (4/10/2003)
 (584.13 4/10/2003)



VENTURE GOLF PARTNERS, LLC
 800 E. MULBERRY
 WICHITA, KS 67226
 ZONED "SF-5"

VENTURE GOLF PARTNERS, LLC
 800 E. MULBERRY
 WICHITA, KS 67226

BAUGHMAN COMPANY P.A.
 ENGINEERING, SURVEYING & PLANNING
 217 APRIL 2003