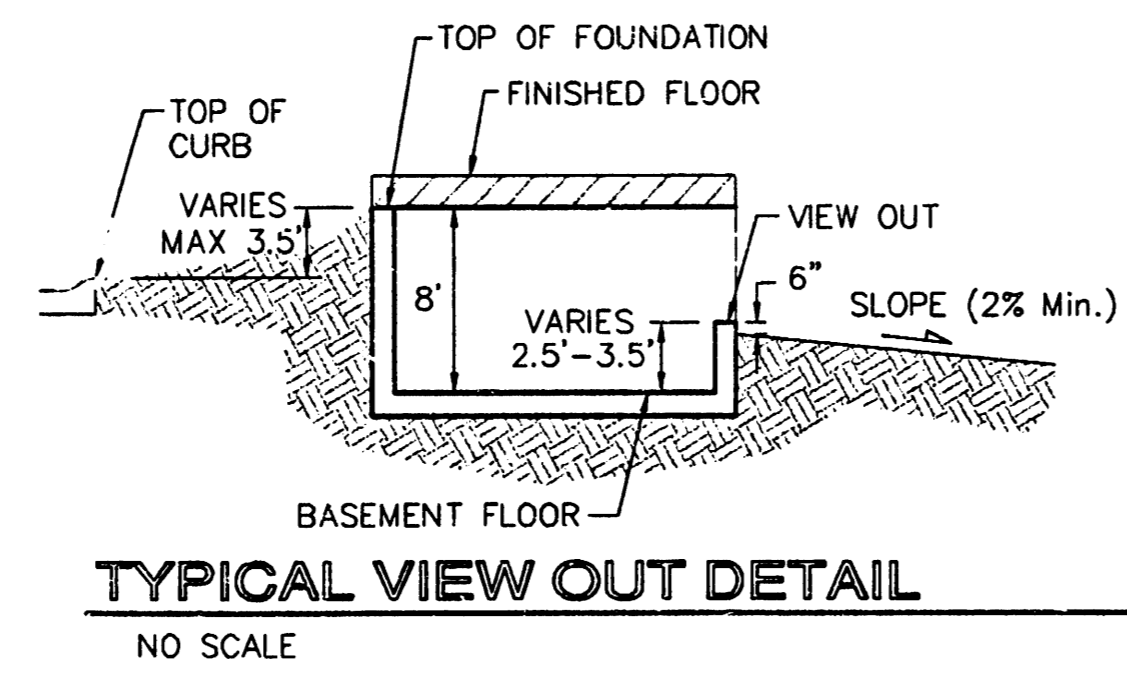
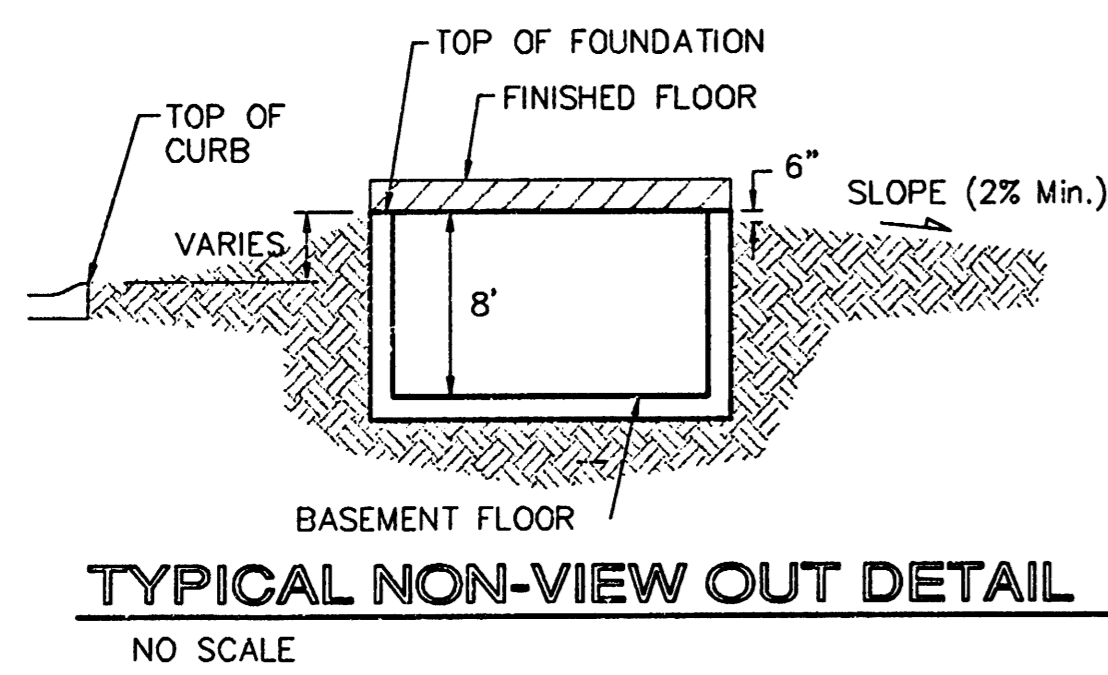
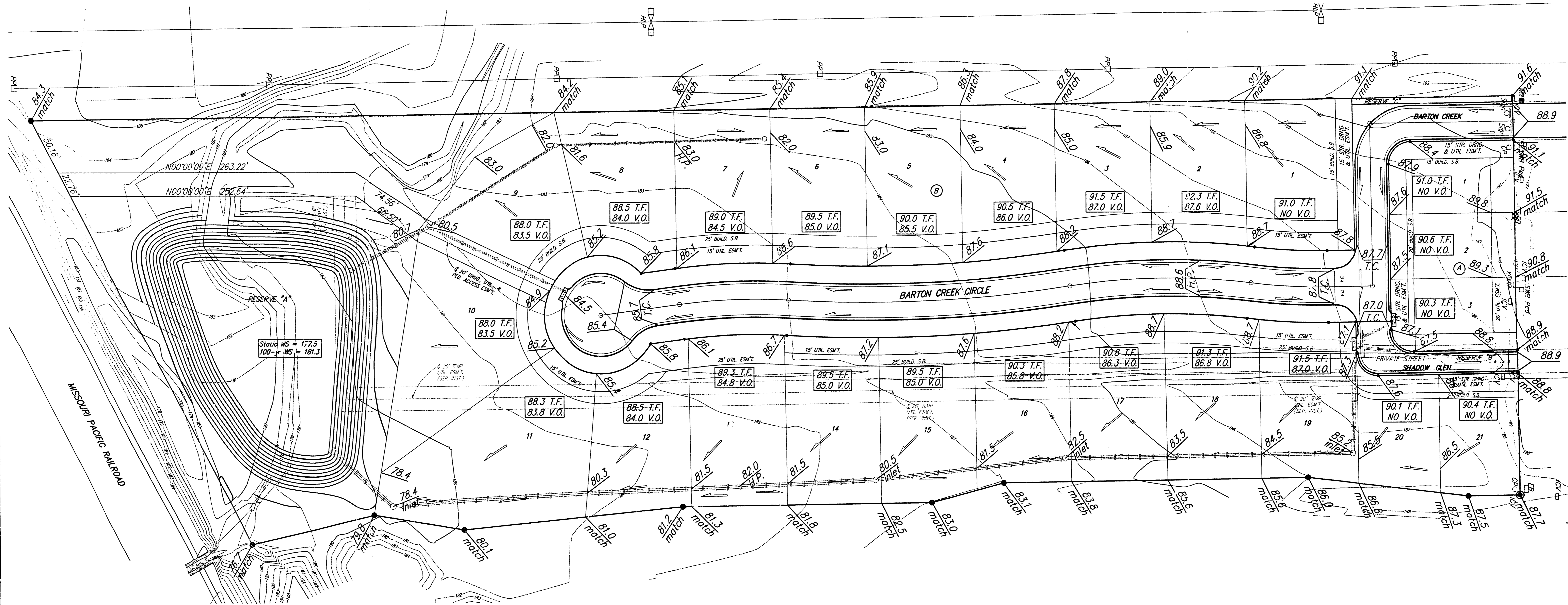
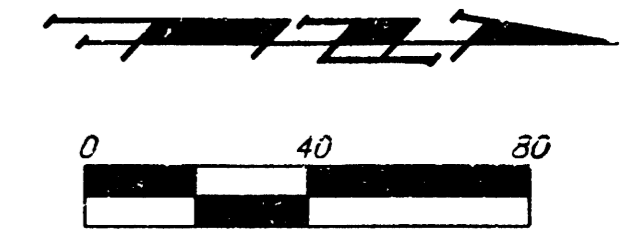


BENCHMARK:
 "□" Top of Curb, ENE Curb return,
 Barton Creek & Castle Pines St.,
 Elev. = 196.79 City Datum
 (1384.19 NGVD29)



NOTES:
 Proposed Top of Foundation Elevations Are Shown On Plans. Contractor to Set Finished Floor Elevations.

All Street Elevations Shown on Plans Are for Top of Curb (Full-Height).

This Grading Plan is Designed with View-Outs. Elevations Shown at Rear of House (XX.X V.O.)

Lot dimensions have been omitted on this plan, refer to the recorded plat for this information.

**APPROVED
DRAINAGE PLAN**

Revised T.F. Lots 2-3, Block A 9/29/03 by AEG

WILLOWBEND NORTH ESTATES 2ND ADD.
GRADING PLAN
 WICHITA, KANSAS
BAUGHMAN COMPANY P.A.
 ENGINEERING, SURVEYING, & PLANNING
 316-262-7271 • 315 ELLIS • WICHITA, KANSAS 67211

DESIGN BLG/NBW	DRAWN BLG/SMD	APPROVED	DATE 04-21-03	SCALE NOTED	SHEET 1 OF 1
-------------------	------------------	----------	------------------	----------------	-----------------------