

BM #1: RR Spike on North Face of Power Pole approx. 1660' West of Ridge Road in South R/W of 37th St. N.  
Elev. = 1331.57

BM #2: "□" Cut Top of Curb Inlet on North Side of Northwind approx. 790' West of Ridge Road  
Elev. = 1331.06

BM #3: "□" Cut Top of Curb Inlet on North Side of Northwind approx. 290' West of Ridge Road  
Elev. = 1329.88

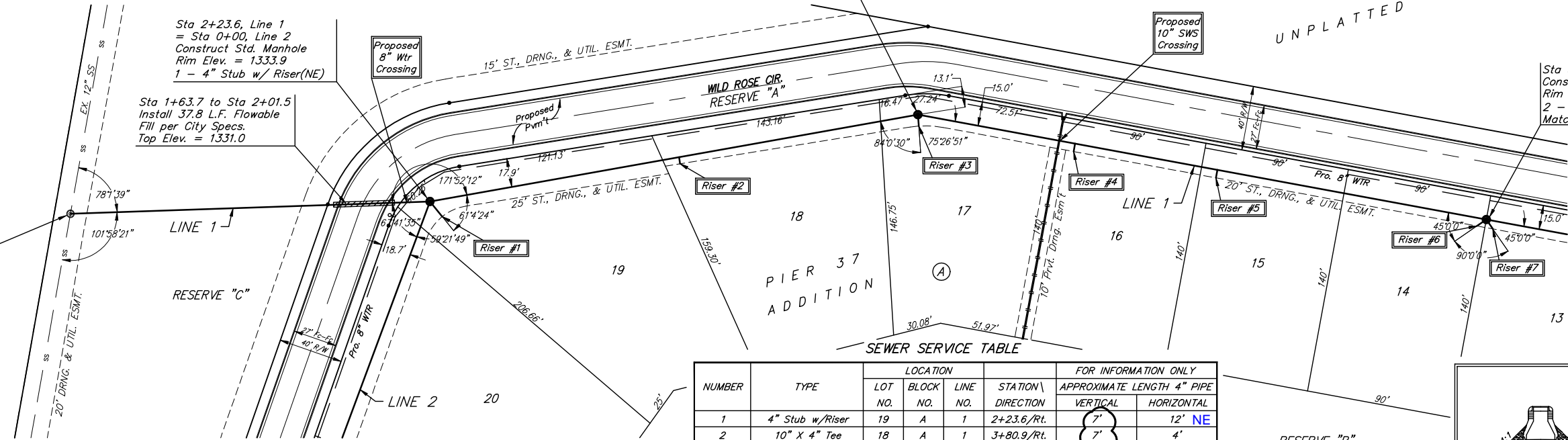
Sta 0+00, Begin Line 1  
Core into existing manhole (2 locations) and construct outside drop. Extend 10" pipe north. Seal & Grout around pipe and reshape invert as necessary. All costs associated with construction of outside drop including dewatering to be included in bid item, "Outside Drop in Ex. Manhole".

Sta 2+23.6, Line 1 = Sta 0+00, Line 2  
Construct Std. Manhole  
Rim Elev. = 1333.9  
1 - 4" Stub w/ Riser(NE)

Sta 5+31.8, Line 1  
Construct Std. Manhole  
Rim Elev. = ~~1333.4~~  
1 - 4" Stub w/ Riser(W)

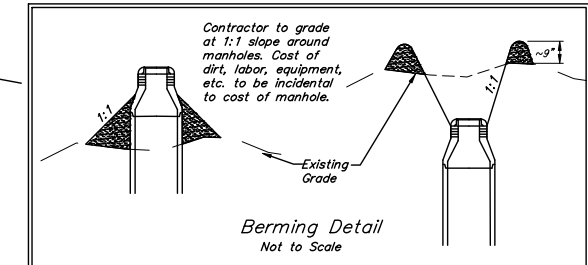
POPP, MICHAEL W. & ASSN L  
7717 W 37TH N  
WICHITA, KS 67205-9300

Sta 8+91.2, Line 1  
Construct Std. Manhole  
Rim Elev. = 1333.4  
2 - 4" Stubs w/ Riser(SE,NE)  
Match Point

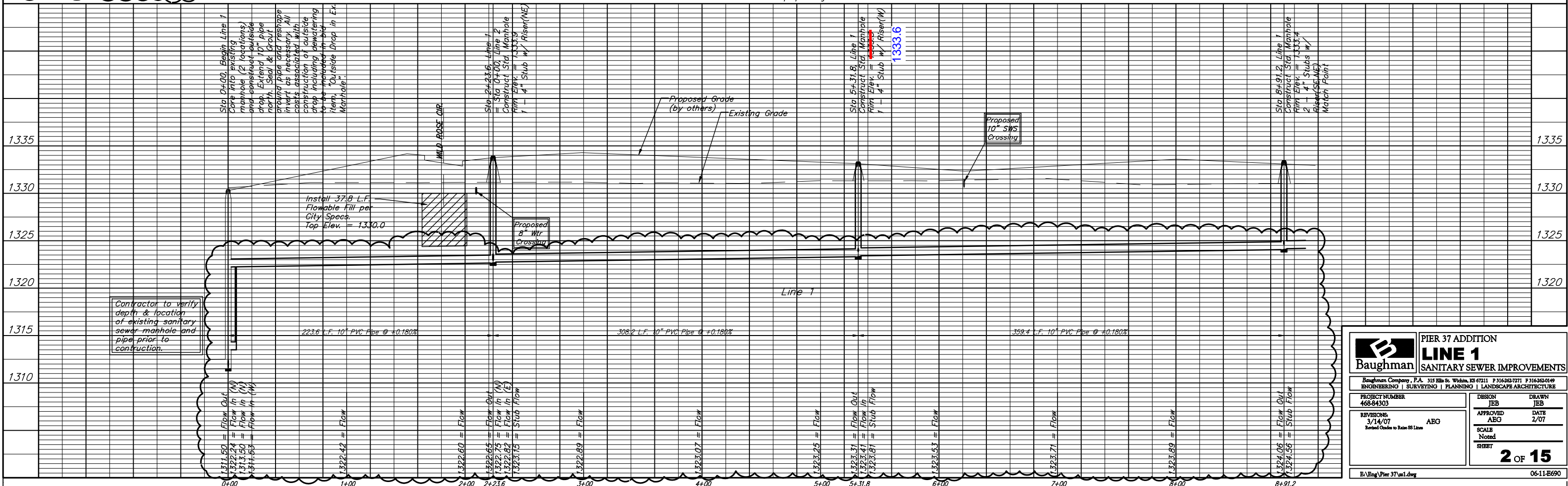


NUMBER	TYPE	LOCATION				FOR INFORMATION ONLY	
		LOT NO.	BLOCK NO.	LINE NO.	STATION \ DIRECTION	APPROXIMATE LENGTH 4" PIPE	
1	4" Stub w/Riser	19	A	1	2+23.6/Rt.	7'	12' NE
2	10" X 4" Tee	18	A	1	3+80.9/Rt.	7'	4' W
3	4" Stub w/Riser	17	A	1	5+34.0/Rt.	6'	7' W
4	10" X 4" Tee	16	A	1	6+31.2/Rt.	5'	5'
5	10" X 4" Tee	15	A	1	7+21.2/Rt.	5'	5'
6	4" Stub w/Riser	14	A	1	8+91.2/Rt.	5'	7' SE
7	4" Stub w/Riser	13	A	1	8+91.2/Rt.	5'	7' NE

NOTE: Vertical Riser Pipe shall be extended to 2' minimum above ground water elevation and 4' maximum below proposed ground elevation.



All trench and manhole excavation areas from Sta. 2+23.6 to Sta. 19+71.2, Line 1 shall be backfilled with sand. The sand backfill shall be within two feet of existing grade and shall be water-jetted and vibrated during backfilling. On-site sand may be used for backfill.



**Baughman** ENGINEERING | SURVEYING | PLANNING | LANDSCAPE ARCHITECTURE

**PIER 37 ADDITION**  
**LINE 1**  
**SANITARY SEWER IMPROVEMENTS**

PROJECT NUMBER: 468-84303  
DESIGN: JEB  
DRAWN: JEB  
APPROVED: AEG  
DATE: 2/07  
SCALE: Noted  
SHEET: 2 OF 15

Revisions: 3/14/07 AEG  
Revised Grades to Rate 55 Lanes

File: Eng\Pier 37\w1.dwg  
06-11-E690